

## Rabbit Anti-Bim antibody

SLM-60641R

<b>Product Name</b>	Bim
<b>Chinese Name</b>	细胞死亡调解子 Recombinant rabbit monoclonal anti
<b>Alias</b>	Bcl-2 interacting mediator of cell death; Bcl-2-like protein 11; Bcl2-L-11; Bcl2-interacting mediator of cell death; BCL2L11; BAM; BIM-alpha6; BIM-beta6; BIM-beta7; BimEL; BimL; BOD; B2L11_HUMAN.
<b>Research Area</b>	Cell biology Neurobiology Apoptosis Kinases and Phosphatases Mitochondrion
<b>Immunogen Species</b>	Rabbit
<b>Clonality</b>	Monoclonal
<b>React Species</b>	Human, Mouse, (predicted: Rat, ) WB=1:500-1000
<b>Applications</b>	not yet tested in other applications. optimal dilutions/concentrations should be determined by the end user.
<b>Theoretical molecular weight</b>	22kDa
<b>Cellular localization</b>	cytoplasmic The cell membrane Mitochondrion
<b>Form</b>	Liquid
<b>Concentration</b>	1mg/ml
<b>immunogen</b>	KLH conjugated synthetic peptide derived from human Bim
<b>Lsotype</b>	IgG
<b>Purification</b>	affinity purified by Protein A
<b>Buffer Solution</b>	1M TBS(pH7.4) with 1% BSA, 3% Proclin300 and 50% Glycerol.
<b>Storage</b>	Shipped at 4°C. Store at -20 °C for one year. Avoid repeated freeze/thaw cycles.
<b>Attention</b>	This product as supplied is intended for research use only, not for use in human, therapeutic or diagnostic applications.
<b>PubMed</b>	<a href="#">PubMed</a>
<b>Product Detail</b>	The protein encoded by this gene belongs to the BCL-2 protein family. BCL-2 family members form hetero- or homodimers and act as anti- or pro-apoptotic

regulators that are involved in a wide variety of cellular activities. The protein encoded by this gene contains a Bcl-2 homology domain 3 (BH3). It has been shown to interact with other members of the BCL-2 protein family, including BCL2, BCL2L1/BCL-X(L), and MCL1, and to act as an apoptotic activator. The expression of this gene can be induced by nerve growth factor (NGF), as well as by the forkhead transcription factor FKHR-L1, which suggests a role of this gene in neuronal and lymphocyte apoptosis. Transgenic studies of the mouse counterpart suggested that this gene functions as an essential initiator of apoptosis in thymocyte-negative selection. Several alternatively spliced transcript variants of this gene have been identified. [provided by RefSeq].  
Function : Induces apoptosis. Isoform BimL is more potent than isoform BimEL. Isoform Bim-alpha1, isoform Bim-alpha2 and isoform Bim-alpha3 induce apoptosis, although less potent than the isoforms BimEL, BimL and BimS. Isoform Bim-gamma induces apoptosis.

**SWISS:**

O43521

**Gene ID:**

10018

**Database links:**

[Entrez Gene: 10018](#) Human

[Entrez Gene: 12125](#) Mouse

[Entrez Gene: 64547](#) Rat

[Omim: 603827](#) Human

[SwissProt: O43521](#) Human

[SwissProt: O54918](#) Mouse

[SwissProt: O88498](#) Rat

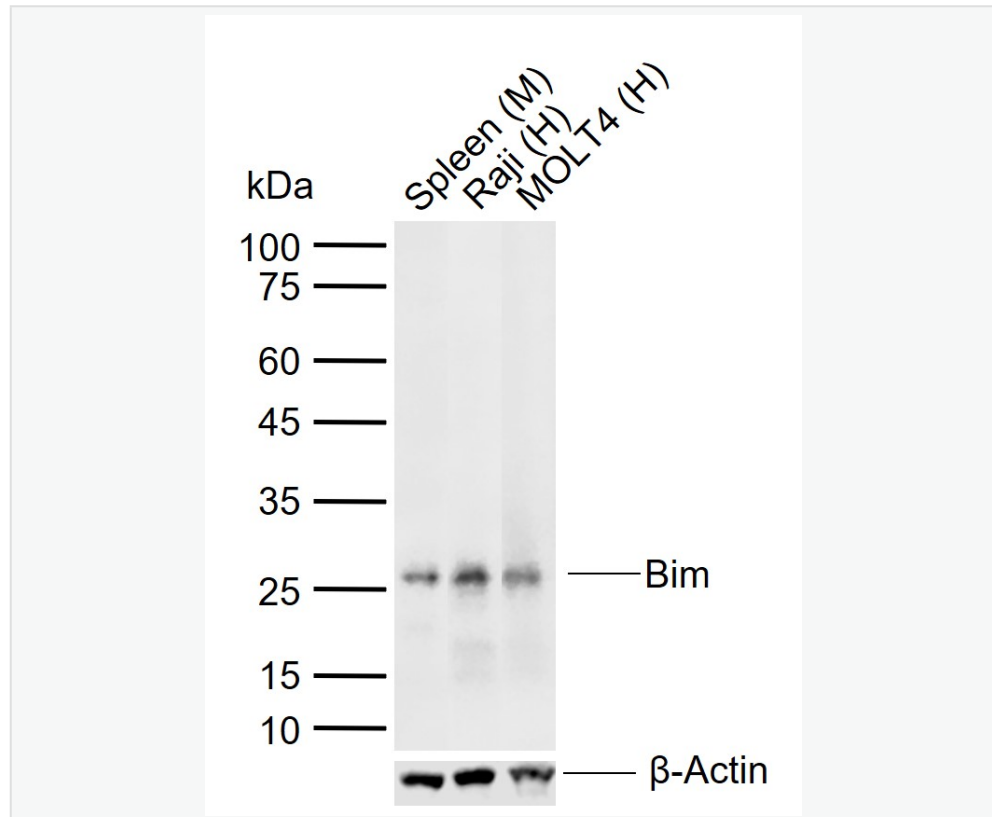
[Unigene: 469658](#) Human

[Unigene: 141083](#) Mouse

[Unigene: 453214](#) Mouse

[Unigene: 82709](#) Rat

**Product Picture**



Sample:

Lane 1: Mouse Spleen tissue lysates

Lane 2: Human Raji cell lysates

Lane 3: Human MOLT4 cell lysates

Primary: Anti-Bim (SLM-60641R) at 1/1000 dilution

Secondary: IRDye800CW Goat Anti-Rabbit IgG at 1/20000 dilution

Predicted band size: 22 kDa

Observed band size: 26 kDa