



Rabbit Anti-WWOX antibody

SLM-60630R

Product Name WWOX

Chinese Name

Immunogen Species Rabbit

Clonality Monoclonal

Clone NO. F11B6

React Species Human,Rat(predicted:Mouse)

WB=1:500-2000,IHC-P=1:100-500,IHC-F=1:100-500,ICC/IF=1:100-500,IF=1:100-500,Flow-C
(Paraffin sections need antigen repair)

Applications

not yet tested in other applications.

optimal dilutions/concentrations should be determined by the end user.

Cellular localization The nucleus The cell membrane

Form Liquid

Concentration 1mg/ml

Lsotype IgG

Purification Affinity purified by Protein A

Buffer Solution 1M TBS(pH7.4) with 1% BSA, 3% Proclin300 and 50% Glycerol.

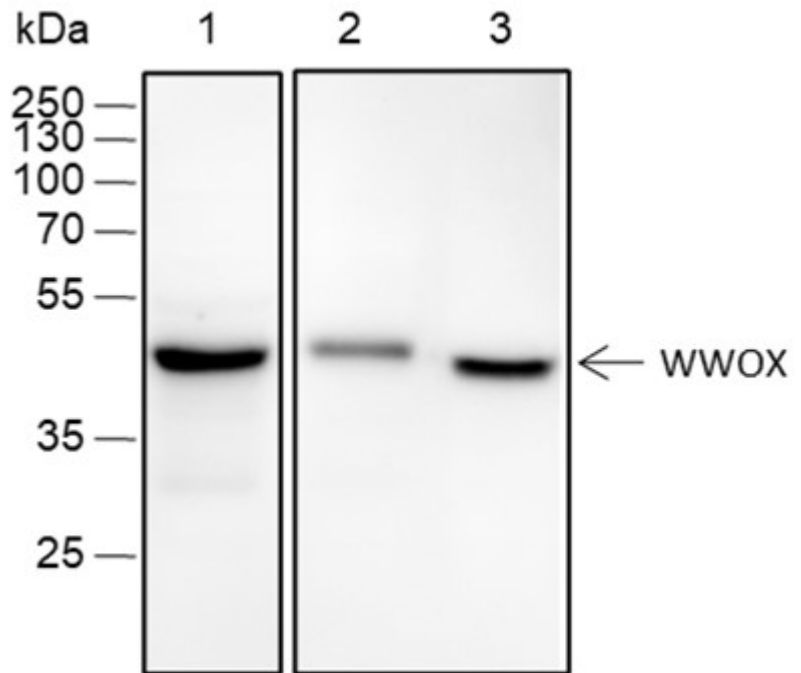
Storage Shipped at 4°C. Store at -20 °C for one year. Avoid repeated freeze/thaw cycles.

Attention This product as supplied is intended for research use only, not for use in human, therapeutic or diagnostic applications.

PubMed [PubMed](#)

Product Detail

作为 Tumour 抑制因子，在 Apoptosis 中发挥作用。可能与 p53/TP53 协同作用以控制基因诱导的细胞死亡。在 TGFB1 信号传导和 TGFB1 介导的细胞死亡中发挥作用。也可能在 TNF 子 (TNF) 介导的细胞死亡中发挥作用。抑制 Wnt 信号，可能是通过在细胞质中隔离 DV



**Product
Picture**

Blocking buffer: 5% NFDM/TBST

Primary ab dilution: 1:2000

Primary ab incubation condition: 2 hours at room temperature

Secondary ab: Goat Anti-Rabbit IgG H&L (HRP)

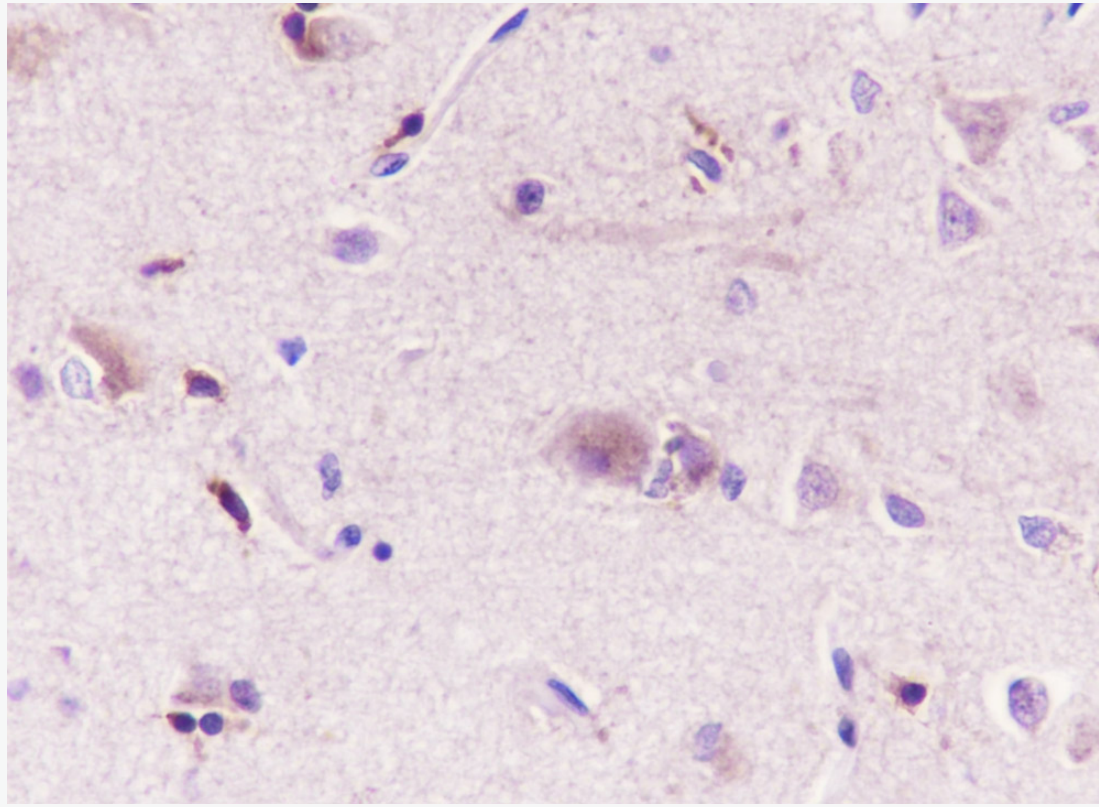
Lysate: 1: MCF-7, 2: Mouse ovary, 3: Rat brain

Protein loading quantity: 20 μ g

Exposure time: 60 s

Predicted MW: 47 kDa

Observed MW: 47 kDa



Tissue: Human cerebrum

Section type: Formalin fixed & Paraffin -embedded section

Retrieval method: High temperature and high pressure

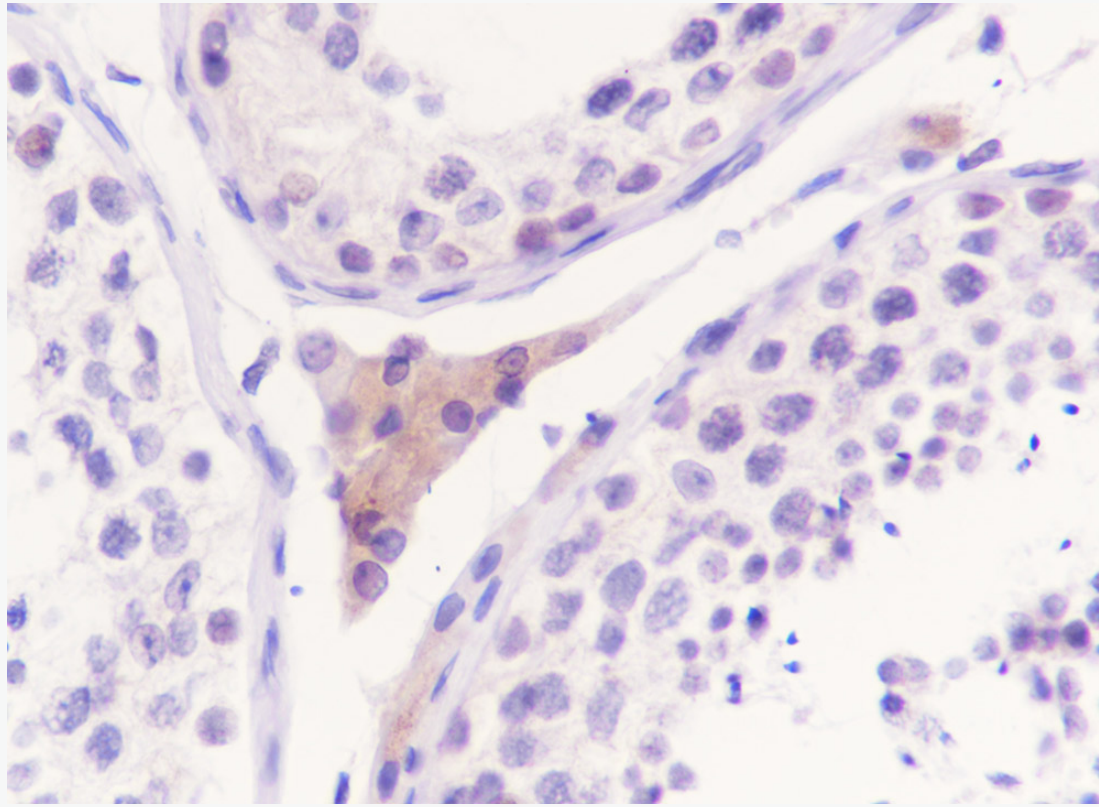
Retrieval buffer: Tris/EDTA buffer, pH 9.0 Primary ab dilution: 1:100

Primary ab incubation condition: 4°C overnight

Secondary ab: SP Kit(Rabbit) (sp-0023)

Counter stain: Hematoxylin (Blue)

Comment: Color brown is the positive signal for SLM-60630R



Tissue: Human testis

Section type: Formalin fixed & Paraffin -embedded section

Retrieval method: High temperature and high pressure

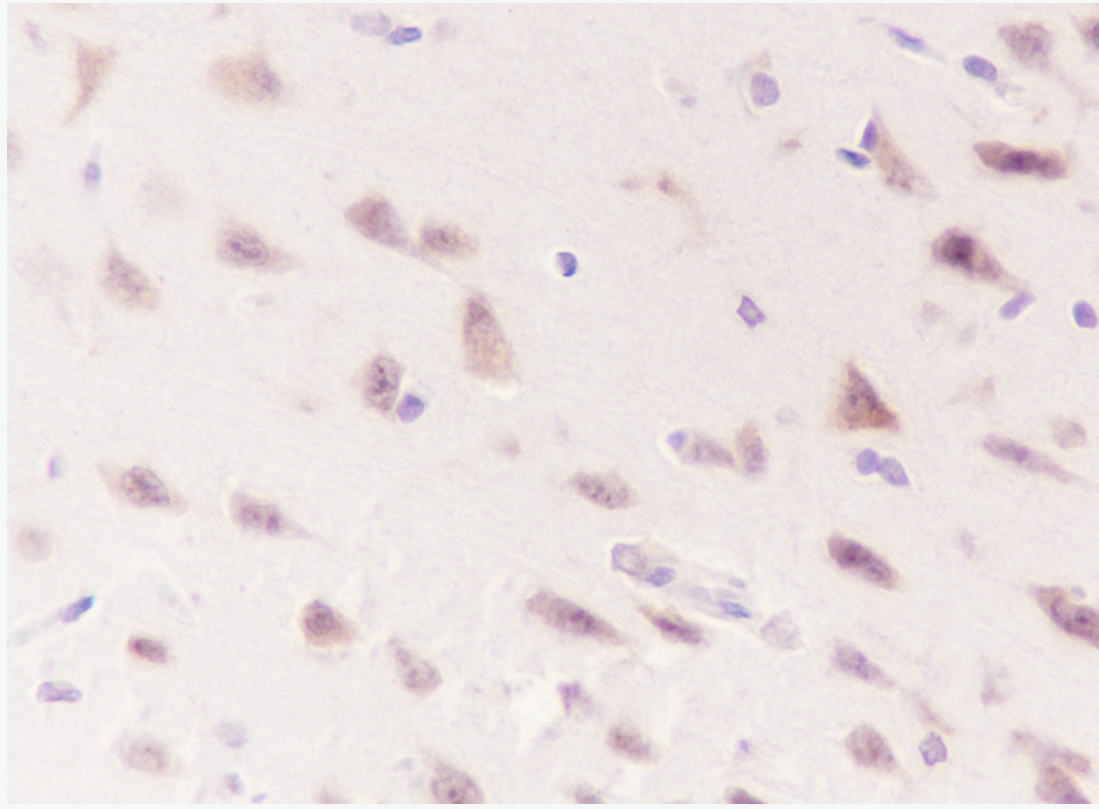
Retrieval buffer: Tris/EDTA buffer, pH 9.0 Primary ab dilution: 1:100

Primary ab incubation condition: 1 hour at room temperature

Secondary ab: SP Kit(Rabbit) (sp-0023)

Counter stain: Hematoxylin (Blue)

Comment: Color brown is the positive signal for SLM-60630R



Tissue: Rat cerebrum

Section type: Formalin fixed & Paraffin -embedded section

Retrieval method: High temperature and high pressure

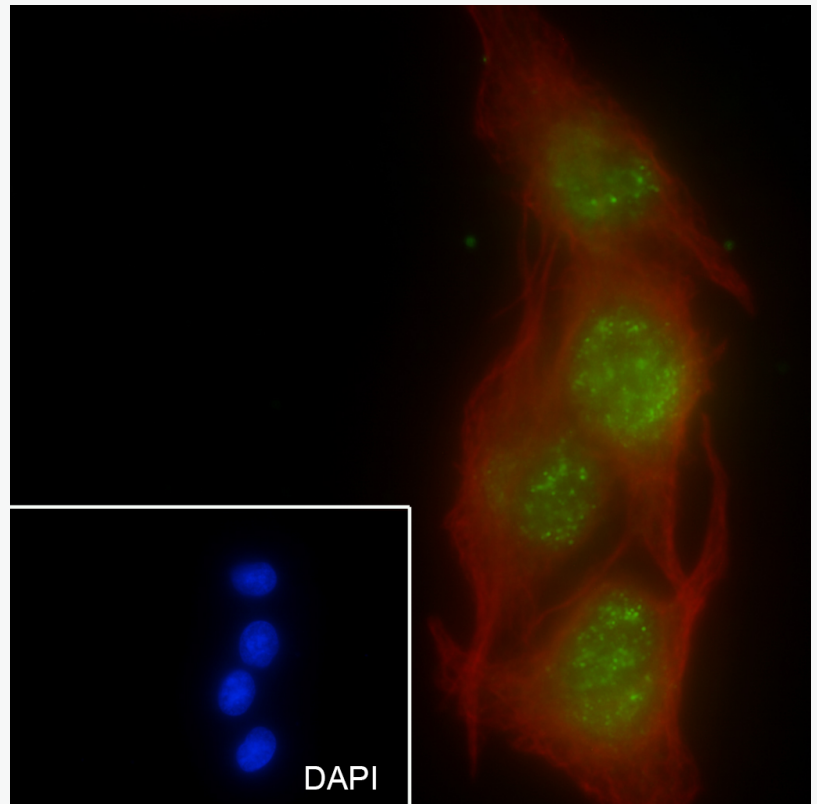
Retrieval buffer: Tris/EDTA buffer, pH 9.0 Primary ab dilution: 1:100

Primary ab incubation condition: 1 hour at room temperature

Secondary ab: SP Kit(Rabbit) (sp-0023)

Counter stain: Hematoxylin (Blue)

Comment: Color brown is the positive signal for SLM-60630R



Cell line: A549

Fixative: 100% Ice-cold methanol

Permeabilization: 0.1% TritonX-100

Primary ab dilution: 1:50

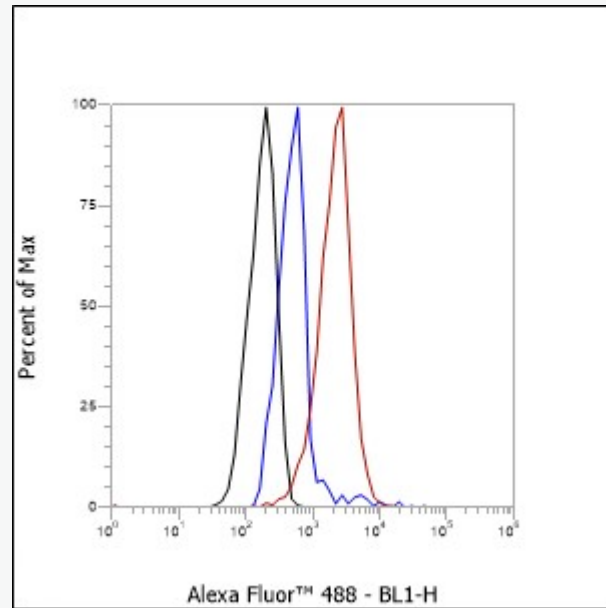
Primary incubation condition: 4°C overnight

Secondary ab: Goat Anti-Rabbit IgG

Nuclear counter stain: DAPI (Blue)

Counter stain: Tubulin (Red)

Comment: Color green is the positive signal for SLM-60630R



Cell line: MCF-7

Fixation: 4% Paraformaldehyde

Permeabilization: 90% Methanol

Primary Ab dilution: 1:50

Secondary Ab: Goat Anti-Rabbit IgG

Unlabelled control: The cell without incubation with primary antibody and secondary antibody (black line).

Isotype control: Rabbit monoclonal IgG (Blue line).

Comment: Line red is the positive signal for SLM-60630R