



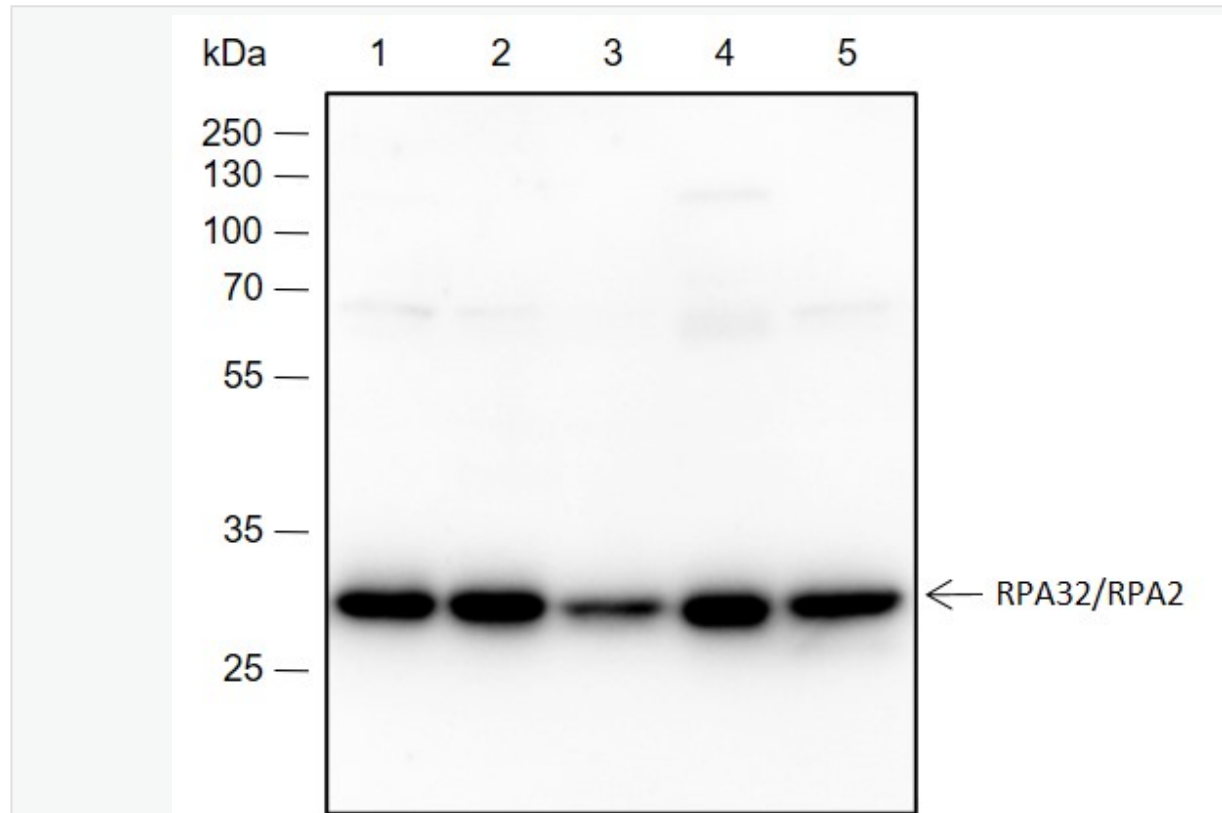
## Rabbit Anti-RPA2 antibody

SLM-60629R

**Product Name** RPA2**Alias** RFA2\_HUMAN; Replication protein A 32 kDa subunit; RP-A p32; Replication factor A protein 2); Replication protein A 34 kDa subunit (RP-A p34); REPA2; RPA32; RPA34; replication factor A 32 kDa subunit; RP-A p32; RPA32; RPA34; RP-A p34;**Immunogen Species** Rabbit**Clonality** Monoclonal**Clone NO.** B10A1**React Species** Human,Mouse,Rat**Applications** WB=1:500-2000,IHC-P=1:100-500,IHC-F=1:100-500,ICC/IF=1:50-200,IF=1:100-500,Flow-Cytometry (Paraffin sections need antigen repair)  
not yet tested in other applications.  
optimal dilutions/concentrations should be determined by the end user.**Cellular localization** The nucleus**Form** Liquid**Concentration** 1mg/ml**Lsotype** IgG**Purification** Affinity purified by Protein A**Buffer Solution** 1M TBS(pH7.4) with 1% BSA, 3% Proclin300 and 50% Glycerol.**Storage** Shipped at 4°C. Store at -20 °C for one year. Avoid repeated freeze/thaw cycles.**Attention** This product as supplied is intended for research use only, not for use in human, therapeutic or diagnostic applications.**PubMed** [PubMed](#)**Product Detail**

复制蛋白 A(RPA)是一种保守的核单链 DNA (ssDNA)Binding protein。人类 RPA(hRPA)包含 32 和 14 kDa 的三个亚基 (hRPA70、hRPA32 和 hRPA14)。RPA32 作为异源三聚体复制叉结合蛋白(RPA/RP-A)的一部分, 结合并稳定单链 DNA 中间体, 这些中间体在 DNA 复制过程中可以防止它们重新退火, 并同时招募和激活参与 DNA 代谢的不同蛋白质和复合物。因此, 复制和细胞对 DNA 损伤的反应中都起着至关重要的作用。

**Product  
Picture**



Blocking buffer: 5% NFDm/TBST

Primary ab dilution: 1:2000

Primary ab incubation condition: 2 hours at room temperature

Secondary ab: Goat Anti-Rabbit IgG H&L (HRP)

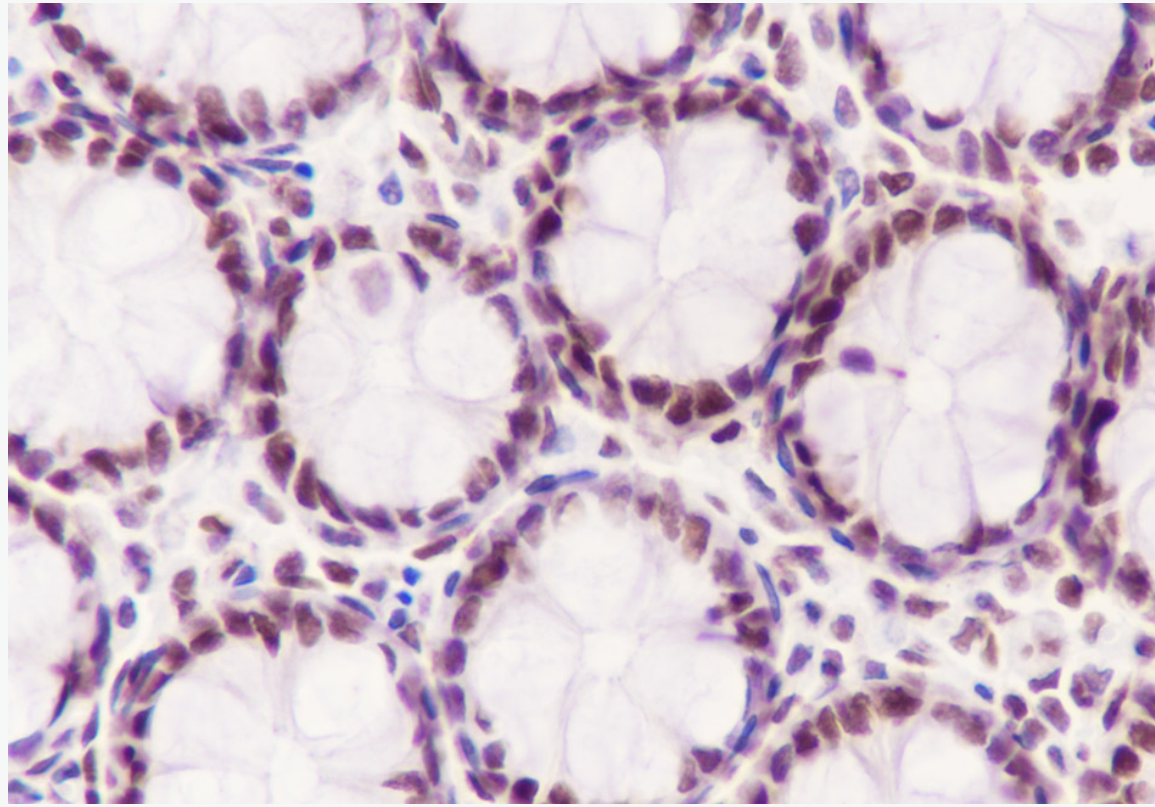
Lysate: 1: HeLa, 2: MCF-7, 3: HepG2, 4: C6, 5: NIH-3T3

Protein loading quantity: 20  $\mu$ g

Exposure time: 30 s

Predicted MW: 29 kDa

Observed MW: 29 kDa



Tissue: Human colon

Section type: Formalin fixed & Paraffin -embedded section

Retrieval method: High temperature and high pressure

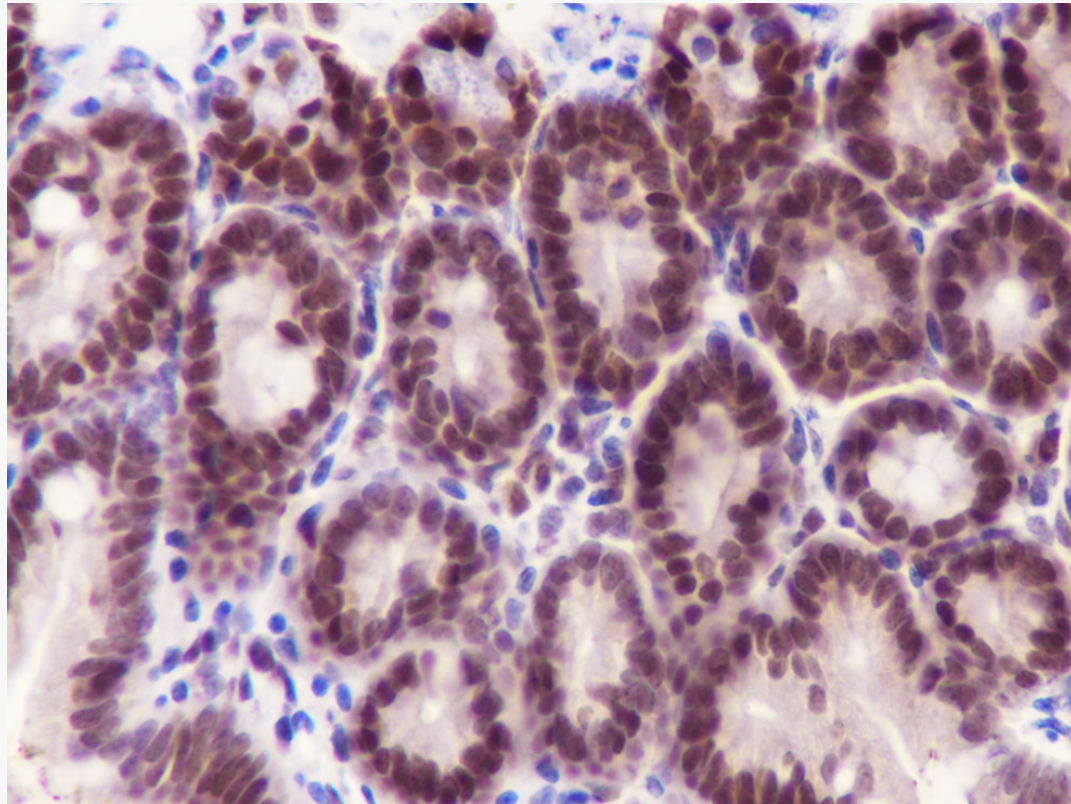
Retrieval buffer: Tris/EDTA buffer, pH 9.0 Primary ab dilution: 1:1000

Primary ab incubation condition: 1 hour at room temperature

Secondary ab: SP Kit(Rabbit) (sp-0023)

Counter stain: Hematoxylin (Blue)

Comment: Color brown is the positive signal for SLM-60629R



Tissue: Mouse small intestine

Section type: Formalin fixed & Paraffin -embedded section

Retrieval method: High temperature and high pressure

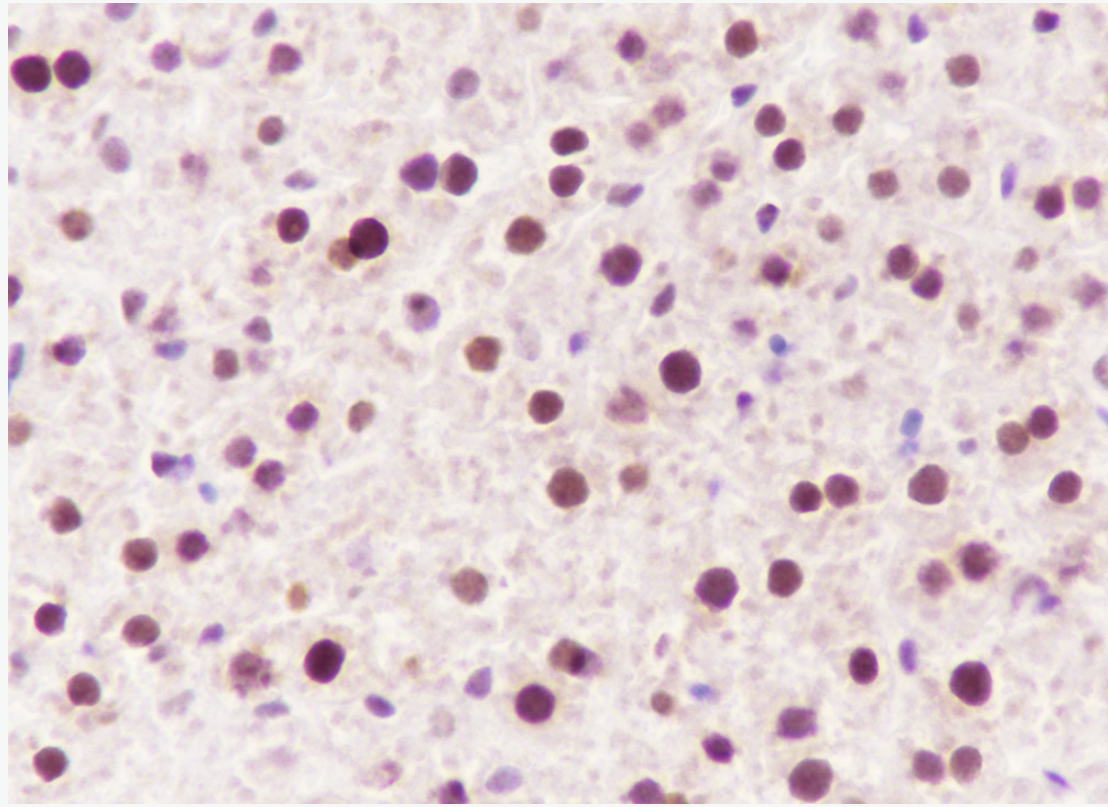
Retrieval buffer: Tris/EDTA buffer, pH 9.0 Primary ab dilution: 1:1000

Primary ab incubation condition: 1 hour at room temperature

Secondary ab: SP Kit(Rabbit) (sp-0023)

Counter stain: Hematoxylin (Blue)

Comment: Color brown is the positive signal for SLM-60629R



Tissue: Rat liver

Section type: Formalin fixed & Paraffin -embedded section

Retrieval method: High temperature and high pressure

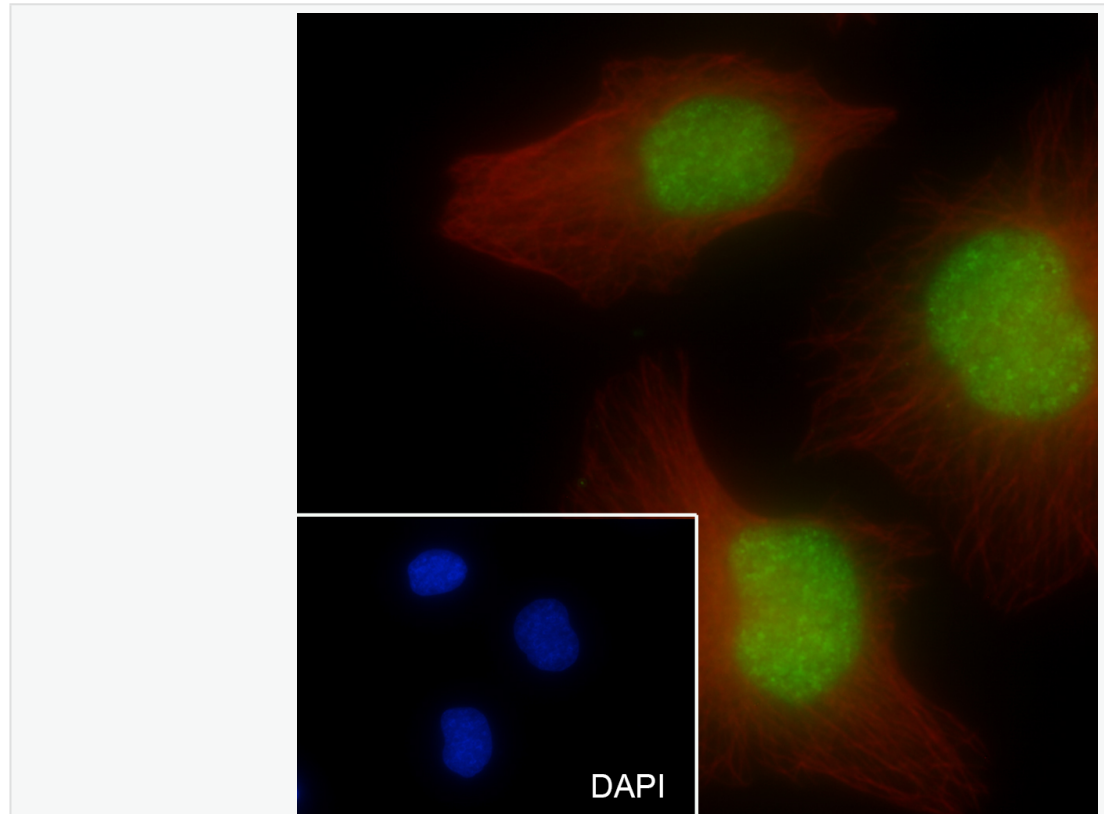
Retrieval buffer: Tris/EDTA buffer, pH 9.0 Primary ab dilution: 1:1000

Primary ab incubation condition: 1 hour at room temperature

Secondary ab: SP Kit(Rabbit) (sp-0023)

Counter stain: Hematoxylin (Blue)

Comment: Color brown is the positive signal for SLM-60629R



Cell line: HeLa

Fixative: 100% Ice-cold methanol

Permeabilization: 0.1% TritonX-100

Primary ab dilution: 1:50

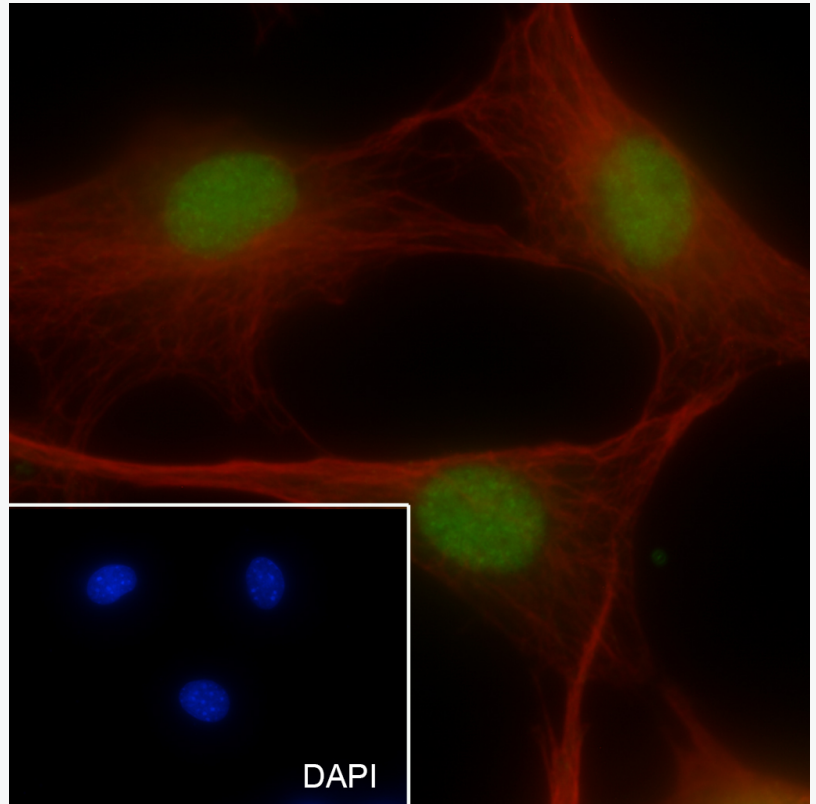
Primary incubation condition: 4°C overnight

Secondary ab: Goat Anti-Rabbit IgG

Nuclear counter stain: DAPI (Blue)

Counter stain: Tubulin (Red)

Comment: Color green is the positive signal for SLM-60629R



Cell line: NIH/3T3

Fixative: 100% Ice-cold methanol

Permeabilization: 0.1% TritonX-100

Primary ab dilution: 1:50

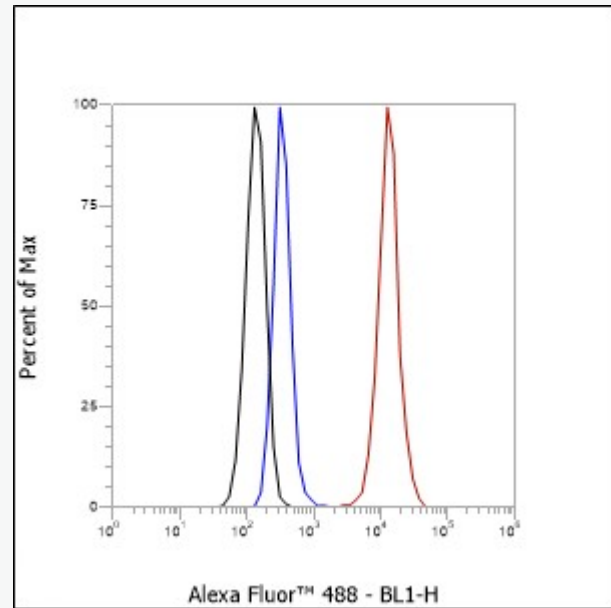
Primary incubation condition: 4°C overnight

Secondary ab: Goat Anti-Rabbit IgG

Nuclear counter stain: DAPI (Blue)

Counter stain: Tubulin (Red)

Comment: Color green is the positive signal for SLM-60629R



Cell line: NIH/3T3

Fixative: 4% Paraformaldehyde

Permeabilization: 90% Methanol

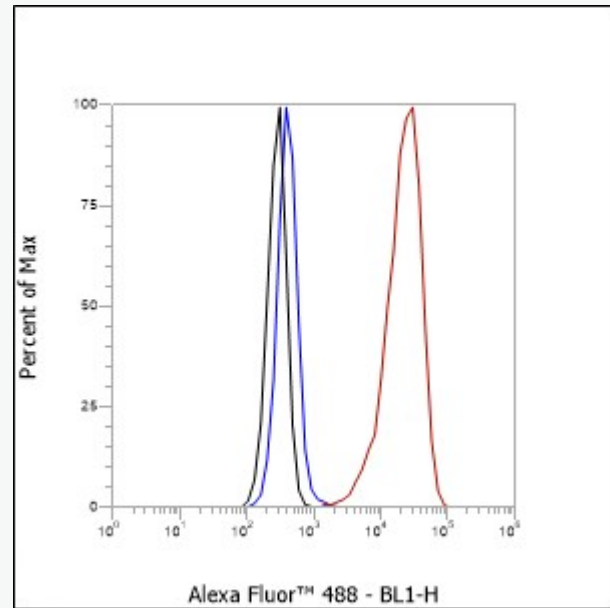
Primary ab dilution: 1:100

Secondary ab: Goat anti Rabbit IgG

Unlabelled control: The cell without incubation with primary antibody and secondary antibody (black line).

Isotype control: Rabbit monoclonal IgG (Blue line).

Comment: Line red is the positive signal for SLM-60629R



Cell line: HeLa

Fixative: 4% Paraformaldehyde

Permeabilization: 90% Methanol

Primary ab dilution: 1:100

Secondary ab: Goat anti Rabbit IgG

Unlabelled control: The cell without incubation with primary antibody and secondary antibody (Blue line).

Isotype control: Rabbit monoclonal IgG (Blue line).

Comment: Line red is the positive signal for SLM-60629R