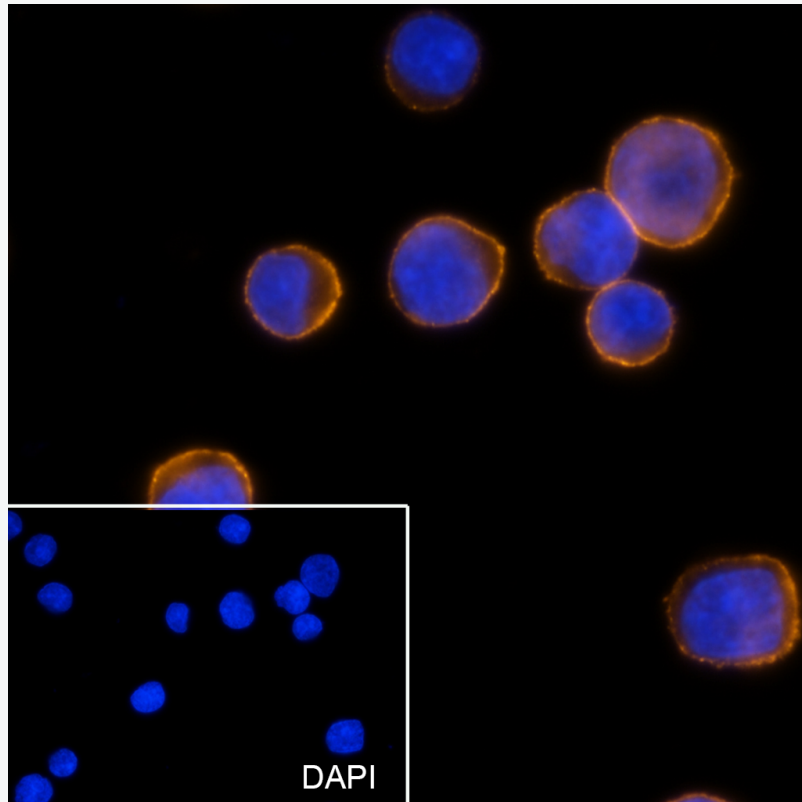


## Mouse Anti-CD38 (PE)antibody

SLM-60627M

<b>Product Name</b>	CD38 (PE)
<b>Chinese Name</b>	
<b>Immunogen Species</b>	Mouse
<b>Clonality</b>	Monoclonal
<b>Clone NO.</b>	H5D10
<b>React Species</b>	Human
<b>Applications</b>	ICC/IF=1:100-500,Flow-Cyt=1:50-100 not yet tested in other applications. optimal dilutions/concentrations should be determined by the end user.
<b>Cellular localization</b>	cytoplasmic
<b>Form</b>	Liquid
<b>Concentration</b>	1mg/ml
<b>Lsotype</b>	IgG2a/Kappa
<b>Purification</b>	Affinity purified by Protein G
<b>Buffer Solution</b>	1M TBS(pH7.4) with 1% BSA, 3% Proclin300 and 50% Glycerol.
<b>Storage</b>	Shipped at 4°C. Store at -20 °C for one year. Avoid repeated freeze/thaw cycles.
<b>Attention</b>	This product as supplied is intended for research use only, not for use in human, therapeutic or diagnostic applications.
<b>PubMed</b>	<a href="#">PubMed</a>
<b>Product Detail</b>	合成第二信使环 ADP 核糖和烟酸腺嘌呤二核苷酸磷酸,前者是葡萄糖诱导胰岛素分泌的第二信使。还具有 cADPr 水解酶活性。也是免疫系统细胞中的一种受体。

**Product Picture**



Cell line: Ramos

Fixative: 4% Paraformaldehyde

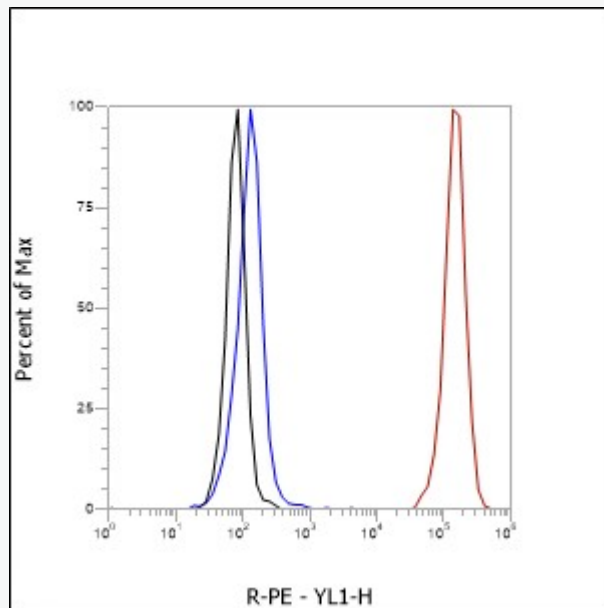
Permeabilization: 0.1% TritonX-100

Primary ab dilution: 1:50

Primary incubation condition: 45 mins at room temperature

Nuclear counter stain: DAPI (Blue)

Comment: Color orange is the positive signal for SLM-60627M



Cell line: Raji

Fixative: Unfixed

Permeabilization: None

Primary ab dilution: 1:100

Primary incubation condition: 30 min at room temperature

Unlabelled control: The cell without incubation with primary antibody (Black line).

Isotype control: Mouse monoclonal IgG (Blue line).

Comment: Line red is the positive signal for SLM-60627M