

Rabbit Anti-CGA antibody

SLM-60623R

Product Name CGA

Chinese Name 促甲状腺激素 α Recombinant rabbit monoclonal anti

Alias GLHA_HUMAN; Glycoprotein hormones alpha chain; Anterior pituitary glycoprotein hormones common subunit alpha; HCG; LHA; FSHA; GPA1; GPHa; TSHA; GPHA1; Choriogonadotropin alpha chain; Chorionic gonadotrophin subunit alpha (CG-alpha); Follicle-stimulating hormone alpha chain (FSH-alpha); Follitropin alpha chain; Luteinizing hormone alpha chain (LSH-alpha); Lutropin alpha chain; Thyroid-stimulating hormone alpha chain (TSH-alpha); Thyrotropin alpha chain; glycoprotein hormones, alpha polypeptide; HCG alpha;

Immunogen Species Rabbit

Clonality Monoclonal

Clone NO. D4A7

React Species Human

Applications WB=1:500-2000,IHC-P=1:100-500,IHC-F=1:100-500,IF=1:100-500 (Paraffin sections need antigen repair)
not yet tested in other applications.
optimal dilutions/concentrations should be determined by the end user.

Theoretical molecular weight 13kDa

Cellular localization Extracellular matrix Secretory protein

Form Liquid

Concentration 1mg/ml

Lsotype IgG

Purification Affinity purified by Protein A

Buffer Solution 1M TBS(pH7.4) with 1% BSA, 3% Proclin300 and 50% Glycerol.

Storage Shipped at 4°C. Store at -20 °C for one year. Avoid repeated freeze/thaw cycles.

Attention This product as supplied is intended for research use only, not for use in human, therapeutic or diagnostic applications.

PubMed

[PubMed](#)

The four human glycoprotein hormones chorionic gonadotropin (CG), luteinizing hormone (LH), follicle stimulating hormone (FSH), and thyroid stimulating hormone (TSH) are dimers consisting of alpha and beta subunits that are associated noncovalently. The alpha subunits of these hormones are identical, however, their beta chains are unique and confer biological specificity. The protein encoded by this gene is the alpha subunit and belongs to the glycoprotein hormones alpha chain family. Two transcript variants encoding different isoforms have been found for this gene. [provided by RefSeq, Nov 2011]

Subunit:

Heterodimer of a common alpha chain and a unique beta chain which confers biological specificity to thyrotropin, lutropin, follitropin and gonadotropin.

Subcellular Location:

Secreted.

Product Detail

SWISS:
P01215

Gene ID:
1081

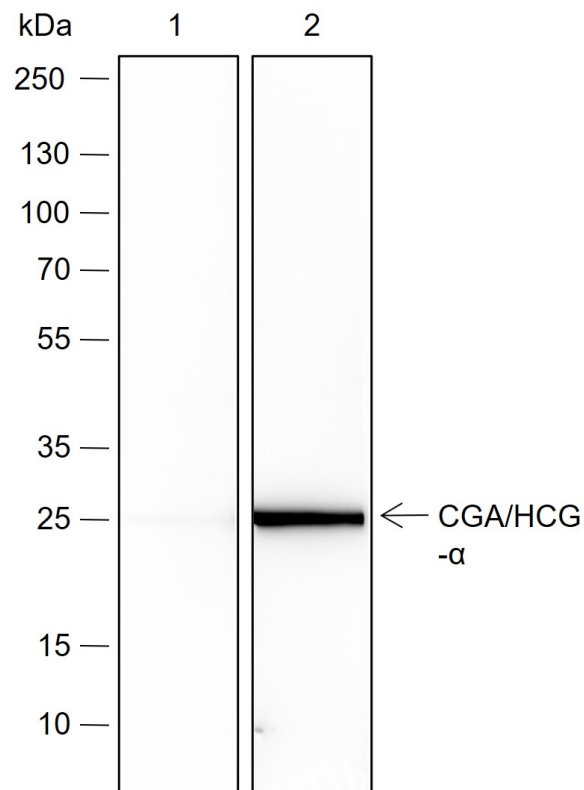
Database links:

[Entrez Gene: 1081](#) Human

[SwissProt: P01215](#) Human

活性异二聚体 glycoprotein 激素促甲状腺素/促甲状腺激素/TSH、促黄体激素/促黄体生成素/LH、促卵泡素/促卵泡激素/FSH 和绒毛膜促性腺激素/CG 的共享 α 链。这些激素结合靶细胞上的特定受体，进而激活下游信号通路。

**Product
Picture**



Blocking buffer: 5% NFDN/TBST

Primary ab dilution: lane 1: SLM-60623R+ competitive peptide, lane 2: SLM-60623R,
1:2000

Primary ab incubation condition: 2 hours at room temperature

Secondary ab: Goat Anti-Rabbit IgG H&L (HRP)

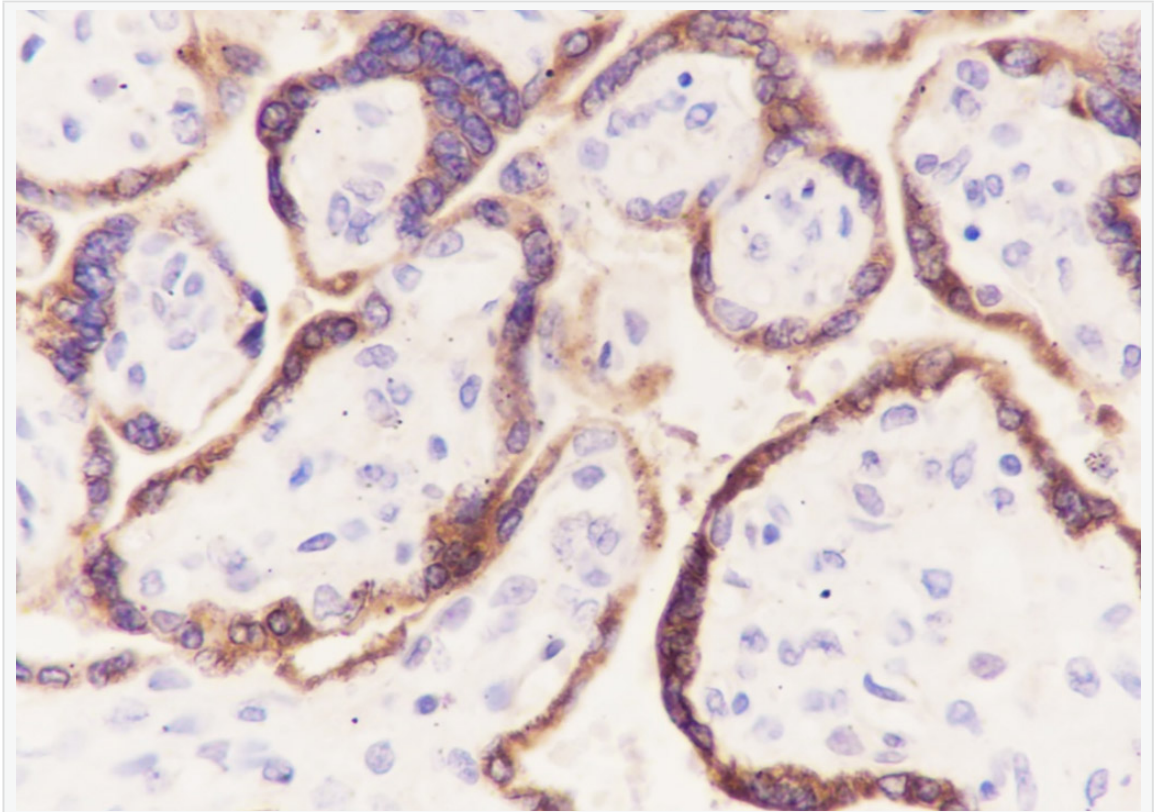
Lysate: JAR

Protein loading quantity: 20 μ g

Exposure time: 30 s

Predicted MW: 13 kDa

Observed MW: 18 kDa



Tissue: Human placenta

Section type: Formalin fixed & Paraffin -embedded section

Retrieval method: High temperature and high pressure

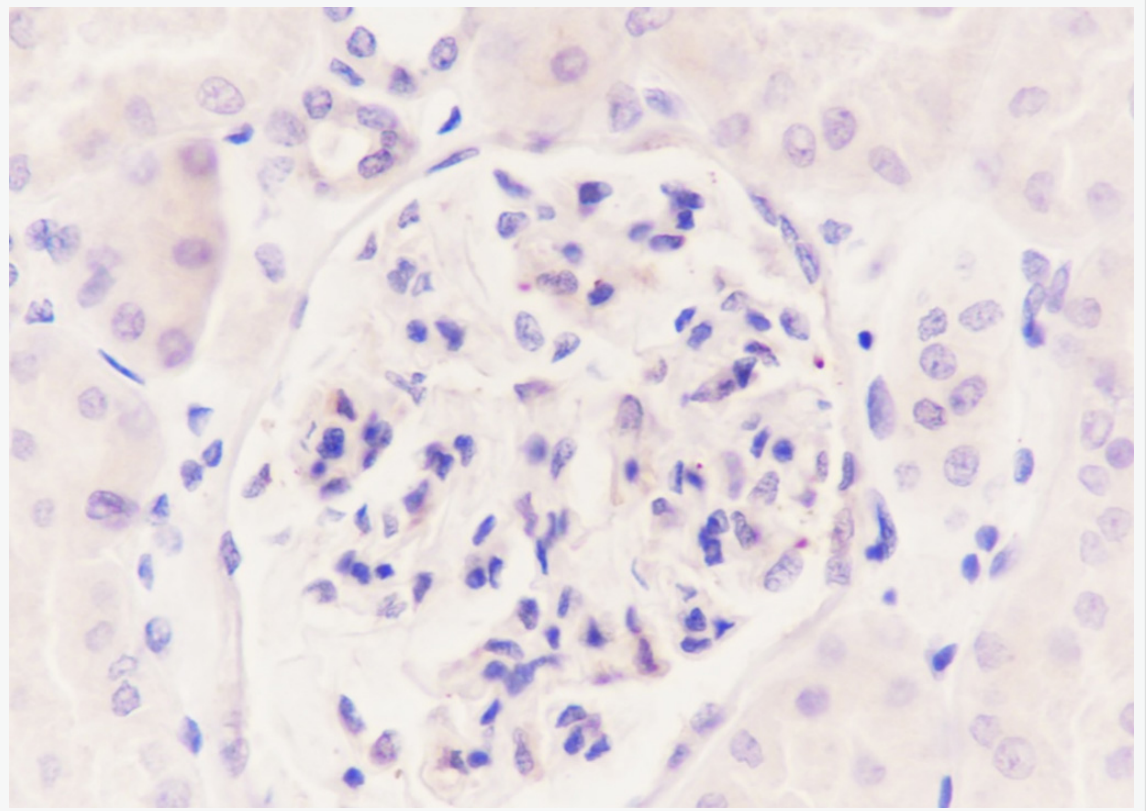
Retrieval buffer: Tris/EDTA buffer, pH 9.0 Primary ab dilution: 1:1000

Primary ab incubation condition: 1 hour at room temperature

Secondary ab: SP Kit(Rabbit) (sp-0023)

Counter stain: Hematoxylin (Blue)

Comment: Color brown is the positive signal for SLM-60623R



Tissue: Human kidney (Negative tissue)

Section type: Formalin fixed & Paraffin -embedded section

Retrieval method: High temperature and high pressure

Retrieval buffer: Tris/EDTA buffer, pH 9.0 Primary ab dilution: 1:1000

Primary ab incubation condition: 1 hour at room temperature

Secondary ab: Anti-Rabbit and Mouse Polymer HRP (Ready to use)

Counter stain: Hematoxylin (Blue)

Comment: Color brown is the positive signal for SLM-60623R