



Rabbit Anti-Oct6 antibody

SLM-60622R

Product Name Oct6

Chinese Name

Immunogen Species Rabbit

Clonality Monoclonal

Clone NO. F3F1

React Species Human,Mouse

Applications WB=1:500-2000,IHC-P=1:100-500,IHC-F=1:100-500,IF=1:100-500 (Paraffin sections need antigen repair)

not yet tested in other applications.

optimal dilutions/concentrations should be determined by the end user.

Cellular localization The nucleus

Form Liquid

Concentration 1mg/ml

Lsotype IgG

Purification Affinity purified by Protein A

Buffer Solution 1M TBS(pH7.4) with 1% BSA, 3% Proclin300 and 50% Glycerol.

Storage Shipped at 4°C. Store at -20 °C for one year. Avoid repeated freeze/thaw cycles.

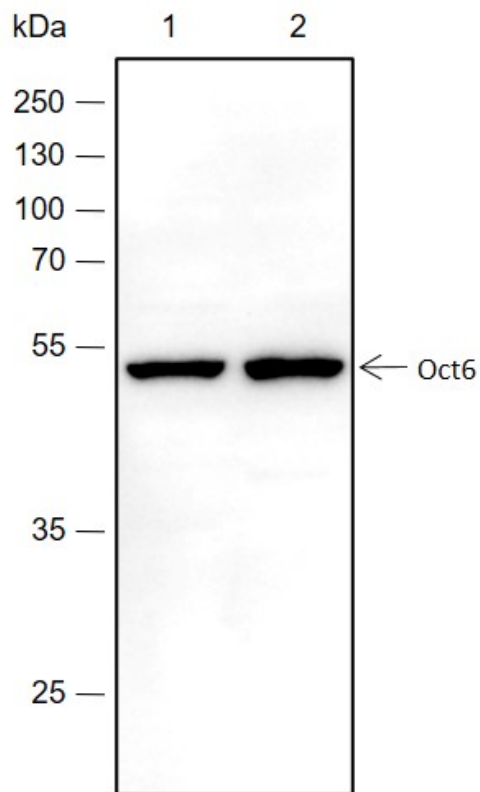
Attention This product as supplied is intended for research use only, not for use in human, therapeutic or diagnostic applications.

PubMed [PubMed](#)

Product Detail

Oct-6 是与八聚体基序(5'-ATTTGCAT-3')结合的转录因子。当与 SOX4、SOX11 或 SOX12 协同结合基因启动子时, 可以作为转录激活剂。也可作为髓鞘特异性基因的转录抑制因子。

**Product
Picture**



Blocking buffer: 5% NFDN/TBST

Primary ab dilution: 1:2000

Primary ab incubation condition: 2 hours at room temperature

Secondary ab: Goat Anti-Rabbit IgG H&L (HRP)

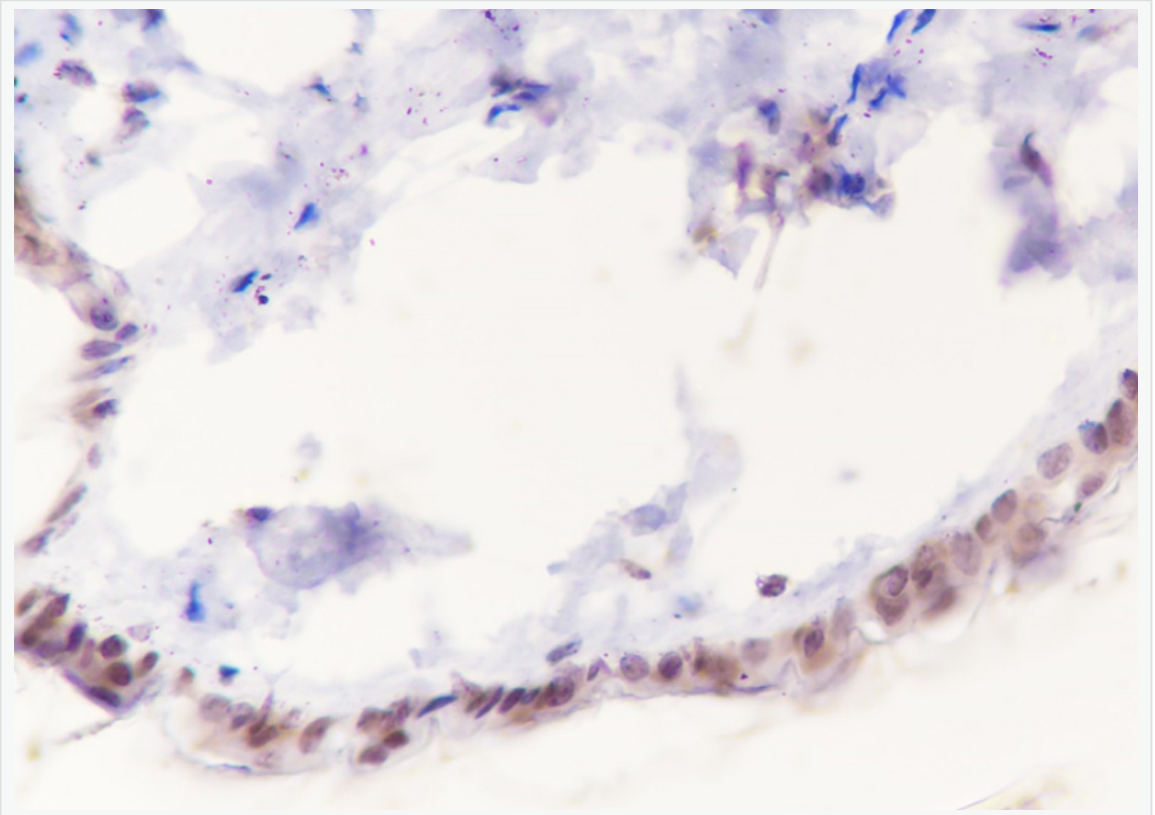
Lysate: 1: A549, 2: Jurkat

Protein loading quantity: 20 μ g

Exposure time: 30 s

Predicted MW: 45 kDa

Observed MW: 50 kDa



Tissue: Mouse skin

Section type: Formalin fixed & Paraffin -embedded section

Retrieval method: High temperature and high pressure

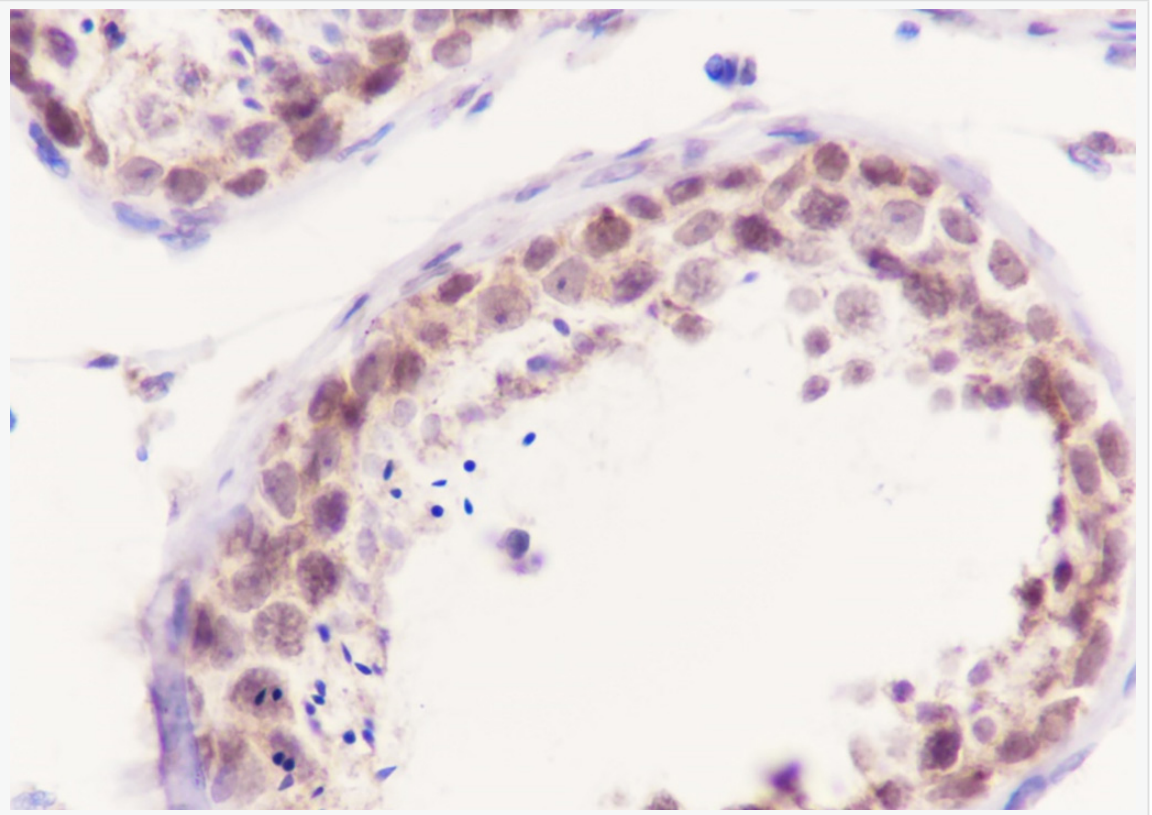
Retrieval buffer: Tris/EDTA buffer, pH 9.0 Primary ab dilution: 1:100

Primary ab incubation condition: 1 hour at room temperature

Secondary ab: SP Kit(Rabbit) (sp-0023)

Counter stain: Hematoxylin (Blue)

Comment: Color brown is the positive signal for SLM-60622R



Tissue: Human testis

Section type: Formalin fixed & Paraffin -embedded section

Retrieval method: High temperature and high pressure

Retrieval buffer: Tris/EDTA buffer, pH 9.0 Primary ab dilution: 1:100

Primary ab incubation condition: 1 hour at room temperature

Secondary ab: SP Kit(Rabbit) (sp-0023)

Counter stain: Hematoxylin (Blue)

Comment: Color brown is the positive signal for SLM-60622R