



Rabbit Anti-SMARCA2/BRM antibody

SLM-60621R

Product Name SMARCA2/BRM

Chinese Name

Immunogen Species Rabbit

Clonality Monoclonal

Clone NO. E7F8

React Species Human,Mouse,Rat

Applications IHC-P=1:50-200,IHC-F=1:50-200,IF=1:50-200 (Paraffin sections need antigen repair)
not yet tested in other applications.
optimal dilutions/concentrations should be determined by the end user.

Cellular localization The nucleus

Form Liquid

Concentration 1mg/ml

Lsotype IgG

Purification Affinity purified by Protein A

Buffer Solution 1M TBS(pH7.4) with 1% BSA, 3% Proclin300 and 50% Glycerol.

Storage Shipped at 4°C. Store at -20 °C for one year. Avoid repeated freeze/thaw cycles.

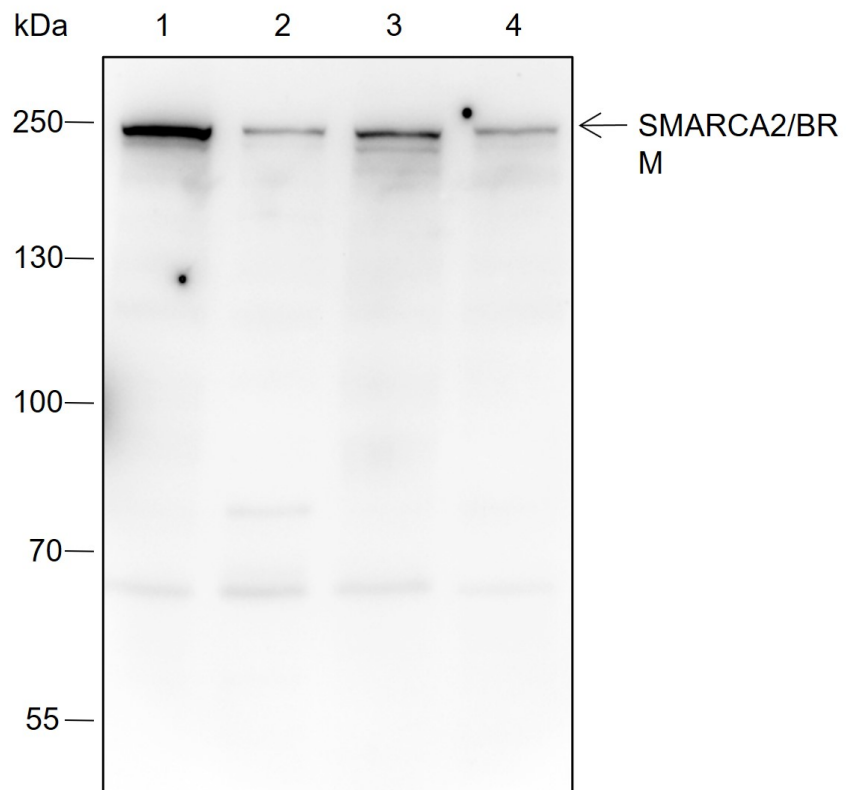
Attention This product as supplied is intended for research use only, not for use in human, therapeutic or diagnostic applications.

PubMed [PubMed](#)

Product Detail

通过染色质重塑 (DNA 核小体拓扑结构的改变) 参与选择基因的转录激活和抑制。SWI/SNF 染色质重塑复合物的组成部分, 执行关键的酶活性, 通过以 ATP 依赖的方式改变核小体内 DNA 组蛋白的接触来改变染色质结构。

**Product
Picture**



Blocking buffer: 5% NFDN/TBST

Primary ab dilution: 1:1000

Primary ab incubation condition: 2 hours at room temperature

Secondary ab: Goat Anti-Rabbit IgG H&L (HRP)

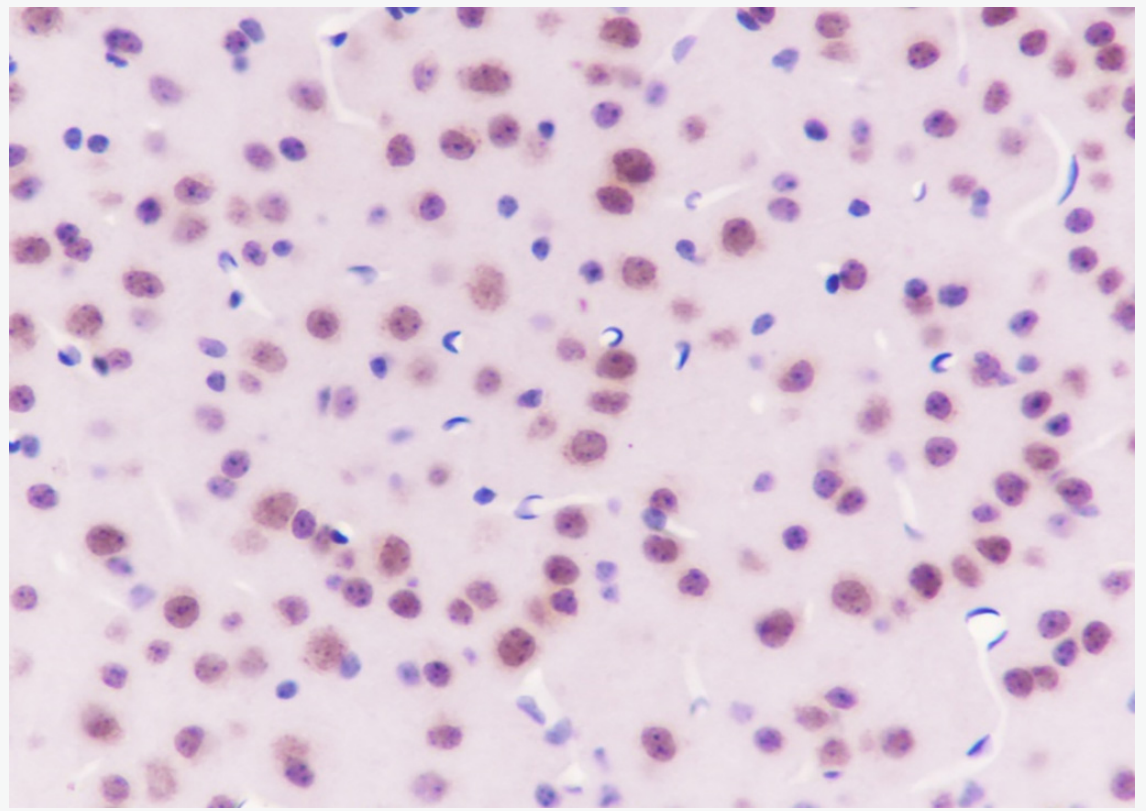
Lysate: 1: HeLa, 2: 293T, 3: MCF-7, 4: A549

Protein loading quantity: 20 μ g

Exposure time: 60 s

Predicted MW: 181 kDa

Observed MW: 200 kDa



Tissue: Mouse cerebrum

Section type: Formalin fixed & Paraffin -embedded section

Retrieval method: High temperature and high pressure

Retrieval buffer: Tris/EDTA buffer, pH 9.0 Primary ab dilution: 1:100

Primary ab incubation condition: 1 hour at room temperature

Secondary ab: SP Kit(Rabbit) (sp-0023)

Counter stain: Hematoxylin (Blue)

Comment: Color brown is the positive signal for SLM-60621R