



## Rabbit Anti-S100A2 antibody

SLM-60620R

**Product Name** S100A2

**Chinese Name**

**Immunogen Species** Rabbit

**Clonality** Monoclonal

**Clone NO.** H6A12

**React Species** Human

**Applications** IHC-P=1:100-500,IHC-F=1:100-500,IF=1:100-500 (Paraffin sections need antigen repair)

not yet tested in other applications.

optimal dilutions/concentrations should be determined by the end user.

**Cellular localization** The nucleus The cell membrane

**Form** Liquid

**Concentration** 1mg/ml

**Lsotype** IgG

**Purification** Affinity purified by Protein A

**Buffer Solution** 1M TBS(pH7.4) with 1% BSA, 3% Proclin300 and 50% Glycerol.

**Storage** Shipped at 4°C. Store at -20 °C for one year. Avoid repeated freeze/thaw cycles.

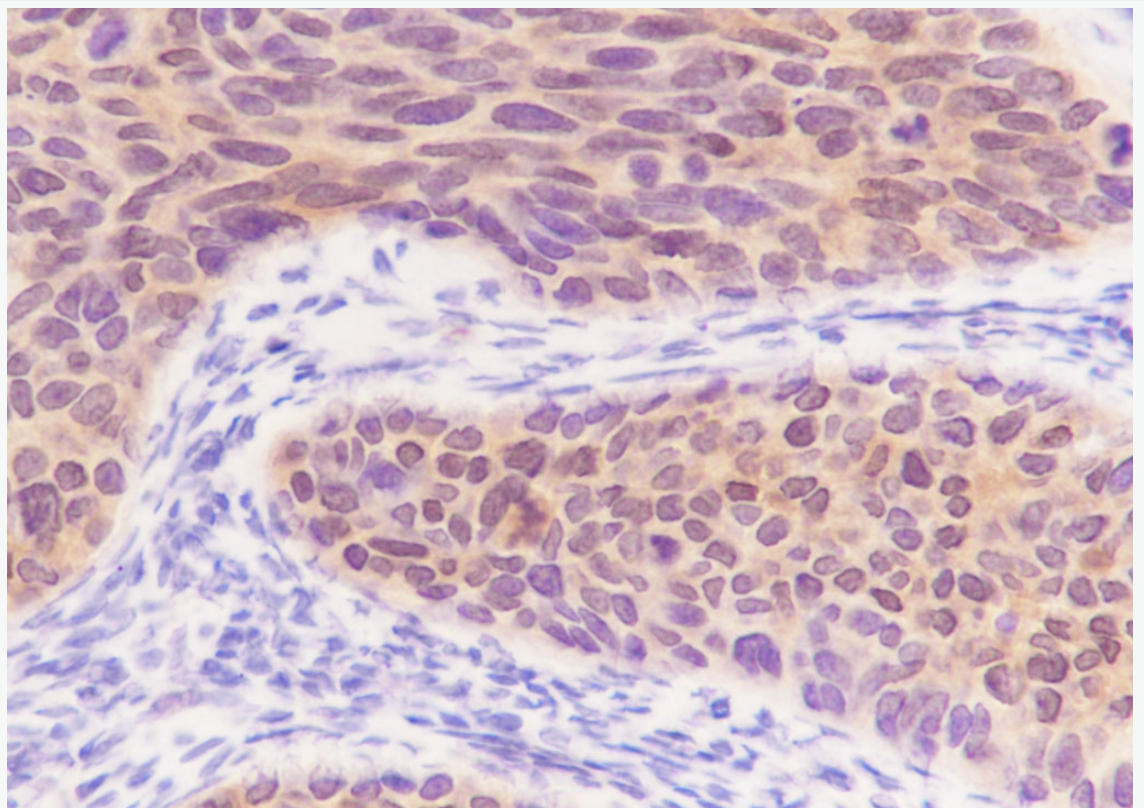
**Attention** This product as supplied is intended for research use only, not for use in human, therapeutic or diagnostic applications.

**PubMed** [PubMed](#)

**Product Detail**

可作为钙传感器和调节剂,促进细胞钙信号传导。可能通过与其他蛋白质(如含 TPR 的蛋白质)相互作用而发挥功能,并在许多生理过程中间接发挥作用。也可能在抑制 Tumour 细胞生长方面发挥作用。

**Product  
Picture**



Tissue: Human cervical carcinoma

Section type: Formalin fixed & Paraffin -embedded section

Retrieval method: High temperature and high pressure

Retrieval buffer: Tris/EDTA buffer, pH 9.0 Primary ab dilution: 1:100

Primary ab incubation condition: 1 hour at room temperature

Secondary ab: SP Kit(Rabbit) (sp-0023)

Counter stain: Hematoxylin (Blue)

Comment: Color brown is the positive signal for SLM-60620R