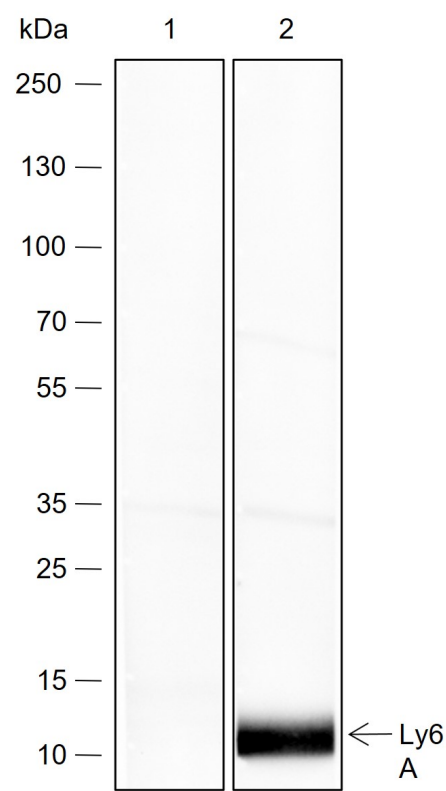


## Rabbit Anti-Ly6A antibody

SLM-60617R

<b>Product Name</b>	Ly6A
<b>Chinese Name</b>	
<b>Immunogen Species</b>	Rabbit
<b>Clonality</b>	Monoclonal
<b>Clone NO.</b>	E12A2
<b>React Species</b>	Mouse
<b>Applications</b>	WB=1:500-2000,IHC-P=1:100-500,IHC-F=1:100-500,IF=1:100-500 (Paraffin sections need antigen repair) not yet tested in other applications. optimal dilutions/concentrations should be determined by the end user.
<b>Cellular localization</b>	cytoplasmic
<b>Form</b>	Liquid
<b>Concentration</b>	1mg/ml
<b>Lsotype</b>	IgG
<b>Purification</b>	Affinity purified by Protein A
<b>Buffer Solution</b>	1M TBS(pH7.4) with 1% BSA, 3% Proclin300 and 50% Glycerol.
<b>Storage</b>	Shipped at 4°C. Store at -20 °C for one year. Avoid repeated freeze/thaw cycles.
<b>Attention</b>	This product as supplied is intended for research use only, not for use in human, therapeutic or diagnostic applications.
<b>PubMed</b>	<a href="#">PubMed</a>
<b>Product Detail</b>	Stem cells 抗原 1 (Ly6A) 是 lymphocyte 抗原 6 (Ly-6) 家族的成员, 是小鼠造血祖细胞/Stem cells 亚群的主要表型 Marker。Ly-6 家族参与 B 细胞和 T 细胞活化的调节。Ly6A 在多能造血 Stem cells (HSC) 上表达, 并用作小鼠 HSC 的 Marker。Ly6A 在胎儿肝脏、成人骨髓、成人外周血和脾脏中普遍存在。

**Product  
Picture**



Blocking buffer: 5% NFDM/TBST

Primary ab dilution: 1:2000

Primary ab incubation condition: 2 hours at room temperature

Secondary ab: Goat Anti-Rabbit IgG H&L (HRP)

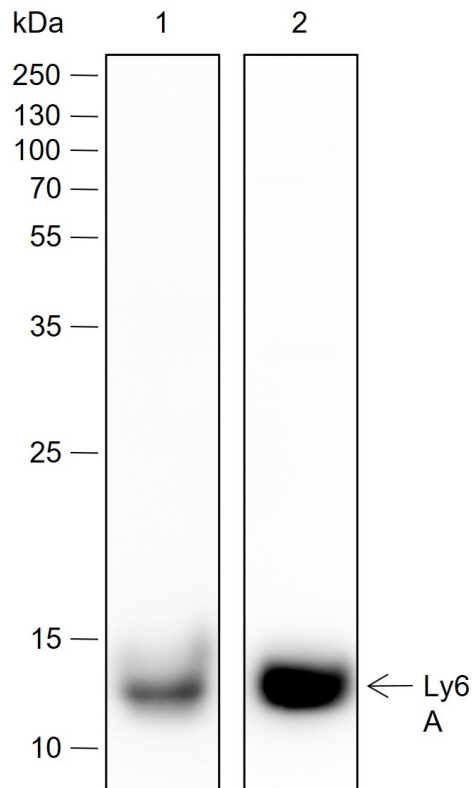
Lysate: 1: C2C12 cell lysate, the Ly6A Rabbit mAb pre-adsorbed with 3 $\mu$ M of the synthetic peptides; 2: C2C12 cell lysate, the Ly6A Rabbit mAb with no peptide blocking.

Protein loading quantity: 20  $\mu$ g

Exposure time: 10 s

Predicted MW: 14 kDa

Observed MW: 13 kDa



Blocking buffer: 5% NFDm/TBST

Primary ab dilution: 1:2000

Primary ab incubation condition: 2 hours at room temperature

Secondary ab: Goat Anti-Rabbit IgG H&L (HRP)

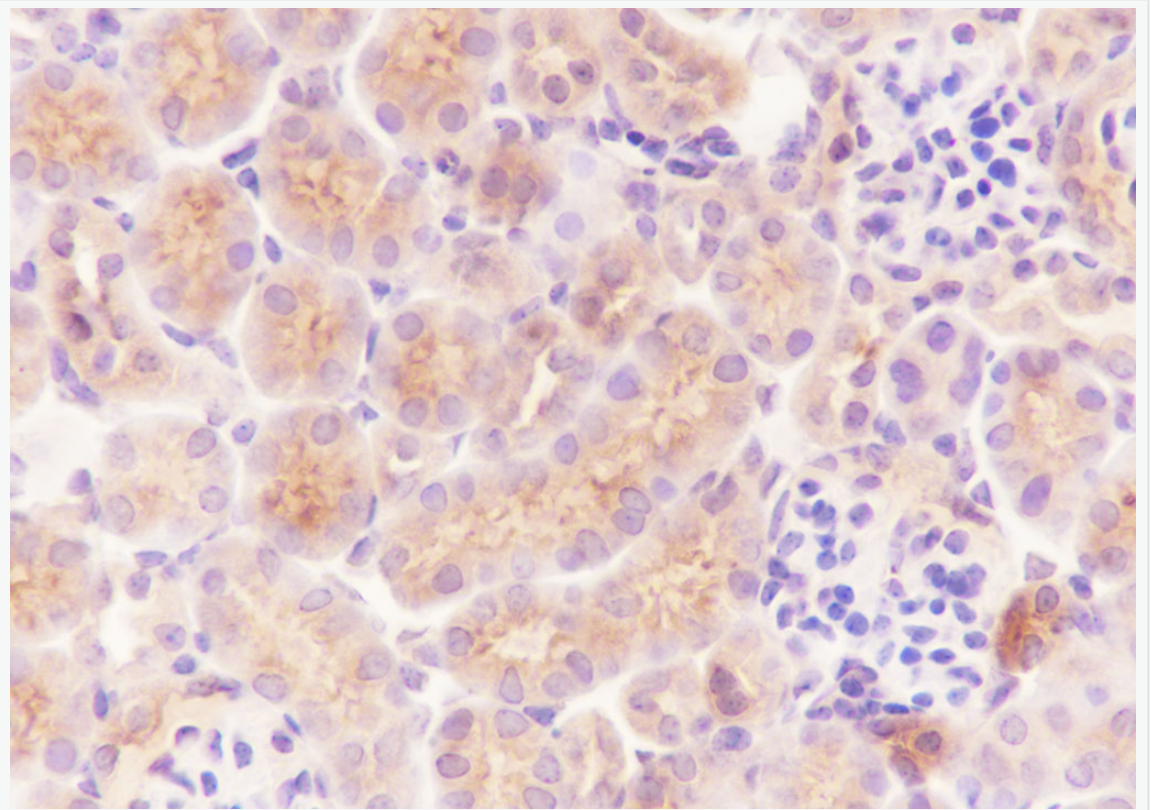
Lysate: 1: Mouse thymus, 2: C2C12

Protein loading quantity: 20  $\mu$ g

Exposure time: 60 s

Predicted MW: 14 kDa

Observed MW: 13 kDa



Tissue: Mouse testis

Section type: Formalin fixed & Paraffin -embedded section

Retrieval method: High temperature and high pressure

Retrieval buffer: Tris/EDTA buffer, pH 9.0 Primary ab dilution: 1:100

Primary ab incubation condition: 1 hour at room temperature

Secondary ab: SP Kit(Rabbit) (sp-0023)

Counter stain: Hematoxylin (Blue)

Comment: Color brown is the positive signal for SLM-60617R



SunLong Biotech Co.,LTD  
Tel: 0086-571-56623320 Fax:0086-571-56623318  
E-mail:sales@sunlongbiotech.com  
www.sunlongbiotech.com

---