



Rabbit Anti-SF1 antibody

SLM-60616R

Product Name SF1**Chinese Name** 剪接因子 1Recombinant rabbit monoclonal anti**Alias** SF01_HUMAN; Splicing factor 1; ZFM1; ZNF162; Mammalian branch point-binding protein (mBBP); Transcription factor ZFM1; Zinc finger gene in MEN1 locus; Zinc finger protein 162;**Immunogen Species** Rabbit**Clonality** Monoclonal**Clone NO.** E1F12**React Species** Human,Mouse,RatWB=1:500-2000,IHC-P=1:100-500,IHC-F=1:100-500,ICC/IF=1:50-200,IF=1:100-500,Flow-Cytometry
(Paraffin sections need antigen repair)**Applications** not yet tested in other applications.
optimal dilutions/concentrations should be determined by the end user.**Cellular localization** The nucleus**Form** Liquid**Concentration** 1mg/ml**Lsotype** IgG**Purification** Affinity purified by Protein A**Buffer Solution** 1M TBS(pH7.4) with 1% BSA, 3% Proclin300 and 50% Glycerol.**Storage** Shipped at 4°C. Store at -20 °C for one year. Avoid repeated freeze/thaw cycles.**Attention** This product as supplied is intended for research use only, not for use in human, therapeutic or diagnostic applications.**PubMed** [PubMed](#)

This gene encodes a nuclear pre-mRNA splicing factor. The encoded protein specifically recognizes the intron branch point sequence and is required for the early stages of spliceosome assembly. Alternative splicing results in multiple transcript variants. [provided by RefSeq, May 2010]

Product Detail**Subcellular Location:**
Nuclear.

Tissue Specificity:

Detected in lung, ovary, adrenal gland, colon, kidney, muscle, pancreas, thyroid, placenta, brain, heart.

SWISS:

Q15637

Gene ID:

7536

Database links:

[Entrez Gene: 7536](#) Human

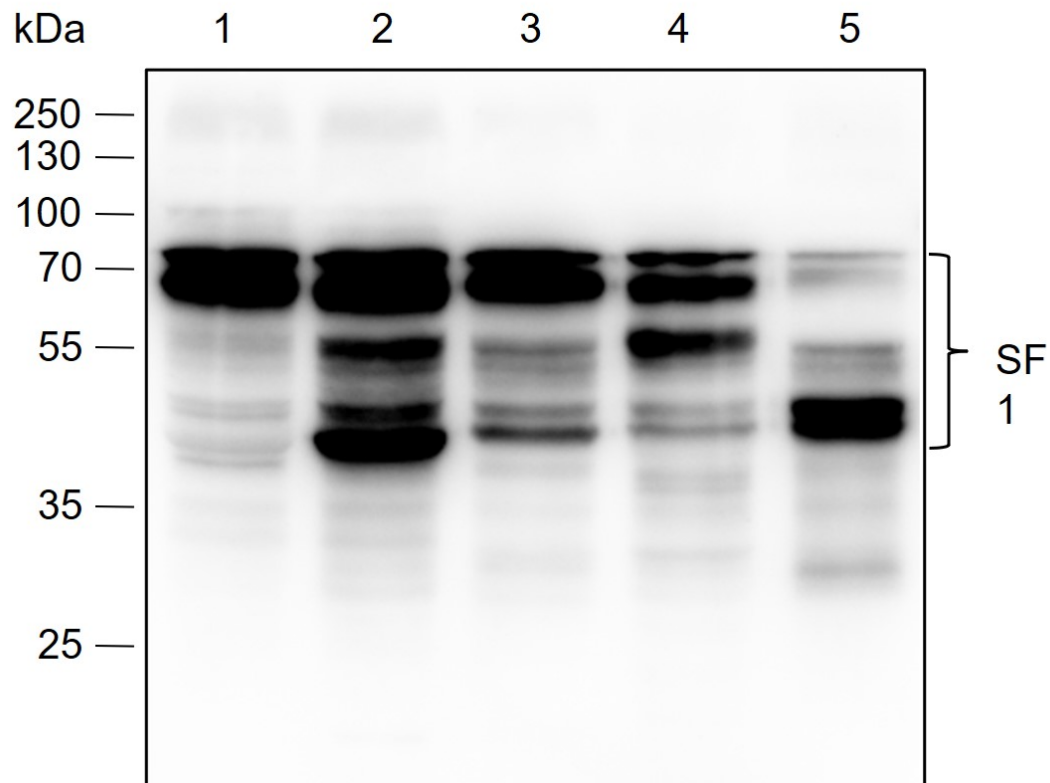
[Entrez Gene: 22668](#) Mouse

[SwissProt: Q15637](#) Human

[SwissProt: Q64213](#) Mouse

剪接体组装的 ATP 依赖的第一步所必需的。与前 mRNA 的内含子分支点序列 (BPS) 5'-结合。可能作为转录抑制因子。

**Product
Picture**



Blocking buffer: 5% NFDm/TBST

Primary ab dilution: 1:2000

Primary ab incubation condition: 2 hours at room temperature

Secondary ab: Goat Anti-Rabbit IgG H&L (HRP)

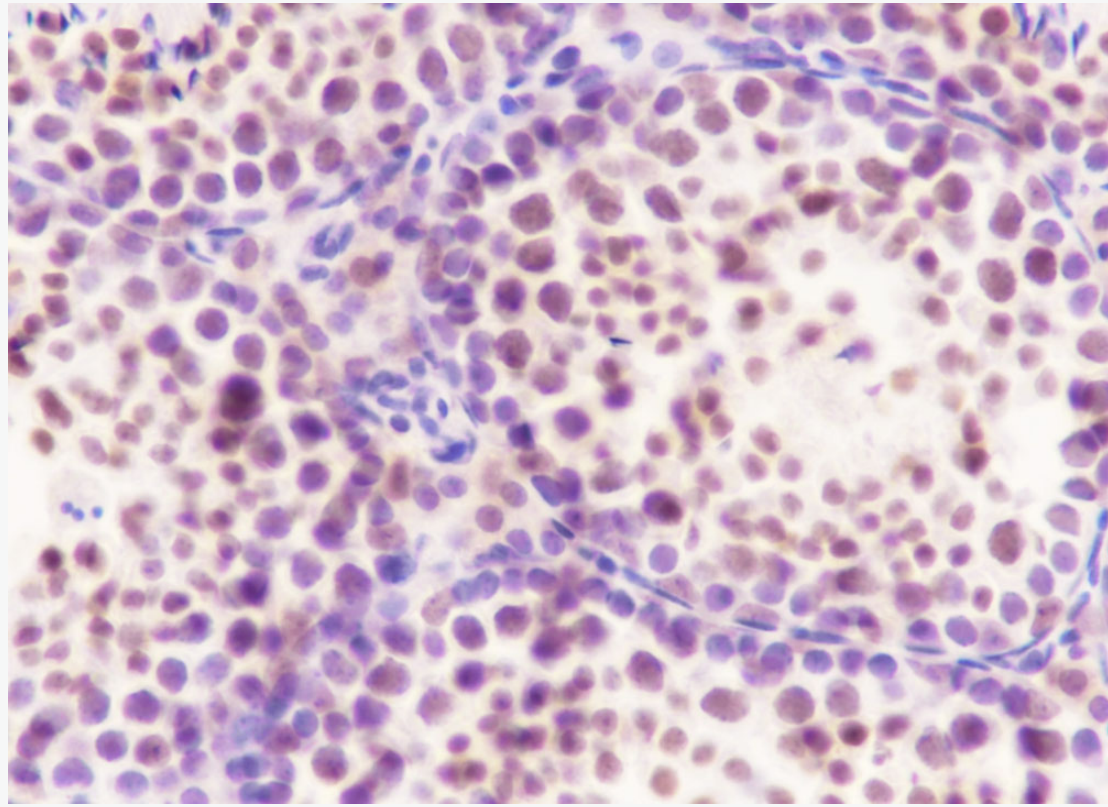
Lysate: 1: HeLa, 2: HepG2, 3: PC-12, 4: NIH-3T3, 5: Mouse testis

Protein loading quantity: 20 μ g

Exposure time: 60 s

Predicted MW: 52 kDa

Observed MW: 50-75 kDa



Tissue: Mouse testis

Section type: Formalin fixed & Paraffin -embedded section

Retrieval method: High temperature and high pressure

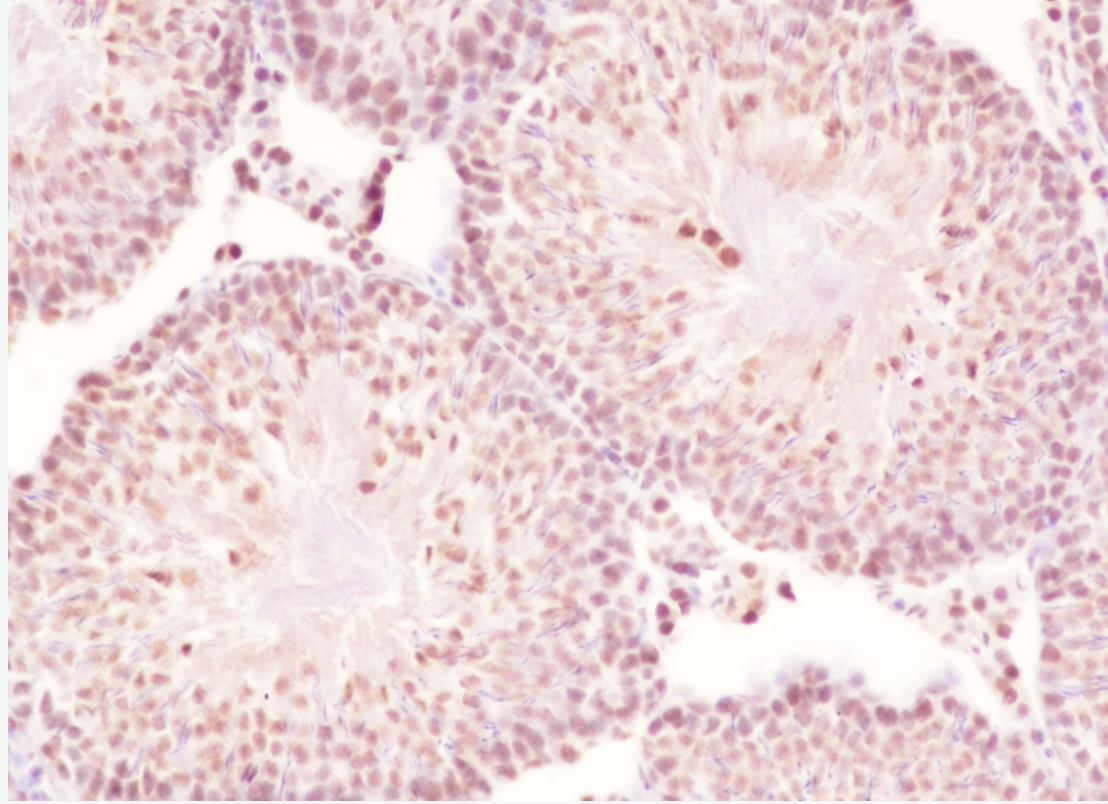
Retrieval buffer: Tris/EDTA buffer, pH 9.0 Primary ab dilution: 1:1000

Primary ab incubation condition: 1 hour at room temperature

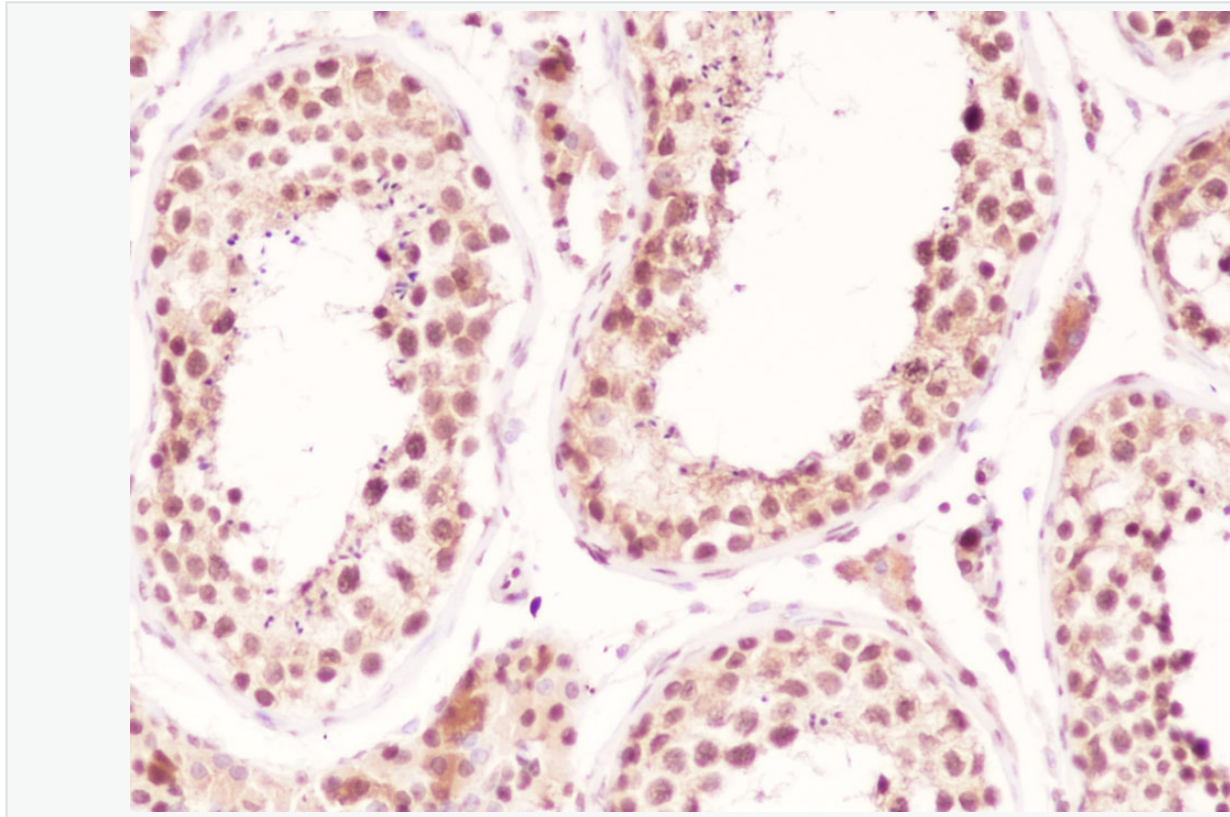
Secondary ab: SP Kit(Rabbit) (sp-0023)

Counter stain: Hematoxylin (Blue)

Comment: Color brown is the positive signal for SLM-60616R



Tissue: Rat testis Section type: Formalin fixed & Paraffin -embedded section Retrieval method: microwave temperature and high pressure Retrieval buffer: Tris/EDTA buffer, pH 9.0 Primary ab dilution: 1:1000
Primary ab incubation condition: 1 hour at room temperature Secondary ab: SP Kit(Rabbit) (S) (1:1000)
Counter stain: Hematoxylin (Blue) Comment: Color brown is the positive signal for SLM-606



Tissue: Human testis

Section type: Formalin fixed & Paraffin -embedded section

Retrieval method: High temperature and high pressure

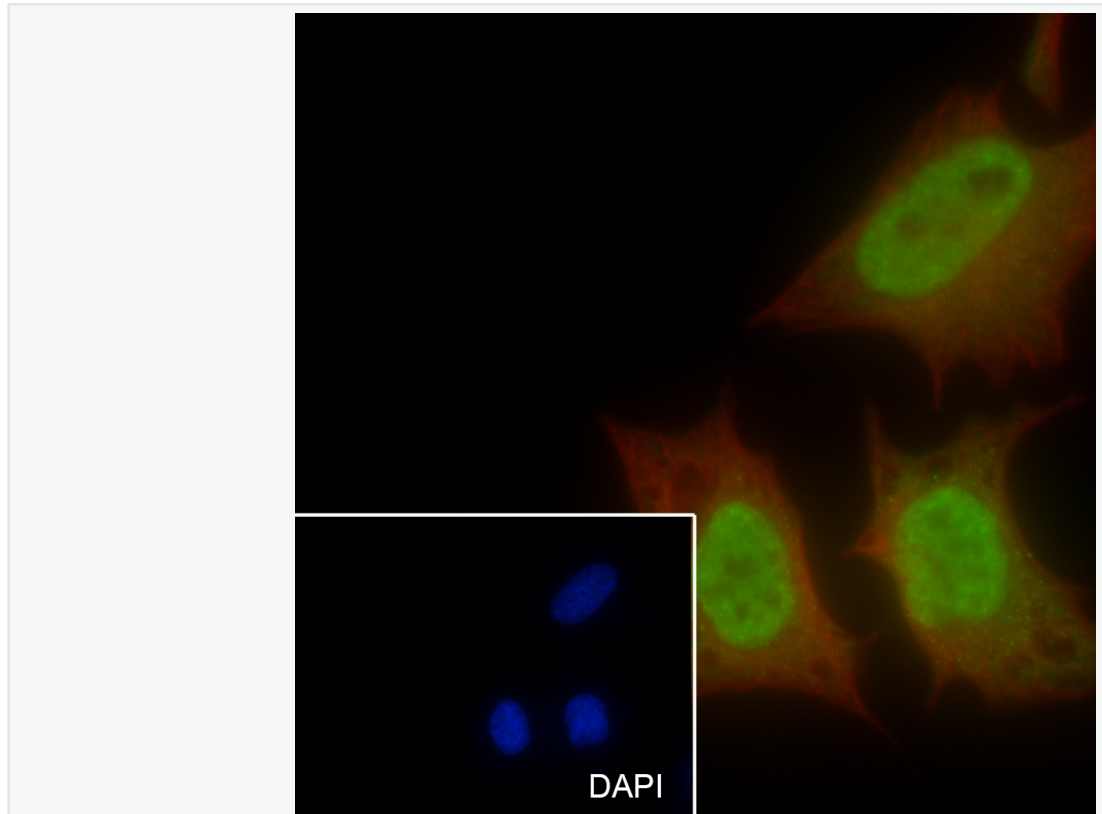
Retrieval buffer: Tris/EDTA buffer, pH 9.0 Primary ab dilution: 1:1000

Primary ab incubation condition: 1 hour at room temperature

Secondary ab: SP Kit(Rabbit) (sp-0023)

Counter stain: Hematoxylin (Blue)

Comment: Color brown is the positive signal for SLM-60616R



Cell line: HeLa

Fixative: 4% Paraformaldehyde

Permeabilization: 0.1% TritonX-100

Primary ab dilution: 1:50

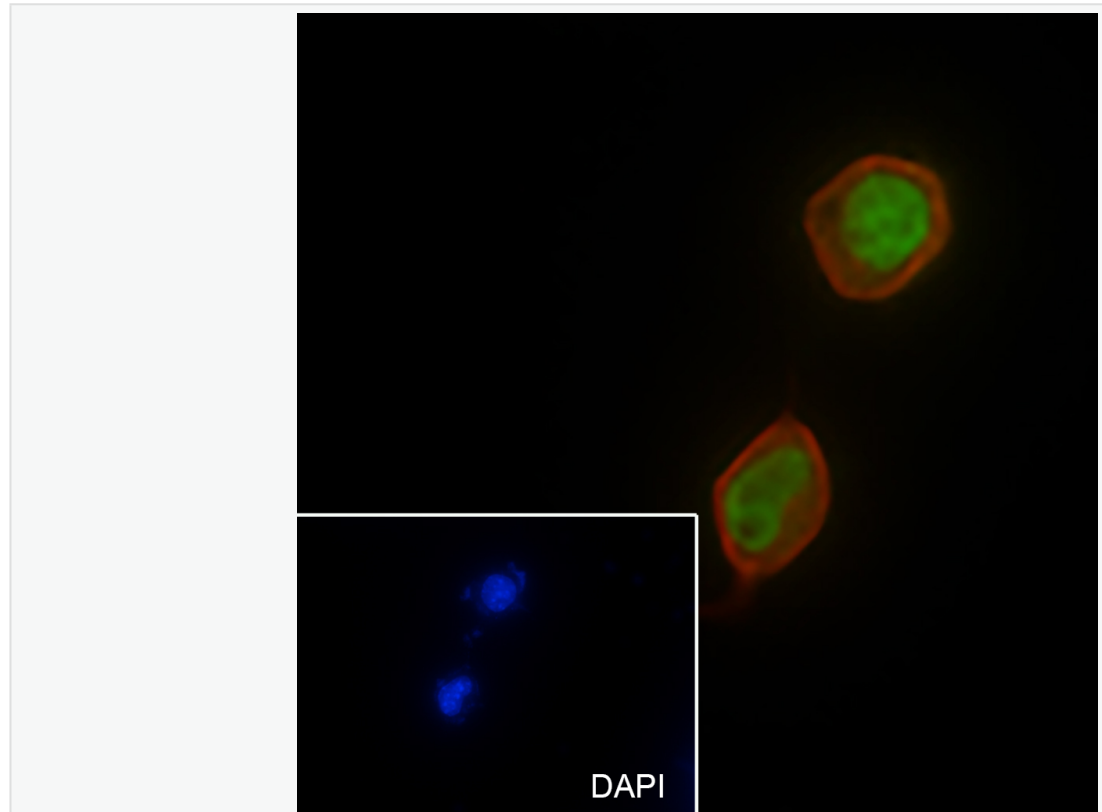
Primary incubation condition: 4°C overnight

Secondary ab: Goat Anti-Rabbit IgG

Nuclear counter stain: DAPI (Blue)

Counter stain: Tubulin (Red)

Comment: Color green is the positive signal for SLM-60616R



Cell line: Neuro-2a

Fixative: 4% Paraformaldehyde

Permeabilization: 0.1% TritonX-100

Primary ab dilution: 1:50

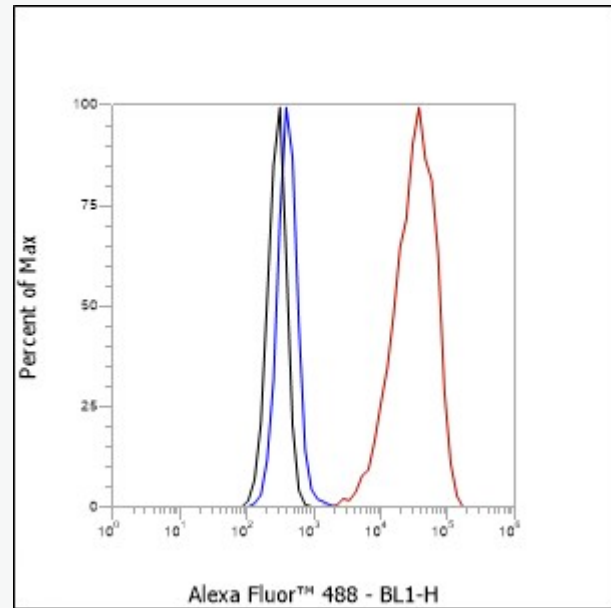
Primary incubation condition: 4°C overnight

Secondary ab: Goat Anti-Rabbit IgG

Nuclear counter stain: DAPI (Blue)

Counter stain: Tubulin (Red)

Comment: Color green is the positive signal for SLM-60616R



Cell line: HeLa

Fixative: 4% Paraformaldehyde

Permeabilization: 90% Methanol

Primary ab dilution: 1:100

Secondary ab: Goat anti Rabbit IgG

Unlabelled control: The cell without incubation with primary antibody and secondary antibody (black line).

Isotype control: Rabbit monoclonal IgG (Blue line).

Comment: Line red is the positive signal for SLM-60616R