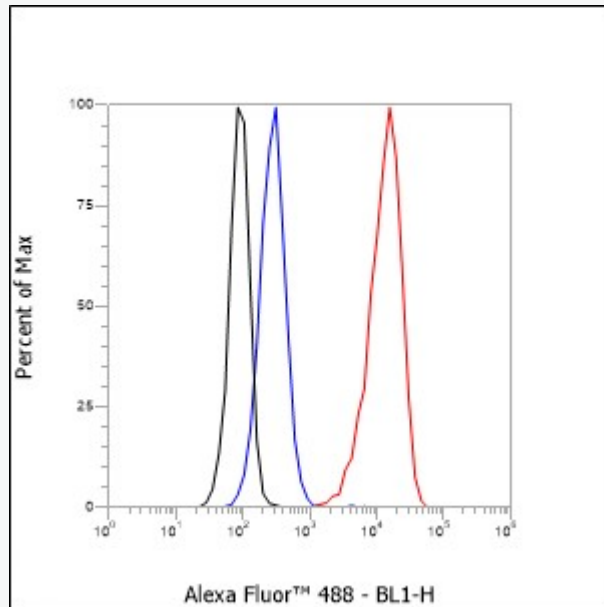


Rabbit Anti-CD25 antibody

SLM-60613R

Product Name	CD25
Chinese Name	白介素 2 受体 α 链/ICD25Recombinant rabbit monoclonal anti Interleukin 2 receptor alpha chain; CD 25; CD25; CD25 antigen; IDDM10; IL 2 RA; IL 2 receptor alpha subunit; IL2 RA; IL-2RA; IL2R; IL2RA; IL2RAC; Alias Interleukin 2 Receptor Alpha; Interleukin 2 receptor alpha chain; Interleukin 2 receptor; Ly43; p55; T Cell Growth Factor Receptor; TAC Antigen; TCGFR; IL2RA_HUMAN.
Immunogen Species	Rabbit
Clonality	Monoclonal
Clone NO.	H12C8
React Species	Human Flow-Cyt=1ug/Test,WB=1:500-2000
Applications	not yet tested in other applications. optimal dilutions/concentrations should be determined by the end user.
Cellular localization	cytoplasmic
Form	Liquid
Concentration	1mg/ml
Lsotype	IgG
Purification	Affinity purified by Protein A
Buffer Solution	1M TBS(pH7.4) with 1% BSA, 3% Proclin300 and 50% Glycerol.
Storage	Shipped at 4°C. Store at -20 °C for one year. Avoid repeated freeze/thaw cycles.
Attention	This product as supplied is intended for research use only, not for use in human, therapeutic or diagnostic applications.
PubMed	PubMed
Product Detail	白细胞介素 2 (IL2) 受体 α (IL2RA) 和 β (IL2RB) 链与共同的 γ 链 (IL2RG) 一起构成高亲和力 IL2 受体。同源二聚体 α 链 (IL2RA) 产生 低亲和力受体, 而同源二聚体 β (IL2RB) 链产生中等亲和力受体。通常, 一种完整的膜蛋白、可溶性 IL2RA 已被分离并确定是由细胞外蛋白水

解产生的。交替剪接的 IL2RA mRNA 已被分离出来，但每个的意义目前尚不清楚。该基因的突变与白细胞介素 2 受体 α 缺陷有关。2019 年严重冠状病毒病 (COVID-19)(由新型严重急性呼吸系统综合症冠状病毒 2 (SARS-CoV-2) 引起的疾病) 患者血浆中的 IL2R 水平显着升高。同样，发现不同类型癌症患者的血清 IL-2R 水平升高。某些 IL2RA 和 IL2RB 基因多态性与肺癌风险相关。



Product Picture

Cell line: Jurkat

Fixative: 4% Paraformaldehyde

Permeabilization: 0.1% TritonX-100

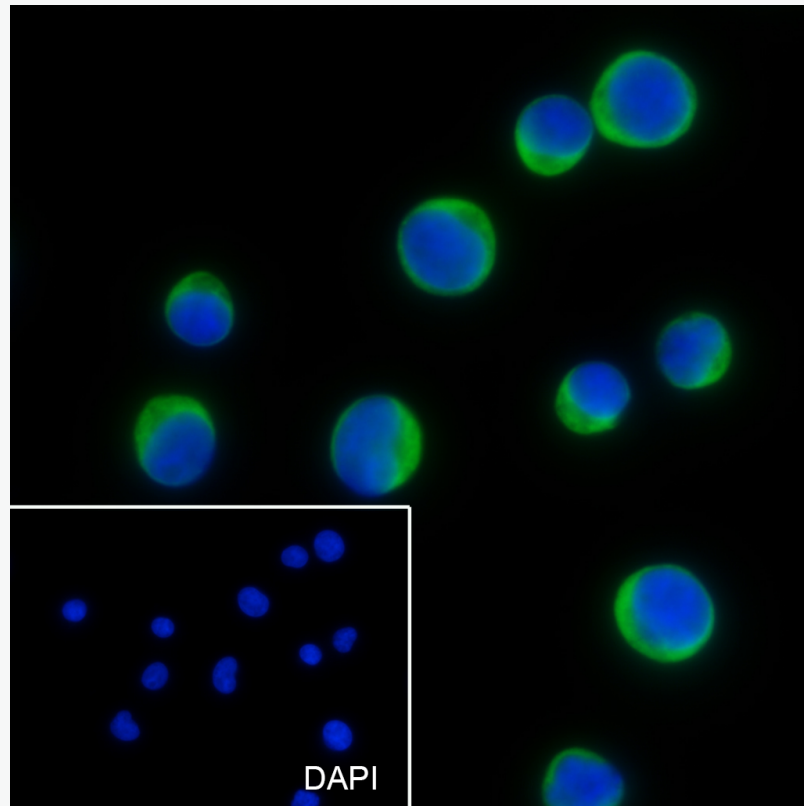
Primary ab dilution: 1:100

Secondary ab: Goat anti Rabbit IgG

Unlabelled control: The cell without incubation with primary antibody and secondary antibody (Black line).

Isotype control: Rabbit monoclonal IgG (Blue line).

Comment: Line red is the positive signal for SLM-60613R



Cell line: Jurkat

Fixative: 4% Paraformaldehyde

Permeabilization: 0.1% TritonX-100

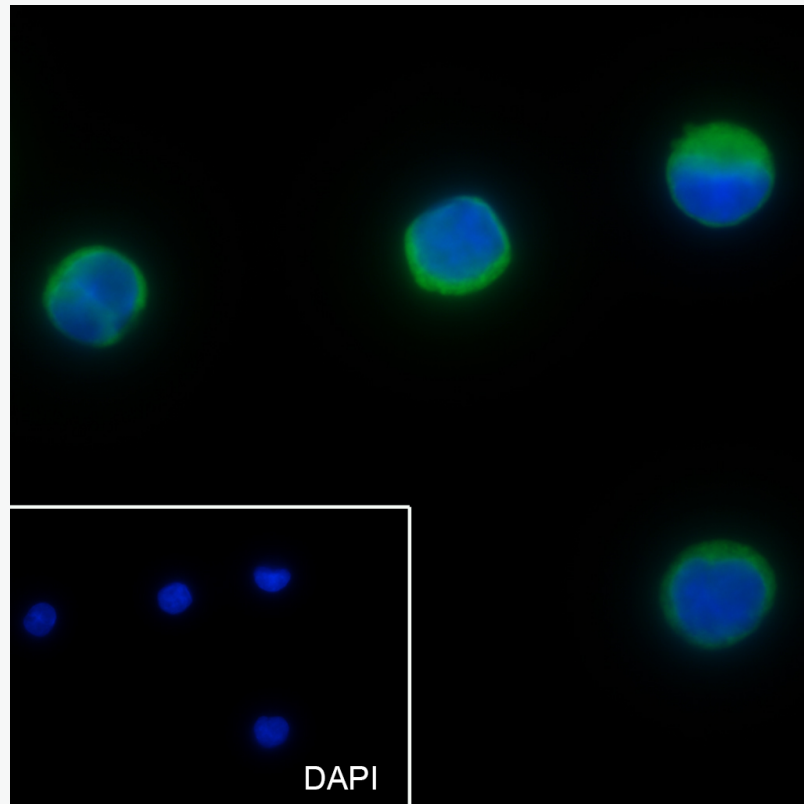
Primary ab dilution: 1:50

Primary incubation condition: 4°C overnight

Secondary ab: Goat Anti-Rabbit IgG

Nuclear counter stain: DAPI (Blue)

Comment: Color green is the positive signal for SLM-60613R



Cell line: K562

Fixative: 4% Paraformaldehyde

Permeabilization: 0.1% TritonX-100

Primary ab dilution: 1:50

Primary incubation condition: 4°C overnight

Secondary ab: Goat Anti-Rabbit IgG

Nuclear counter stain: DAPI (Blue)

Comment: Color green is the positive signal for SLM-60613R