

## Rabbit Anti-CDX2 antibody

SLM-60612R

**Product Name** CDX2

**Chinese Name** 尾型同源盒转录因子 2Recombinant rabbit monoclonal anti

**Alias** cau-dal-related homeobox transcription factor 2; Caudal type homeo box 2; Caudal type homeobox protein 2; caudal type homeobox transcription factor 2; CDX 2; CDX 3; CDX3; Homeobox protein CDX-2; Homeobox protein CDX2; CDX2\_HUMAN.

**Research Area** Tumour Cardiovascular immunology Neurobiology Signal transduction Stem cells Kinases and Phosphatases

**Immunogen Species** Rabbit

**Clonality** Monoclonal

**Clone NO.** G7H9

**React Species** Human

**Applications** IHC-P=1:50-200,IHC-F=1:50-200,IF=1:50-200,Flow-Cyt=1:50-100 (Paraffin sections need antigen repair)  
not yet tested in other applications.  
optimal dilutions/concentrations should be determined by the end user.

**Theoretical molecular weight** 34kDa

**Cellular localization** The nucleus

**Form** Liquid

**Concentration** 1mg/ml

**immunogen** KLH conjugated synthetic peptide derived from human CDX2

**Lsotype** IgG

**Purification** affinity purified by Protein A

**Buffer Solution** Human1M TBS(pH7.4) with 1% BSA, Human3% Proclin300 and 50% Glycerol.

**Storage** Shipped at 4°C. Store at -20 °C for one year. Avoid repeated freeze/thaw cycles.

**Attention** This product as supplied is intended for research use only, not for use in human, therapeutic or diagnostic applications.



**PubMed**

[PubMed](#)

This gene is a member of the caudal-related homeobox transcription factor gene family. The encoded protein is a major regulator of intestine-specific genes involved in cell growth and differentiation. This protein also plays a role in early embryonic development of the intestinal tract. Aberrant expression of this gene is associated with intestinal inflammation and tumorigenesis. [provided by RefSeq, Jan 2012]

**SWISS:**

Q99626

**Product  
Detail**

**Gene ID:**

1045

**Database links:**

[Entrez Gene: 1045](#) Human

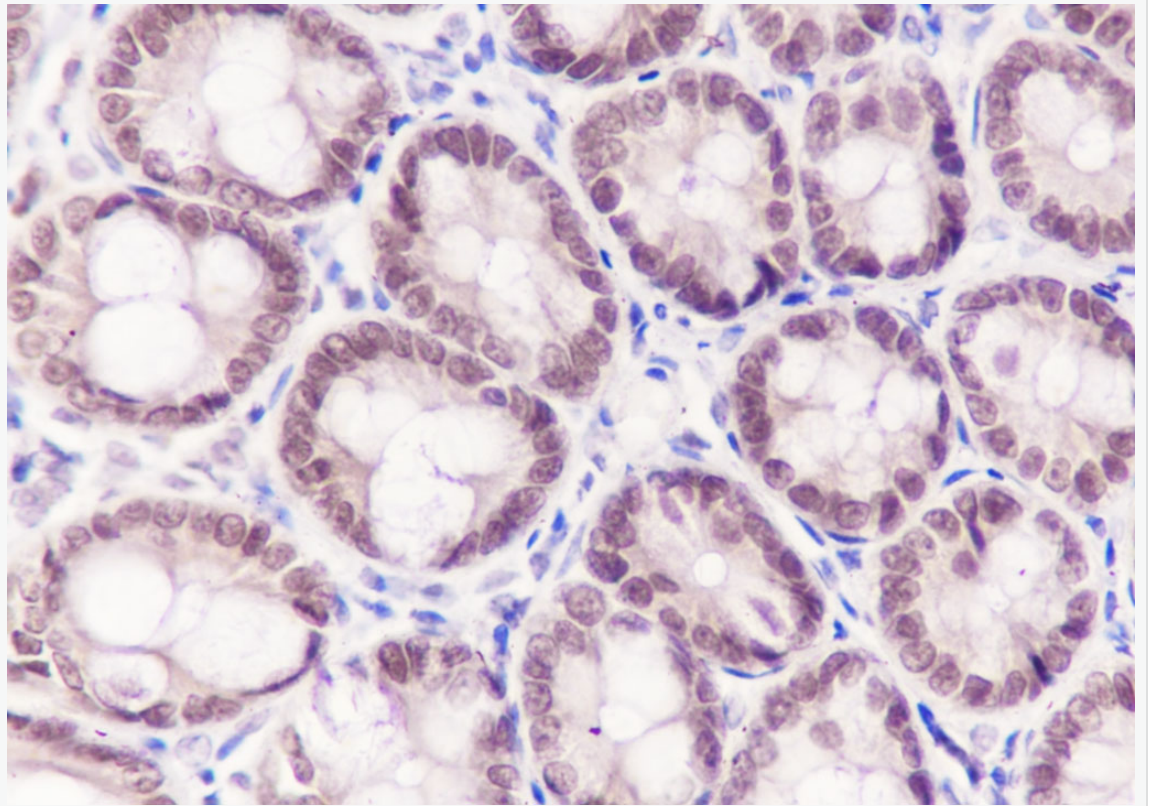
[Entrez Gene: 12591](#) Mouse

[Entrez Gene: 66019](#) Rat

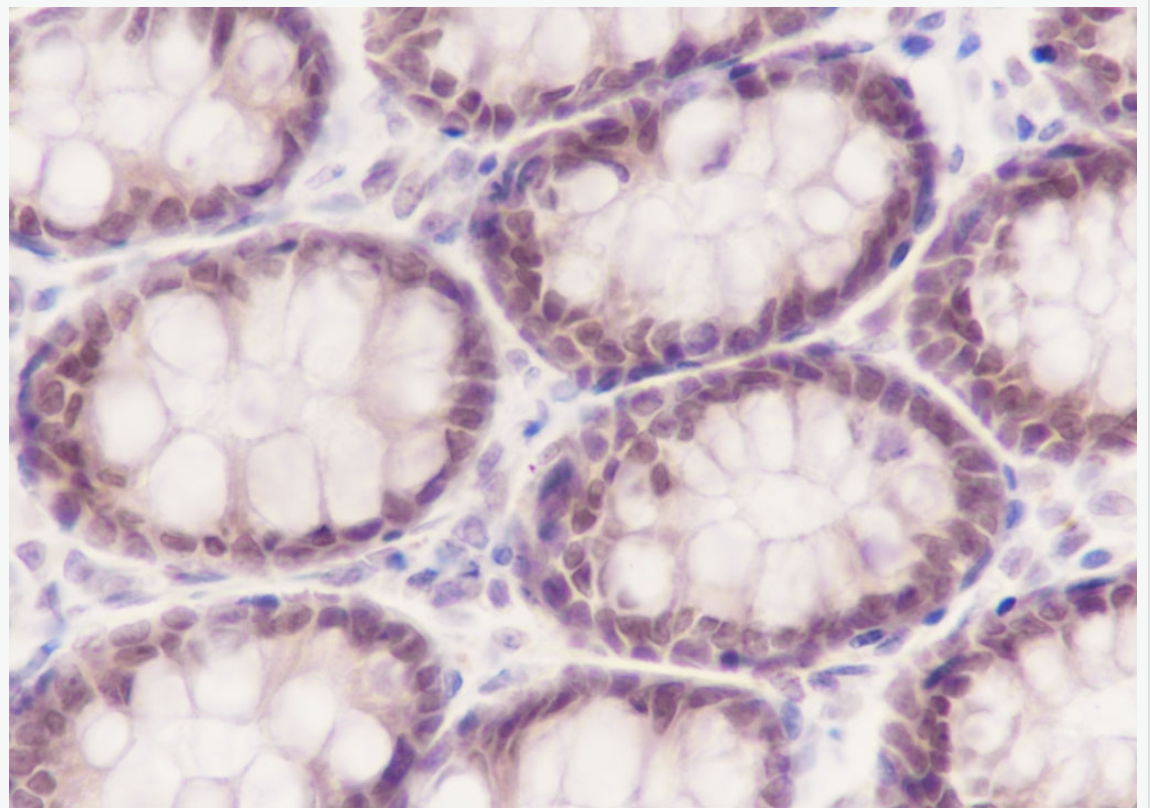
[SwissProt: Q99626](#) Human

[SwissProt: P43241](#) Mouse

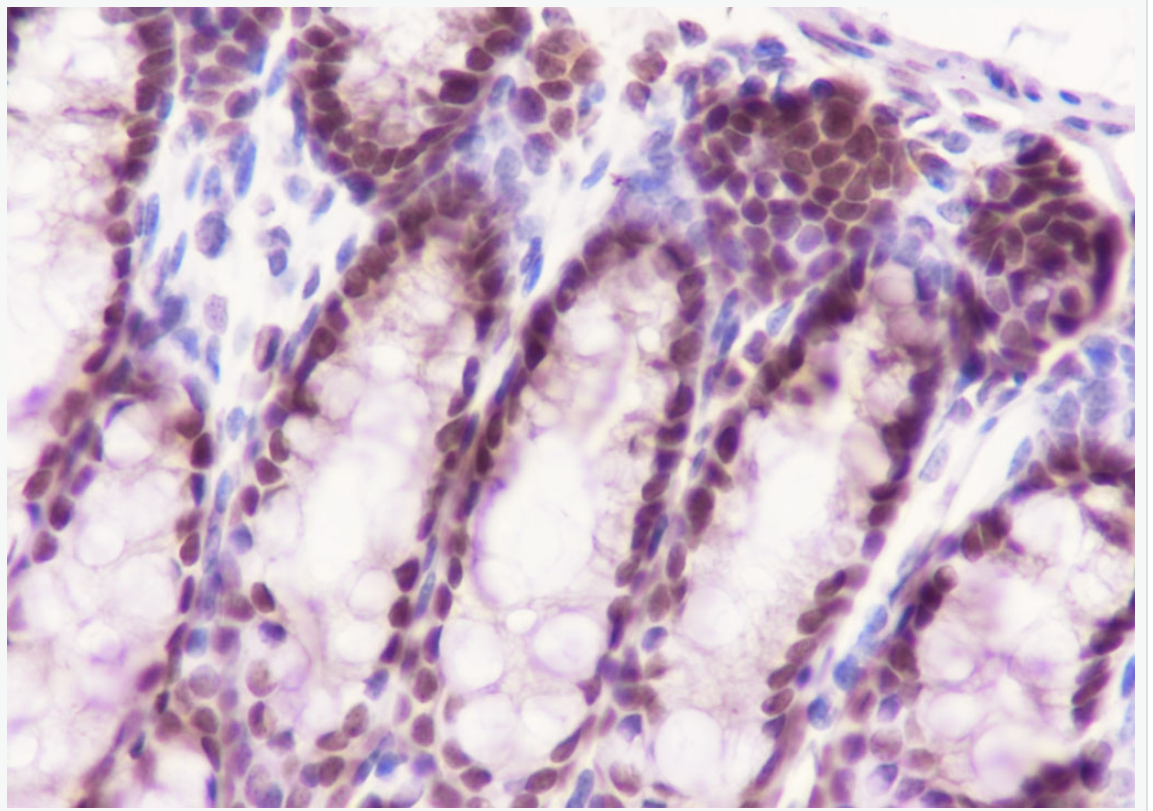
**Product  
Picture**



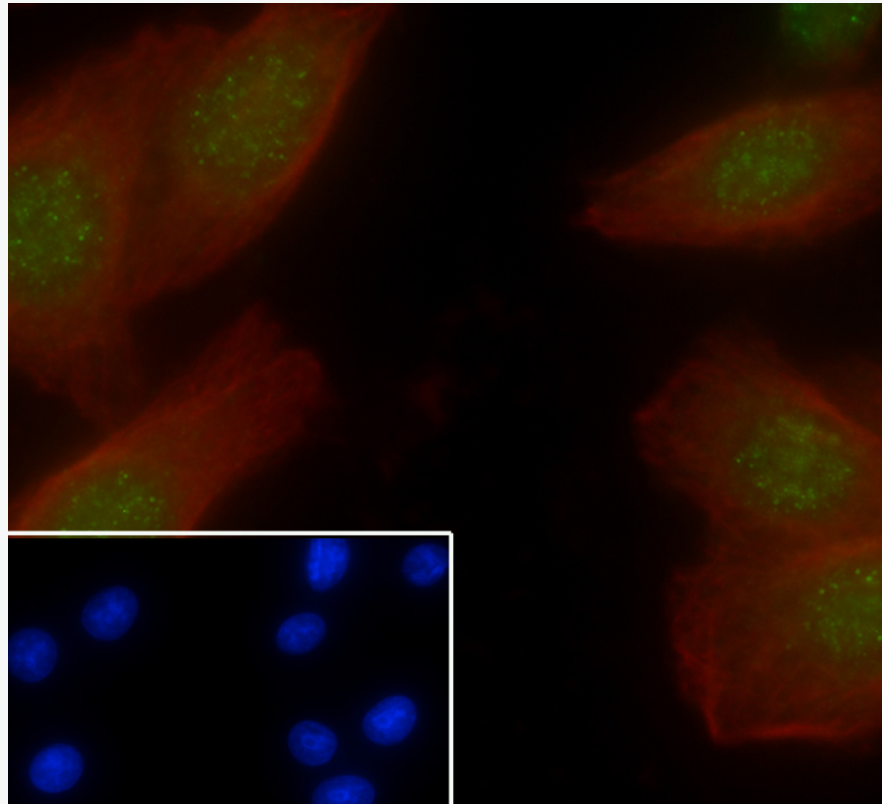
Tissue: Rat colon Section type: Formalin fixed & Paraffin -embedded section Retrieval method: High temperature and high pressure Retrieval buffer: Tris/EDTA buffer, pH 9.0 Primary ab dilution: 1:100 Primary ab incubation condition: 1 hour at room temperature Secondary ab: SP Kit(Rabbit) (sp-0023) Counter stain: Hematoxylin (Blue) Comment: Color brown is the positive signal for SLM-60612R



Tissue: Human colon Section type: Formalin fixed & Paraffin -embedded section  
Retrieval method: High temperature and high pressure Retrieval buffer: Tris/EDTA  
buffer, pH 9.0 Primary ab dilution: 1:500 Primary ab incubation condition: 1 hour at  
room temperature Secondary ab: SP Kit(Rabbit) (sp-0023) Counter stain: Hematoxylin  
(Blue) Comment: Color brown is the positive signal for SLM-60612R



Tissue: Mouse colon Section type: Formalin fixed & Paraffin -embedded section  
Retrieval method: High temperature and high pressure Retrieval buffer: Tris/EDTA  
buffer, pH 9.0 Primary ab dilution: 1:100 Primary ab incubation condition: 1 hour at  
room temperature Secondary ab: SP Kit(Rabbit) (sp-0023) Counter stain: Hematoxylin  
(Blue) Comment: Color brown is the positive signal for SLM-60612R

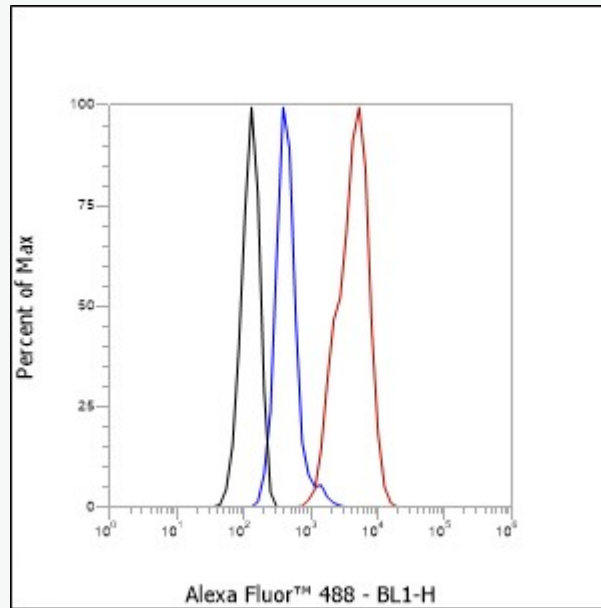


Cell line: SW480 Fixative: 100% Ice-cold methanol Permeabilization: 0.1%

TritonX-100 Primary ab dilution: 1:200 Primary incubation condition: 4°C overnight

Secondary ab: Goat Anti-Rabbit IgG Nuclear counter stain: DAPI (Blue) Counter stain:

Tubulin (Red) Comment: Color green is the positive signal for SLM-60612R



Cell line: HT-29 Fixative: 4% Paraformaldehyde Permeabilization: 90% methanol  
Primary ab dilution: 1:100 Secondary ab: Goat anti Rabbit IgG Unlabelled control: The cell without incubation with primary antibody and secondary antibody (Black line).  
Isotype control: Rabbit monoclonal IgG (Blue line). Comment: Line red is the positive signal for SLM-60612R