

Rabbit Anti-CCR6 antibody

SLM-60607R

Product Name	CCR6
Chinese Name	细胞表面 Chemokine 受体 6 (CD196) 抗体
Alias	CCR6; C-C chemokine receptor type 6; BN 1; BN1; C C chemokine receptor type 6; C C CKR 6; CC chemokine receptor type 6; CC CKR 6; CC R6; CCCR6; CCR 6; CD 196; CD196; CD196 antigen; Chemokine (C C motif) receptor 6; Chemokine (C C) receptor 6; Chemokine (CC motif) receptor 6; Chemokine (CC) receptor 6; Chemokine receptor 6; Chemokine receptor like 3; CKR 6; CKR L3; CKRL3; CMKBR 6; CMKBR6; DCR 2; DCR2; DRY 6; DRY6; G protein coupled receptor 29; GPR 29; GPR CY4; GPR29; GPRCY 4; GPRCY4; LARC receptor; Seven transmembrane receptor lymphocyte 22; STRL 22; STRL22; CCR6_HUMAN.
Immunogen Species	Rabbit
Clonality	Monoclonal
Clone NO.	H8B8
React Species	Human, WB=1:2000-10000
Applications	not yet tested in other applications. optimal dilutions/concentrations should be determined by the end user.
Theoretical molecular weight	41kDa
Cellular localization	The cell membrane
Form	Liquid
Concentration	1mg/ml
immunogen	KLH conjugated synthetic peptide derived from human CCR6
Lsotype	IgG
Purification	Affinity purified by Protein A
Buffer Solution	1M TBS(pH7.4) with 1% BSA, 3% Proclin300 and 50% Glycerol.
Storage	Shipped at 4°C. Store at -20 °C for one year. Avoid repeated freeze/thaw cycles.
Attention	This product as supplied is intended for research use only, not for use in

human, therapeutic or diagnostic applications.

PubMed

[PubMed](#)

This gene encodes a member of the beta chemokine receptor family, which is predicted to be a seven transmembrane protein similar to G protein-coupled receptors. The gene is preferentially expressed by immature dendritic cells and memory T cells. The ligand of this receptor is macrophage inflammatory protein 3 alpha (MIP-3 alpha). This receptor has been shown to be important for B-lineage maturation and antigen-driven B-cell differentiation, and it may regulate the migration and recruitment of dendritic and T cells during inflammatory and immunological responses. Alternatively spliced transcript variants that encode the same protein have been described for this gene. [provided by RefSeq, Jul 2008]

Function:

Receptor for a C-C type chemokine. Binds to MIP-3-alpha/LARC and subsequently transduces a signal by increasing the intracellular calcium ions level.

Subcellular Location:

Cell membrane; Multi-pass membrane protein.

Tissue Specificity:

Product Detail

Spleen, lymph nodes, appendix, and fetal liver. Expressed in lymphocytes, T-cells and B-cells but not in natural killer cells, monocytes or granulocytes.

Similarity:

Belongs to the G-protein coupled receptor 1 family.

SWISS:

P51684

Gene ID:

1235

Database links:

[Entrez Gene: 1235](#) Human

[Entrez Gene: 12458](#) Mouse

[Entrez Gene: 308163](#) Rat

[Omim: 601835](#) Human

[SwissProt: P51684](#) Human

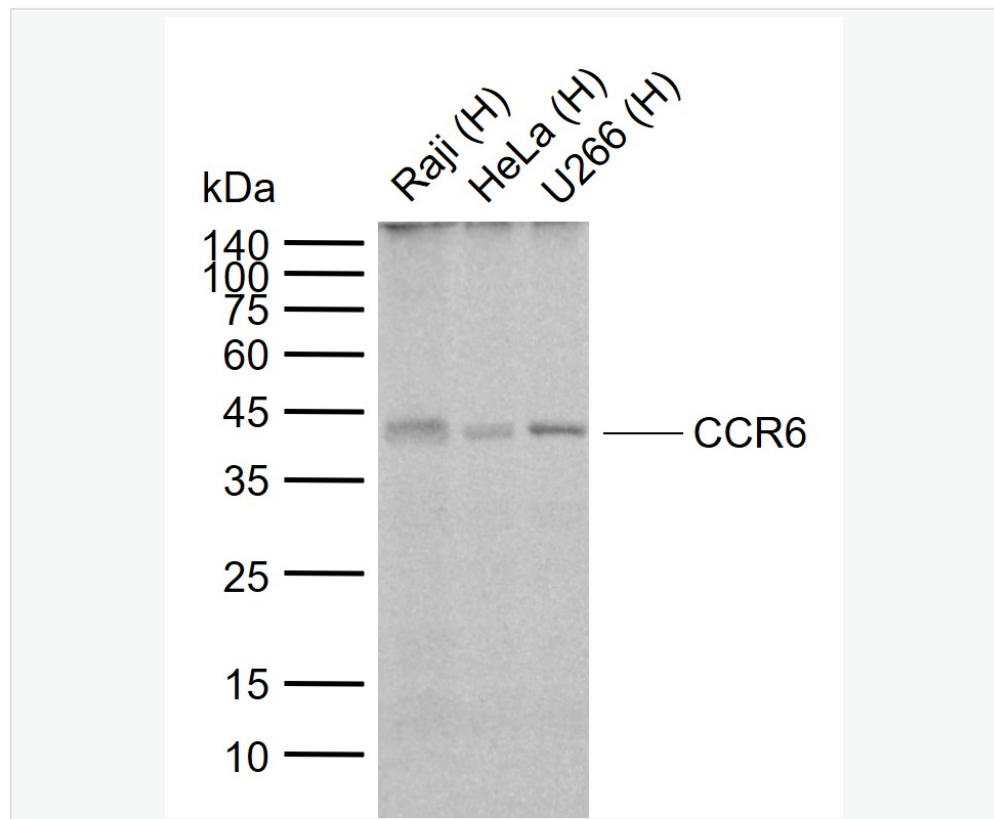
[SwissProt: O54689](#) Mouse

[Unigene: 46468](#) Human

[Unigene: 8007](#) Mouse

CCR6/CD196 也是是属于 G protein-coupled receptor 一家族成员，参与调节白细胞的迁移和活性作用，是 The cell membrane 蛋白。

Product Picture



Sample:

Lane 1: Human Raji cell lysates

Lane 2: Human HeLa cell lysates

Lane 3: Human U266 cell lysates

Primary: Anti-CCR6 (SLM-60607R) at 1/50000 dilution

Secondary: IRDye800CW Goat Anti-Rabbit IgG at 1/20000 dilution



SunLong Biotech Co.,LTD

Tel: 0086-571-56623320 Fax:0086-571-56623318

E-mail:sales@sunlongbiotech.com

www.sunlongbiotech.com

Predicted band size: 41 kDa

Observed band size: 42 kDa