

Rabbit Anti-MCM3 antibody

SLM-60606R

Product Name MCM3

Chinese Name

Immunogen Species Rabbit

Clonality Monoclonal

Clone NO. F4D5

React Species Human,Mouse,Rat

WB=1:500-2000,IHC-P=1:50-200,IHC-F=1:50-200,IF=1:50-200,Flow-Cyt=1:50-100,ICC/IF=1
(Paraffin sections need antigen repair)

Applications

not yet tested in other applications.

optimal dilutions/concentrations should be determined by the end user.

Cellular localization The nucleus

Form Liquid

Concentration 1mg/ml

Lsotype IgG

Purification Affinity purified by Protein A

Buffer Solution 1M TBS(pH7.4) with 1% BSA, 3% Proclin300 and 50% Glycerol.

Storage Shipped at 4°C. Store at -20 °C for one year. Avoid repeated freeze/thaw cycles.

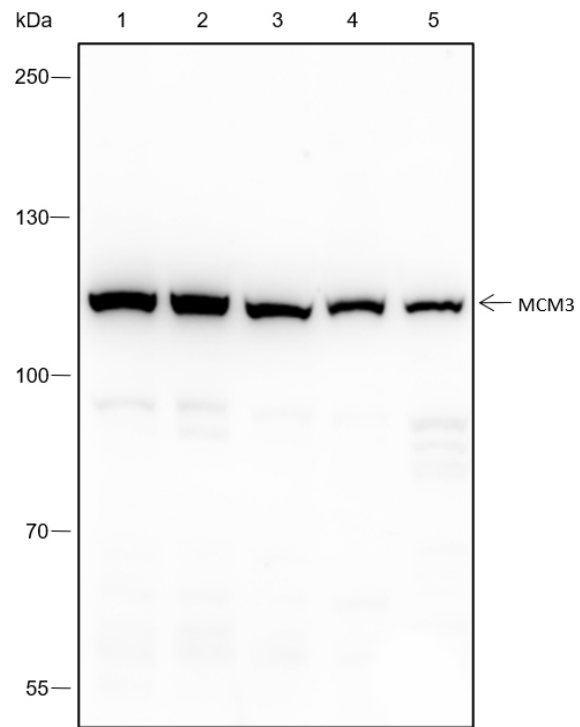
Attention This product as supplied is intended for research use only, not for use in human, therapeutic or diagnostic applications.

PubMed [PubMed](#)

Product Detail

充当 MCM2-7 复合物 (MCM 复合物) 的组成部分, MCM2-7 复合物是复制解旋酶, 对于细胞中的“细胞周期” DNA 复制起始和延伸而言是必不可少的。MCM2-7 环中的活性 ATPase 是通过两个相邻亚基的相互作用表面形成的, 因此相对于相邻的 Walker A 盒的 ATP 结合反式提供了一个保守的精氨酸手指基序的关键结构亚基。但是, 六个 ATPase 活性位点可杂的解旋酶活性有不同的贡献, 是 DNA 复制和细胞增殖所必需。

**Product
Picture**



Blocking buffer: 5% NFDM/TBST

Primary ab dilution: 1:2000

Primary ab incubation condition: 2 hours at room temperature

Secondary ab: Goat Anti-Rabbit IgG H&L (HRP)

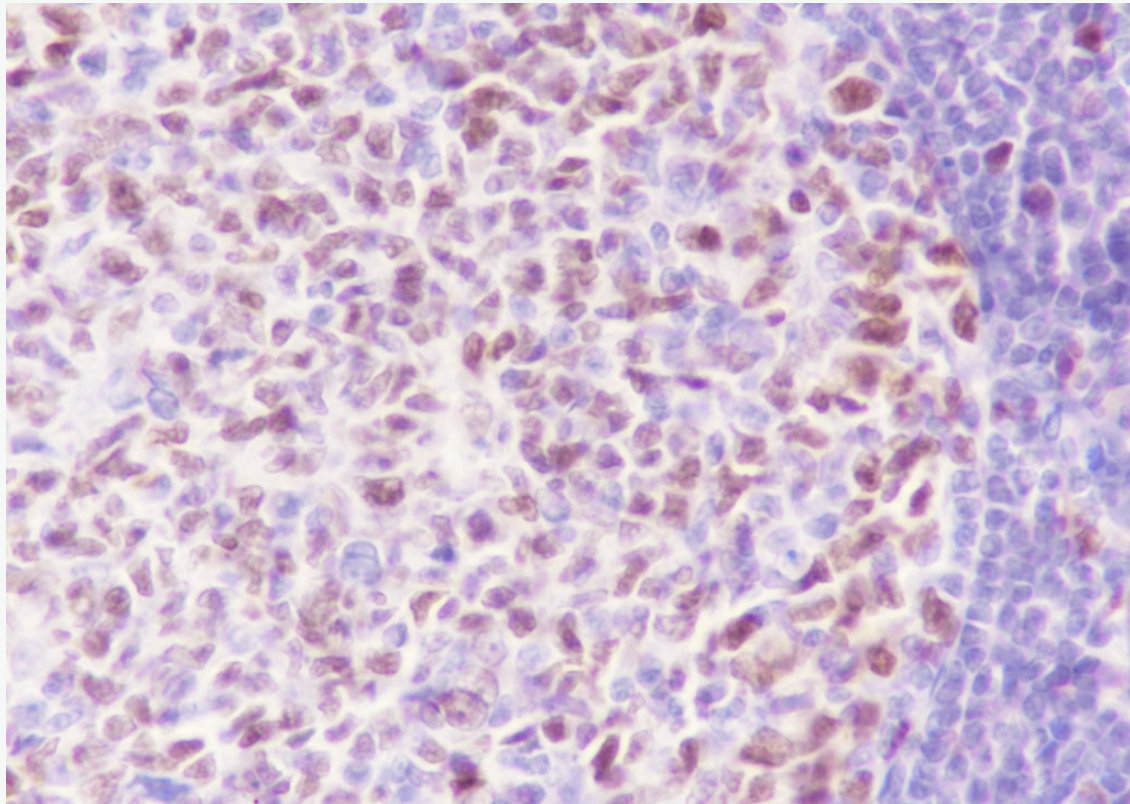
Lysate: 1: HeLa, 2: K562, 3: HepG2, 4: PC-12, 5: NIH-3T3

Protein loading quantity: 20 μ g

Exposure time: 30 s

Predicted MW: 91 kDa

Observed MW: 100 kDa



Tissue: Human tonsil

Section type: Formalin fixed & Paraffin -embedded section

Retrieval method: High temperature and high pressure

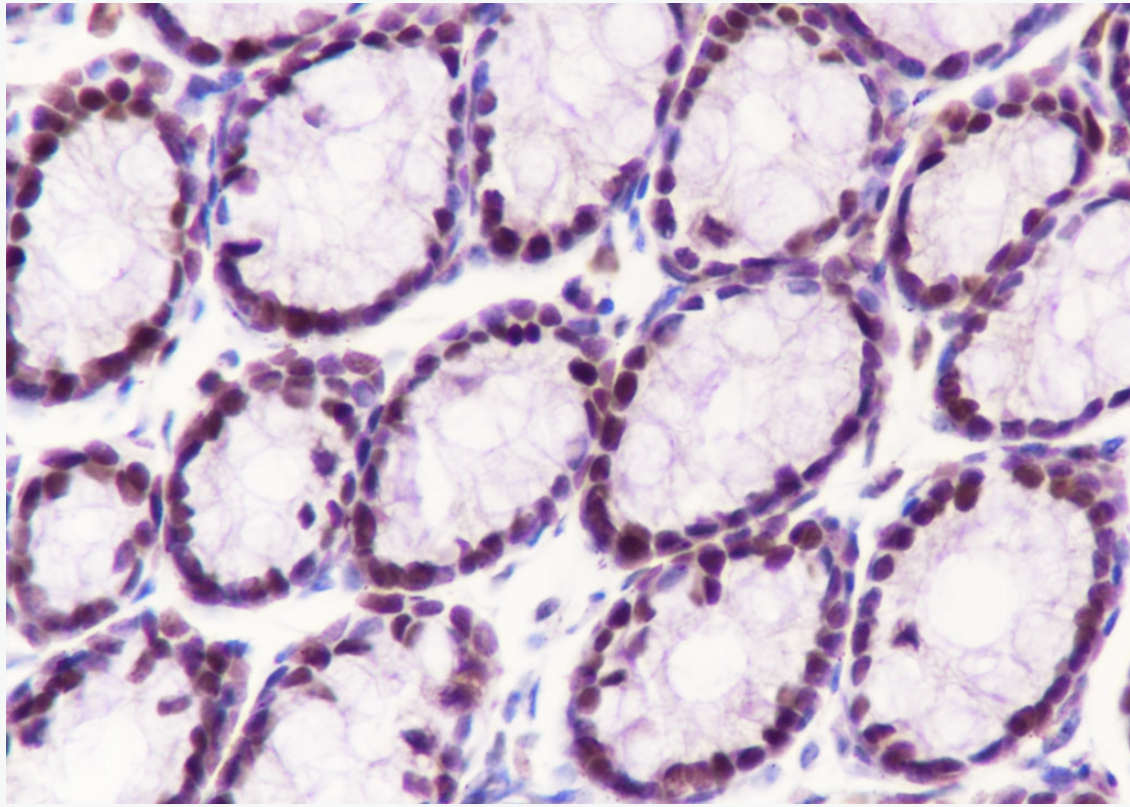
Retrieval buffer: Tris/EDTA buffer, pH 9.0 Primary ab dilution: 1:1000

Primary ab incubation condition: 1 hour at room temperature

Secondary ab: SP Kit(Rabbit) (sp-0023)

Counter stain: Hematoxylin (Blue)

Comment: Color brown is the positive signal for SLM-60606R



Tissue: Human colon

Section type: Formalin fixed & Paraffin -embedded section

Retrieval method: High temperature and high pressure

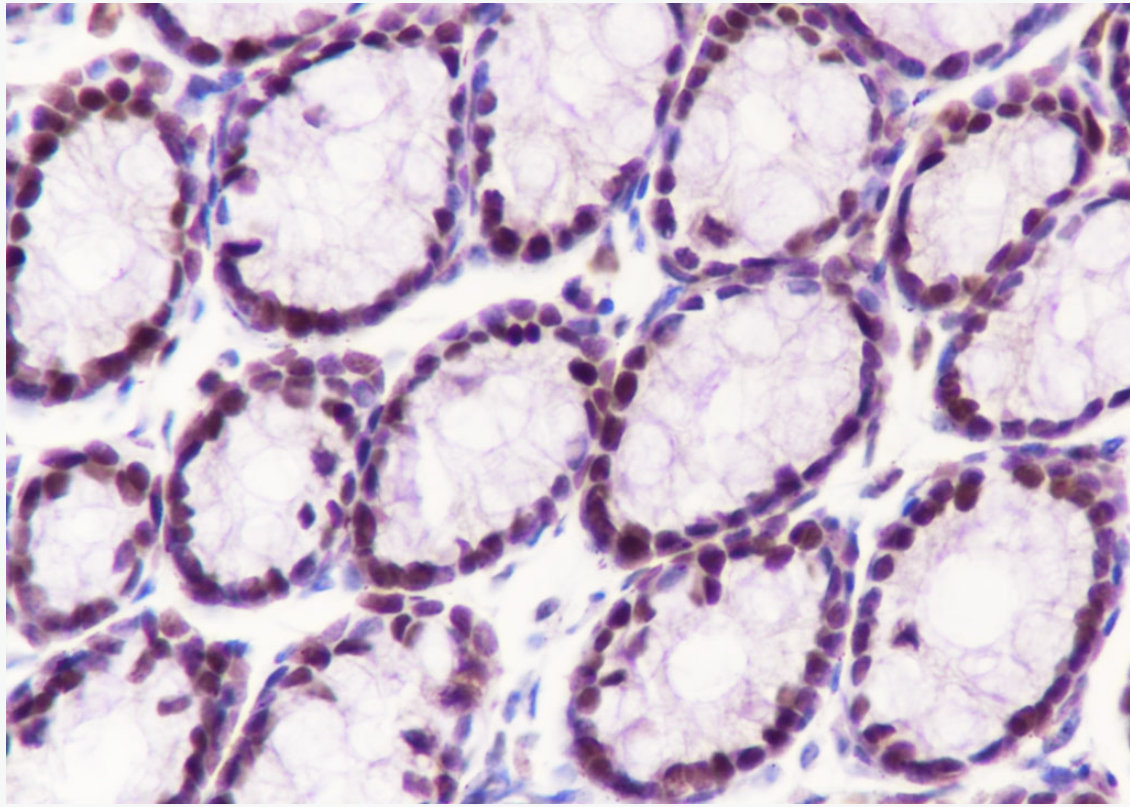
Retrieval buffer: Tris/EDTA buffer, pH 9.0 Primary ab dilution: 1:1000

Primary ab incubation condition: 1 hour at room temperature

Secondary ab: SP Kit(Rabbit) (sp-0023)

Counter stain: Hematoxylin (Blue)

Comment: Color brown is the positive signal for SLM-60606R



Tissue: Mouse colon

Section type: Formalin fixed & Paraffin -embedded section

Retrieval method: High temperature and high pressure

Retrieval buffer: Tris/EDTA buffer, pH 9.0 Primary ab dilution: 1:1000

Primary ab incubation condition: 1 hour at room temperature

Secondary ab: SP Kit(Rabbit) (sp-0023)

Counter stain: Hematoxylin (Blue)

Comment: Color brown is the positive signal for SLM-60606R