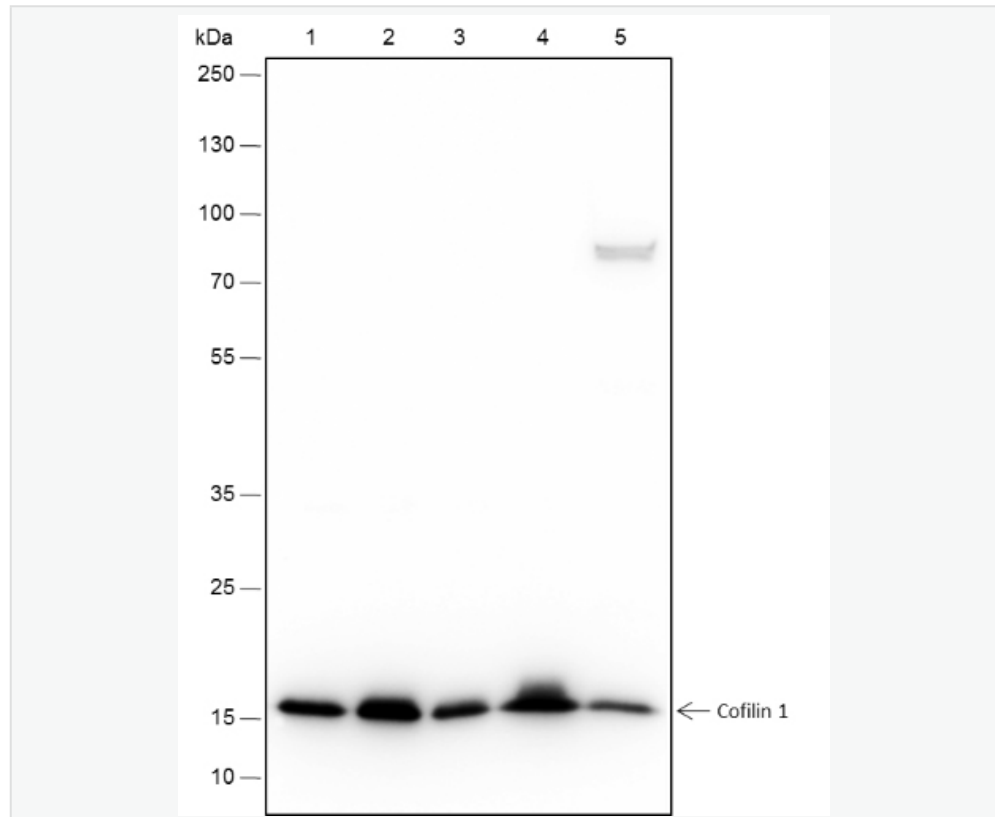


Rabbit Anti-Cofilin 1 antibody

SLM-60604R

Product Name	Cofilin 1
Chinese Name	
Immunogen Species	Rabbit
Clonality	Monoclonal
Clone NO.	C5E4
React Species	Human(predicted:Mouse,Rat) WB=1:500-2000,Flow-Cyt=1:20-100
Applications	not yet tested in other applications. optimal dilutions/concentrations should be determined by the end user.
Cellular localization	The cell membrane
Form	Liquid
Concentration	1mg/ml
Lsotype	IgG
Purification	Affinity purified by Protein A
Buffer Solution	1M TBS(pH7.4) with 1% BSA, 3% Proclin300 and 50% Glycerol.
Storage	Shipped at 4°C. Store at -20 °C for one year. Avoid repeated freeze/thaw cycles.
Attention	This product as supplied is intended for research use only, not for use in human, therapeutic or diagnostic applications.
PubMed	PubMed
Product Detail	与 F-肌动蛋白结合并表现出 pH 敏感的 F-肌动蛋白解聚活性。与皮质下母体复合体 (SCMC) 结合, 通过肌动蛋白动力学的调节, 对合子在胚胎细胞分裂过程中发挥重要作用。在 epithelial cells 的细胞形态和 Cytoskeleton 组织的调节中起作用。

Product Picture



Blocking buffer: 5% NFDN/TBST

Primary ab dilution: 1:2000

Primary ab incubation condition: 2 hours at room temperature

Secondary ab: Goat Anti-Rabbit IgG H&L (HRP)

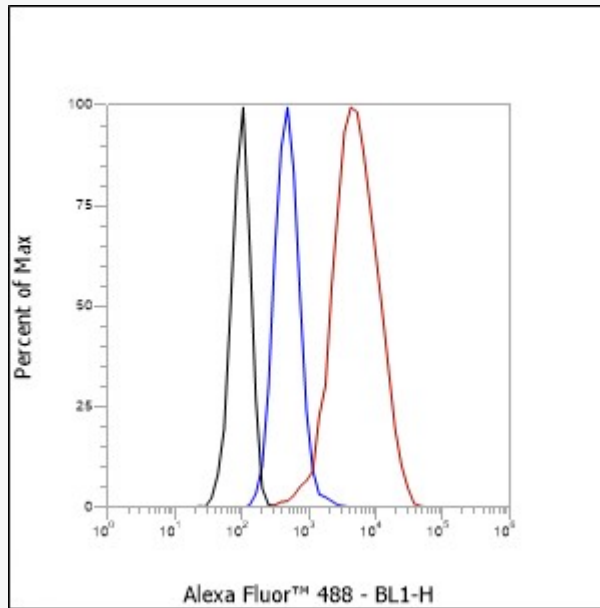
Lysate: 1: HeLa, 2: MCF-7, 3: 293T, 4: C6,5: NIH/3T3

Protein loading quantity: 20 μ g

Exposure time: 3 s

Predicted MW: 19 kDa

Observed MW: 19 kDa



Cell line: HeLa

Fixation: 4% Paraformaldehyde

Permeabilization: 90% Methanol

Primary Ab dilution: 1:100

Secondary Ab: Goat Anti-Rabbit IgG

Unlabelled control: The cell without incubation with primary antibody and secondary antibody (Black line).

Isotype control: Rabbit monoclonal IgG (Blue line).

Comment: Line red is the positive signal for SLM-60604R