

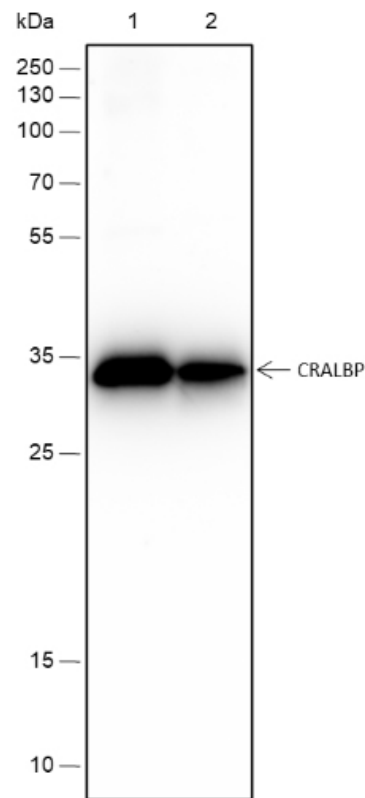


Rabbit Anti-CRALBP antibody

SLM-60602R

Product Name	CRALBP
Chinese Name	
Immunogen Species	Rabbit
Clonality	Monoclonal
Clone NO.	F6F8
React Species	Mouse(predicted:Rat) WB=1:500-1000,IHC-P=1:100-500,IHC-F=1:100-500,IF=1:100-500 (Paraffin sections need antigen repair)
Applications	not yet tested in other applications. optimal dilutions/concentrations should be determined by the end user.
Cellular localization	The cell membrane
Form	Liquid
Concentration	1mg/ml
Lsotype	IgG
Purification	Affinity purified by Protein A
Buffer Solution	1M TBS(pH7.4) with 1% BSA, 3% Proclin300 and 50% Glycerol.
Storage	Shipped at 4°C. Store at -20 °C for one year. Avoid repeated freeze/thaw cycles.
Attention	This product as supplied is intended for research use only, not for use in human, therapeutic or diagnostic applications.
PubMed	PubMed
Product Detail	可溶性维甲酸载体对视杆细胞和视锥细胞的正常功能至关重要。参与从视紫红质光环的非活性 11-反式产物中再生活性 11-顺式视黄醇和 11-顺式视黄醛，以及从 11-反式代谢前体从头合成这些视黄醇。视黄酸在感光细胞和邻近色素 epithelial cells 之间的循环被称为“视觉循环”。

**Product
Picture**



Blocking buffer: 5% NFDN/TBST

Primary ab dilution: 1:1000

Primary ab incubation condition: 2 hours at room temperature

Secondary ab: Goat Anti-Rabbit IgG H&L (HRP)

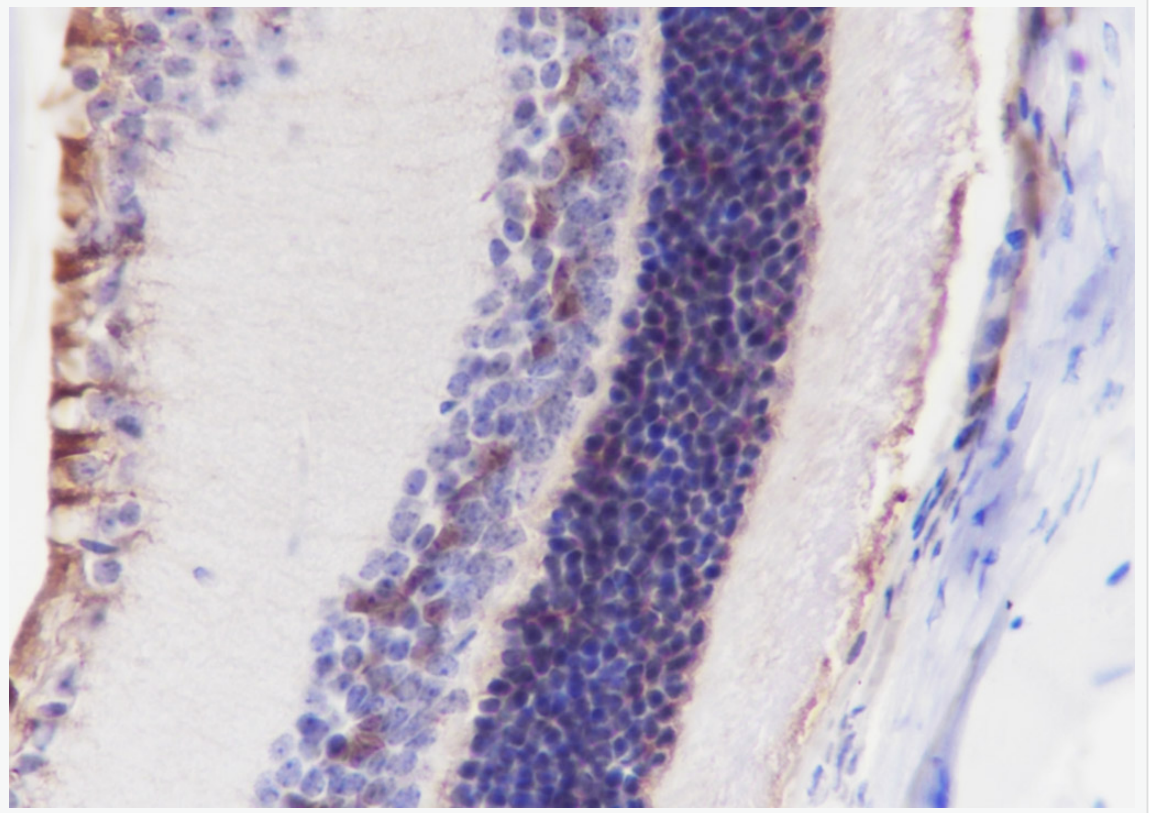
Lysate: 1: Mouse eye, 2: Rat eye

Protein loading quantity: 20 μ g

Exposure time: 60 s

Predicted MW: 36 kDa

Observed MW: 36 kDa



Tissue: Mouse retina

Section type: Formalin fixed & Paraffin -embedded section

Retrieval method: High temperature and high pressure

Retrieval buffer: Tris/EDTA buffer, pH 9.0 Primary ab dilution: 1:1000

Primary ab incubation condition: 1 hour at room temperature

Secondary ab: SP Kit(Rabbit) (sp-0023)

Counter stain: Hematoxylin (Blue)

Comment: Color brown is the positive signal for SLM-60602R