

Rabbit Anti-Laminin B1 antibody

SLM-60601R

Product Name Laminin B1

Chinese Name

Immunogen Species Rabbit

Clonality Monoclonal

Clone NO. H3F4

React Species Human,Mouse,Rat

Applications Flow-Cyt=1:50-100,WB=1:500-2000 (Paraffin sections need antigen repair)
not yet tested in other applications.
optimal dilutions/concentrations should be determined by the end user.

Cellular localization cytoplasmic

Form Liquid

Concentration 1mg/ml

Lsotype IgG

Purification Affinity purified by Protein A

Buffer Solution 1M TBS(pH7.4) with 1% BSA, 3% Proclin300 and 50% Glycerol.

Storage Shipped at 4°C. Store at -20 °C for one year. Avoid repeated freeze/thaw cycles.

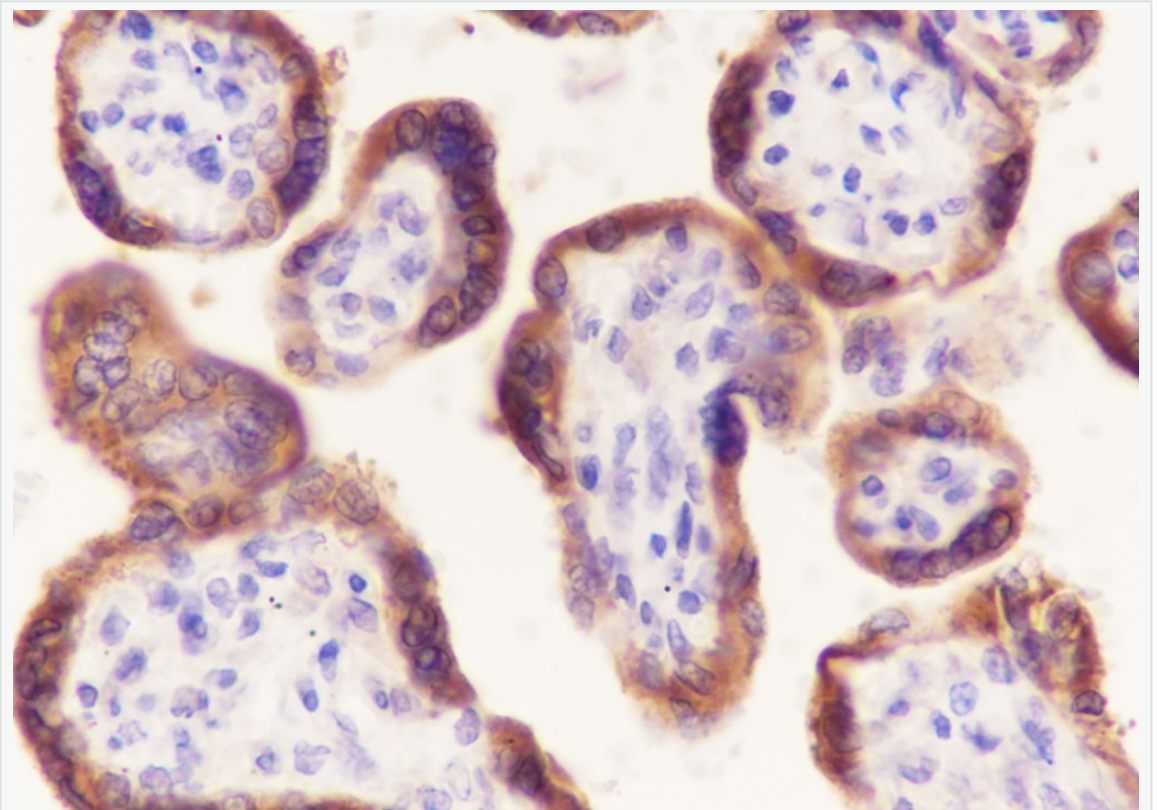
Attention This product as supplied is intended for research use only, not for use in human, therapeutic or diagnostic applications.

PubMed [PubMed](#)

Product Detail

laminin 通过高亲和力受体与细胞结合，在胚胎发育过程中通过与其他 Extracellular matrix 成分相互作用，介导细胞附着、迁移和组织到组织中。参与大脑皮层层状结构的组织。它可能是基底膜/胶质细胞界限的完整性所必需的，基底膜/胶质细胞界限是放射状胶质细胞末端的锚定点，也是迁移神经元的物理屏障。放射状胶质细胞在大脑皮质发育中起着中心作用，它们既是大脑皮质的增殖单位，又是神经元向软脑膜表面迁移的支架。

**Product
Picture**



Tissue: Human placenta

Section type: Formalin fixed & Paraffin -embedded section

Retrieval method: High temperature and high pressure

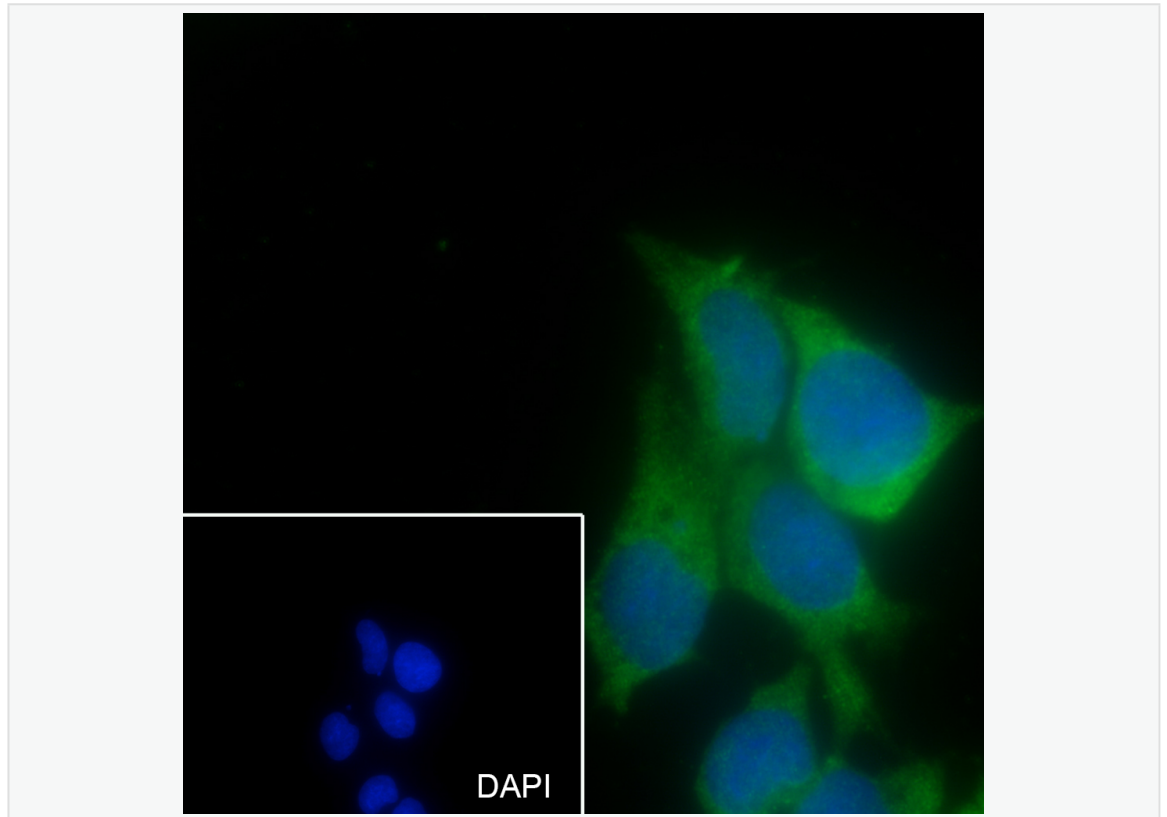
Retrieval buffer: Tris/EDTA buffer, pH 9.0 Primary ab dilution: 1:100

Primary ab incubation condition: 1 hour at room temperature

Secondary ab: SP Kit(Rabbit) (sp-0023)

Counter stain: Hematoxylin (Blue)

Comment: Color brown is the positive signal for SLM-60601R



Cell line: HepG2

Fixative: 4% Paraformaldehyde

Permeabilization: 0.1% TritonX-100

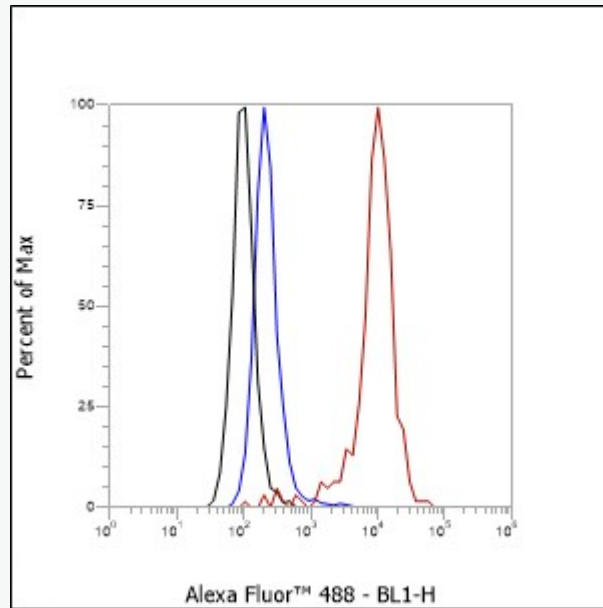
Primary ab dilution: 1:50

Primary incubation condition: 4°C overnight

Secondary ab: Goat Anti-Rabbit IgG

Nuclear counter stain: DAPI (Blue)

Comment: Color green is the positive signal for SLM-60601R



Cell line: A431

Fixative: 4% Paraformaldehyde

Permeabilization: 90% Methanol

Primary ab dilution: 1:100

Secondary ab: Goat anti Rabbit IgG

Unlabelled control: The cell without incubation with primary antibody and secondary antibody (Black line).

Isotype control: Rabbit monoclonal IgG (Blue line).

Comment: Line red is the positive signal for SLM-60601R