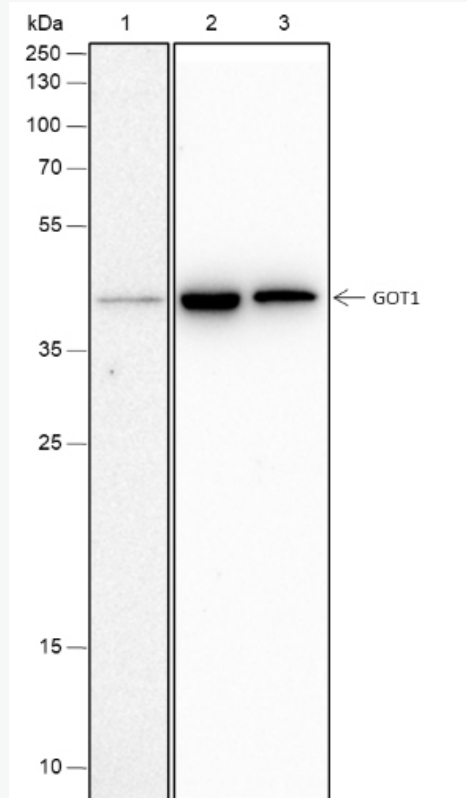


Rabbit Anti-GOT1 antibody

SLM-60599R

| | |
|------------------------------|---|
| Product Name | GOT1 |
| Immunogen Species | Rabbit |
| Clonality | Monoclonal |
| Clone NO. | H4D9 |
| React Species | Human,Rat(predicted:Mouse) WB=1:500-1000,IHC-P=1:100-500,IHC-F=1:100-500,IF=1:100-500 (Paraffin sections need antigen repair) |
| Applications | not yet tested in other applications. optimal dilutions/concentrations should be determined by the end user. |
| Cellular localization | The cell membrane |
| Form | Liquid |
| Concentration | 1mg/ml |
| Lsotype | IgG |
| Purification | Affinity purified by Protein A |
| Buffer Solution | 1M TBS(pH7.4) with 1% BSA, 3% Proclin300 and 50% Glycerol. |
| Storage | Shipped at 4°C. Store at -20 °C for one year. Avoid repeated freeze/thaw cycles. |
| Attention | This product as supplied is intended for research use only, not for use in human, therapeutic or diagnostic applications. |
| PubMed | PubMed |
| Product Detail | 从 L-天冬氨酸或 L-半胱氨酸生物合成 L-谷氨酸。谷氨酸水平的重要调节者，谷氨酸是脊椎动物中枢神经系统的主要兴奋性神经递质。在脑神经保护中起到谷氨酸清除剂的作用。天门冬氨酸氨基转移酶活性参与发育过程中肝脏葡萄糖的合成和脂肪细胞的新生。以 L-半胱氨酸为底物，调节巯基丙酮酸的水平，巯基丙酮酸是硫化氢的重要来源。巯基丙酮酸通过 3-巯基丙酮酸硫转移酶（3MST）的作用转化为 H ₂ S。硫化氢是脑内重要的突触调节剂和神经保护剂。 |

**Product
Picture**



Blocking buffer: 5% NFDm/TBST

Primary ab dilution: 1:1000

Primary ab incubation condition: 2 hours at room temperature

Secondary ab: Goat Anti-Rabbit IgG H&L (HRP)

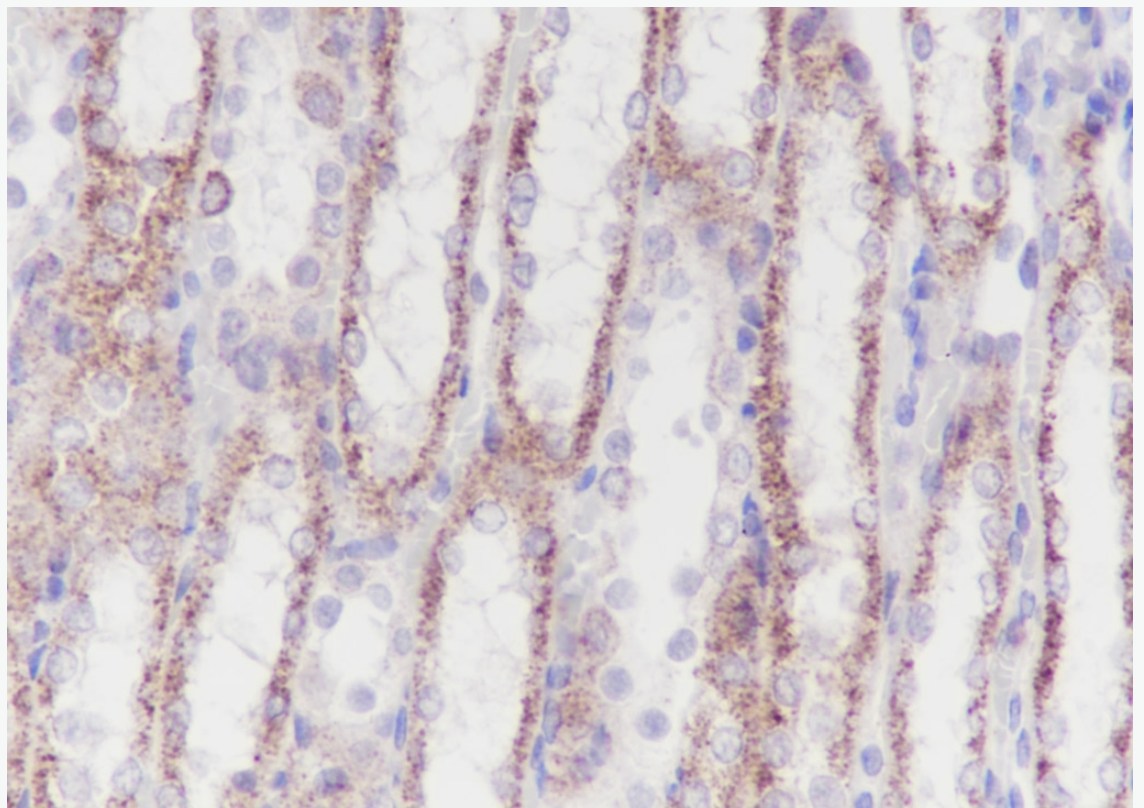
Lysate: 1: HeLa, 2: Mouse heart, 3: Rat heart

Protein loading quantity: 20 μ g

Exposure time: 60 s

Predicted MW: 46 kDa

Observed MW: 46 kDa



Tissue: Rat kidney

Section type: Formalin fixed & Paraffin -embedded section

Retrieval method: High temperature and high pressure

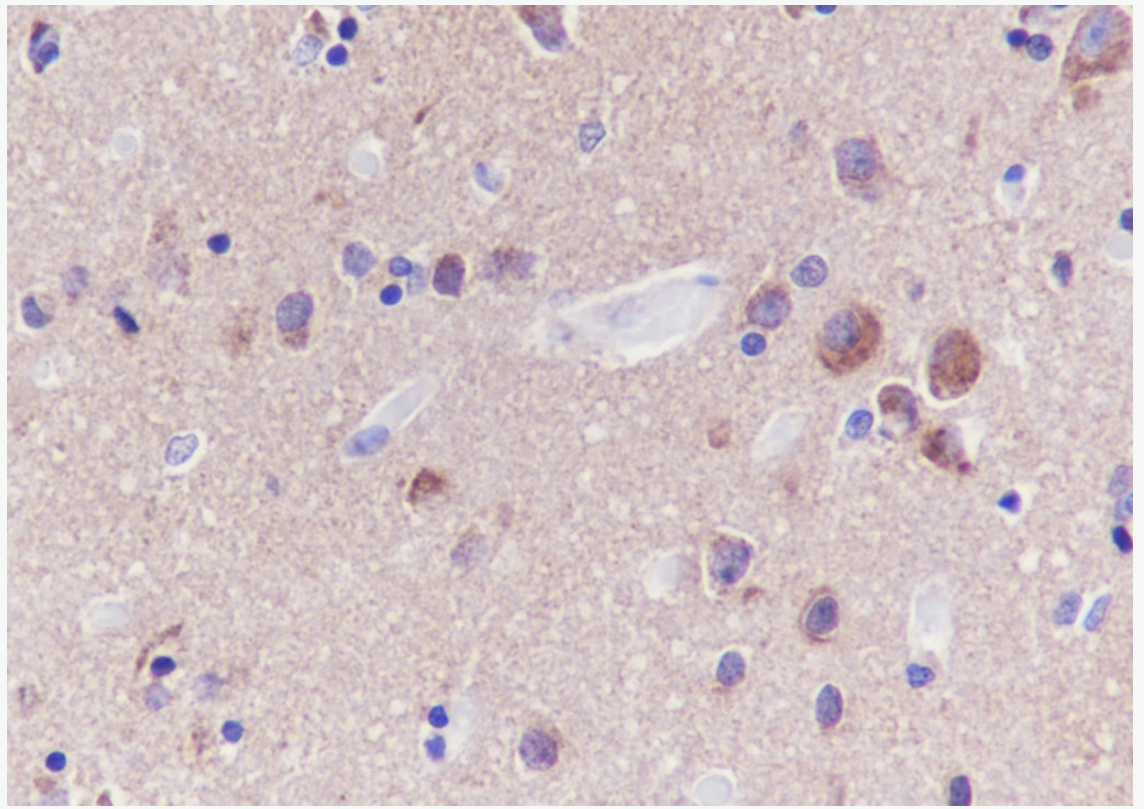
Retrieval buffer: Tris/EDTA buffer, pH 9.0 Primary ab dilution: 1:100

Primary ab incubation condition: 1 hour at room temperature

Secondary ab: SP Kit(Rabbit) (sp-0023)

Counter stain: Hematoxylin (Blue)

Comment: Color brown is the positive signal for SLM-60599R



Tissue: Human cerebrum

Section type: Formalin fixed & Paraffin -embedded section

Retrieval method: High temperature and high pressure

Retrieval buffer: Tris/EDTA buffer, pH 9.0 Primary ab dilution: 1:1000

Primary ab incubation condition: 1 hour at room temperature

Secondary ab: SP Kit(Rabbit) (sp-0023)

Counter stain: Hematoxylin (Blue)

Comment: Color brown is the positive signal for SLM-60599R