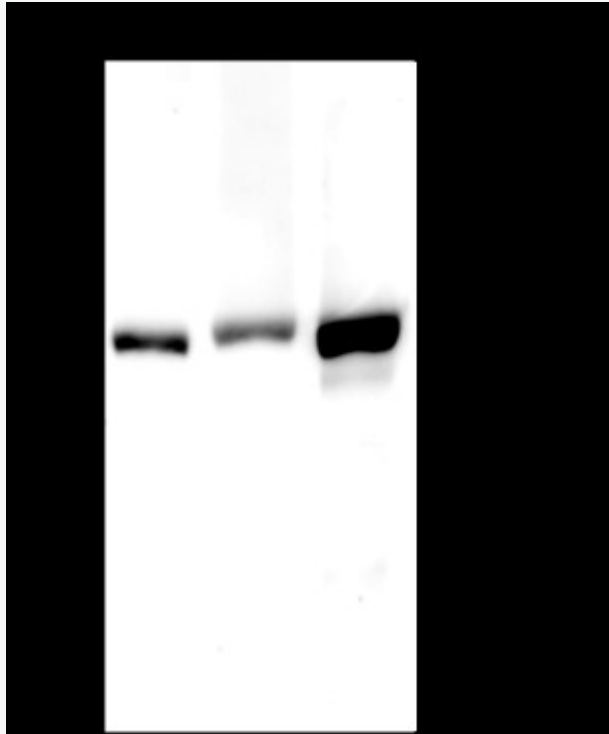


Rabbit Anti-CPS1 antibody

SLM-60596R

Product Name	CPS1
Chinese Name	
Immunogen Species	Rabbit
Clonality	Monoclonal
Clone NO.	C6G2
React Species	Human(predicted:Mouse,Rat) WB=1:500-1000,IHC-P=1:100-500,IHC-F=1:100-500,IF=1:100-500 (Paraffin sections need antigen repair)
Applications	not yet tested in other applications. optimal dilutions/concentrations should be determined by the end user.
Cellular localization	The nucleus The cell membrane
Form	Liquid
Concentration	1mg/ml
Lsotype	IgG
Purification	Affinity purified by Protein A
Buffer Solution	1M TBS(pH7.4) with 1% BSA, 3% Proclin300 and 50% Glycerol.
Storage	Shipped at 4°C. Store at -20 °C for one year. Avoid repeated freeze/thaw cycles.
Attention	This product as supplied is intended for research use only, not for use in human, therapeutic or diagnostic applications.
PubMed	PubMed
Product Detail	参与了动物的输尿管的尿素循环, 其中酶在细胞中去除过量氨中起着重要作用。

**Product
Picture**



Blocking buffer: 5% NFDM/TBST

Primary ab dilution: 1:1000

Primary ab incubation condition: 2 hours at room temperature

Secondary ab: Goat Anti-Rabbit IgG H&L (HRP)

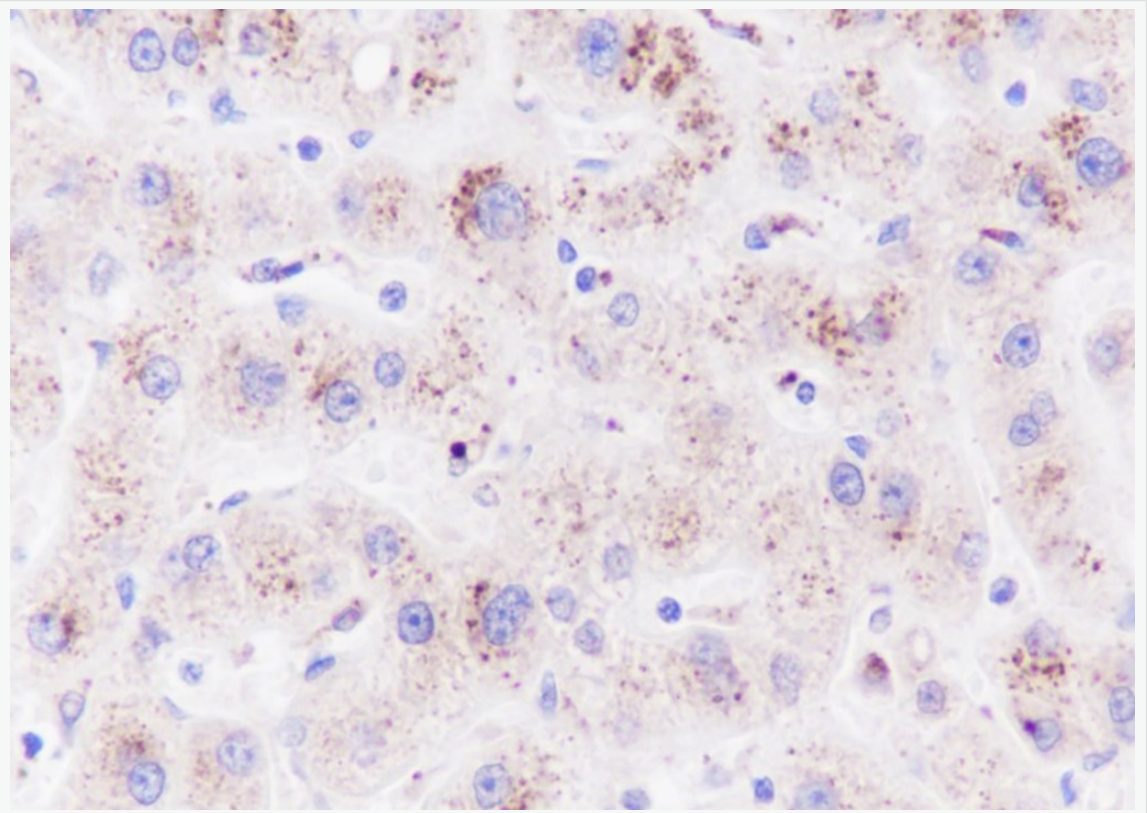
Lysate: 1: Human liver, 2: Rat liver, 3: Mouse liver

Protein loading quantity: 20 μ g

Exposure time: 60 s

Predicted MW: 165 kDa

Observed MW: 165 kDa



Tissue: Human liver cancer

Section type: Formalin fixed & Paraffin -embedded section

Retrieval method: High temperature and high pressure

Retrieval buffer: Tris/EDTA buffer, pH 9.0 Primary ab dilution: 1:100

Primary ab incubation condition: 1 hour at room temperature

Secondary ab: SP Kit(Rabbit) (sp-0023)

Counter stain: Hematoxylin (Blue)

Comment: Color brown is the positive signal for SLM-60596R