



Rabbit Anti-TFEB antibody

SLM-60595R

Product Name TFEB

Immunogen Species Rabbit

Clonality Monoclonal

Clone NO. D11B4

React Species Human

WB=1:500-1000,IHC-P=1:100-500,IHC-F=1:100-500,ICC/IF=1:100-500,IF=1:100-500,Flow-C
(Paraffin sections need antigen repair)

Applications not yet tested in other applications.
optimal dilutions/concentrations should be determined by the end user.

Cellular localization The nucleus cytoplasmic

Form Liquid

Concentration 1mg/ml

Lsotype IgG

Purification Affinity purified by Protein A

Buffer Solution 1M TBS(pH7.4) with 1% BSA, 3% Proclin300 and 50% Glycerol.

Storage Shipped at 4°C. Store at -20 °C for one year. Avoid repeated freeze/thaw cycles.

Attention This product as supplied is intended for research use only, not for use in human, therapeutic or diagnostic applications.

PubMed [PubMed](#)

Transcription factors of the basic helix-loop-helix zipper (bHLH-ZIP) family contain a basic domain for DNA binding, and HLH and ZIP domains, both used for oligomerization. TFEB was isolated from a B-cell cDNA library using a binding sequence from the adenovirus major late promoter. This transcription factor probably binds to the USF/MLTF site and probably recognizes E-box sequences in the heparin-binding immunoglobulin enhancer.

Product Detail

Function:

Transcription factor that specifically recognizes and binds E-box sequences (3'-CANNTG-5'). E-box DNA-binding requires dimerization with itself or with another MiT/TFE family member such as MITF. In association with TFE3, activates the expression of CD40L in T-cells, thereby playing a role in T-cell activation.

T-cell-dependent antibody responses in activated CD4(+) T-cells and thymus-dependent humoral responses. Specifically recognizes and binds the CLEAR-box sequence (5'-GTCACGTGAC-3') present in the 5' region of many lysosomal genes, leading to activate their expression. It thereby plays a central role in the expression of lysosomal genes. Specifically recognizes the gamma-E3 box, a subset of E-boxes, present in the heavy-chain immunoglobulin enhancer. Plays a role in the signal transduction processes required for the vascularization of the placenta.

Subunit:

Homodimer and heterodimer; with TFE3 or MITF.

Subcellular Location:

Cytoplasm. Nucleus. Note=Mainly present in the cytoplasm. Under aberrant lysosomal storage conditions, it translocates from the cytoplasm to the nucleus.

Post-translational modifications:

Sumoylated; does not affect dimerization with MITF.

Similarity:

Belongs to the MiT/TFE family. Contains 1 basic helix-loop-helix (bHLH) domain.

SWISS:

P19484

Database links:

[Entrez Gene: 7942](#) Human

[Entrez Gene: 510032](#) Cow

[Entrez Gene: 609046](#) Dog

[Entrez Gene: 21425](#) Mouse

[Entrez Gene: 100157940](#) Pig

[Entrez Gene: 316214](#) Rat

[Omim: 600744](#) Human

[SwissProt: P19484](#) Human

[SwissProt: Q9R210](#) Mouse

[Unigene: 485360](#) Human

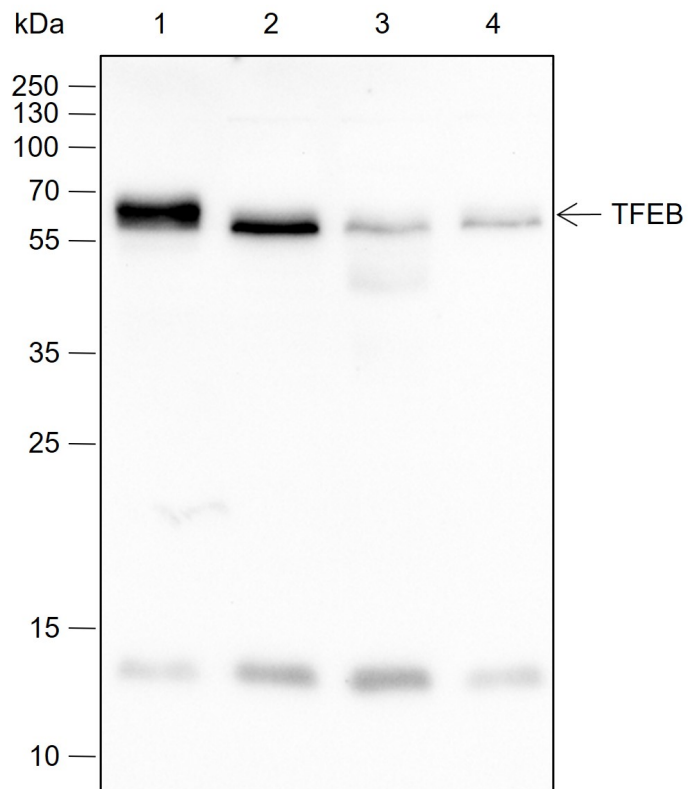
[Unigene: 715310](#) Human

[Unigene: 2305](#) Mouse

[Unigene: 22098](#) Rat

转录因子，充当溶酶体生物发生，自噬，溶酶体胞吐作用，脂质分解代谢，能量代谢和免疫调节剂。特异性识别并结合 E-box 序列 (5'-CANNTG-3')；有效的 DNA 结合需要自 MiT / TFE 家族成员 (如 TFE3 或 MITF) 进行二聚化。通过在 MTOR 的下游起作用而参与氨基酸可用性的响应：在存在营养物的情况下，MTOR 导致的 TFE3 磷酸化促进其胞质保留。在饥饿或溶酶体应激时，抑制 MTOR 会诱导 TFE3 去磷酸化，从而导致核定位和转录

**Product
Picture**



Blocking buffer: 5% NFDN/TBST

Primary ab dilution: 1:1000

Primary ab incubation condition: 2 hours at room temperature

Secondary ab: Goat Anti-Rabbit IgG H&L (HRP)

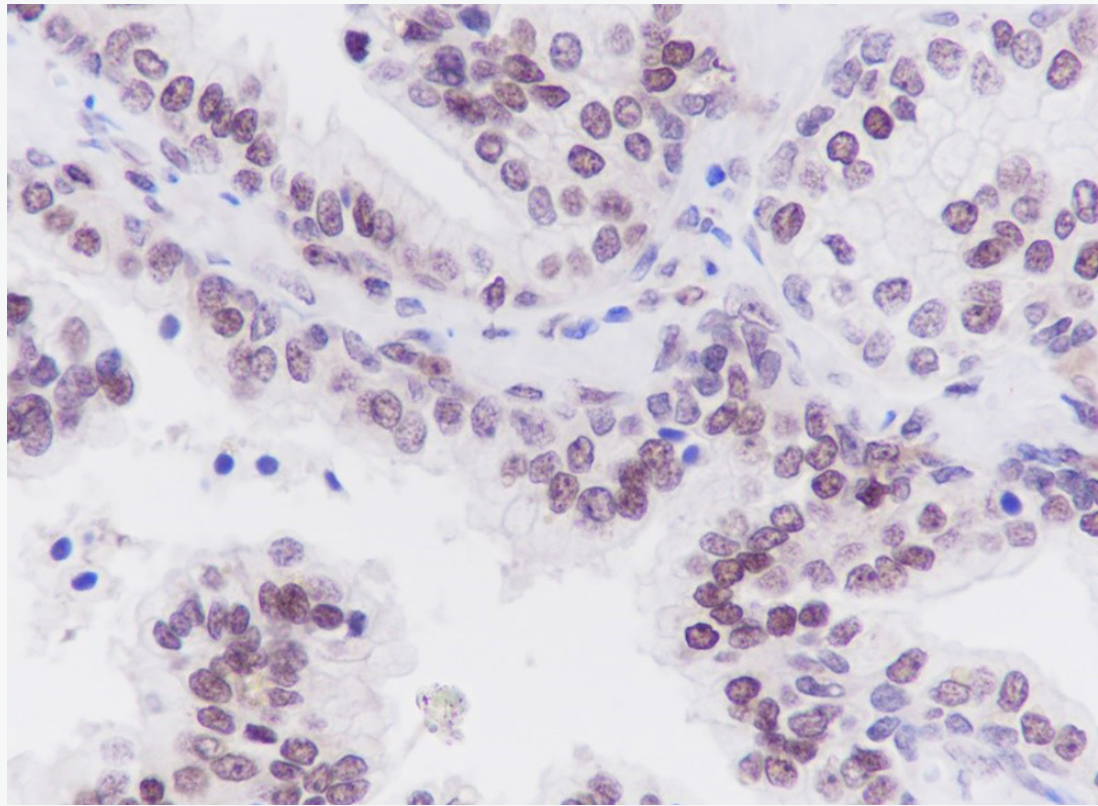
Lysate: 1: Raji, 2: HeLa, 3: HepG2, 4: K562

Protein loading quantity: 20 μ g

Exposure time: 60 s

Predicted MW: 53 kDa

Observed MW: 66 kDa



Tissue: Human prostatic hyperplasia

Section type: Formalin fixed & Paraffin -embedded section

Retrieval method: High temperature and high pressure

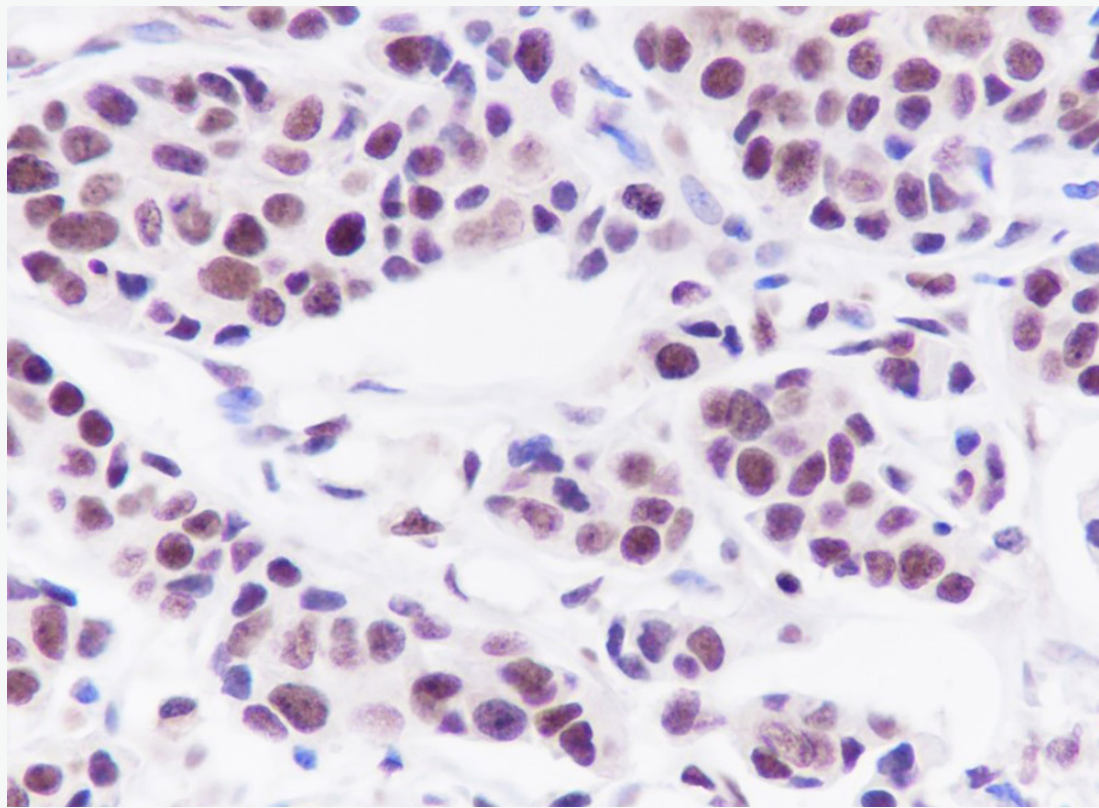
Retrieval buffer: Tris/EDTA buffer, pH 9.0 Primary ab dilution: 1:1000

Primary ab incubation condition: 1 hour at room temperature

Secondary ab: SP Kit(Rabbit) (sp-0023)

Counter stain: Hematoxylin (Blue)

Comment: Color brown is the positive signal for SLM-60595R



Tissue: Human breast cancer

Section type: Formalin fixed & Paraffin -embedded section

Retrieval method: High temperature and high pressure

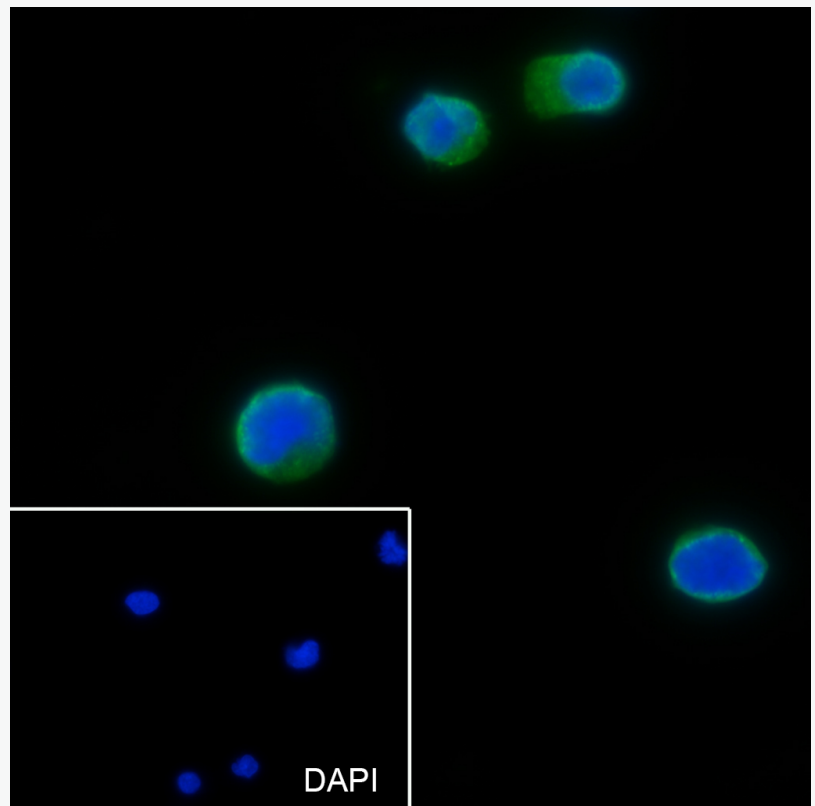
Retrieval buffer: Tris/EDTA buffer, pH 9.0 Primary ab dilution: 1:1000

Primary ab incubation condition: 1 hour at room temperature

Secondary ab: SP Kit(Rabbit) (sp-0023)

Counter stain: Hematoxylin (Blue)

Comment: Color brown is the positive signal for SLM-60595R



Cell line: Raji

Fixative: 4% Paraformaldehyde

Permeabilization: 0.1% TritonX-100

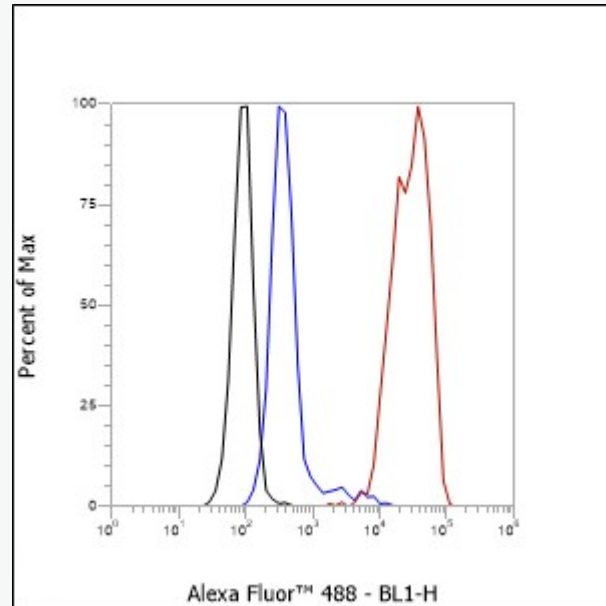
Primary ab dilution: 1:50

Primary incubation condition: 4°C overnight

Secondary ab: Goat Anti-Rabbit IgG

Nuclear counter stain: DAPI (Blue)

Comment: Color green is the positive signal for SLM-60595R



Cell line: Raji

Fixative: 4% Paraformaldehyde

Permeabilization: 90% methanol

Primary ab dilution: 1:100

Secondary ab: Goat anti Rabbit IgG

Unlabelled control: The cell without incubation with primary antibody and secondary antibody (Blue line).

Isotype control: Rabbit monoclonal IgG (Blue line).



SunLong Biotech Co.,LTD
Tel: 0086-571-56623320 Fax:0086-571-56623318
E-mail:sales@sunlongbiotech.com
www.sunlongbiotech.com

Comment: Line red is the positive signal for SLM-60595R