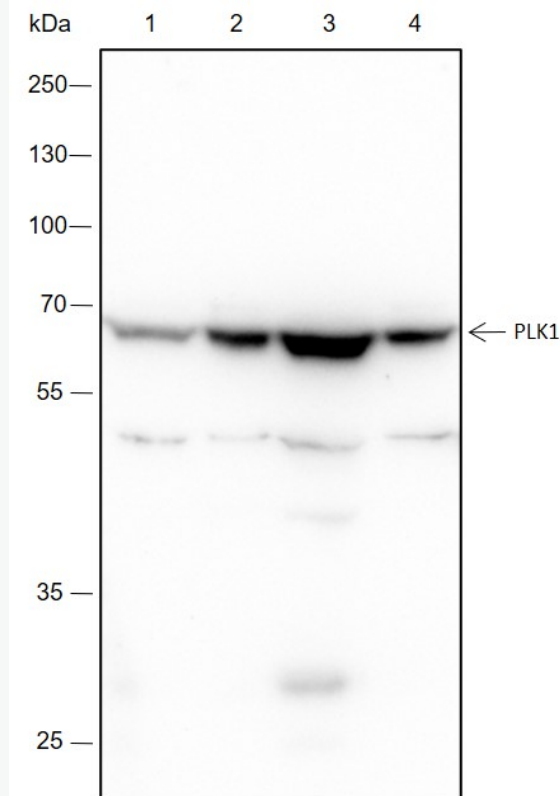


Rabbit Anti-PLK1 antibody

SLM-60594R

Product Name	PLK1
Chinese Name	
Immunogen Species	Rabbit
Clonality	Monoclonal
Clone NO.	C2A5
React Species	Human
Applications	WB=1:500-2000 not yet tested in other applications. optimal dilutions/concentrations should be determined by the end user.
Cellular localization	The nucleus
Form	Liquid
Concentration	1mg/ml
Lsotype	IgG
Purification	Affinity purified by Protein A
Buffer Solution	1M TBS(pH7.4) with 1% BSA, 3% Proclin300 and 50% Glycerol.
Storage	Shipped at 4°C. Store at -20 °C for one year. Avoid repeated freeze/thaw cycles.
Attention	This product as supplied is intended for research use only, not for use in human, therapeutic or diagnostic applications.
PubMed	PubMed
Product Detail	PLK1 (Polo-like Kinase 1) 属于 Polo 样激酶家族，是一类广泛存在于真核细胞中的丝氨酸/苏氨酸激酶。人类 PLK1 基因位于 16p12，mRNA 约 2.3 kb，蛋白分子量约为 68kDa。

Product Picture



Blocking buffer: 5% NFDm/TBST

Primary ab dilution: 1:2000

Primary ab incubation condition: 2 hours at room temperature

Secondary ab: Goat Anti-Rabbit IgG H&L (HRP)

Lysate: 1: HeLa, 2: K562, 3: HepG2, 4: Jurkat

Protein loading quantity: 20 μ g

Exposure time: 60 s

Predicted MW: 68 kDa

Observed MW: 68 kDa