

Rabbit Anti-LY75 antibody

SLM-60593R

Product Name LY75

Chinese Name lymphocyte 抗原 75 (CD205) Recombinant rabbit monoclonal anti

Alias LY75_HUMAN; Lymphocyte antigen 75; CD205; CLEC13B; Ly-75; C-type lectin domain family 13 member B; DEC-205; gp200-MR6;

Immunogen Species Rabbit

Clonality Monoclonal

Clone NO. D11H12

React Species Human,Mouse,Rat

Applications IHC-P=1:100-500,IHC-F=1:100-500,IF=1:100-500,WB=1:500-2000 (Paraffin sections need antigen repair)
not yet tested in other applications.
optimal dilutions/concentrations should be determined by the end user.

Theoretical molecular weight 195kDa

Cellular localization cytoplasmic

Form Liquid

Concentration 1mg/ml

Lsotype IgG

Purification Affinity purified by Protein A

Buffer Solution 1M TBS(pH7.4) with 1% BSA, 3% Proclin300 and 50% Glycerol.

Storage Shipped at 4°C. Store at -20 °C for one year. Avoid repeated freeze/thaw cycles.

Attention This product as supplied is intended for research use only, not for use in human, therapeutic or diagnostic applications.

PubMed [PubMed](#)

Product Detail Predicted to enable signaling receptor activity. Predicted to be involved in immune response and inflammatory response. Located in extracellular exosome. [provided by Alliance of Genome Resources, Apr 2022]

Subcellular Location:

Membrane; Single-pass type I membrane protein.

Tissue Specificity:

Expressed in spleen, thymus, colon and peripheral blood lymphocytes. Detected in myeloid and B-lymphoid cell lines. Isoform 2 and isoform 3 are expressed in malignant Hodgkin lymphoma cells called Hodgkin and Reed-Sternberg (HRS) cells.

SWISS:

O60449

Gene ID:

4065

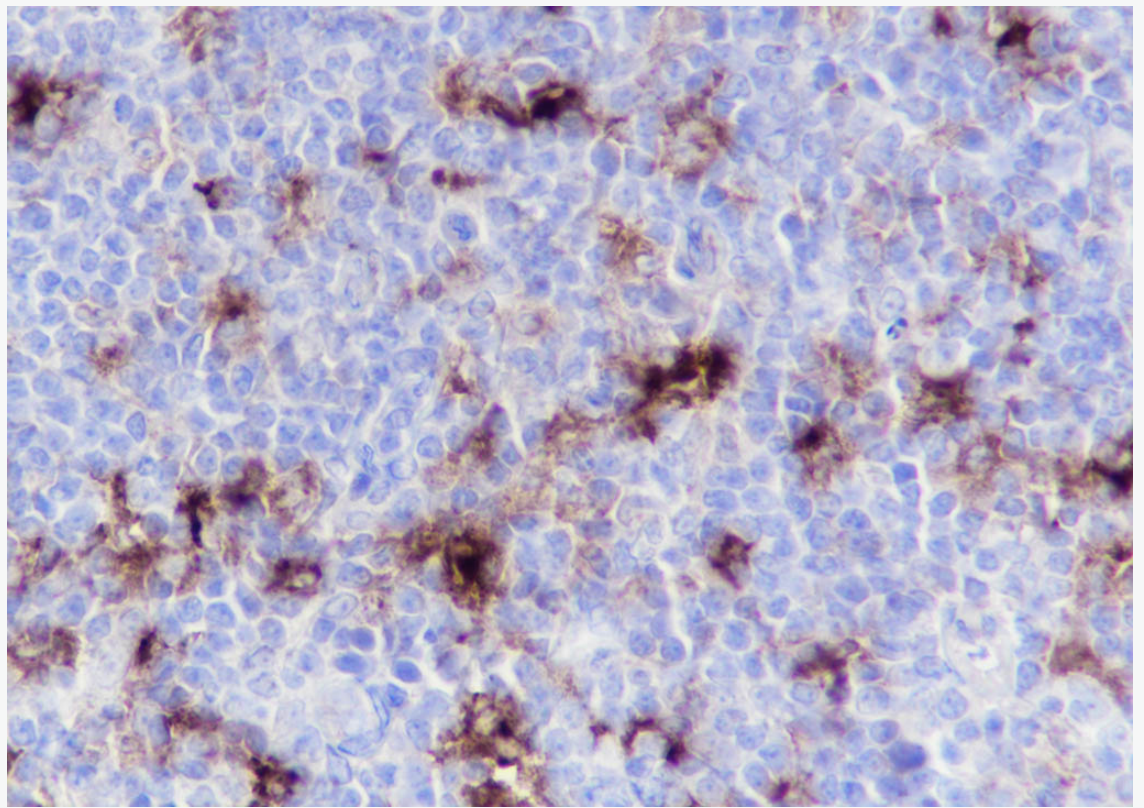
Database links:

[Entrez Gene: 4065](#) Human

[SwissProt: O60449](#) Human

LY75/DEC-205 是一种介导胞吞作用的多凝集素受体,主要表达于树突状细胞和胸腺 epithelial cells 表面,属于巨噬细胞甘露糖受体家族成员。

**Product
Picture**



Tissue: Human tonsil

Section type: Formalin fixed & Paraffin -embedded section

Retrieval method: High temperature and high pressure

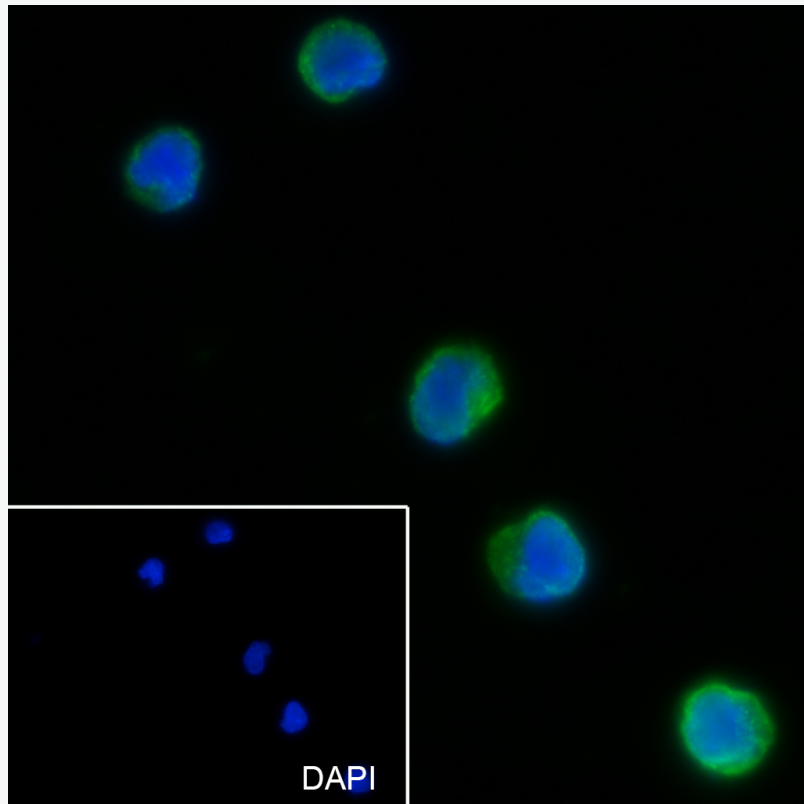
Retrieval buffer: Tris/EDTA buffer, pH 9.0 Primary ab dilution: 1:500

Primary ab incubation condition: 1 hour at room temperature

Secondary ab: SP Kit(Rabbit) (sp-0023)

Counter stain: Hematoxylin (Blue)

Comment: Color brown is the positive signal for SLM-60593R



Cell line: Raji

Fixative: 4% Paraformaldehyde

Permeabilization: 0.1% TritonX-100

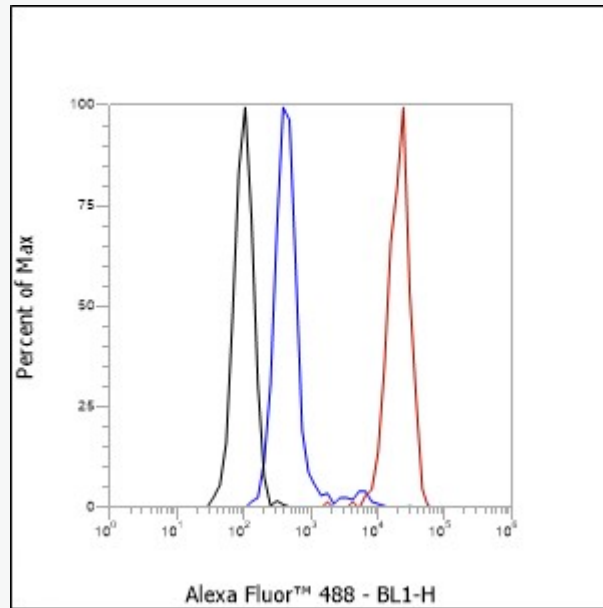
Primary ab dilution: 1:50

Primary incubation condition: 4°C overnight

Secondary ab: Goat Anti-Rabbit IgG

Nuclear counter stain: DAPI (Blue)

Comment: Color green is the positive signal for SLM-60593R



Cell line: Raji

Fixative: 4% Paraformaldehyde

Permeabilization: 90% Methanol

Primary ab dilution: 1:100

Secondary ab: Goat anti Rabbit IgG

Unlabelled control: The cell without incubation with primary antibody and secondary antibody (Black line).

Isotype control: Rabbit monoclonal IgG (Blue line).

Comment: Line red is the positive signal for SLM-60593R