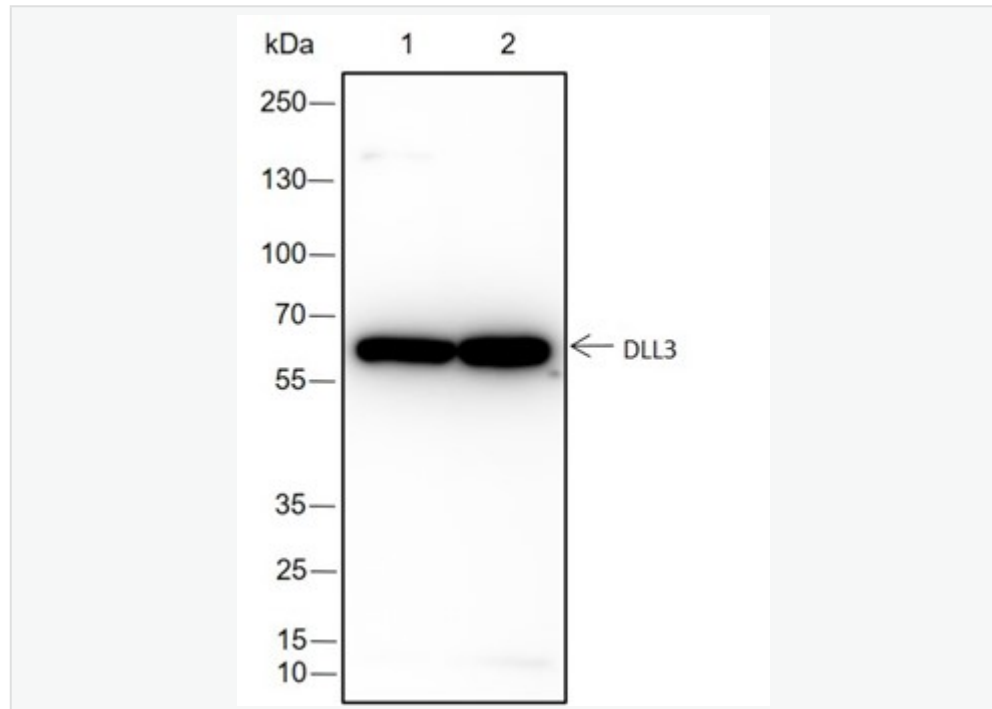


Rabbit Anti-DLL3 antibody

SLM-60592R

Product Name	DLL3
Chinese Name	
Immunogen Species	Rabbit
Clonality	Monoclonal
Clone NO.	G2E2
React Species	Human
Applications	WB=1:500-1000 not yet tested in other applications. optimal dilutions/concentrations should be determined by the end user.
Cellular localization	cytoplasmic
Form	Liquid
Concentration	1mg/ml
Lsotype	IgG
Purification	Affinity purified by Protein A
Buffer Solution	1M TBS(pH7.4) with 1% BSA, 3% Proclin300 and 50% Glycerol.
Storage	Shipped at 4°C. Store at -20 °C for one year. Avoid repeated freeze/thaw cycles.
Attention	This product as supplied is intended for research use only, not for use in human, therapeutic or diagnostic applications.
PubMed	PubMed
Product Detail	Delta 样蛋白 3(DLL3)作为 Notch 通路的配体,特异性高表达于 SCLC (小细胞肺癌) 细胞表面。在 SCLC 的 Tumour 启动、上皮-间质转化、侵袭和转移中扮演着重要的角色。



Product Picture

Blocking buffer: 5% NFDN/TBST

Primary ab dilution: 1:1000

Primary ab incubation condition: 2 hours at room temperature

Secondary ab: Goat Anti-Rabbit IgG H&L (HRP)

Lysate: 1: TT, 2: A375

Protein loading quantity: 20 μ g

Exposure time: 60 s

Predicted MW: 65 kDa

Observed MW: 65 kDa