

Rabbit Anti-PAX9 antibody

SLM-60591R

Product Name PAX9

Chinese Name 配对盒基因 9Recombinant rabbit monoclonal anti

Alias Paired box 9; Paired box gene 9; Paired box homeotic gene 9; Paired box protein 9; Paired box protein Pax 9; Paired box protein Pax9; Paired domain gene 9; PAX 9; PAX9_HUMAN.

Immunogen Species Rabbit

Clonality Monoclonal

Clone NO. G12B2

React Species Human,Rat,Mouse

Applications WB=1:500-2000,ICC/IF=1:50-200 (Paraffin sections need antigen repair)
not yet tested in other applications.
optimal dilutions/concentrations should be determined by the end user.

Theoretical molecular weight 36kDa

Cellular localization The nucleus The cell membrane

Form Liquid

Concentration 1mg/ml

Lsotype IgG/kappa

Purification Affinity purified by Protein A

Buffer Solution 1M TBS(pH7.4) with 1% BSA, 3% Proclin300 and 50% Glycerol.

Storage Shipped at 4°C. Store at -20 °C for one year. Avoid repeated freeze/thaw cycles.

Attention This product as supplied is intended for research use only, not for use in human, therapeutic or diagnostic applications.

PubMed [PubMed](#)

Product Detail This gene is a member of the paired box (PAX) family of transcription factors. Members of this gene family typically contain a paired box domain, an octapeptide, and a paired-type homeodomain. These genes play critical roles during fetal development and cancer growth.

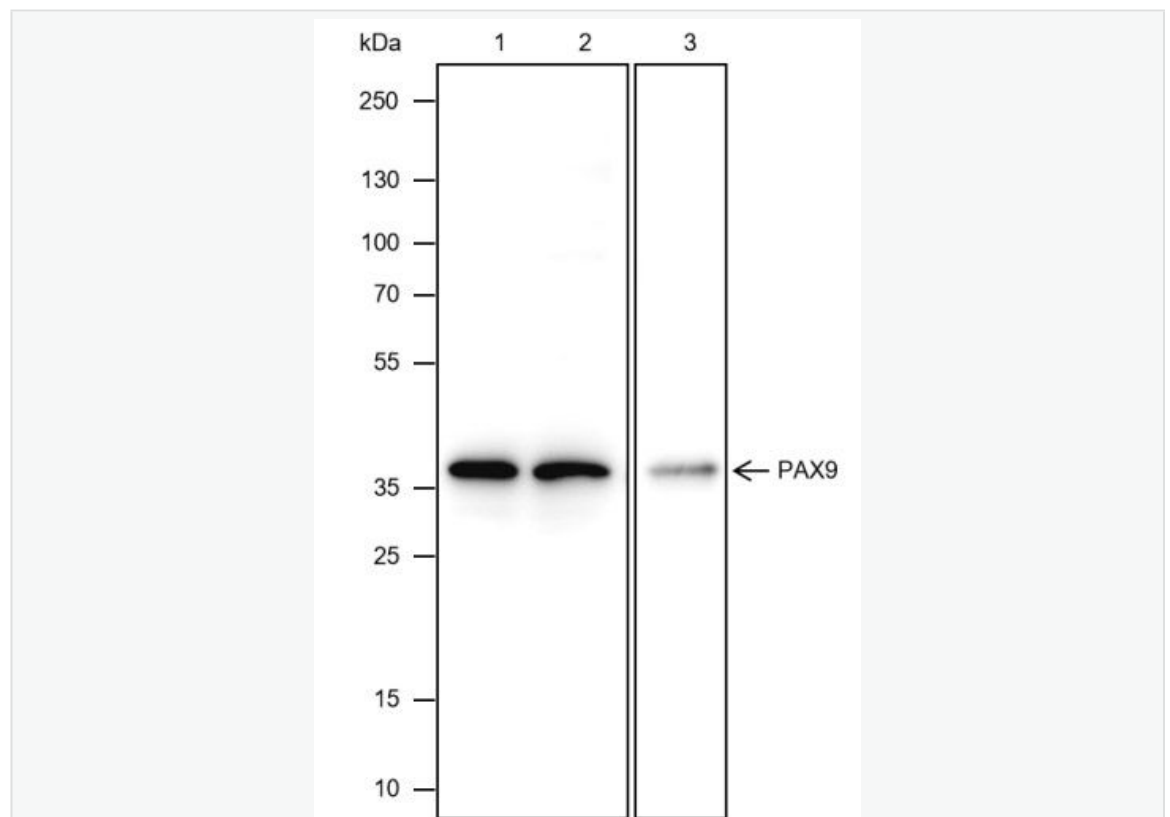
Mice lacking this gene exhibit impaired development of organs, musculature and the skeleton, including absent and abnormally developed teeth, and neonatal lethality. Mutations in the human gene are associated with selective tooth agenesis-3. [provided by RefSeq, Sep 2015]

SWISS:
P55771

Gene ID:
5083

PAX9 是一种在人类体内由 PAX9 基因编码的蛋白质。该基因是转录因子 PAX 家族中的一员。在小鼠胚胎发生过程中，PAX9 从胚胎期第 8.5 天开始表达，到胚胎期第 9.5 天时更加明显；在这个阶段，它的表达仅限于咽内胚层。随后，PAX9 逐渐在轴向骨架中表达。PAX9 是颅面、牙齿和肢体发育所必需的，也可能涉及到鳞状上皮以及各种器官及骨骼的发育。在某些人群中，PAX9 在智齿缺失中发挥了一定的作用。同时，它也是胸腺、甲状旁腺、鳃下体、牙齿、颅骨和喉部的骨骼以及远端肢体正常发育所必需的转录因子。

**Product
Picture**



Blocking buffer: 5% NFDN/TBST

Primary Ab dilution: 1:1000

Primary Ab incubation condition: 2 hours at room temperature

Secondary Ab: Goat Anti-Rabbit IgG H&L (HRP)

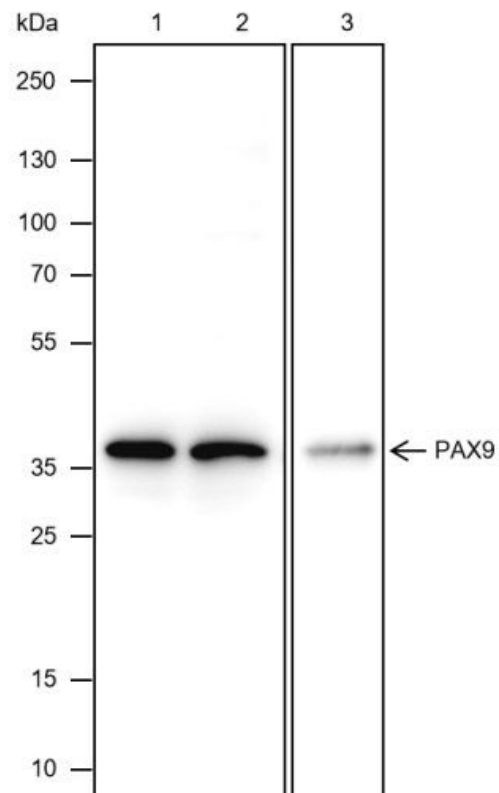
Lysate: 1: PC-3, 2: Jurkat, 3: Rat thymus

Protein loading quantity: 20 μ g

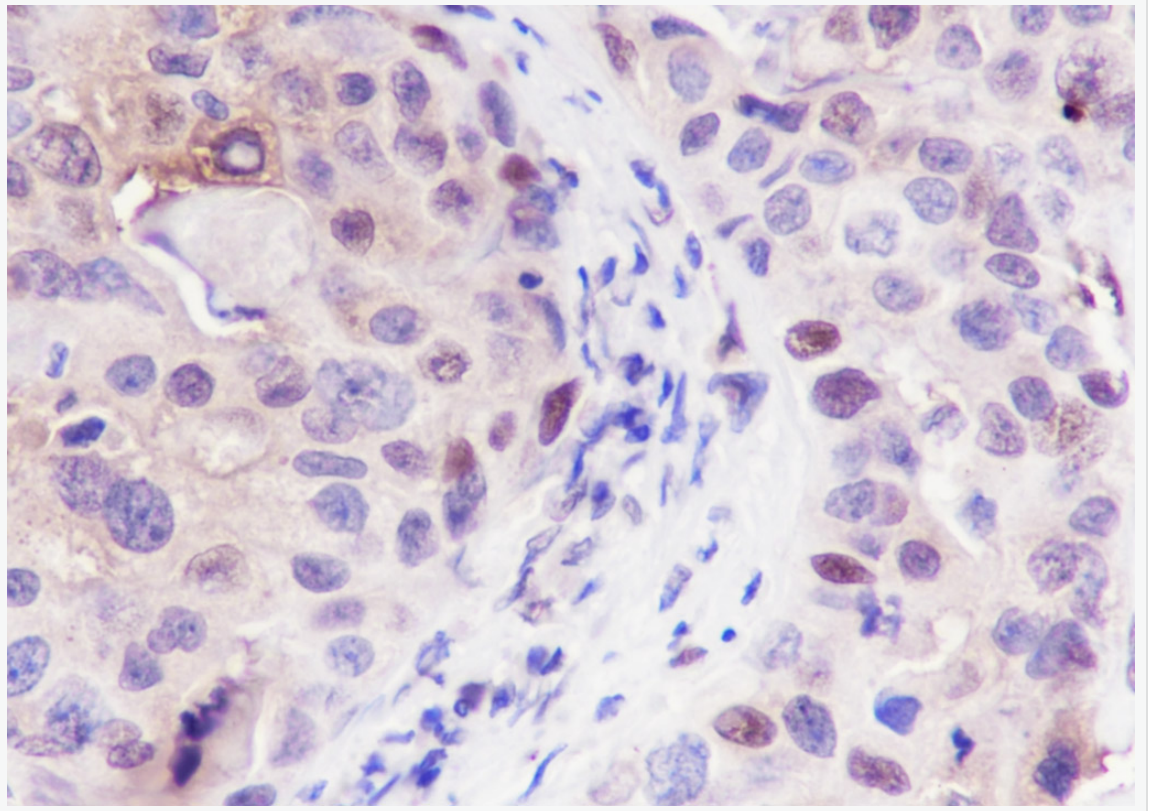
Exposure time: 60 s

Predicted MW: 36 kDa

Observed MW: 36 kDa



ceshi



Tissue: Human breast carcinoma

Section type: Formalin-fixed & Paraffin -embedded section

Retrieval method: High temperature and high pressure

Retrieval buffer: Tris/EDTA buffer, pH 9.0 Primary Ab dilution: 1:100

Primary Ab incubation condition: 1 hour at room temperature

Secondary Ab: SP Kit(Rabbit) (sp-0023)

Counter stain: Hematoxylin (Blue)

Comment: Color brown is the positive signal for SLM-60591R