

## Rabbit Anti-AATF antibody

SLM-60590R

<b>Product Name</b>	AATF
<b>Chinese Name</b>	拮抗凋亡转录因子 Recombinant rabbit monoclonal anti
<b>Alias</b>	Apoptosis antagonizing transcription factor; CHE1; DED; AATF_HUMAN; Apoptosis-antagonizing transcription factor; Rb-binding protein Che-1; Protein AATF;Rb binding protein Che 1.
<b>Research Area</b>	Chromatin and nuclear signals transcriptional regulatory factor
<b>Immunogen Species</b>	Rabbit
<b>Clonality</b>	Monoclonal
<b>Clone NO.</b>	3A6
<b>React Species</b>	Human
<b>Applications</b>	WB=1:500-2000,ICC/IF=1:100-500 not yet tested in other applications. optimal dilutions/concentrations should be determined by the end user.
<b>Theoretical molecular weight</b>	63kDa
<b>Cellular localization</b>	The nucleus
<b>Form</b>	Liquid
<b>Concentration</b>	1mg/ml
<b>immunogen</b>	KLH conjugated synthetic peptide derived from human AATF
<b>Lsotype</b>	IgG
<b>Purification</b>	affinity purified by Protein A
<b>Buffer Solution</b>	1M TBS(pH7.4) with 1% BSA, 3% Proclin300 and 50% Glycerol.
<b>Storage</b>	Shipped at 4°C. Store at -20 °C for one year. Avoid repeated freeze/thaw cycles.
<b>Attention</b>	This product as supplied is intended for research use only, not for use in human, therapeutic or diagnostic applications.
<b>PubMed</b>	<a href="#">PubMed</a>
<b>Product Detail</b>	The protein encoded by this gene was identified on the basis of its interaction with MAP3K12/DLK, a protein kinase known to be involved in the induction

of cell apoptosis. This gene product contains a leucine zipper, which is a characteristic motif of transcription factors, and was shown to exhibit strong transactivation activity when fused to Gal4 DNA binding domain. Overexpression of this gene interfered with MAP3K12 induced apoptosis. [provided by RefSeq, Jul 2008]

**SWISS:**  
Q9NY61

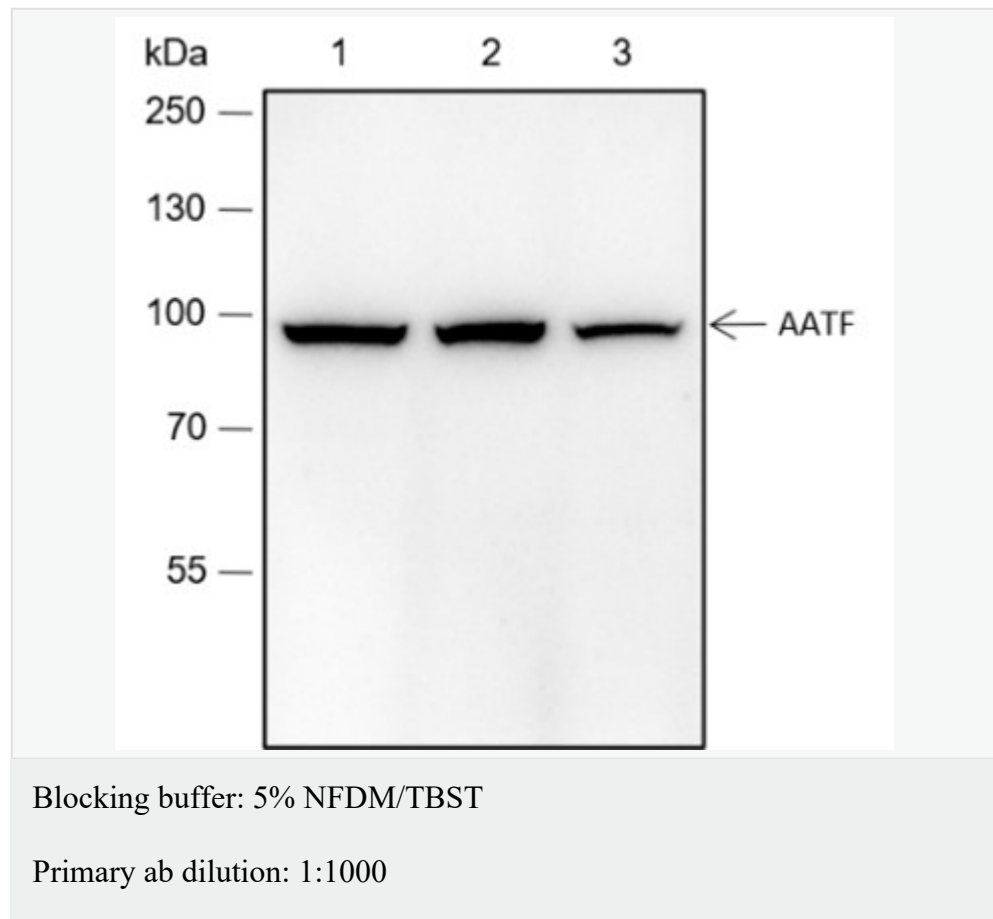
**Gene ID:**  
26574

**Database links:**

[Entrez Gene: 26574](#) Human

[SwissProt: Q9NY61](#) Human

**Product Picture**



Primary ab incubation condition: 2 hours at room temperature

Secondary ab: Goat Anti-Rabbit IgG H&L (HRP)

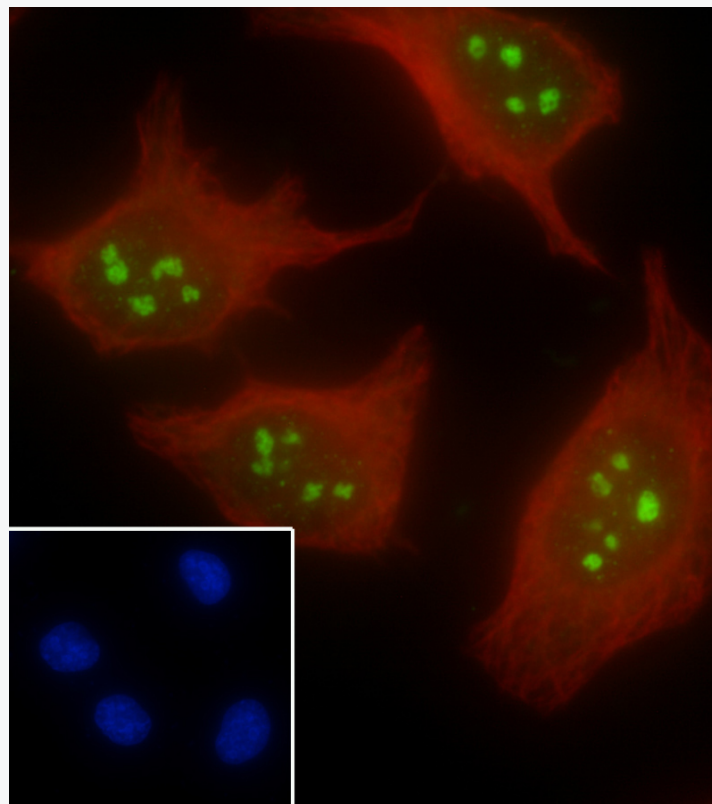
Lysate: 1: 293T, 2: HeLa, 3: HepG2

Protein loading quantity: 20  $\mu$ g

Exposure time: 60 s

Predicted MW: 63 kDa

Observed MW: 80 kDa

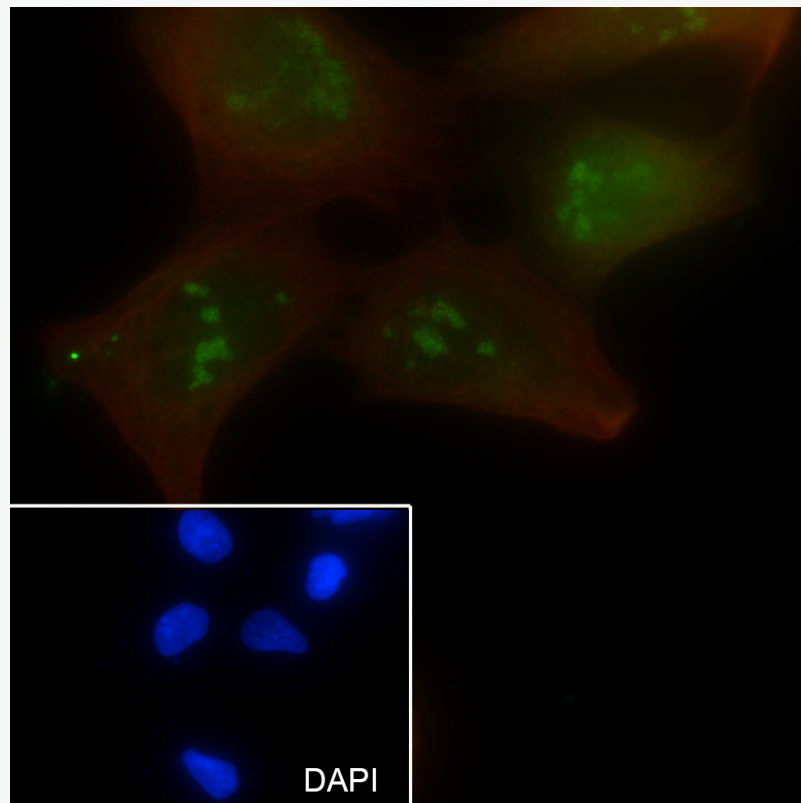


Cell line: HeLa Fixative: 100% Ice-cold methanol Permeabilization: 0.1%

TritonX-100 Primary ab dilution: 1:50 Primary incubation condition: 4°C

overnight Secondary ab: Goat Anti-Rabbit IgG Nuclear counter stain:

DAPI (Blue) Counter stain: Tubulin (Red) Comment: Color green is the positive signal for SLM-60590R



Cell line: HEK-293 Fixative: 4% Paraformaldehyde Permeabilization:

0.1% TritonX-100 Primary ab dilution: 1:50 Primary incubation

condition: 4°C overnight Secondary ab: Goat Anti-Rabbit IgG Nuclear

counter stain: DAPI (Blue) Counter stain: Tubulin (Red) Comment: Color

green is the positive signal for SLM-60590R