



## Rabbit Anti-Paxillin antibody

SLM-60586R

**Product Name** Paxillin

**Chinese Name**

**Immunogen Species** Rabbit

**Clonality** Monoclonal

**Clone NO.** E2E8

**React Species** Human,Mouse,Rat

WB=1:500-2000,ICC/IF=1:50-200,Flow-Cyt=1:50-100,IHC-P=1:50-200,IHC-F=1:50-200,IF=1

**Applications** not yet tested in other applications.

optimal dilutions/concentrations should be determined by the end user.

**Cellular localization** The cell membrane

**Form** Liquid

**Concentration** 1mg/ml

**Lsotype** IgG

**Purification** Affinity purified by Protein A

**Buffer Solution** 1M TBS(pH7.4) with 1% BSA, 3% Proclin300 and 50% Glycerol.

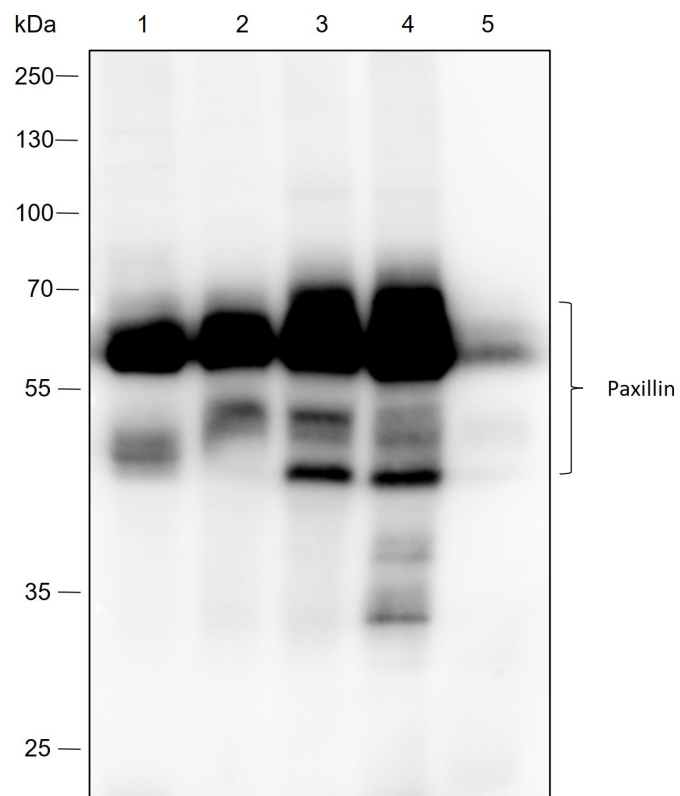
**Storage** Shipped at 4°C. Store at -20 °C for one year. Avoid repeated freeze/thaw cycles.

**Attention** This product as supplied is intended for research use only, not for use in human, therapeutic or diagnostic applications.

**PubMed** [PubMed](#)

**Product Detail** Cytoskeleton 蛋白参与细胞粘附到 Extracellular matrix (粘着斑) 位点的肌动蛋白膜附着。

**Product  
Picture**



Blocking buffer: 5% NFDm/TBST

Primary ab dilution: 1:2000

Primary ab incubation condition: 2 hours at room temperature

Secondary ab: Goat Anti-Rabbit IgG H&L (HRP)

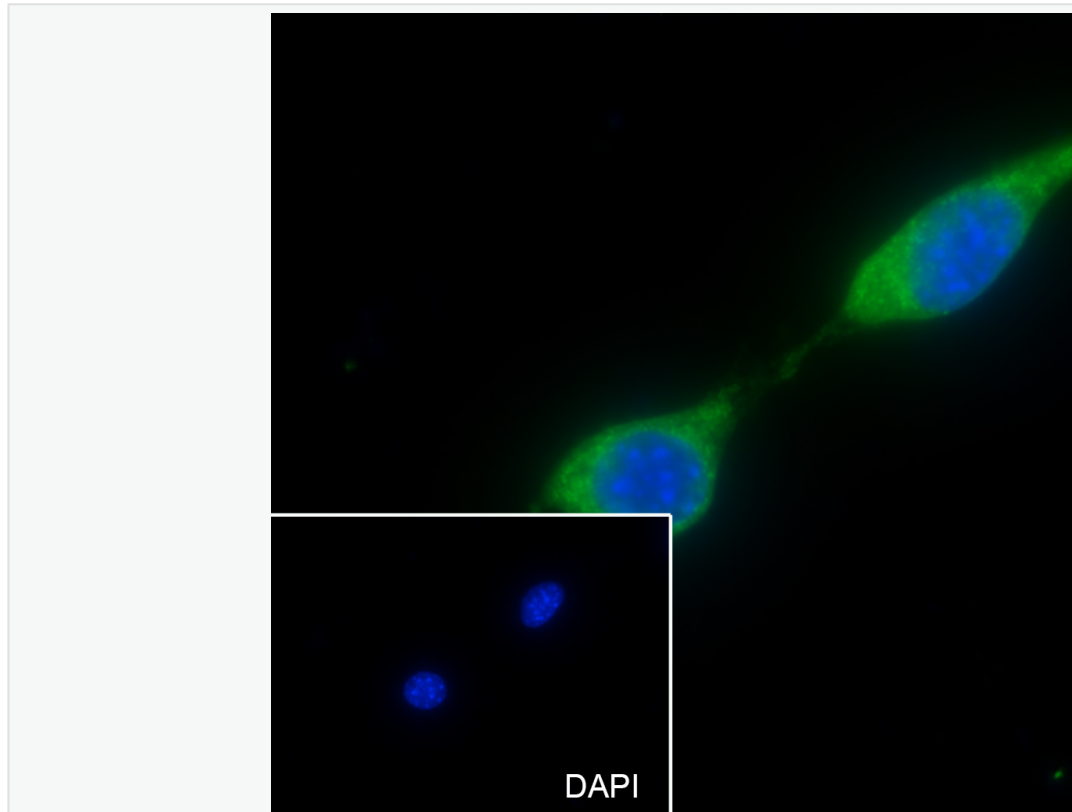
Lysate: 1: HeLa, 2: A431, 3: U87-MG, 4: PC-3, 5: NIH-3T3

Protein loading quantity: 20  $\mu$ g

Exposure time: 30 s

Predicted MW: 65 kDa

Observed MW: 45-70 kDa



Cell line: NIH-3T3

Fixative: 4% Paraformaldehyde

Permeabilization: 0.1% TritonX-100

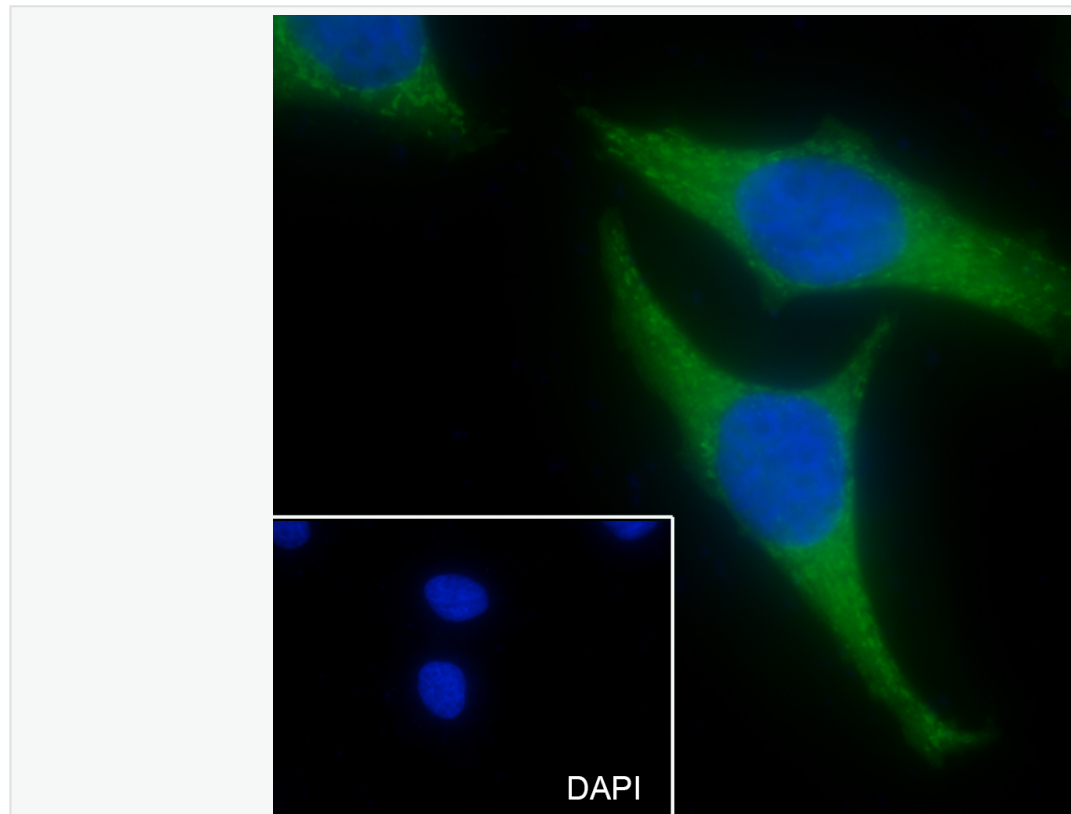
Primary ab dilution: 1:50

Primary incubation condition: 4°C overnight

Secondary ab: Goat Anti-Rabbit IgG

Nuclear counter stain: DAPI (Blue)

Comment: Color green is the positive signal for SLM-60586R



Cell line: HeLa

Fixative: 4% Paraformaldehyde

Permeabilization: 0.1% TritonX-100

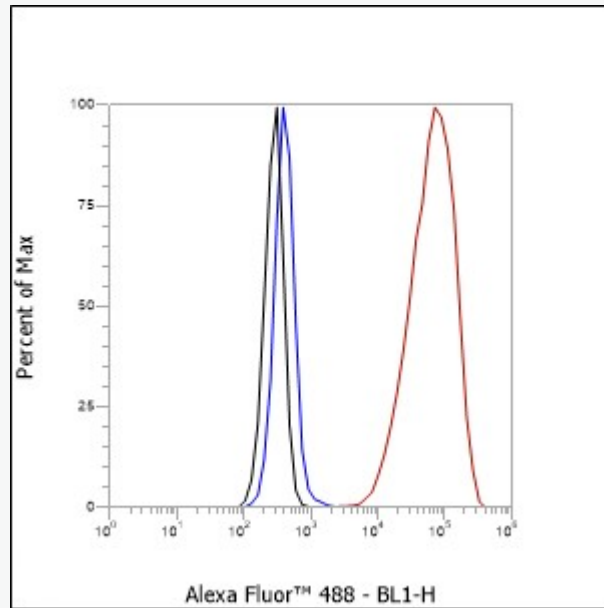
Primary ab dilution: 1:50

Primary incubation condition: 4°C overnight

Secondary ab: Goat Anti-Rabbit IgG

Nuclear counter stain: DAPI (Blue)

Comment: Color green is the positive signal for SLM-60586R



Cell line: HeLa

Fixative: 4% Paraformaldehyde

Permeabilization: 90% Methanol

Primary ab dilution: 1:100

Secondary ab: Goat anti Rabbit IgG

Unlabelled control: The cell without incubation with primary antibody and secondary antibody (Black line).

Isotype control: Rabbit monoclonal IgG (Blue line).

Comment: Line red is the positive signal for PTM-6017