

Mouse Anti-NUDT21 antibody

SLM-60584M

Product Name NUDT21

Chinese Name 剪切和多聚腺苷酸化特异性因子 5 单克隆抗体

Alias

CFIM 25; CFIM25; Cleavage and polyadenylation specific factor 5 25 kD subunit; Cleavage and polyadenylation specific factor 5 25 kDa; Cleavage and polyadenylation specific factor 5; Cleavage and polyadenylation specificity factor 25 kDa subunit; Cleavage and polyadenylation specificity factor subunit 5; Cleavage factor Im complex 25 kDa subunit; CPSF 25; CPSF 25 kDa subunit; CPSF 5; CPSF25; CPSF5; CPSF5_HUMAN; DKFZp686H1588; Nucleoside diphosphate linked moiety X motif 21; Nucleoside diphosphate-linked moiety X motif 21; Nudix (nucleoside diphosphate linked moiety X) type motif 21; Nudix motif 21; NUDT 21; Pre mRNA cleavage factor Im (25kD); Pre mRNA cleavage factor Im 25 kDa subunit; Pre mRNA cleavage factor Im 25kD subunit; Pre-mRNA cleavage factor Im 25 kDa subunit.

Immunogen Species

Mouse

Clonality

Monoclonal

Clone NO.

H8B8

React Species

Human,Mouse

Applications

WB=1:500-1000,IHC-P=1:100-500,IHC-F=1:100-500,ICC/IF=1:50-200,IF=1:100-500
(Paraffin sections need antigen repair)
not yet tested in other applications.
optimal dilutions/concentrations should be determined by the end user.

Theoretical molecular weight

27kDa

Cellular localization

The nucleus

Form

Liquid

Concentration

1mg/ml

Lsotype

IgG1/Kappa

Purification

Affinity purified by Protein G

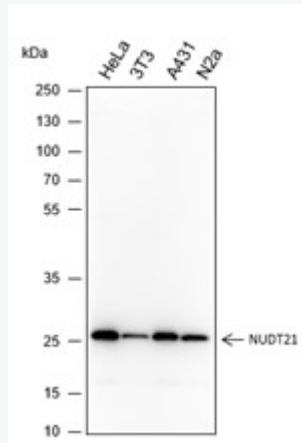
Buffer Solution

1M TBS(pH7.4) with 1% BSA, 3% Proclin300 and 50% Glycerol.



Storage	Shipped at 4°C. Store at -20 °C for one year. Avoid repeated freeze/thaw cycles.
Attention	This product as supplied is intended for research use only, not for use in human, therapeutic or diagnostic applications.
PubMed	PubMed The protein encoded by this gene is one subunit of a cleavage factor required for 3' RNA cleavage and polyadenylation processing. The interaction of the protein with the RNA is one of the earliest steps in the assembly of the 3' end processing complex and facilitates the recruitment of other processing factors. This gene encodes the 25kD subunit of the protein complex, which is composed of four polypeptides. [provided by RefSeq, Jul 2008]
	SWISS: O43809
	Gene ID: 11051
	Database links: Entrez Gene: 11051 Human
Product Detail	Entrez Gene: 68219 Mouse SwissProt: O43809 Human SwissProt: Q9CQF3 Mouse

切割因子 Im (CFIm) 复合物的组成部分, 作为前 mRNA 3'端切割和多聚腺苷酸化过程的激活剂, 是前 mRNA 成熟为功能性 mRNAs 所需。CFIm 有助于在 mRNA 前 3'端的特定序列上招募多蛋白复合物, 即所谓的切割和多聚腺苷酸化信号 (pA 信号)。大多数前 mRNAs 含有多种 pA 信号, 导致选择性切割和多聚腺苷酸化 (APA) 产生具有可变 3'-末端形成的 mRNAs。CFIm 复合物通过与大量前 mRNAs 的 3'-非翻译区 (UTR) 中的 5'-UGUA-3'元件结合, 在 APA 过程中充当裂解和多聚腺苷酸化位点选择的关键调节因子。NUDT21/CPSF5 通过招募 CPSF6 和/或 CPSF7 间接激活 mRNA 3'-加工机制。结合位于 pA 信号上游的 5'-UGUA-3'元件, 作为前 mRNA 3'末端处理的增强子。



**Product
Picture**

Blocking buffer: 5% NFDM/TBST

Primary ab dilution: 1:1000

Primary ab incubation condition: room temperature 2h

Secondary ab: Goat Anti-Mouse IgG H&L (HRP)

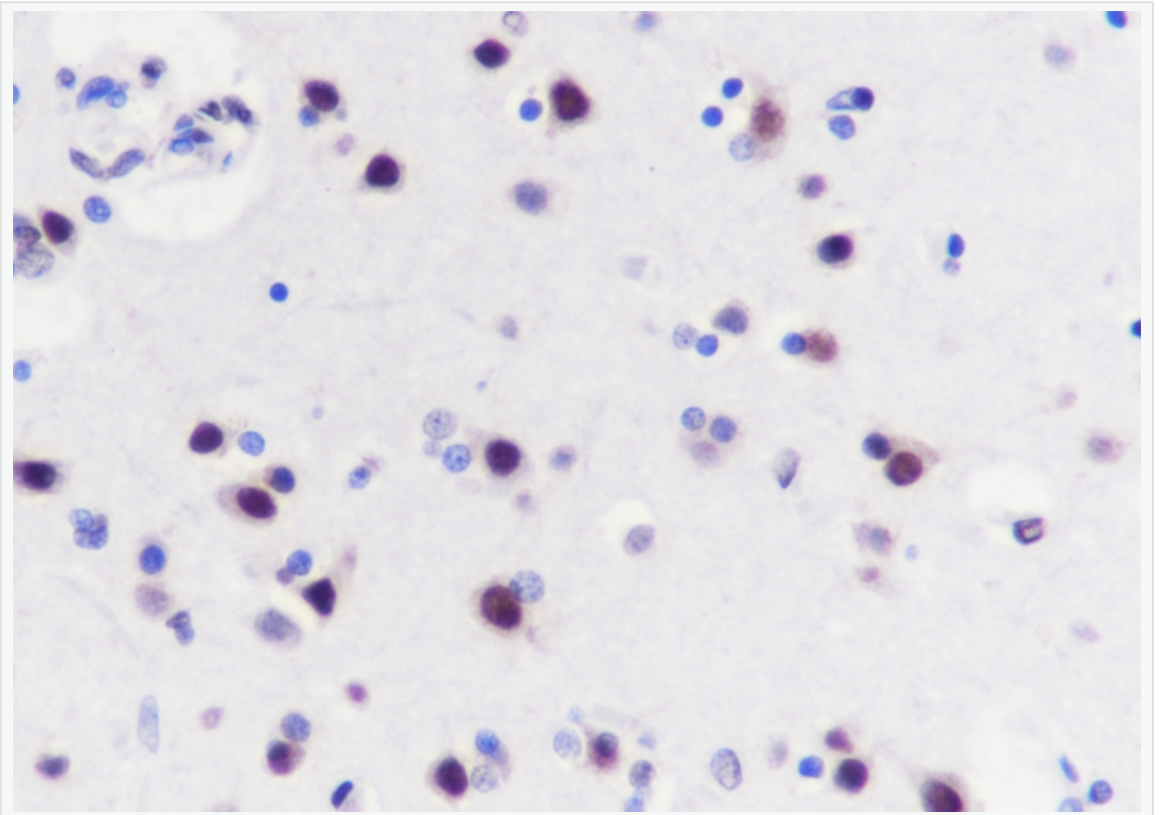
Lysate: HeLa, 3T3, A431, N2a

Protein loading quantity: 20 μ g

Exposure time: 30 s

Predicted MW: 27 kDa

Observed MW: 27 kDa



Tissue: Human brain

Section type: Formalin fixed & Paraffin -embedded section

Retrieval method: High temperature and high pressure

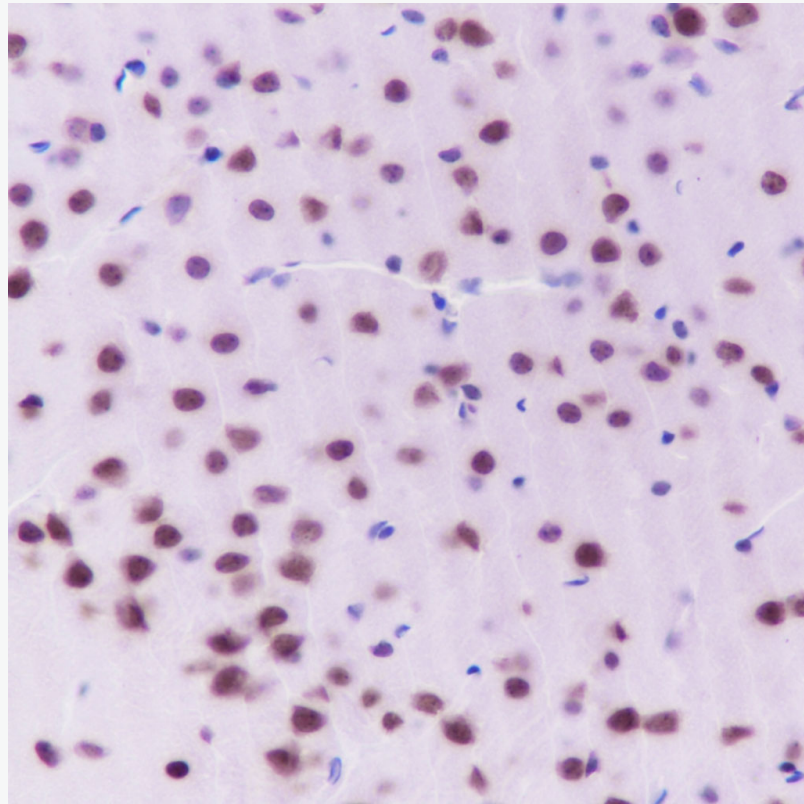
Retrieval buffer: Tris/EDTA buffer, pH 9.0 Primary ab dilution: 1:100

Primary ab incubation condition: 1 hour at room temperature

Secondary ab: SP Kit(Mouse)(sp-0024)

Counter stain: Hematoxylin (Blue)

Comment: Color brown is the positive signal for SLM-60584M



Tissue: Mouse brain

Section type: Formalin fixed & Paraffin -embedded section

Retrieval method: High temperature and high pressure

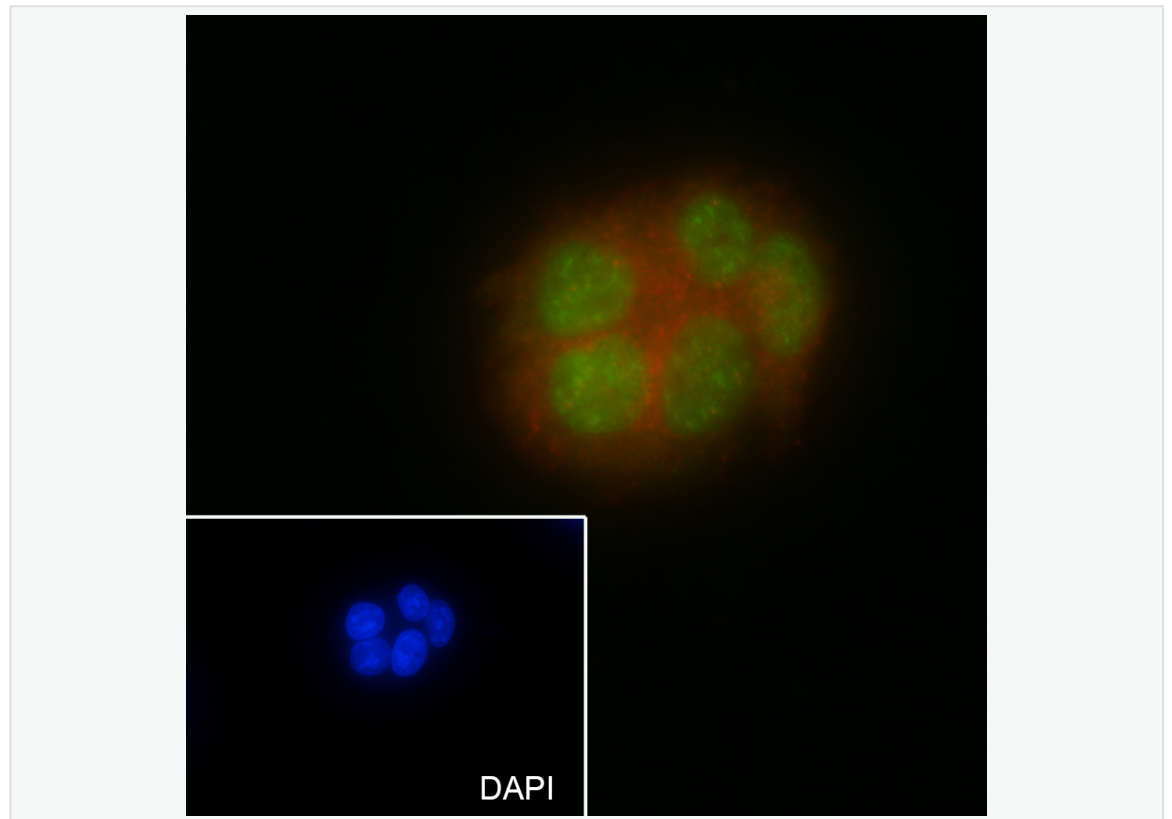
Retrieval buffer: Tris/EDTA buffer, pH 9.0 Primary ab dilution: 1:100

Primary ab incubation condition: 1 hour at room temperature

Secondary ab:SP Kit(Mouse)(sp-0024)

Counter stain: Hematoxylin (Blue)

Comment: Color brown is the positive signal for SLM-60584M



Cell line: HepG2

Fixative: 100% Ice-cold methanol

Permeabilization: 0.1% TritonX-100

Primary ab dilution: 1:50

Primary incubation condition: 4°C overnight

Secondary ab: Goat Anti-Mouse IgG

Nuclear counter stain: DAPI (Blue)

Counter stain: Tubulin (Red)

Comment: Color green is the positive signal for PTM-6012