

Rabbit Anti-Inhibin alpha antibody

SLM-60582R

Product Name Inhibin alpha

Chinese Name 抑制素 A/Inhibin α Recombinant rabbit monoclonal anti

Alias A inhibin subunit precursor; IHA; INHA; Inhibin alpha chain; Inhibin alpha chain precursor; Inhibin alpha subunit; INHA_HUMAN.

Research Area Tumour Signal transduction Growth factors and hormones

Immunogen Species Rabbit

Clonality Monoclonal

Clone NO. A8H6

React Species Human

Applications WB=1:500-1000,IHC-P=1:200-1000,IHC-F=1:50-100,ICC/IF=1:50-100,IF=1:50-100
(Paraffin sections need antigen repair)
not yet tested in other applications.
optimal dilutions/concentrations should be determined by the end user.

Theoretical molecular weight 15kDa

Cellular localization Secretory protein

Form Liquid

Concentration 1mg/ml

immunogen KLH conjugated synthetic peptide derived from human Inhibin alpha

Lsotype IgG

Purification affinity purified by Protein A

Buffer Solution 1M TBS(pH7.4) with 1% BSA, 3% Proclin300 and 50% Glycerol.

Storage Shipped at 4°C. Store at -20 °C for one year. Avoid repeated freeze/thaw cycles.

Attention This product as supplied is intended for research use only, not for use in human, therapeutic or diagnostic applications.

PubMed [PubMed](#)

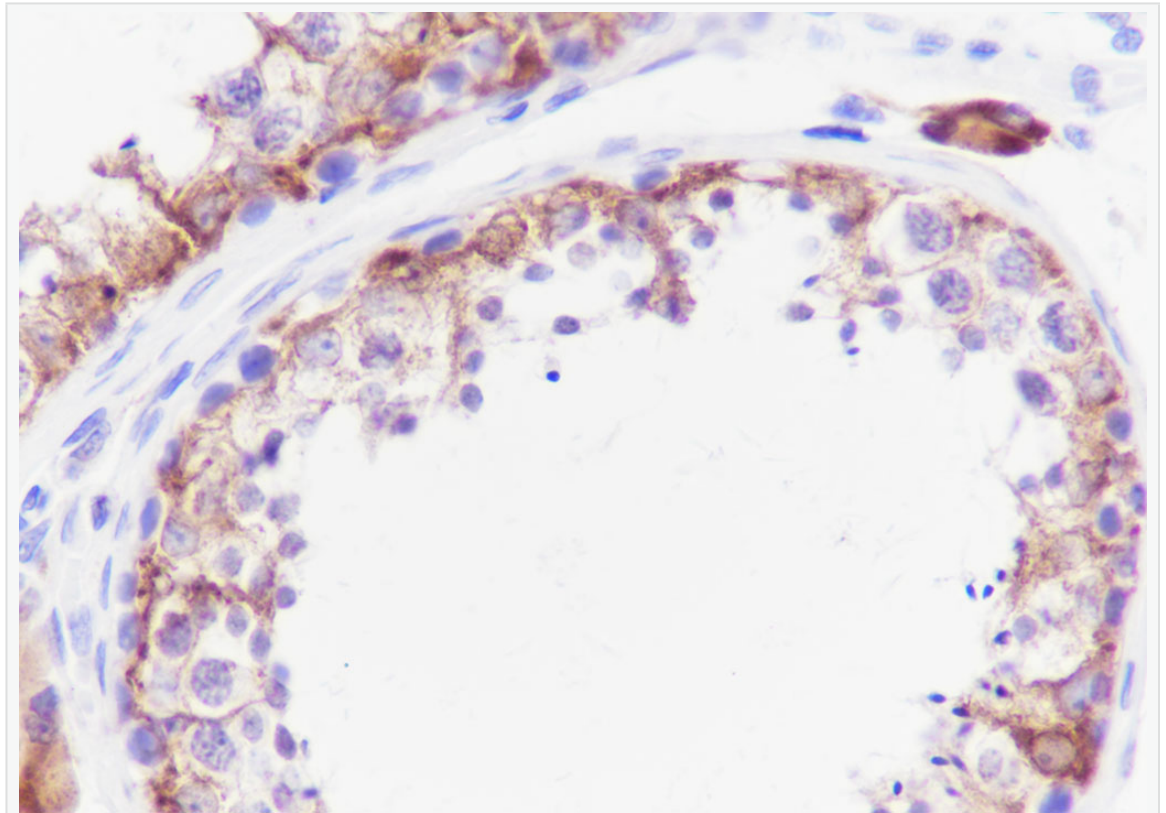
**Product
Detail**

This gene encodes a member of the TGF-beta (transforming growth factor-beta) superfamily of proteins. The encoded preproprotein is proteolytically processed to generate multiple peptide products, including the alpha subunit of the inhibin A and B protein complexes. These complexes negatively regulate follicle stimulating hormone secretion from the pituitary gland. Inhibins have also been implicated in regulating numerous cellular processes including cell proliferation, apoptosis, immune response and hormone secretion. Mutations in this gene may be associated with male infertility and premature ovarian failure in female human patients. [provided by RefSeq, Aug 2016]

SWISS:
Q04997

Gene ID:
3623

**Product
Picture**

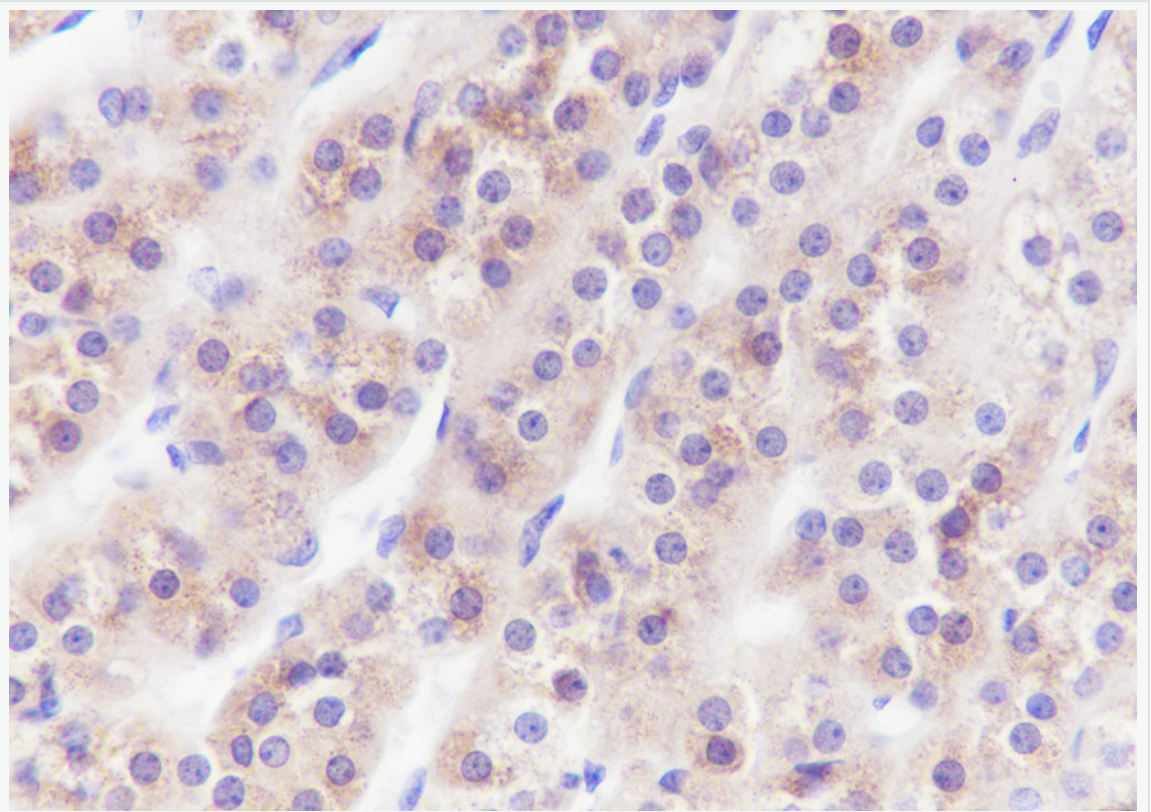


Tissue: Human testis Section type: Formalin fixed & Paraffin -embedded section

Retrieval method: High temperature and high pressure Retrieval buffer: Tris/EDTA

buffer, pH 9.0 Primary Ab dilution: 1:1000 Primary Ab incubation condition: 1 hour at

room temperature Secondary Ab: SP Kit(Rabbit) (sp-0023) Counter stain: Hematoxylin (Blue) Comment: Color brown is the positive signal for SLM-60582R



Tissue: Human adrenal gland Section type: Formalin fixed & Paraffin -embedded section Retrieval method: High temperature and high pressure Retrieval buffer: Tris/EDTA buffer, pH 9.0 Primary Ab dilution: 1:1000 Primary Ab incubation condition: 1 hour at room temperature Secondary Ab: SP Kit(Rabbit) (sp-0023) Counter stain: Hematoxylin (Blue) Comment: Color brown is the positive signal for SLM-60582R