

## Rabbit Anti-GSTP1 antibody

SLM-60581R

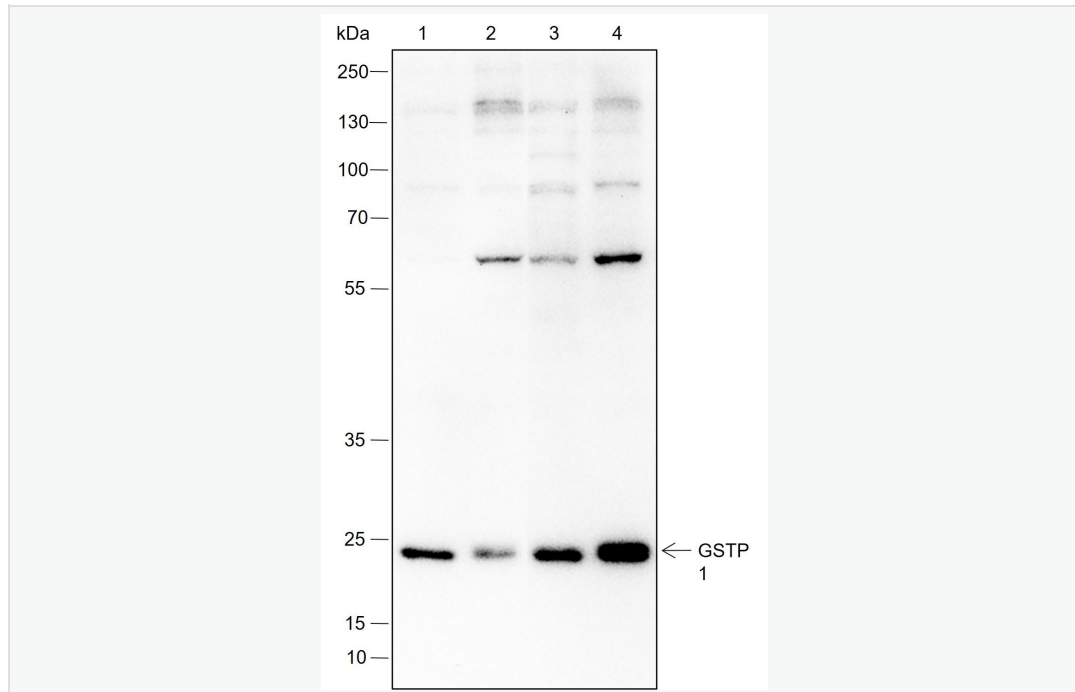
<b>Product Name</b>	GSTP1
<b>Chinese Name</b>	谷胱甘肽硫转移酶 piRecombinant rabbit monoclonal anti
<b>Alias</b>	Glutathione S-Transferase pi; GST-Pi; DFN7; Gst-P1; FAEES3; Fatty Acid Ethyl Ester Synthase III; Glutathione S Transferase Pi; GST3; GST pi; PI; GSTP1_HUMAN.
<b>Research Area</b>	Tumour Cardiovascular immunology Neurobiology Signal transduction Stem cells Kinases and Phosphatases
<b>Immunogen Species</b>	Rabbit
<b>Clonality</b>	Monoclonal
<b>Clone NO.</b>	E7F9
<b>React Species</b>	Human, WB=1:500-2000,IHC-P=1:100-500,IHC-F=1:100-500,ICC/IF=1:50-200,IF=1:100-500,Flow-Cyt=1:50-100 (Paraffin sections need antigen repair)
<b>Applications</b>	not yet tested in other applications. optimal dilutions/concentrations should be determined by the end user.
<b>Theoretical molecular weight</b>	23kDa
<b>Cellular localization</b>	The nucleus cytoplasmic
<b>Form</b>	Liquid
<b>Concentration</b>	1mg/ml
<b>immunogen</b>	KLH conjugated synthetic peptide derived from human GSTP1
<b>Lsotype</b>	IgG
<b>Purification</b>	affinity purified by Protein A
<b>Buffer Solution</b>	1M TBS(pH7.4) with 1% BSA, 3% Proclin300 and 50% Glycerol.
<b>Storage</b>	Shipped at 4°C. Store at -20 °C for one year. Avoid repeated freeze/thaw cycles.
<b>Attention</b>	This product as supplied is intended for research use only, not for use in human, therapeutic or diagnostic applications.
<b>PubMed</b>	<a href="#">PubMed</a> Glutathione S-transferases (GSTs) are a family of enzymes that play an important role in detoxification by catalyzing the conjugation of many hydrophobic and electrophilic compounds with reduced glutathione. Based on their biochemical, immunologic, and structural properties, the soluble GSTs are categorized into 4 main classes: alpha, mu, pi, and theta. This GST family member is a polymorphic gene encoding active, functionally different GSTP1 variant proteins that are thought to function in xenobiotic metabolism and play a role in susceptibility to cancer, and other diseases. [provided by RefSeq, Jul 2008]
<b>Product Detail</b>	<b>SWISS:</b> P19157  <b>Gene ID:</b> 2950

**Database links:**

[Entrez Gene: 2950](#) Human

[SwissProt: P09211](#) Human

**Product  
Picture**



Blocking buffer: 5% NFDN/TBST

Primary ab dilution: 1:1000

Primary ab incubation condition: 2 hours at room temperature

Secondary ab: Goat Anti-Rabbit IgG H&L (HRP)

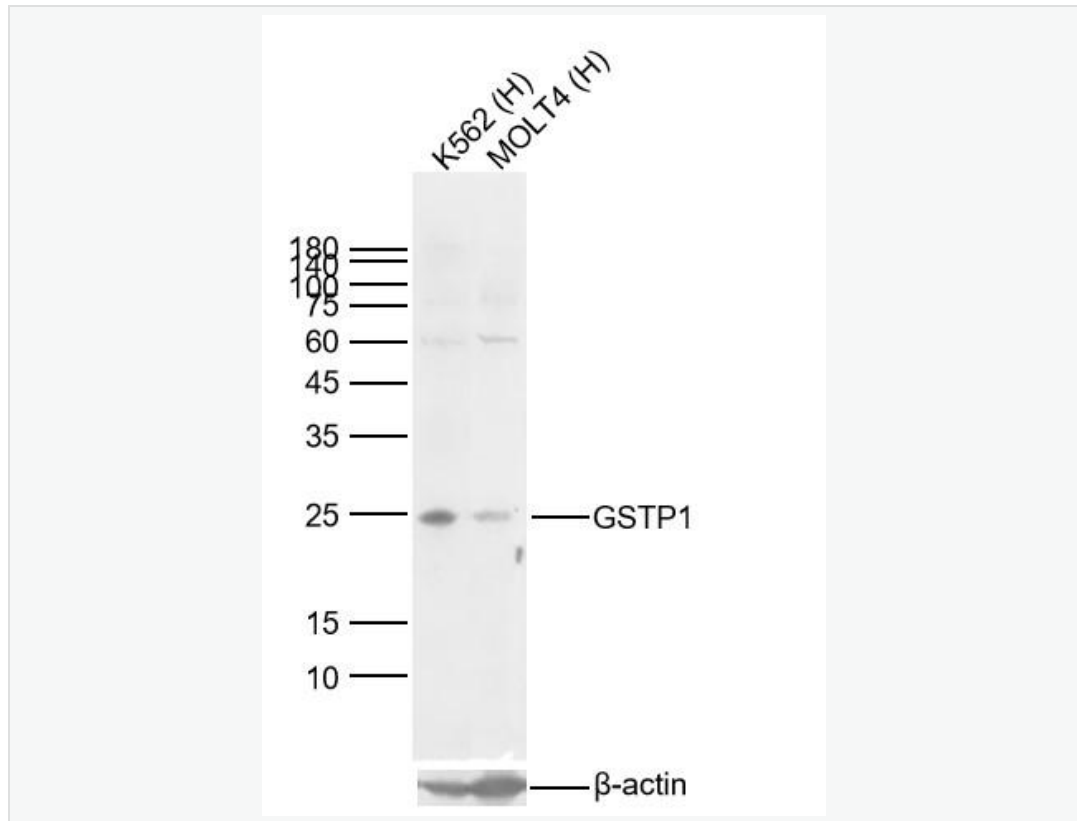
Lysate: 1: Jurkat, 2: PC-3, 3: MOLT-4, 4: K562

Protein loading quantity: 20  $\mu$ g

Exposure time: 60 s

Predicted MW: 23 kDa

Observed MW: 23 kDa



Sample:

Lane 1: Human K562 cell Lysates

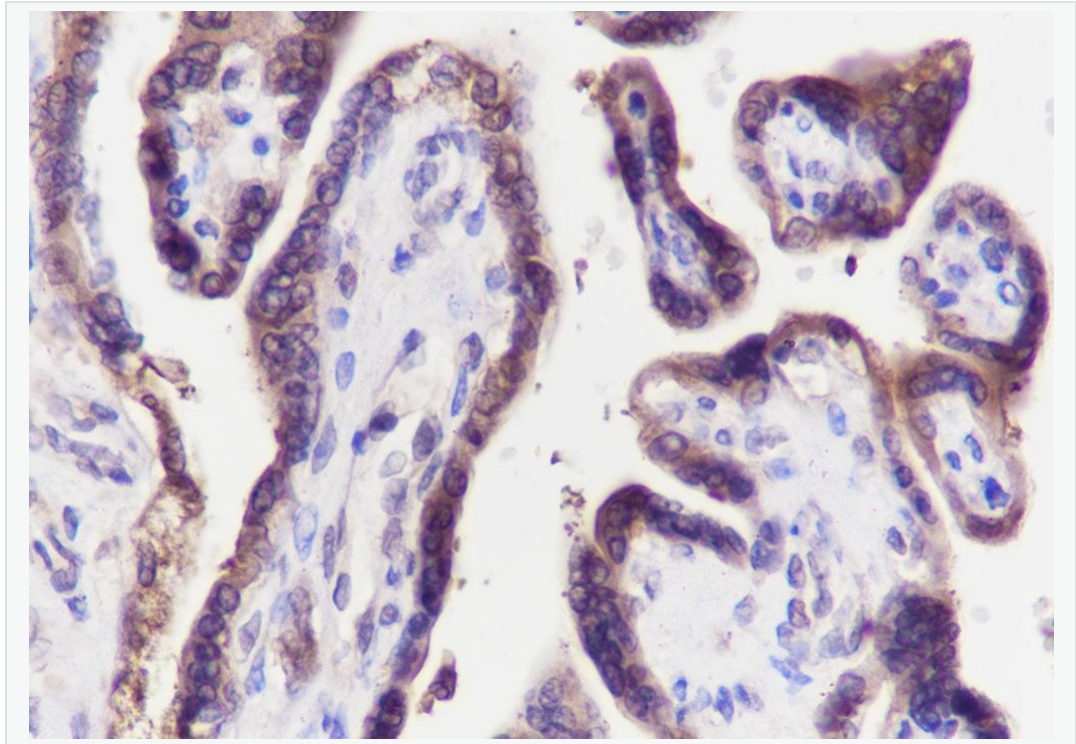
Lane 2: Human MOLT4 cell Lysates

Primary: Anti-GSTP1 (SLM-60581R) at 1/1000 dilution

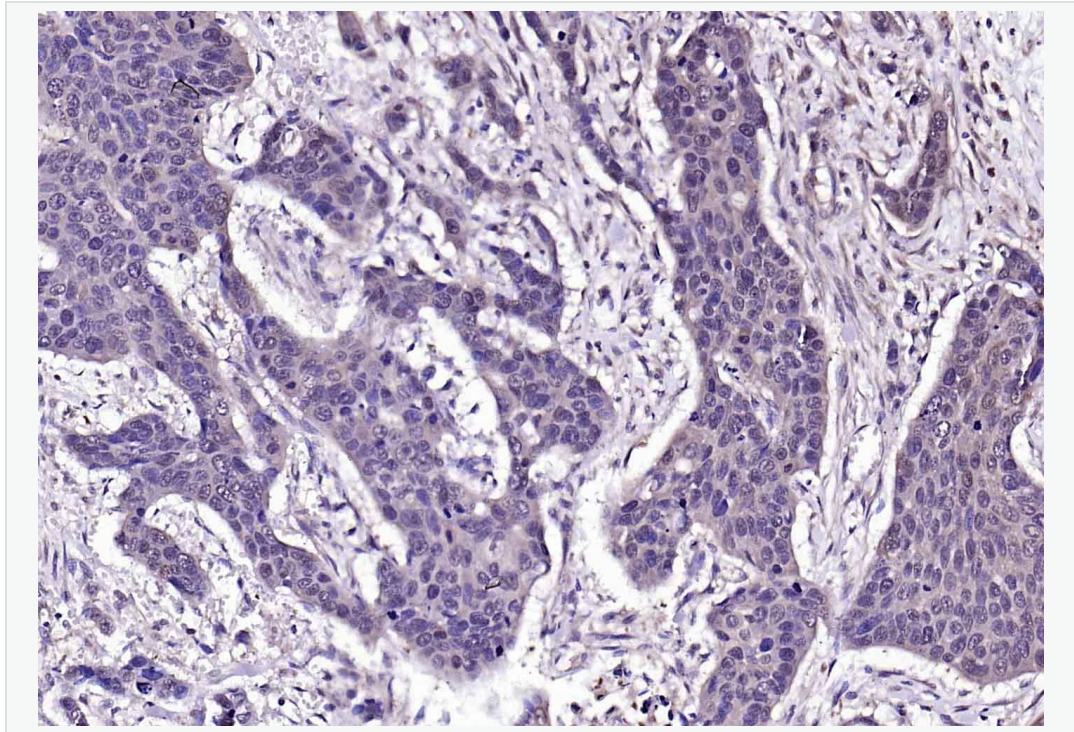
Secondary: IRDye800CW Goat Anti-Rabbit IgG at 1/20000 dilution

Predicted band size: 23kDa

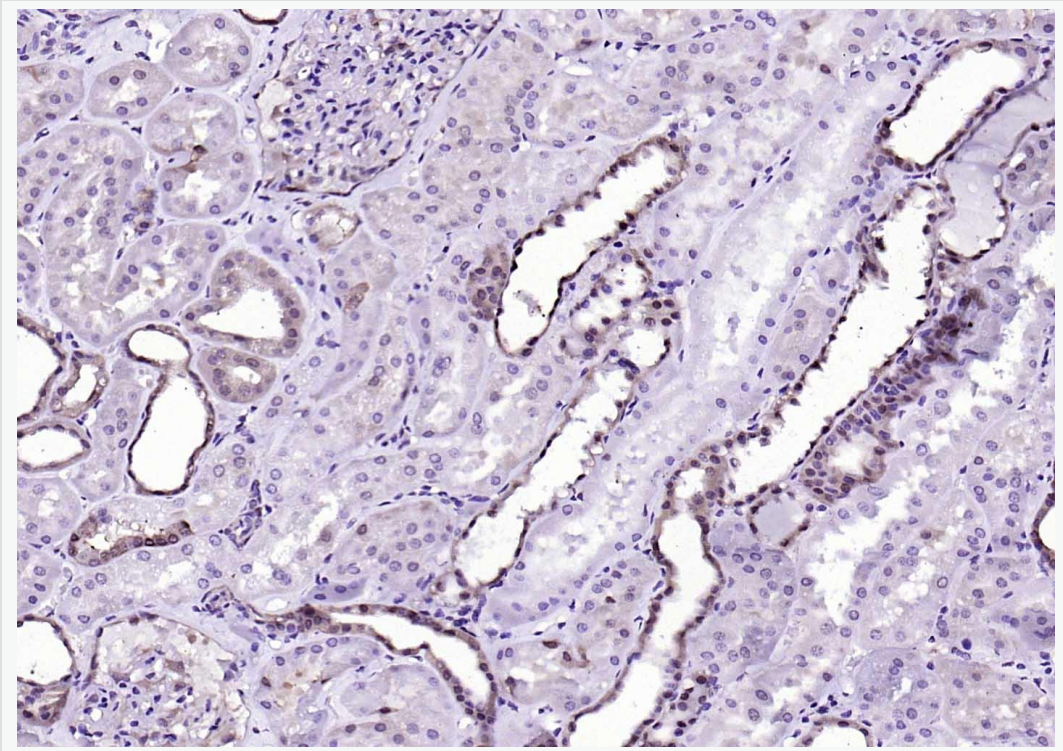
Observed band size: 23kDa



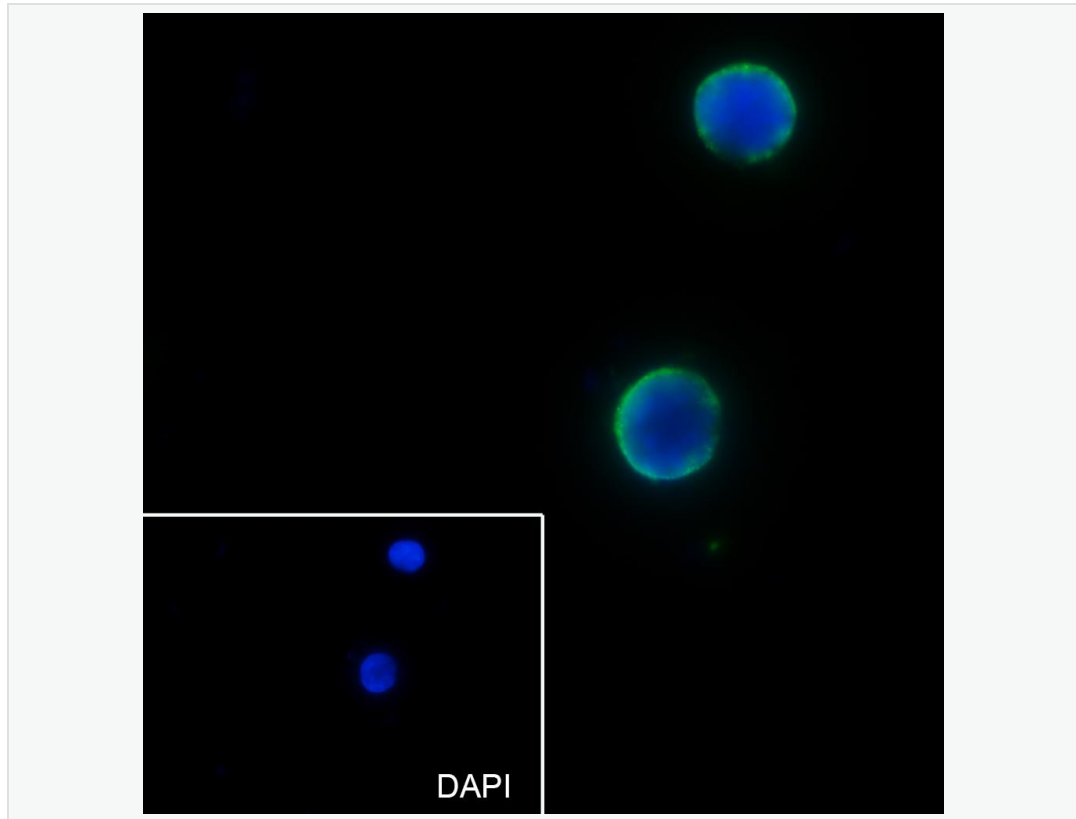
Tissue: Human placenta Section type: Formalin fixed & Paraffin -embedded section Retrieval method:  
High temperature and high pressure Retrieval buffer: Tris/EDTA buffer, pH 9.0 Primary ab dilution: 1:100  
Primary ab incubation condition: 1 hour at room temperature Secondary ab: SP Kit(Rabbit) (sp-0023)  
Counter stain: Hematoxylin (Blue) Comment: Color brown is the positive signal for SLM-60581R



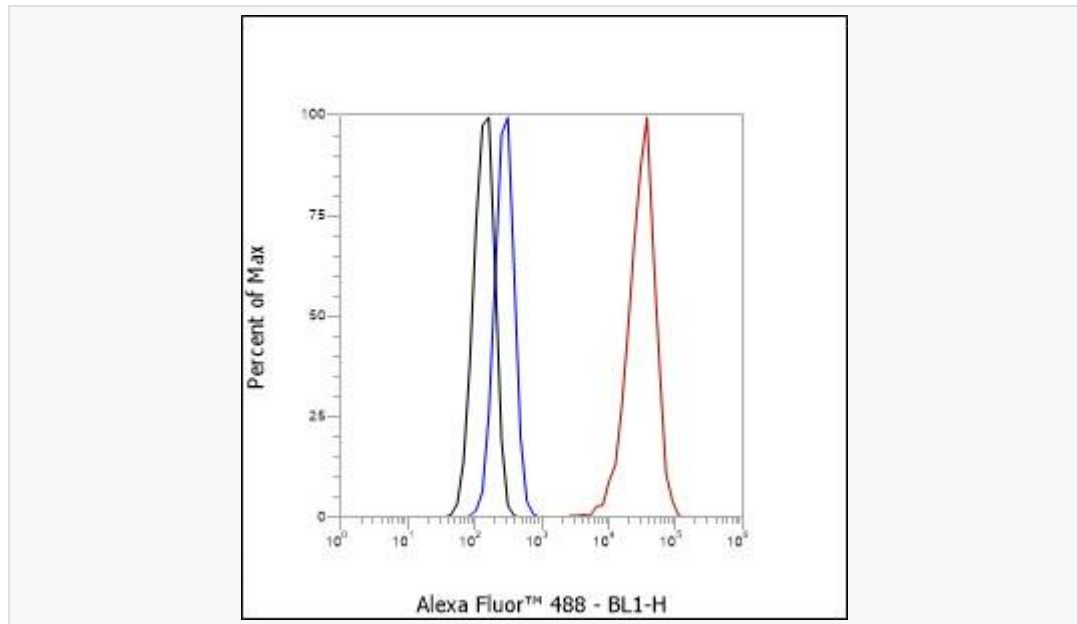
Paraformaldehyde-fixed, paraffin embedded (Human esophageal cancer); Antigen retrieval by boiling in sodium citrate buffer (pH6.0) for 15min; Block endogenous peroxidase by 3% hydrogen peroxide for 20 minutes; Blocking buffer (normal goat serum) at 37°C for 30min; Antibody incubation with (GSTP1) Monoclonal Antibody, Unconjugated (SLM-60581R) at 1:200 overnight at 4°C, followed by operating according to SP Kit(Rabbit) (sp-0023) instructions and DAB staining.



Paraformaldehyde-fixed, paraffin embedded (Human kidney); Antigen retrieval by boiling in sodium citrate buffer (pH6.0) for 15min; Block endogenous peroxidase by 3% hydrogen peroxide for 20 minutes; Blocking buffer (normal goat serum) at 37°C for 30min; Antibody incubation with (GSTP1) Monoclonal Antibody, Unconjugated (SLM-60581R) at 1:200 overnight at 4°C, followed by operating according to SP Kit(Rabbit) (sp-0023) instructions and DAB staining.



Cell line: K562 Fixative: 4% Paraformaldehyde Permeabilization: 0.1% TritonX-100 Primary ab dilution: 1:50 Primary incubation condition: 4°C overnight Secondary ab: Goat Anti-Rabbit IgG Nuclear counter stain: DAPI (Blue) Comment: Color green is the positive signal for SLM-60581R



Cell line: HepG2 Fixative: 4% Paraformaldehyde Permeabilization: 90% Methanol Primary Ab dilution: 1:100 Secondary Ab: Goat anti Rabbit IgG Unlabelled control: The cell without incubation with primary antibody and secondary antibody (Black line). Isotype control: Rabbit monoclonal IgG (Blue line).

Comment: Line red is the positive signal for SLM-60581R