

## Rabbit Anti-LHB antibody

SLM-60576R

**Product Name** LHB

**Chinese Name** 促黄体素  $\beta$  亚单位 Recombinant rabbit monoclonal anti

**Alias** LSHB\_HUMAN; Lutropin subunit beta; Lutropin beta chain; Luteinizing hormone subunit beta (LH-B; LSH-B; LH B; LSH-beta); CGB4; HH23;

**Immunogen Species** Rabbit

**Clonality** Monoclonal

**Clone NO.** E5C7

**React Species** Human,Rat(predicted:Mouse)

WB=1:500-2000,IHC-P=1:100-500,IHC-F=1:100-500,IF=1:100-500 (Paraffin sections need antigen repair)

**Applications** not yet tested in other applications.  
optimal dilutions/concentrations should be determined by the end user.

**Theoretical molecular weight** 16kDa

**Cellular localization** Secretory protein

**Form** Liquid

**Concentration** 1mg/ml

**Lsotype** IgG

**Purification** Affinity purified by Protein A

**Buffer Solution** 1M TBS(pH7.4) with 1% BSA, 3% Proclin300 and 50% Glycerol.

**Storage** Shipped at 4°C. Store at -20 °C for one year. Avoid repeated freeze/thaw cycles.

**Attention** This product as supplied is intended for research use only, not for use in human, therapeutic or diagnostic applications.

**PubMed** [PubMed](#)

**Product Detail** This gene is a member of the glycoprotein hormone beta chain family and encodes the beta subunit of luteinizing hormone (LH). Glycoprotein hormones are heterodimers consisting of a common alpha subunit and an unique beta subunit which confers biological specificity. LH is expressed in the pituitary gland and promotes spermatogenesis and ovulation by stimulating the

testes and ovaries to synthesize steroids. The genes for the beta chains of chorionic gonadotropin and for luteinizing hormone are contiguous on chromosome 19q13.3. Mutations in this gene are associated with hypogonadism which is characterized by infertility and pseudohermaphroditism. [provided by RefSeq, Jul 2008]

**SWISS:**  
P01229

**Gene ID:**  
3972

**Database links:**

[Entrez Gene: 3972](#) Human

[Entrez Gene: 16866](#) Mouse

[Entrez Gene: 25329](#) Rat

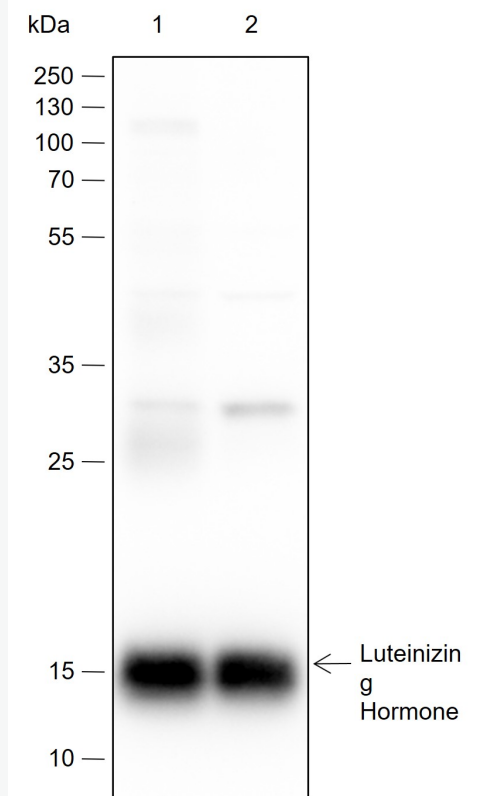
[SwissProt: P01229](#) Human

[SwissProt: O09108](#) Mouse

[SwissProt: P01230](#) Rat

通过刺激睾丸和卵巢合成类固醇来促进精子发生和排卵。

**Product  
Picture**



Blocking buffer: 5% NFDm/TBST

Primary ab dilution: 1:2000

Primary ab incubation condition: 2 hours at room temperature

Secondary ab: Goat Anti-Rabbit IgG H&L (HRP)

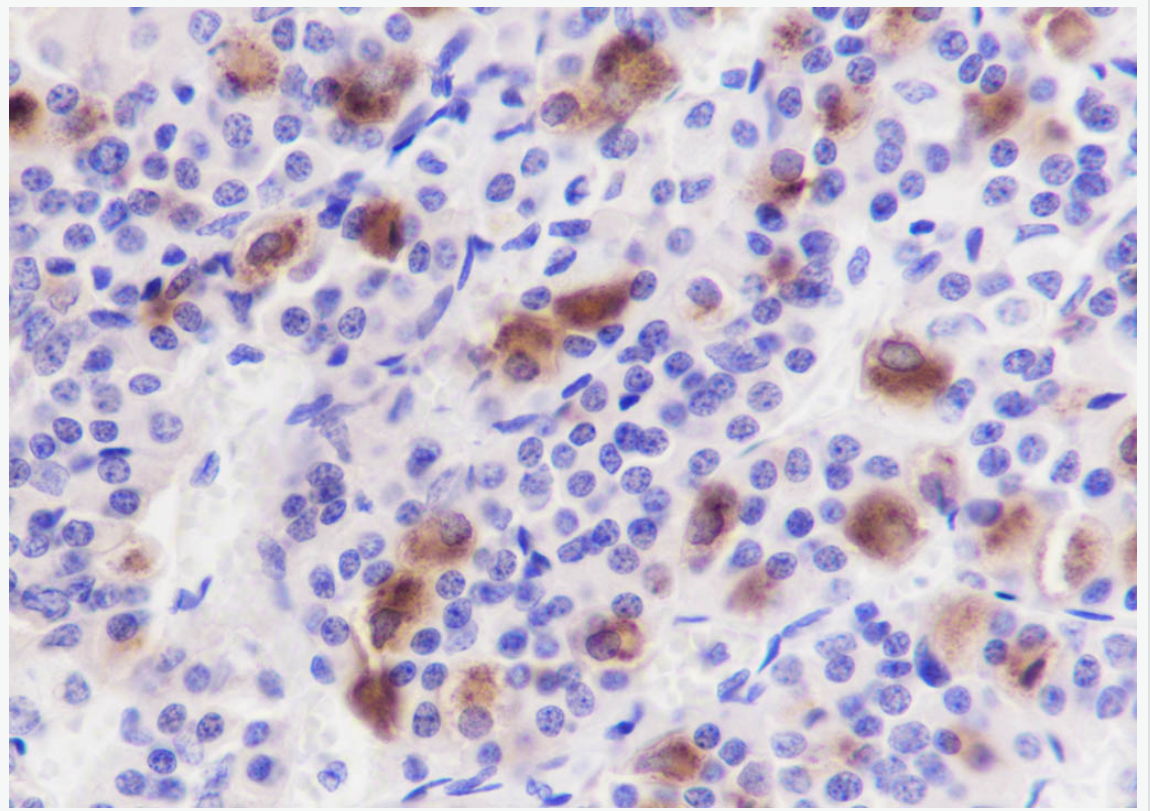
Lysate: 1: Rat pituitary, 2: Mouse pituitary

Protein loading quantity: 20  $\mu$ g

Exposure time: 10 s

Predicted MW: 15 kDa

Observed MW: 15 kDa



Tissue: Human pituitary

Section type: Formalin fixed & Paraffin -embedded section

Retrieval method: High temperature and high pressure

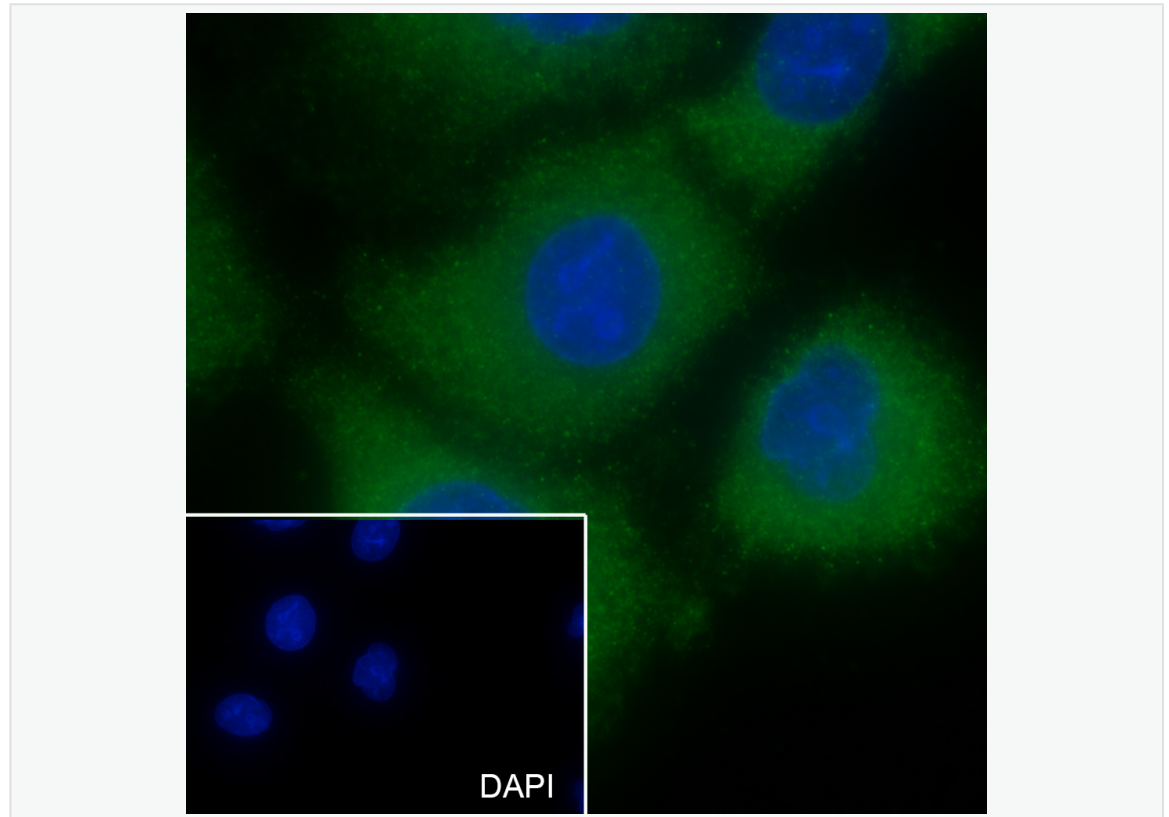
Retrieval buffer: Tris/EDTA buffer, pH 9.0 Primary ab dilution: 1:1000

Primary ab incubation condition: 1 hour at room temperature

Secondary ab: SP Kit(Rabbit) (sp-0023)

Counter stain: Hematoxylin (Blue)

Comment: Color brown is the positive signal for SLM-60576R



Cell line: PANC-1

Fixative: 100% Ice-cold methanol

Permeabilization: 0.1% TritonX-100

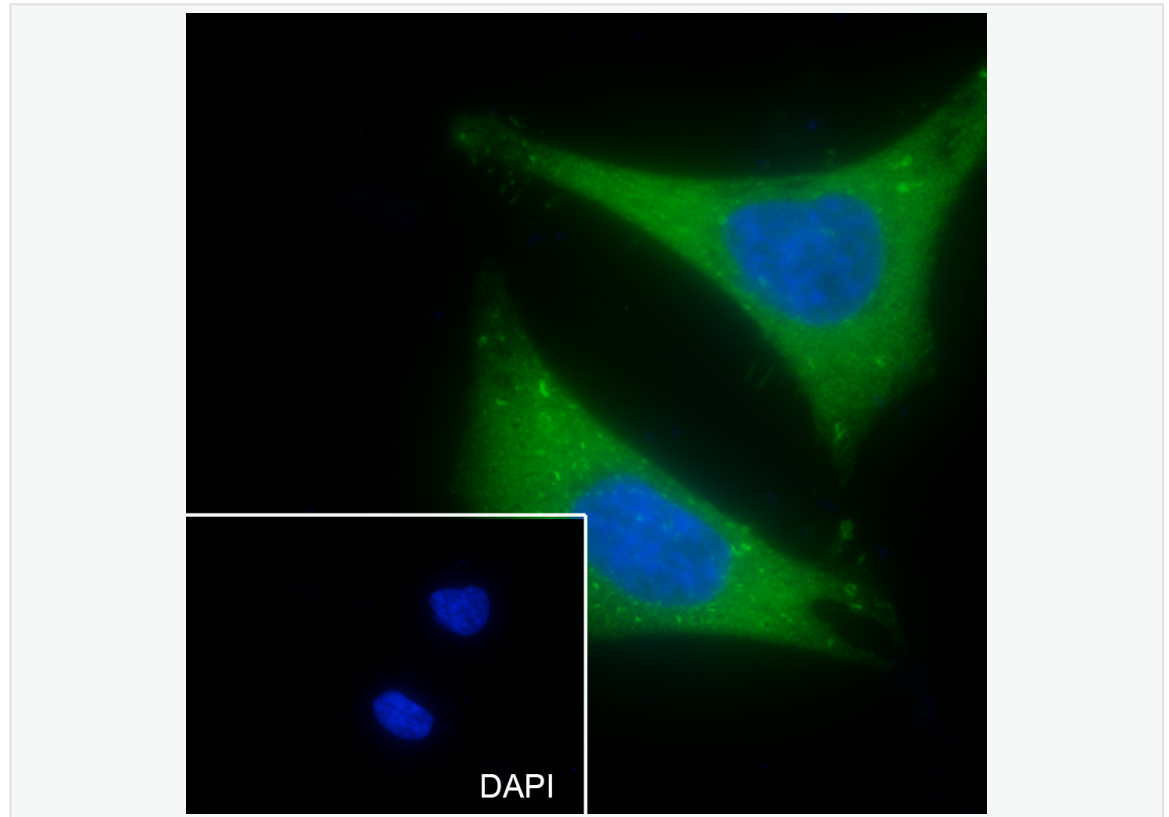
Primary ab dilution: 1:50

Primary incubation condition: 4°C overnight

Secondary ab: Goat Anti-Rabbit IgG

Nuclear counter stain: DAPI (Blue)

Comment: Color green is the positive signal for SLM-60576R



Cell line: HeLa

Fixative: 4% Paraformaldehyde

Permeabilization: 0.1% TritonX-100

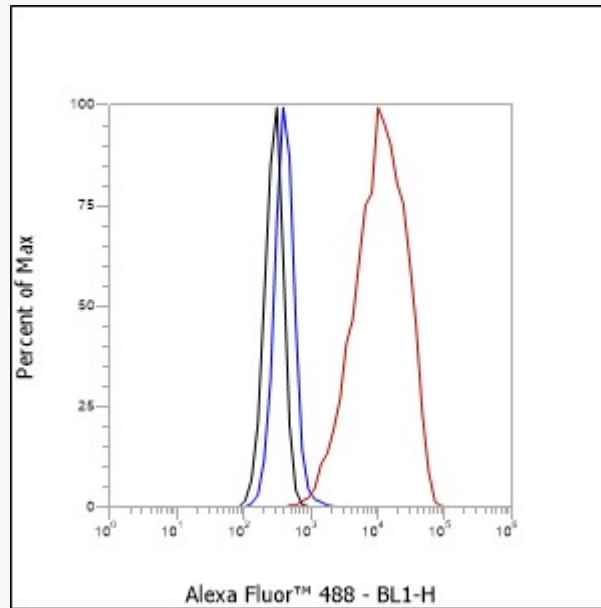
Primary ab dilution: 1:50

Primary incubation condition: 4°C overnight

Secondary ab: Goat Anti-Rabbit IgG

Nuclear counter stain: DAPI (Blue)

Comment: Color green is the positive signal for SLM-60576R



Cell line: HeLa

Fixative: 4% Paraformaldehyde

Permeabilization: 90% Methanol

Primary ab dilution: 1:100

Secondary ab: Goat anti Rabbit IgG

Unlabelled control: The cell without incubation with primary antibody and secondary antibody (Black line).

Isotype control: Rabbit monoclonal IgG (Blue line).

Comment: Line red is the positive signal for SLM-60576R