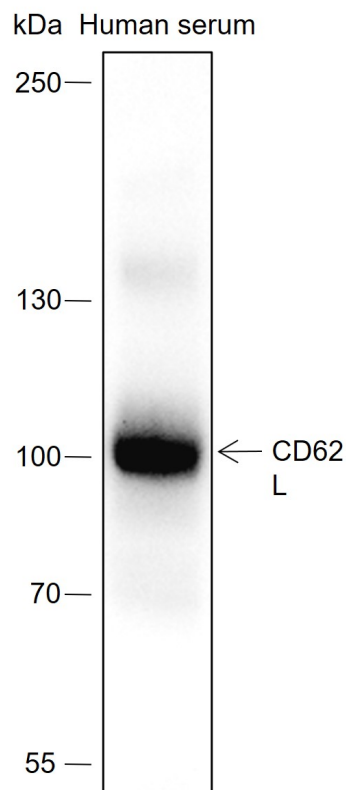


Rabbit Anti-CD62L antibody

SLM-60575R

Product Name	CD62L
Chinese Name	
Immunogen Species	Rabbit
Clonality	Monoclonal
Clone NO.	G3B6
React Species	Human
Applications	WB=1:500-1000,ICC/IF=1:100-500,Flow-Cyt=1:50 not yet tested in other applications. optimal dilutions/concentrations should be determined by the end user.
Cellular localization	cytoplasmic
Form	Liquid
Concentration	1mg/ml
Lsotype	IgG
Purification	Affinity purified by Protein A
Buffer Solution	1M TBS(pH7.4) with 1% BSA, 3% Proclin300 and 50% Glycerol.
Storage	Shipped at 4°C. Store at -20 °C for one year. Avoid repeated freeze/thaw cycles.
Attention	This product as supplied is intended for research use only, not for use in human, therapeutic or diagnostic applications.
PubMed	PubMed
Product Detail	钙依赖性凝集素通过与邻近细胞上的 glycoprotein 结合来介导细胞粘附。介导 lymphocyte 与外周淋巴结高内皮微静脉 endothelial cells 的粘附。促进 endothelial cells 中白细胞的初始束缚和滚动。

Product Picture



Blocking buffer: 5% NFDm/TBST

Primary Ab dilution: 1:1000

Primary Ab incubation condition: 2 hours at room temperature

Secondary Ab: Goat Anti-Rabbit IgG H&L (HRP)

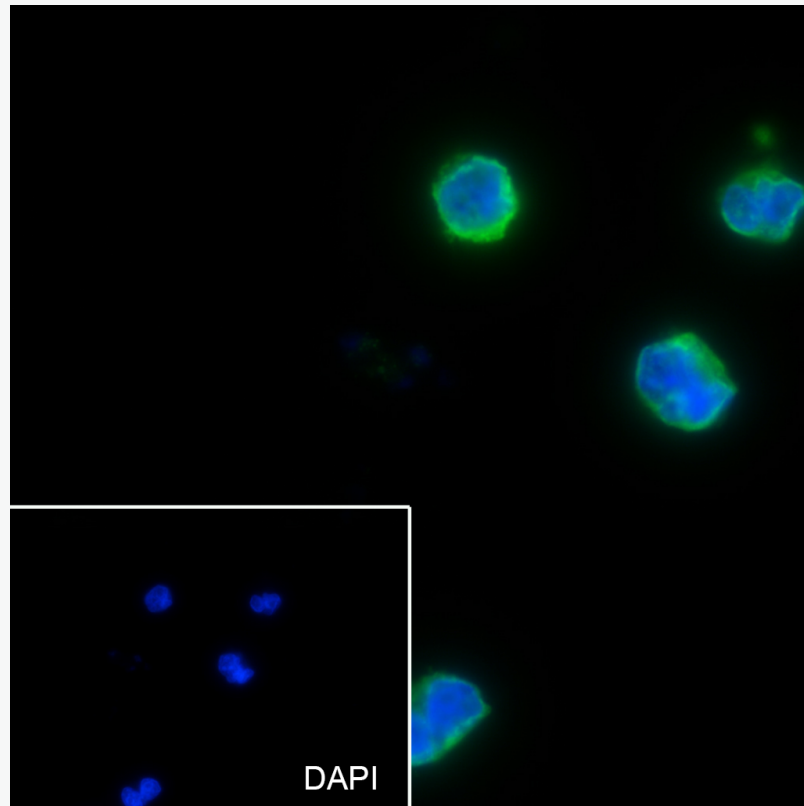
Lysate: Human serum

Protein loading quantity: 20 μ g

Exposure time: 30 s

Predicted MW: 42 kDa

Observed MW: 100 kDa



Cell line: Raji

Fixative: 4% Paraformaldehyde

Permeabilization: 0.1% TritonX-100

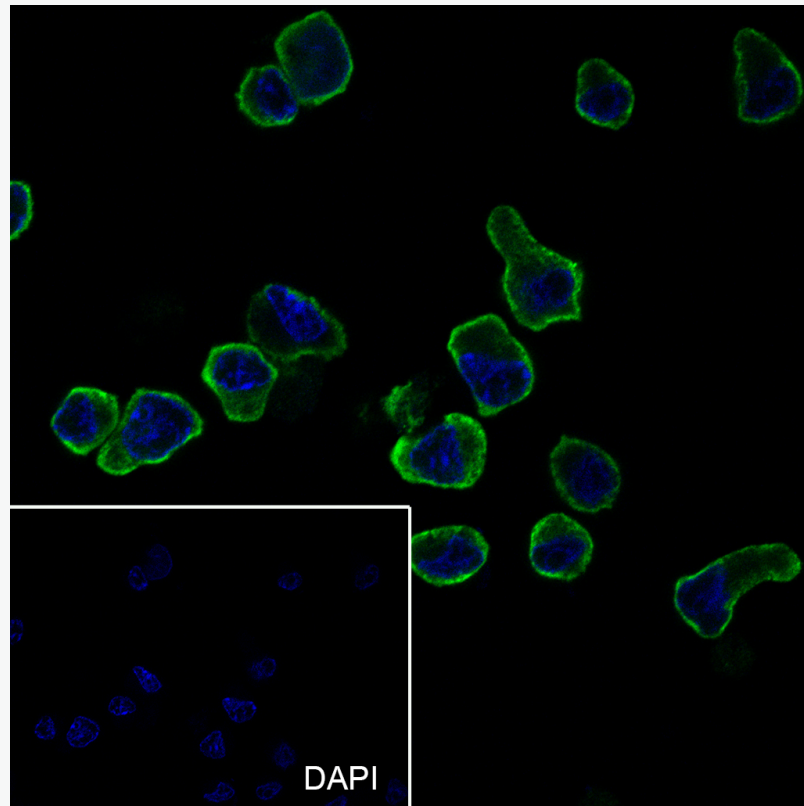
Primary ab dilution: 1:50

Primary incubation condition: 4°C overnight

Secondary ab: Goat Anti-Rabbit IgG

Nuclear counter stain: DAPI (Blue)

Comment: Color green is the positive signal for SLM-60575R



Cell line: EL4

Fixation: 4% Paraformaldehyde

Permeabilization: 0.1% TritonX-100

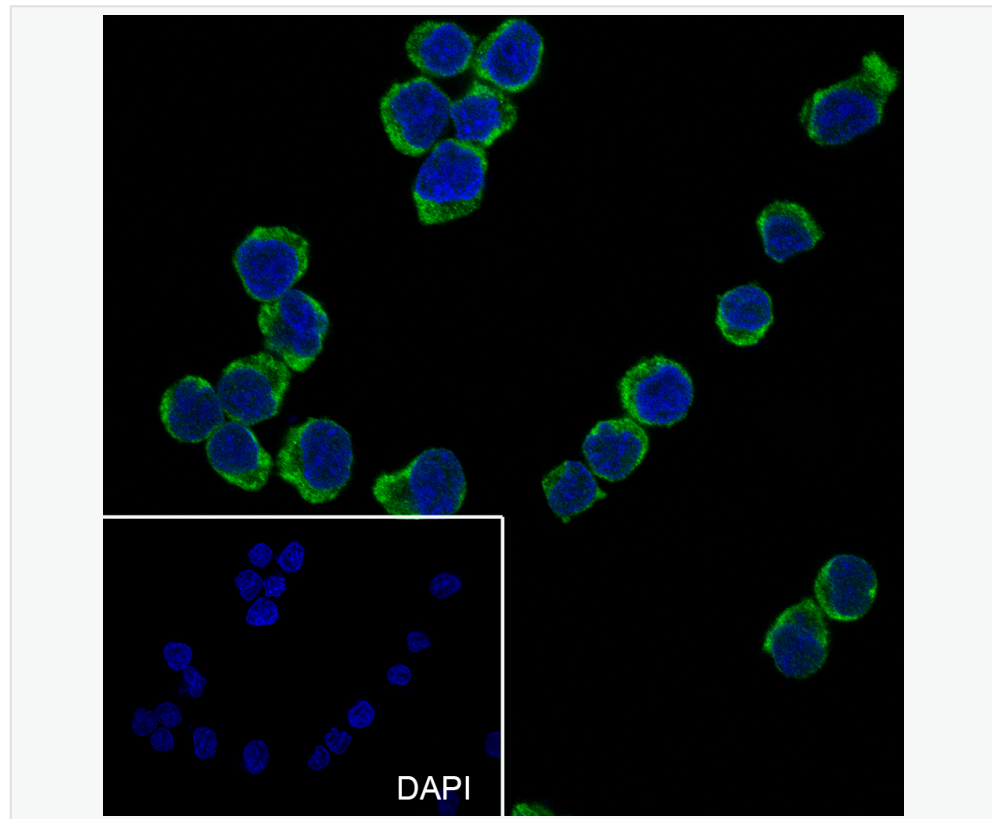
Primary Ab dilution: 1:50

Primary Ab incubation condition: 4°C overnight

Secondary Ab: Goat Anti-Rabbit IgG

Nuclear counter stain: DAPI (Blue)

Comment: Color green is the positive signal for SLM-60575R



Cell line: Ramos

Fixation: 4% Paraformaldehyde

Permeabilization: 0.1% TritonX-100

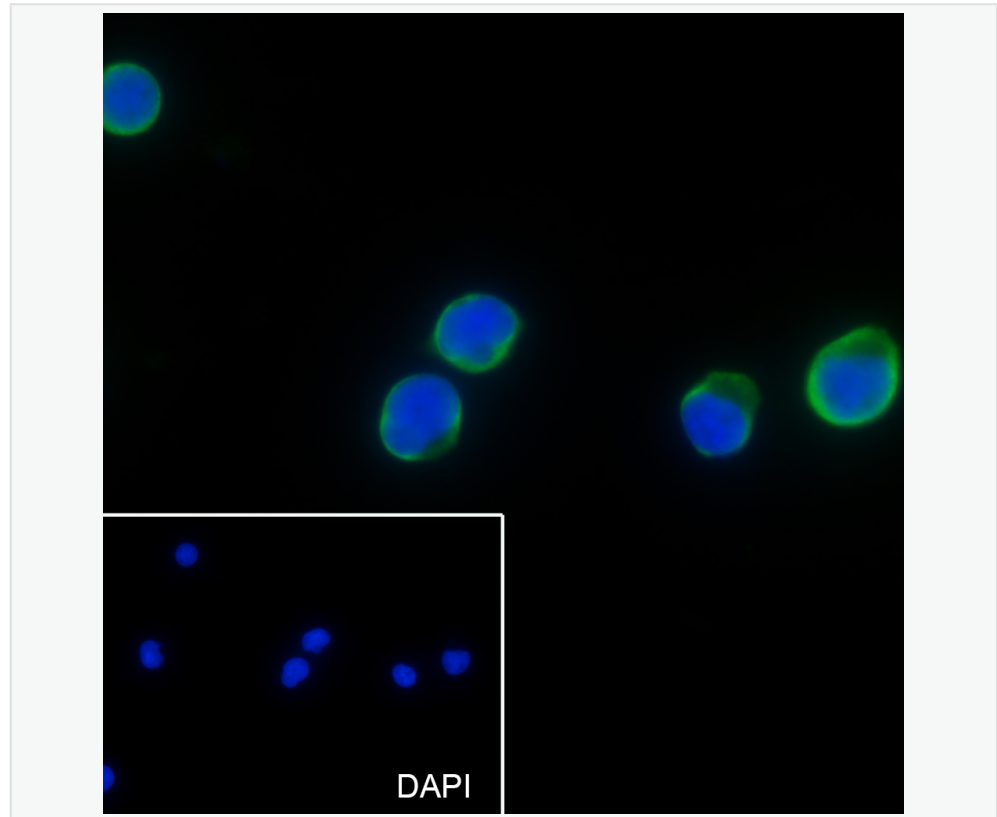
Primary Ab dilution: 1:50

Primary Ab incubation condition: 4°C overnight

Secondary Ab: Goat Anti-Rabbit IgG

Nuclear counter stain: DAPI (Blue)

Comment: Color green is the positive signal for SLM-60575R



Cell line: Jurkat

Fixative: 4% Paraformaldehyde

Permeabilization: 0.1% TritonX-100

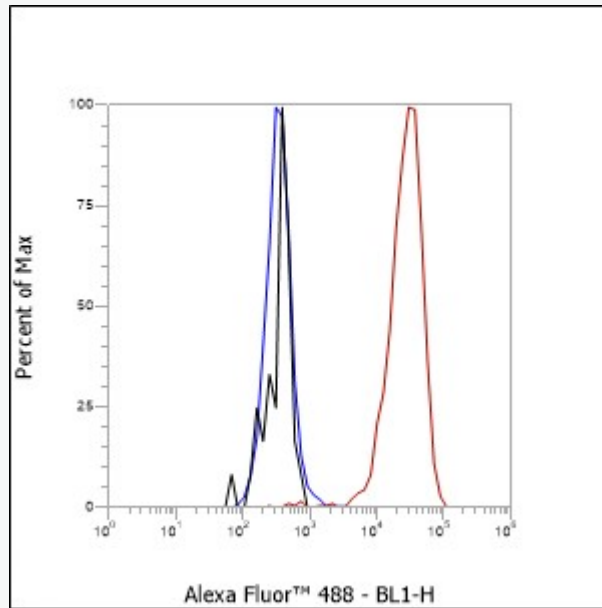
Primary ab dilution: 1:50

Primary incubation condition: 4°C overnight

Secondary ab: Goat Anti-Rabbit IgG

Nuclear counter stain: DAPI (Blue)

Comment: Color green is the positive signal for SLM-60575R



Cell line: PBMC

Fixative: 4% Paraformaldehyde

Permeabilization: 0.1% TritonX-100

Primary ab dilution: 1:50

Secondary ab: Goat anti Rabbit IgG

Unlabelled control: The cell without incubation with primary antibody and secondary antibody (Black line).

Isotype control: Rabbit monoclonal IgG (Blue line).

Comment: Line red is the positive signal for SLM-60575R