

## Rabbit Anti-PSMA1 antibody

SLM-60572R

**Product Name** PSMA1

**Chinese Name**

**Immunogen Species** Rabbit

**Clonality** Monoclonal

**Clone NO.** C12B5

**React Species** Human,Mouse,Rat

**Applications** WB=1:500-2000,ICC/IF=1:50-200,Flow-Cyt=1:50-100,IHC-P=1:100-500,IHC-F=1:100-500,IF  
not yet tested in other applications.  
optimal dilutions/concentrations should be determined by the end user.

**Cellular localization** The nucleus The cell membrane

**Form** Liquid

**Concentration** 1mg/ml

**Lsotype** IgG/Kappa

**Purification** Affinity purified by Protein A

**Buffer Solution** 1M TBS(pH7.4) with 1% BSA, 3% Proclin300 and 50% Glycerol.

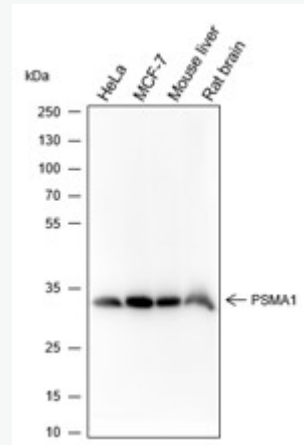
**Storage** Shipped at 4°C. Store at -20 °C for one year. Avoid repeated freeze/thaw cycles.

**Attention** This product as supplied is intended for research use only, not for use in human, therapeutic or diagnostic applications.

**PubMed** [PubMed](#)

**Product Detail**

参与大多数细胞内蛋白质水解降解的 20S 核心蛋白酶体复合体的成分。这种复合物通过与调节颗粒结合，在细胞内发挥许多重要作用。与两个 19S 调节颗粒结合，形成 26S 蛋白酶体。26S 蛋白酶体通过去除可能损害细胞功能的错误折叠蛋白质，以及去除不再需要功能的蛋白质，在维持蛋白质内稳态中发挥关键作用。与 PA28 相关，20S 蛋白酶体介导 Ubiquitin 非依赖性蛋白质降解。这种类型的蛋白水解在包括精子发生在内的几种途径中发挥关键作用。20S-PA200 复合物或产生 MHC I 类抗原肽（20S-PA28 复合物）子集在内的几种途径的。



## Product Picture

Blocking buffer: 5% NFDN/TBST

Primary ab dilution: 1:1000

Primary ab incubation condition: 2 hours at room temperature

Secondary ab: Goat Anti-Rabbit IgG H&L (HRP)

Lysate: HeLa, MCF-7, Mouse liver, Rat brain

Protein loading quantity: 20  $\mu$ g

Exposure time: 3 s

Predicted MW: 30 kDa

Observed MW: 30 kDa