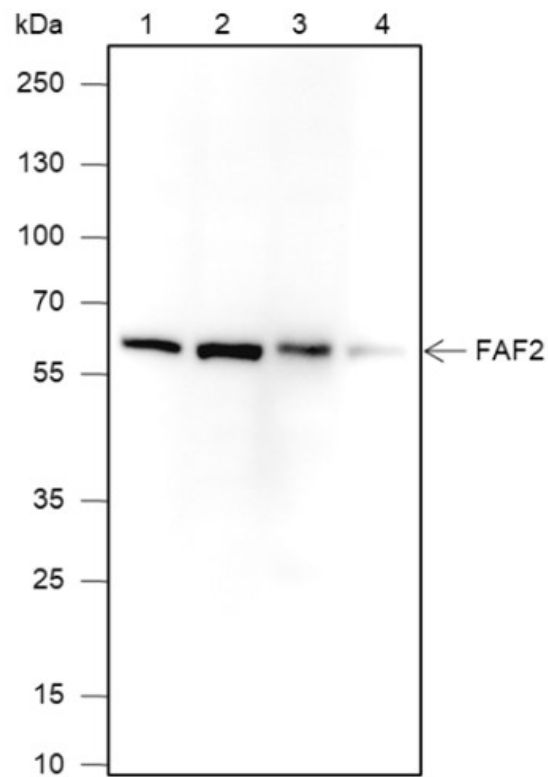


Mouse Anti-FAF2 antibody

SLM-60567M

Product Name	FAF2
Immunogen Species	Mouse
Clonality	Monoclonal
Clone NO.	A10F4.
React Species	Human(predicted:Mouse,Rat) WB=1:500-1000,IHC-P=1:50-200,IHC-F=1:50-200,ICC/IF=1:100-500,IF=1:50-200 (Paraffin sections need antigen repair)
Applications	not yet tested in other applications. optimal dilutions/concentrations should be determined by the end user.
Cellular localization	The cell membrane
Form	Liquid
Concentration	1mg/ml
Lsotype	IgG2B/Kappa
Purification	Affinity purified by Protein G
Buffer Solution	1M TBS(pH7.4) with 1% BSA, 3% Proclin300 and 50% Glycerol.
Storage	Shipped at 4°C. Store at -20 °C for one year. Avoid repeated freeze/thaw cycles.
Attention	This product as supplied is intended for research use only, not for use in human, therapeutic or diagnostic applications.
PubMed	PubMed
Product Detail	在内质网相关降解 (ERAD) 中起重要作用, 介导错误折叠内质网蛋白的 Ubiquitin 依赖性降解。通过控制 IGF1R 受体的稳态表达, 间接调控胰岛素样生长因子受体信号通路。通过与磷脂酶 PNPL2 结合抑制脂滴降解, 并通过促进 PNPL2 与其内源性激活剂 ABHD5 的分离抑制其活性, ABHD5 抑制三酰甘油水解速率。

**Product
Picture**



Blocking buffer: 5% NFDN/TBST

Primary Ab dilution: 1:1000

Primary Ab incubation condition: room temperature 2h

Secondary Ab: Goat Anti-Mouse IgG H&L (HRP)

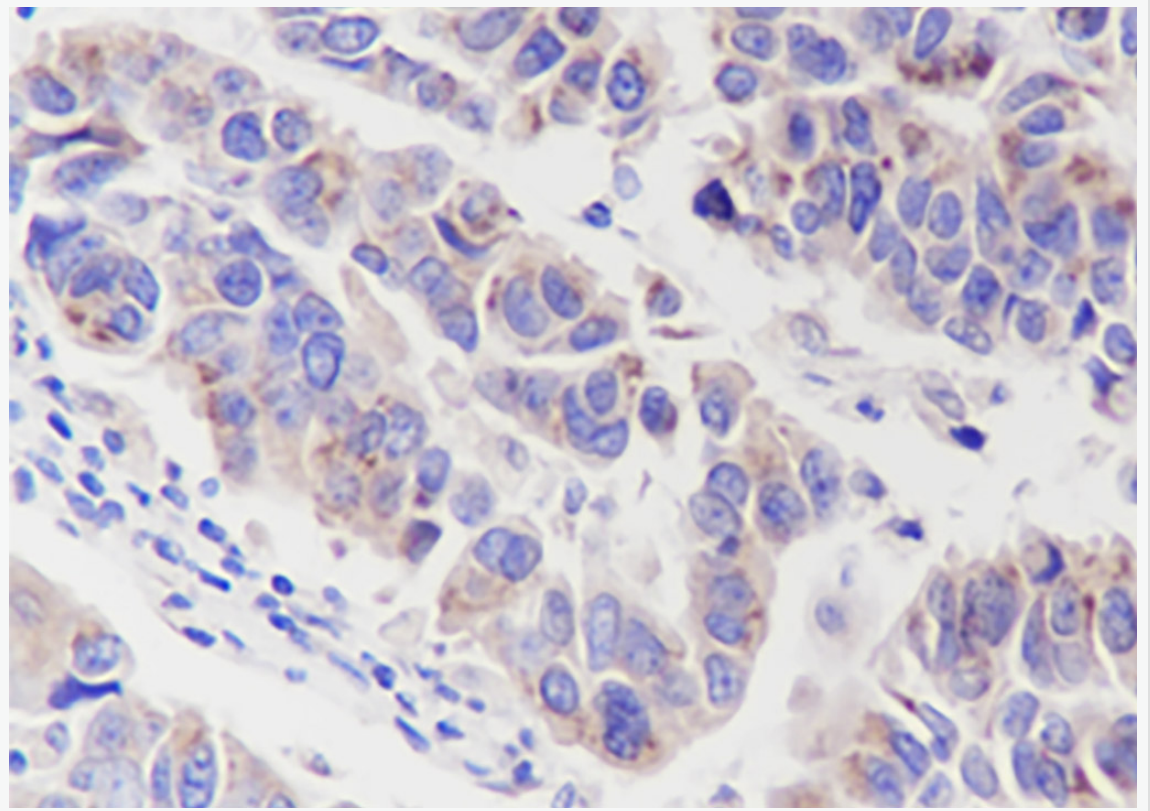
Lysate: 1: 293, 2: HepG2, 3: Mouse lung, 4: Rat liver

Protein loading quantity: 20 μ g

Exposure time: 60 s

Predicted MW: 51 kDa

Observed MW: 55 kDa



Tissue: Human breast cancer

Section type: Formalin fixed & Paraffin -embedded section

Retrieval method: High temperature and high pressure

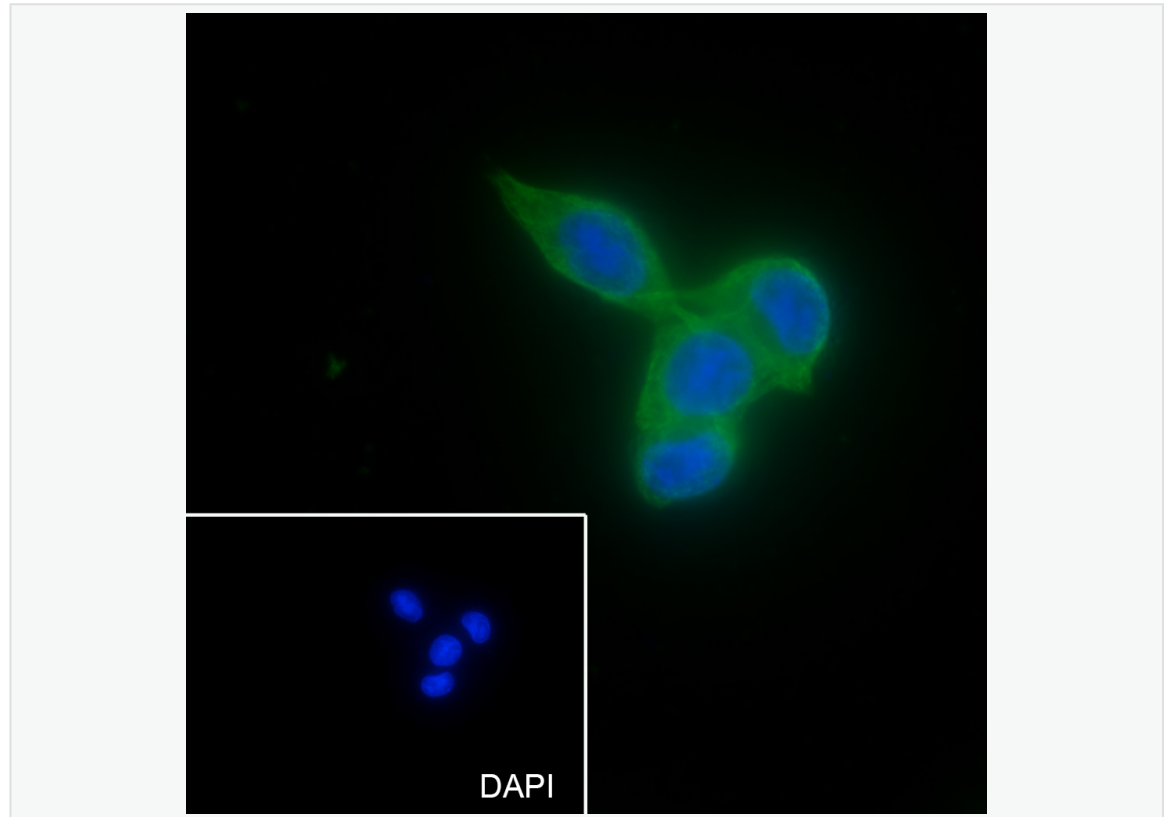
Retrieval buffer: Tris/EDTA buffer, pH 9.0 Primary Ab dilution: 1:100

Primary Ab incubation condition: 1 hour at room temperature

Secondary Ab: SP Kit(Mouse)(sp-0024)

Counter stain: Hematoxylin (Blue)

Comment: Color brown is the positive signal for SLM-60567M



Cell line: HepG2

Fixative: 100% Ice-cold methanol

Permeabilization: 0.1% TritonX-100

Primary Ab dilution: 1:50

Primary incubation condition: 4°C overnight

Secondary Ab: Goat Anti-Mouse IgG

Nuclear counter stain: DAPI (Blue)

Comment: Color green is the positive signal for SLM-60567M