

Mouse Anti-PCCB antibody

SLM-60566M

Product Name PCCB

Immunogen Species Mouse

Clonality Monoclonal

Clone NO. B10B10

React Species Human,Mouse,Rat

Applications WB=1:500-2000,IHC-P=1:50-200,IHC-F=1:50-200,IF=1:50-200 (Paraffin sections need antigen repair)
not yet tested in other applications.
optimal dilutions/concentrations should be determined by the end user.

Cellular localization The cell membrane

Form Liquid

Concentration 1mg/ml

Lsotype IgG2A/Kappa

Purification Affinity purified by Protein G

Buffer Solution 1M TBS(pH7.4) with 1% BSA, 3% Proclin300 and 50% Glycerol.

Storage Shipped at 4°C. Store at -20 °C for one year. Avoid repeated freeze/thaw cycles.

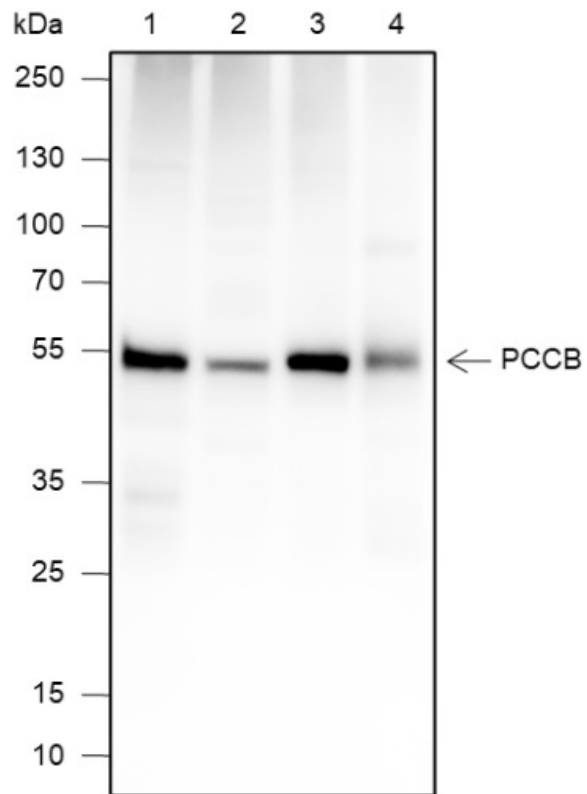
Attention This product as supplied is intended for research use only, not for use in human, therapeutic or diagnostic applications.

PubMed [PubMed](#)

Product Detail

这是生物素依赖性丙酰辅酶 a 羧化酶 (PCC) 的 2 个亚基之一, PCC 是一种 Mitochondrion 酶, 参与奇数链脂肪酸、支链氨基酸异亮氨酸、苏氨酸、蛋氨酸、缬氨酸和其他代谢物的分解代谢。丙酰辅酶 a 羧化酶催化丙酰辅酶 a/丙酰基辅酶 a 羧化为 D-甲基丙二酰辅酶 a/(S)-甲基丙二酰辅酶 a。在全酶中, α 亚基催化生物素羧载体 (BCC) 结构域携带的生物素的 ATP 依赖性羧化, 而 β 亚基随后将羧基从羧化生物素转移到丙酰辅酶 A。丙酰辅酶 a 羧化酶也显著作用于丁酰辅酶 a/丁酰辅酶 a, 其以更低的速率转化为乙基丙二酰辅酶 a/(2S)-乙基丙二酰辅酶 a。其他替代次要底物包括 (2E)-丁烯酰辅酶 A/巴豆酰辅酶 A。

**Product
Picture**



Blocking buffer: 5% NFDM/TBST

Primary Ab dilution: 1:1000

Primary Ab incubation condition: room temperature 2h

Secondary Ab: Goat Anti-Mouse IgG H&L (HRP)

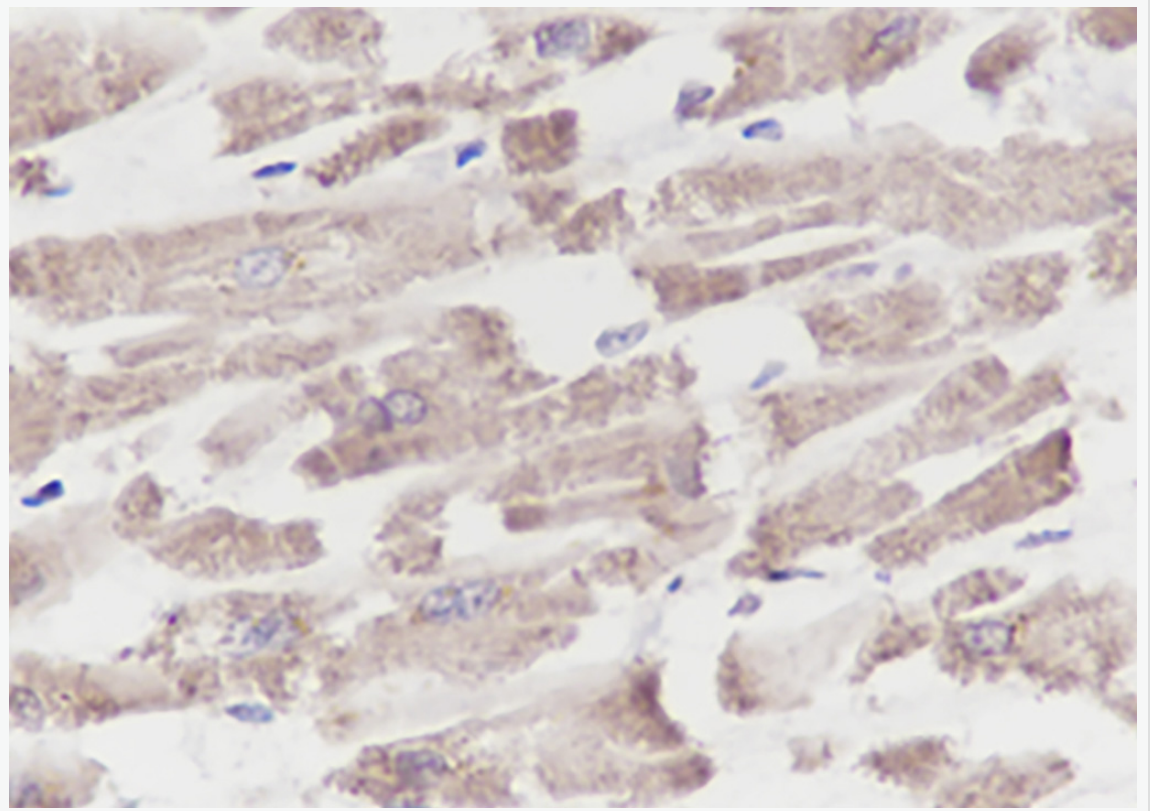
Lysate: 1: Human liver, 2: HepG2, 3: Rat liver, 4: Mouse heart

Protein loading quantity: 20 μ g

Exposure time: 30 s

Predicted MW: 58 kDa

Observed MW: 55 kDa



Tissue: Human heart

Section type: Formalin fixed & Paraffin -embedded section

Retrieval method: High temperature and high pressure

Retrieval buffer: Tris/EDTA buffer, pH 9.0 Primary Ab dilution: 1:100

Primary Ab incubation condition: 1 hour at room temperature

Secondary Ab: SP Kit(Mouse)(sp-0024)

Counter stain: Hematoxylin (Blue)

Comment: Color brown is the positive signal for SLM-60566M