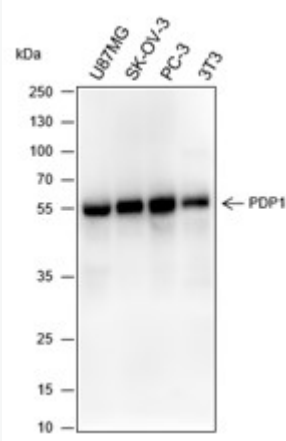


Rabbit Anti-PDP1 antibody

SLM-60565R

Product Name	PDP1
Chinese Name	
Immunogen Species	Rabbit
Clonality	Monoclonal
Clone NO.	F12B3
React Species	Human(predicted:Mouse,Rat) WB=1:500-1000,ICC/IF=1:100-500
Applications	not yet tested in other applications. optimal dilutions/concentrations should be determined by the end user.
Cellular localization	The cell membrane
Form	Liquid
Concentration	1mg/ml
Lsotype	IgG/Kappa
Purification	Affinity purified by Protein A
Buffer Solution	1M TBS(pH7.4) with 1% BSA, 3% Proclin300 and 50% Glycerol.
Storage	Shipped at 4°C. Store at -20 °C for one year. Avoid repeated freeze/thaw cycles.
Attention	This product as supplied is intended for research use only, not for use in human, therapeutic or diagnostic applications.
PubMed	PubMed
Product Detail	催化丙酮酸脱氢酶复合物 E1 组分的 α 亚单位的去磷酸化和伴随的再活化。



Product Picture

Blocking buffer: 5% NFDN/TBST

Primary ab dilution: 1:1000

Primary ab incubation condition: 2 hours at room temperature

Secondary ab: Goat Anti-Rabbit IgG H&L (HRP)

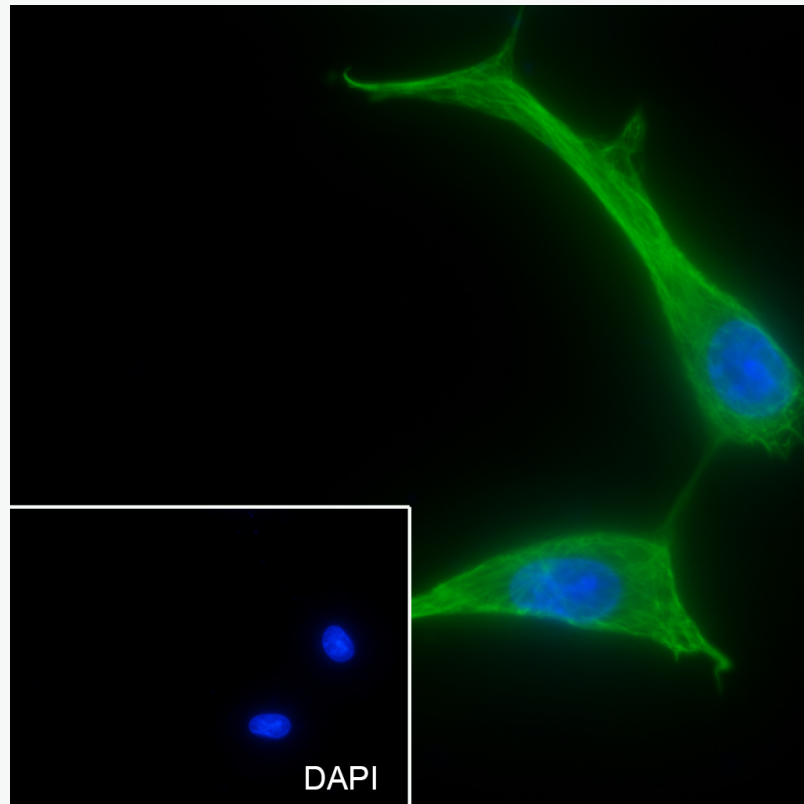
Lysate: U87MG, SK-OV-3, PC-3, 3T3

Protein loading quantity: 20 μ g

Exposure time: 60 s

Predicted MW: 55 kDa

Observed MW: 55 kDa



Cell line: U87-MG

Fixative: 100% Ice-cold methanol

Permeabilization: 0.1% TritonX-100

Primary ab dilution: 1:50

Primary incubation condition: 4°C overnight

Secondary ab: Goat Anti-Rabbit IgG

Nuclear counter stain: DAPI (Blue)

Comment: Color green is the positive signal for SLM-60565R