

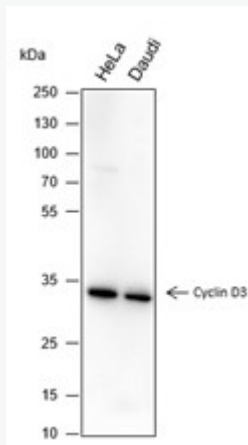
## Mouse Anti-Cyclin D3 antibody

SLM-60557M

<b>Product Name</b>	Cyclin D3
<b>Chinese Name</b>	
<b>Immunogen Species</b>	Mouse
<b>Clonality</b>	Monoclonal
<b>Clone NO.</b>	G12E5
<b>React Species</b>	Human,Rat
<b>Applications</b>	WB=1:500-1000,ICC/IF=1:100-500 not yet tested in other applications. optimal dilutions/concentrations should be determined by the end user.
<b>Cellular localization</b>	The nucleus cytoplasmic The cell membrane
<b>Form</b>	Liquid
<b>Concentration</b>	1mg/ml
<b>Lsotype</b>	IgG1/Kappa
<b>Purification</b>	Affinity purified by Protein G
<b>Buffer Solution</b>	1M TBS(pH7.4) with 1% BSA, 3% Proclin300 and 50% Glycerol.
<b>Storage</b>	Shipped at 4°C. Store at -20 °C for one year. Avoid repeated freeze/thaw cycles.
<b>Attention</b>	This product as supplied is intended for research use only, not for use in human, therapeutic or diagnostic applications.
<b>PubMed</b>	<a href="#">PubMed</a>

### Product Detail

CyclinD3-CDK4 (DC) 复合物的调节成分, 磷酸化和抑制视网膜母细胞瘤 (RB) 蛋白家族成员, 包括 RB1, 并在 G (1) /S 转换期间调节细胞周期。RB1 的磷酸化使转录因子 E2F 从 RB/E2F 复合物中分离出来, 并随后转录负责 G (1) 期进展的 E2F 靶基因。在早期 G (1) 期次磷酸化 RB1。CyclinD-CDK4 复合物是多种促有丝分裂和抗有丝分裂信号的主要整合子。也是 SMAD3 的底物, 以细胞周期依赖的方式磷酸化 SMAD3 并抑制其转录活性。CyclinD3/CDK4/CDKN1B 三元复合物的组成部分, 是 CyclinD-CDK4 复合物核易位和活性所必需的。



## Product Picture

Blocking buffer: 5% NFDN/TBST

Primary ab dilution: 1:1000

Primary ab incubation condition: room temperature 2h

Secondary ab: Goat Anti-Mouse IgG H&L (HRP)

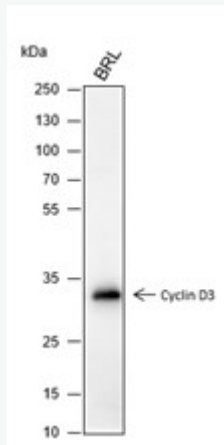
Lysate: HeLa, Daudi

Protein loading quantity: 20  $\mu$ g

Exposure time: 10 s

Predicted MW: 33 kDa

Observed MW: 33 kDa



Blocking buffer: 5% NFDN/TBST

Primary ab dilution: 1:1000

Primary ab incubation condition: room temperature 2h

Secondary ab: Goat Anti-Mouse IgG H&L (HRP)

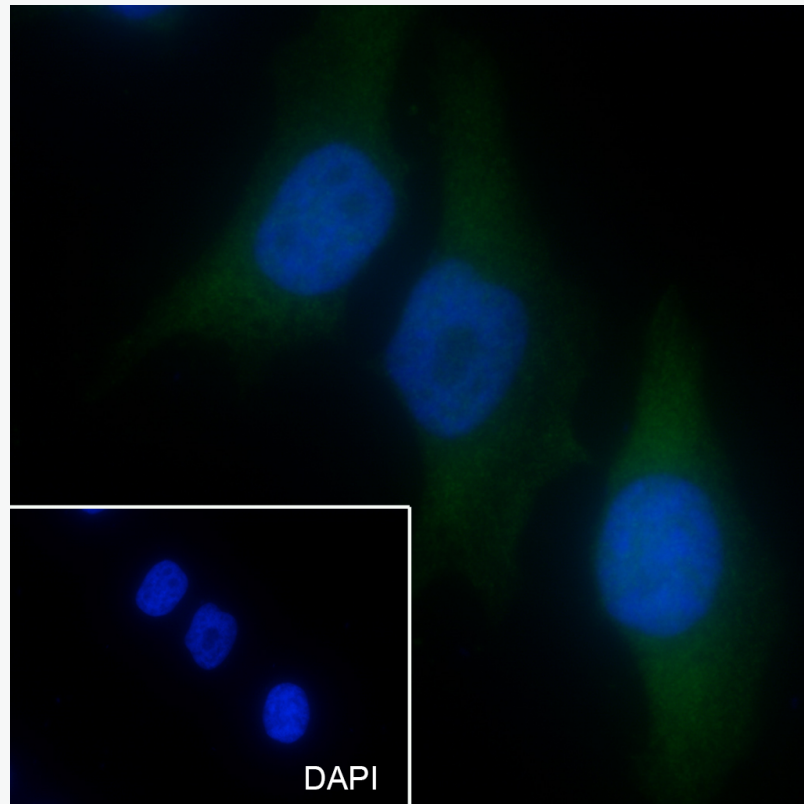
Lysate: BRL

Protein loading quantity: 20  $\mu$ g

Exposure time: 10 s

Predicted MW: 33 kDa

Observed MW: 33 kDa



Cell line: HeLa

Fixative: 4% Paraformaldehyde

Permeabilization: 0.1% TritonX-100

Primary ab dilution: 1:50

Primary incubation condition: 4°C overnight

Secondary ab: Goat Anti-Mouse IgG

Nuclear counter stain: DAPI (Blue)

Comment: Color green is the positive signal for SLM-60557M