

Mouse Anti-FIS1 antibody

SLM-60551M

Product Name FIS1

Chinese Name Mitochondrion 裂变 1 蛋白重组鼠单抗

Alias

CGI 135; CGI135; FIS 1; FIS1; Fis1 homolog; FIS1, *S. cerevisiae*, homolog of; FIS1_HUMAN; Fission 1 (mitochondrial outer membrane) homolog (*S. cerevisiae*); Fission 1 (mitochondrial outer membrane) homolog (yeast); Fission 1 (mitochondrial outer membrane) homolog; Fission 1 homolog; hFis 1 hFis1; Mitochondrial fission 1 protein; Tetratricopeptide repeat domain 11; Tetratricopeptide repeat protein 11; TPR repeat protein 11; TTC 11.

Research Area

Cell biology Apoptosis

Immunogen Species

Mouse

Clonality

Monoclonal

React Species

Human

Applications

WB=1:500-2000,ICC/IF=1:50-200 (Paraffin sections need antigen repair)
not yet tested in other applications.
optimal dilutions/concentrations should be determined by the end user.

Theoretical molecular weight

17kDa

Cellular localization

cytoplasmic

Form

Liquid

Concentration

1mg/ml

immunogen

KLH conjugated synthetic peptide derived from human FIS1

Lsotype

IgG1/Kappa

Purification

affinity purified by Protein G

Buffer Solution

1M TBS(pH7.4) with 1% BSA, 3% Proclin300 and 50% Glycerol.

Storage

Shipped at 4°C. Store at -20 °C for one year. Avoid repeated freeze/thaw cycles.

Attention

This product as supplied is intended for research use only, not for use in human,

therapeutic or diagnostic applications.

PubMed

[PubMed](#)

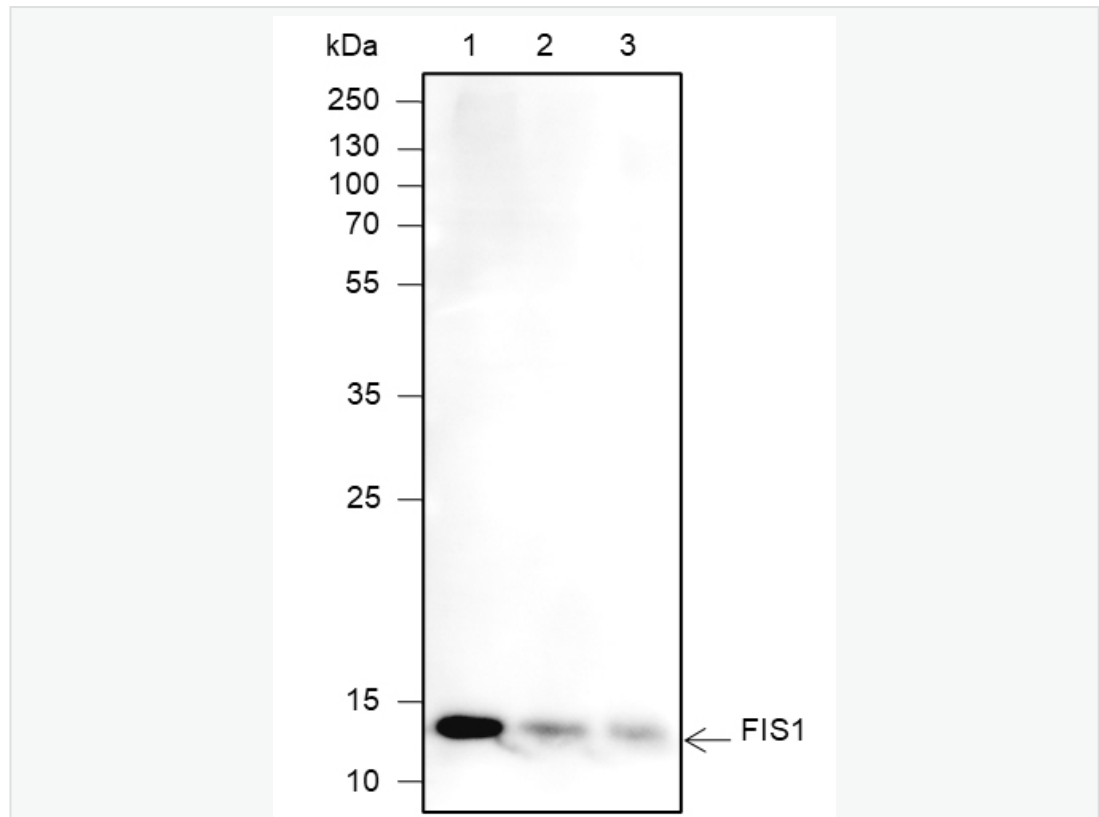
The balance between fission and fusion regulates the morphology of mitochondria. TTC11 is a component of a mitochondrial complex that promotes mitochondrial fission (James et al., 2003 [PubMed 12783892]).[supplied by OMIM, Mar 2008]

Product Detail

SWISS:
Q9Y3D6

Gene ID:
51024

Product Picture



Blocking buffer: 5% NFDm/TBST

Primary Ab dilution: 1:1000

Primary Ab incubation condition: room temperature 2h

Secondary Ab: Goat Anti-Mouse IgG H&L (HRP)

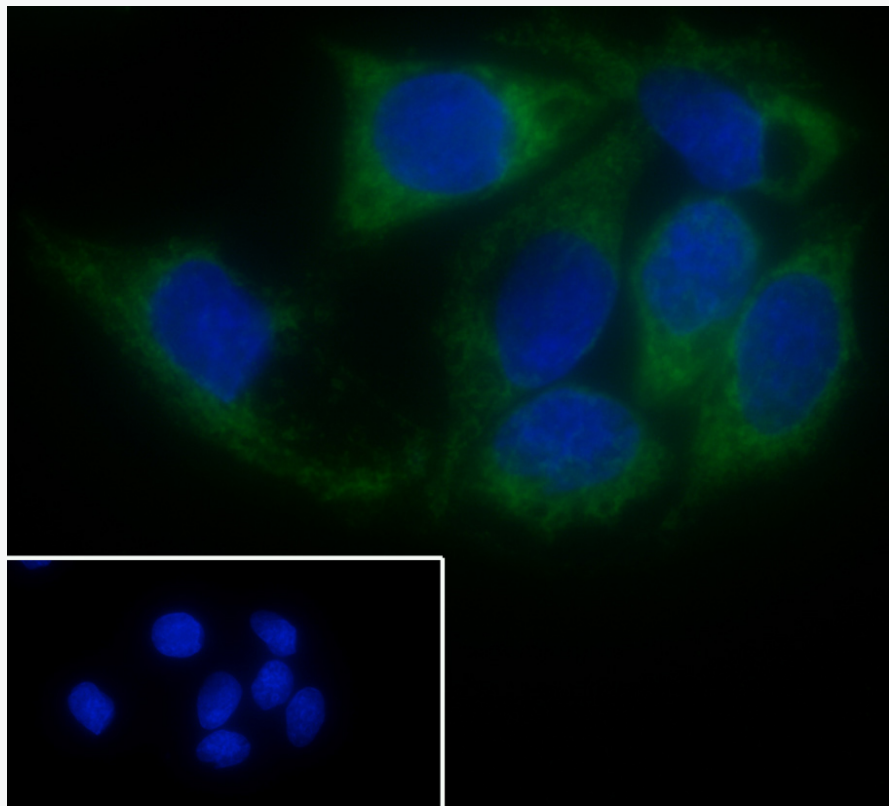
Lysate: 1: MCF-7, 2: T47D, 3: MDA-MB-231

Protein loading quantity: 20 μ g

Exposure time: 60 s

Predicted MW: 15 kDa

Observed MW: 15 kDa

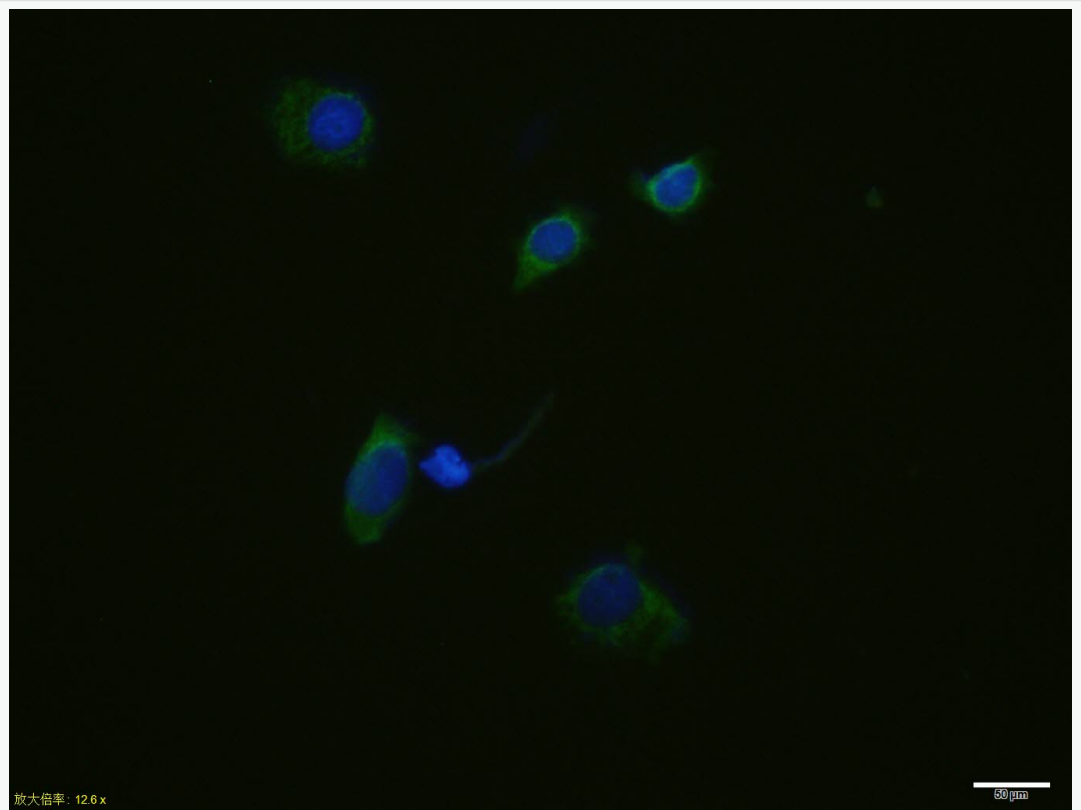


Cell line: HepG2 Fixative: 4% Paraformaldehydel Permeabilization: 0.1%

TritonX-100 Primary Ab dilution: 1:50 Primary incubation condition: 4°C

overnight Secondary Ab: Goat Anti-Mouse IgG Nuclear counter stain: DAPI

(Blue) Comment: Color green is the positive signal for SLM-60551M



HepG2 cell; 4% Paraformaldehyde-fixed; Triton X-100 at room temperature for 20 min; Blocking buffer (normal goat serum, C-0005) at 37°C for 20 min; Antibody incubation with (FIS1) monoclonal Antibody, Unconjugated (SLM-60551M) 1:100, 90 minutes at 37°C; followed by a conjugated Goat Anti-Mouse IgG antibody at 37°C for 90 minutes, DAPI (blue, C02-04002) was used to stain the cell nuclei.