

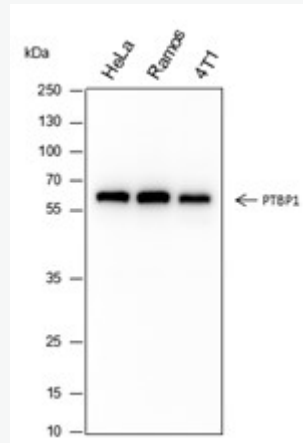


Rabbit Anti-PTBP1 antibody

SLM-60550R

Product Name PTBP1**Chinese Name****Immunogen Species** Rabbit**Clonality** Monoclonal**Clone NO.** C1F6**React Species** Human,Mouse,Rat**Applications** WB=1:1000-5000,Flow-Cyt=1:50-100,ICC/IF=1:50-200,IHC-P=1:100-500,IHC-F=1:100-500,I
not yet tested in other applications.
optimal dilutions/concentrations should be determined by the end user.**Cellular localization** The nucleus**Form** Liquid**Concentration** 1mg/ml**Lsotype** IgG/Kappa**Purification** Affinity purified by Protein A**Buffer Solution** 1M TBS(pH7.4) with 1% BSA, 3% Proclin300 and 50% Glycerol.**Storage** Shipped at 4°C. Store at -20 °C for one year. Avoid repeated freeze/thaw cycles.**Attention** This product as supplied is intended for research use only, not for use in human, therapeutic or d
applications.**PubMed** [PubMed](#)**Product Detail**

在 mRNA 前体剪接和选择性剪接事件的调控中发挥作用。在肌肉 Cell differentiation 过程
前体 mRNA 的外显子跳跃。与内含子的多嘧啶束结合。当与同一前体 mRNA 中的两个单
束结合时,可能促进 RNA 循环。可能促进 U2-snRNP 与 premrna 的结合。在 TPM1 前体
过程中与 RAVR1 协同调节相互排斥的外显子之间的转换。抑制 MAPT/Tau 外显子 10 的
核糖核酸病毒感染的情况下,与病毒内部核糖体进入位点(IRES)结合并刺激 IRES 介导



Product Picture

Blocking buffer: 5% NFDN/TBST

Primary ab dilution: 1:1000

Primary ab incubation condition: 2 hours at room temperature

Secondary ab: Goat Anti-Rabbit IgG H&L (HRP)

Lysate: HeLa, Ramos, 4T1

Protein loading quantity: 20 μ g

Exposure time: 30 s

Predicted MW: 57 kDa

Observed MW: 57 kDa