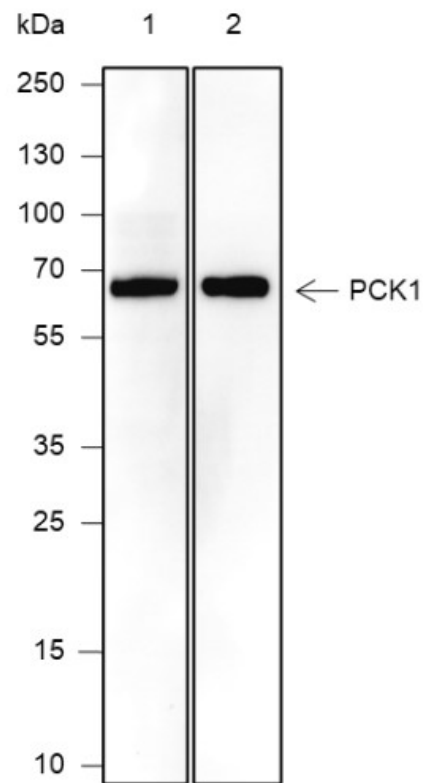


## Mouse Anti-PCK1 antibody

SLM-60549M

<b>Product Name</b>	PCK1
<b>Chinese Name</b>	
<b>Immunogen Species</b>	Mouse
<b>Clonality</b>	Monoclonal
<b>Clone NO.</b>	D5G3
<b>React Species</b>	Human,Rat
<b>Applications</b>	WB=1:500-1000,IHC-P=1:100-500,IHC-F=1:100-500,IF=1:100-500 (Paraffin sections need antigen repair) not yet tested in other applications. optimal dilutions/concentrations should be determined by the end user.
<b>Cellular localization</b>	The cell membrane
<b>Form</b>	Liquid
<b>Concentration</b>	1mg/ml
<b>Isotype</b>	IgG1/Kappa
<b>Purification</b>	Affinity purified by Protein G
<b>Buffer Solution</b>	1M TBS(pH7.4) with 1% BSA, 3% Proclin300 and 50% Glycerol.
<b>Storage</b>	Shipped at 4°C. Store at -20 °C for one year. Avoid repeated freeze/thaw cycles.
<b>Attention</b>	This product as supplied is intended for research use only, not for use in human, therapeutic or diagnostic applications.
<b>PubMed</b>	<a href="#">PubMed</a>
<b>Product Detail</b>	胞浆磷酸烯醇式丙酮酸羧激酶，催化草酰乙酸（OAA）的可逆脱羧和磷酸化，在糖异生中起限速酶的作用。调节闭锁和回补，控制柠檬酸循环中代谢中间产物水平的过程。在低葡萄糖水平下，它催化草酰乙酸转化为磷酸烯醇式丙酮酸（PEP），这是代谢途径中的限速步骤，通过乳酸和柠檬酸循环产生的其他前体生成葡萄糖。在高糖水平下，它催化磷酸烯醇式丙酮酸向草酰乙酸的回补转化。作为记忆 CD8（+）T 细胞形成和维持的调节者：在这些细胞中上调，通过糖异生（通过相似性）产生磷酸烯醇式丙酮酸。由此产生的磷酸烯醇式丙酮酸流向糖原和磷酸戊糖途径，这是记忆 CD8（+）T 细胞稳态所必需的。

**Product  
Picture**



Blocking buffer: 5% NFDm/TBST

Primary Ab dilution: 1:1000

Primary Ab incubation condition: room temperature 2h

Secondary Ab: Goat Anti-Mouse IgG H&L (HRP)

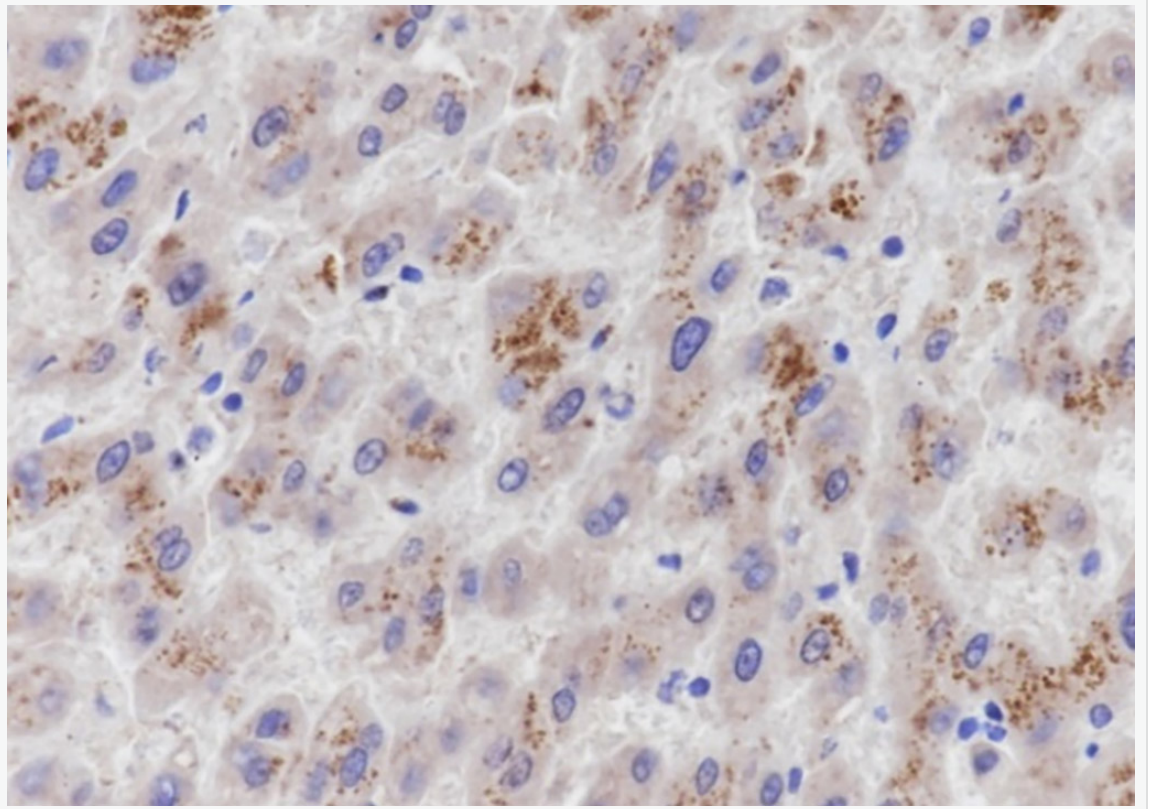
Lysate: 1: Human liver, 2: Rat kidney

Protein loading quantity: 20  $\mu$ g

Exposure time: 60 s

Predicted MW: 65 kDa

Observed MW: 65 kDa



Tissue: Human liver

Section type: Formalin fixed & Paraffin -embedded section

Retrieval method: High temperature and high pressure

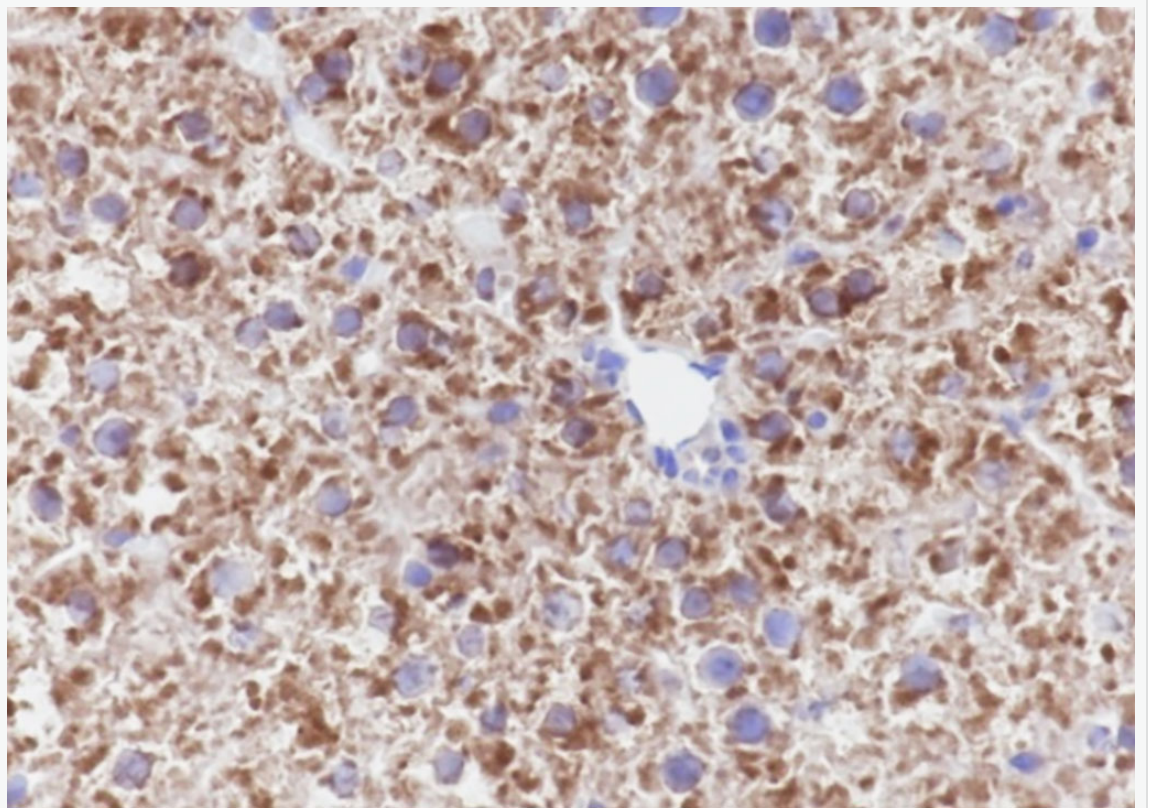
Retrieval buffer: Tris/EDTA buffer, pH 9.0 Primary Ab dilution: 1:100

Primary Ab incubation condition: 1 hour at room temperature

Secondary Ab: SP Kit(Mouse)(sp-0024)

Counter stain: Hematoxylin (Blue)

Comment: Color brown is the positive signal for SLM-60549M



Tissue: Rat liver

Section type: Formalin fixed & Paraffin -embedded section

Retrieval method: High temperature and high pressure

Retrieval buffer: Tris/EDTA buffer, pH 9.0 Primary Ab dilution: 1:100

Primary Ab incubation condition: 1 hour at room temperature

Secondary Ab: SP Kit(Mouse)(sp-0024)

Counter stain: Hematoxylin (Blue)

Comment: Color brown is the positive signal for SLM-60549M