

## Mouse Anti-APOE antibody

SLM-60544M

**Product Name** APOE

**Chinese Name**

**Immunogen Species** Mouse

**Clonality** Monoclonal

**Clone NO.** G1E5

**React Species** Human,Mouse

WB=1:500-2000,IHC-P=1:100-500,IHC-F=1:100-500,ICC/IF=1:50-100,IF=1:100-500  
(Paraffin sections need antigen repair)

**Applications**

not yet tested in other applications.

optimal dilutions/concentrations should be determined by the end user.

**Cellular localization** Extracellular matrix Secretory protein

**Form** Liquid

**Concentration** 1mg/ml

**Lsotype** IgG1/Kappa

**Purification** Affinity purified by Protein G

**Buffer Solution** 1M TBS(pH7.4) with 1% BSA, 3% Proclin300 and 50% Glycerol.

**Storage** Shipped at 4°C. Store at -20 °C for one year. Avoid repeated freeze/thaw cycles.

**Attention** This product as supplied is intended for research use only, not for use in human, therapeutic or diagnostic applications.

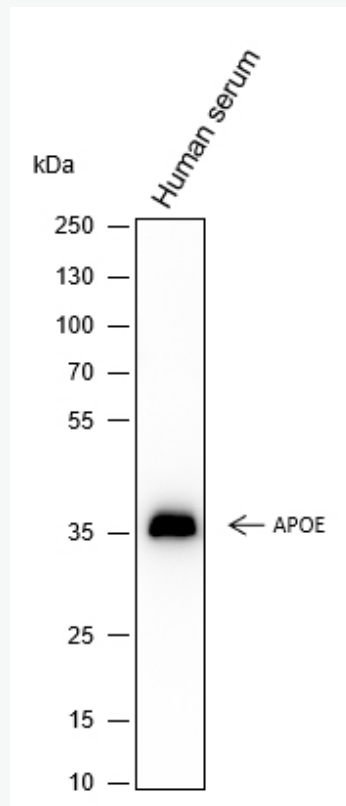
**PubMed** [PubMed](#)

**Product Detail**

载 Lipoproteine (APOE) 是一种载 Lipoprotein, 是一种与脂质颗粒有关的蛋白质, 主要通过血浆和间质液在 Lipoprotein 介导的脂质转运中发挥作用。载 Lipoproteine 是血浆 Lipoprotein 的核心成分, 参与 Lipoprotein 的产生、转化和清除。载 Lipoprotein 是两亲性分子, 与 Lipoprotein 颗粒核心的脂质和血浆的水环境相互作用。因此, 载 Lipoproteine 与乳糜微粒、乳糜微粒残留物、极低密度 Lipoprotein (VLDL) 和中密度 Lipoprotein (IDL) 相关, 但与高密度 Lipoprotein (HDL) 优先结合。它还结合广泛的细胞受体, 包括 LDL 受体/LDLR、LDL 受体相关蛋白 LRP1、LRP2 和 LRP8 以及介导细胞摄取含载 LipoproteinE 的 Lipoprotein 颗粒的极低密度 Lipoprotein 受体

/VLDLR。

**Product  
Picture**



Blocking buffer: 5% NFDM/TBST

Primary ab dilution: 1:5000

Primary ab incubation condition: room temperature 2h

Secondary ab: Goat Anti-Mouse IgG H&L (HRP)

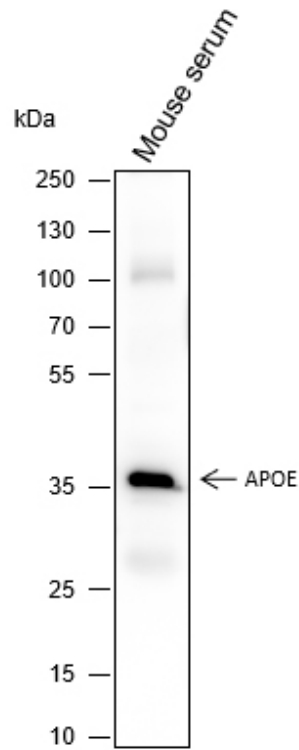
Lysate: Human serum

Protein loading quantity: 20  $\mu$ g

Exposure time: 10 s

Predicted MW: 34-36 kDa

Observed MW: 34-36 kDa



Blocking buffer: 5% NFDM/TBST

Primary ab dilution: 1:1000

Primary ab incubation condition: room temperature 2h

Secondary ab: Goat Anti-Mouse IgG H&L (HRP)

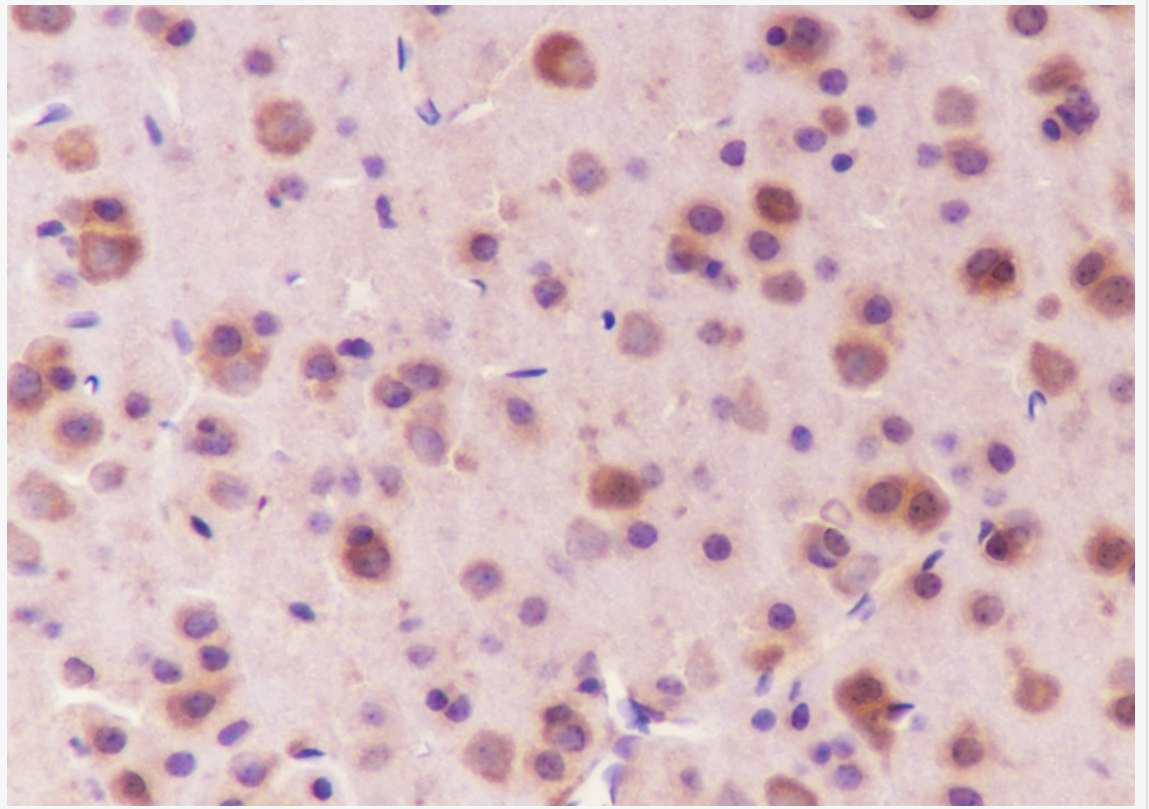
Lysate: Mouse serum

Protein loading quantity: 20  $\mu$ g

Exposure time: 10 s

Predicted MW: 34-36 kDa

Observed MW: 34-36 kDa



Tissue: Mouse brain

Section type: Formalin fixed & Paraffin -embedded section

Retrieval method: High temperature and high pressure

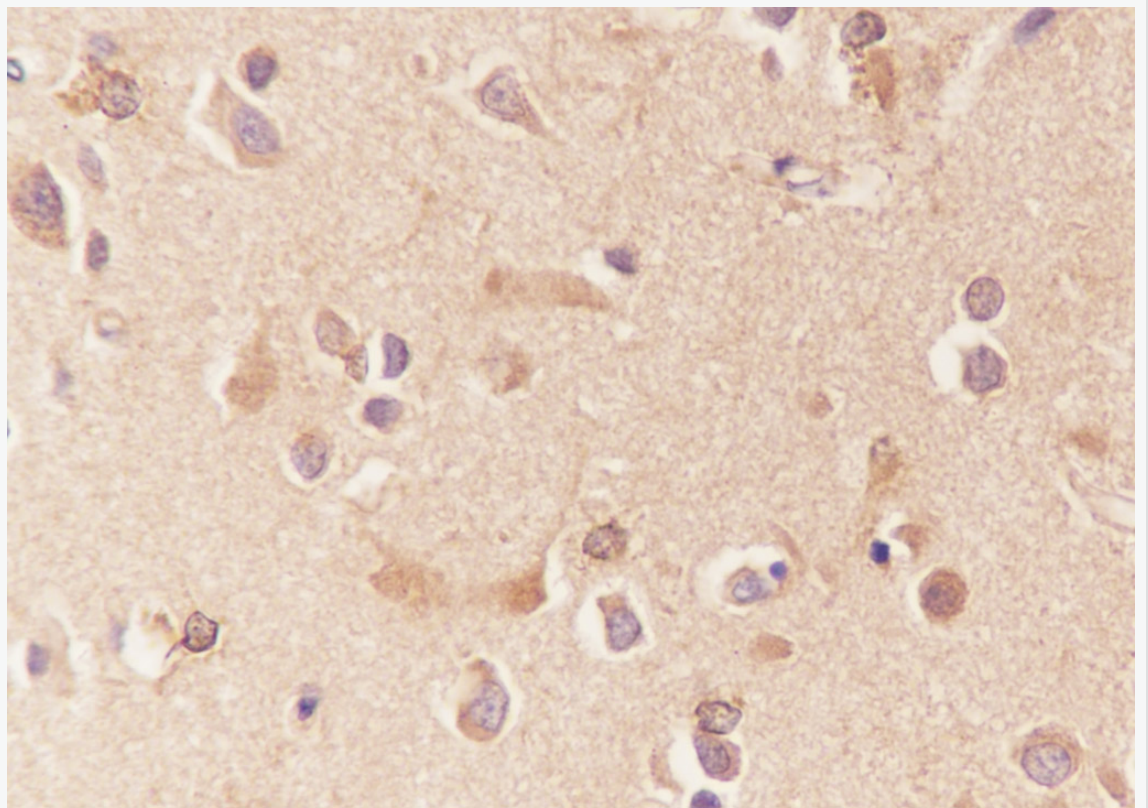
Retrieval buffer: Tris/EDTA buffer, pH 9.0 Primary ab dilution: 1:100

Primary ab incubation condition: 1 hour at room temperature

Secondary ab: SP Kit(Mouse)(sp-0024)

Counter stain: Hematoxylin (Blue)

Comment: Color brown is the positive signal for SLM-60544M



Tissue: Human brain

Section type: Formalin fixed & Paraffin -embedded section

Retrieval method: High temperature and high pressure

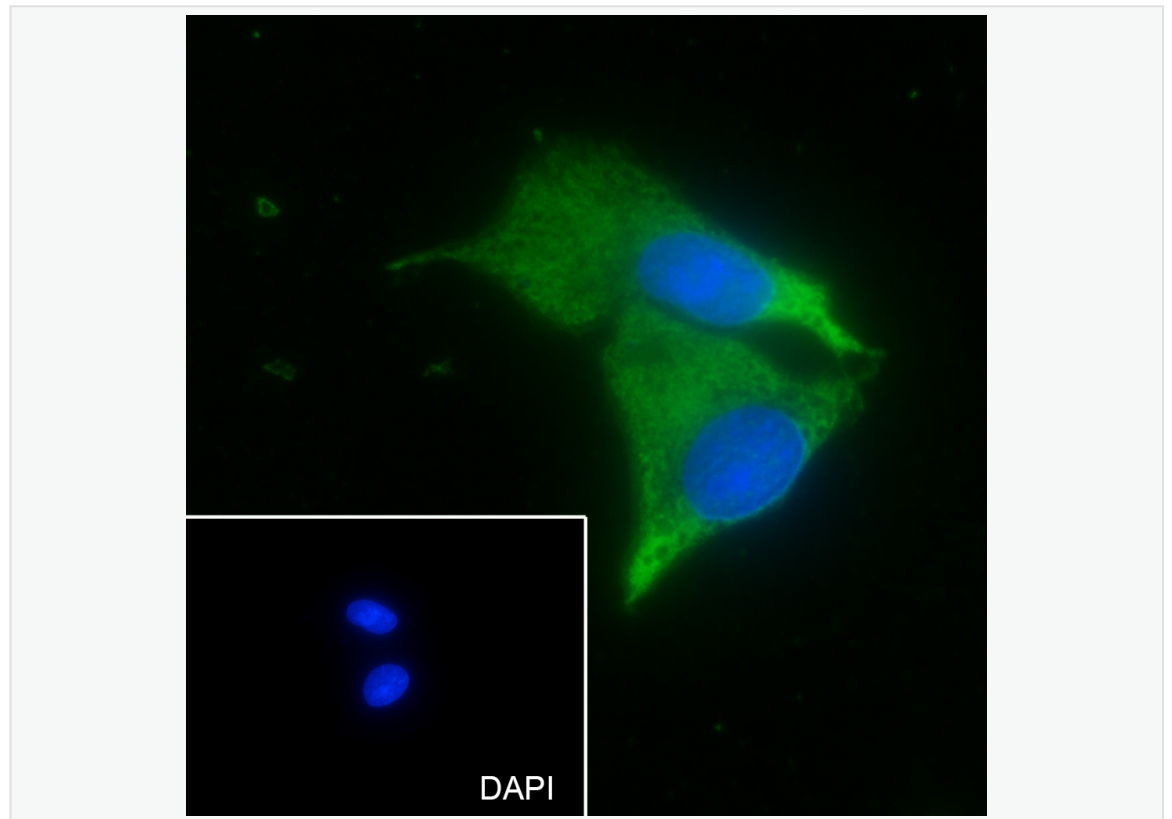
Retrieval buffer: Tris/EDTA buffer, pH 9.0 Primary ab dilution: 1:100

Primary ab incubation condition: 1 hour at room temperature

Secondary ab: SP Kit(Mouse)(sp-0024)

Counter stain: Hematoxylin (Blue)

Comment: Color brown is the positive signal for SLM-60544M



Cell line: HepG2

Fixative: 100% Ice-cold methanol

Permeabilization: 0.1% TritonX-100

Primary ab dilution: 1:50

Primary incubation condition: 4°C overnight

Secondary ab: Goat Anti-Mouse IgG

Nuclear counter stain: DAPI (Blue)

Comment: Color green is the positive signal for SLM-60544M