

Rabbit Anti-PHB2 antibody

SLM-60543R

Product Name	PHB2
Chinese Name	B 细胞受体相关蛋白 Recombinant rabbit monoclonal anti PHB2_HUMAN; Prohibitin-2; B-cell receptor-associated protein BAP37;
Alias	D-prohibitin; Repressor of estrogen receptor activity; BAP; REA; p22; hBAP; Bap37; BCAP37; PNAS-141;
Research Area	Mitochondrion
Immunogen Species	Rabbit
Clonality	Monoclonal
Clone NO.	F5G8
React Species	Human(predicted:Mouse,Rat) WB=1:2000-10000,ICC/IF=1:100-500
Applications	not yet tested in other applications. optimal dilutions/concentrations should be determined by the end user.
Cellular localization	The nucleus cytoplasmic The cell membrane Mitochondrion
Form	Liquid
Concentration	1mg/ml
Lsotype	IgG/Kappa
Purification	Affinity purified by Protein A
Buffer Solution	1M TBS(pH7.4) with 1% BSA, 3% Proclin300 and 50% Glycerol.
Storage	Shipped at 4°C. Store at -20 °C for one year. Avoid repeated freeze/thaw cycles.
Attention	This product as supplied is intended for research use only, not for use in human, therapeutic or diagnostic applications.
PubMed	PubMed Enables several functions, including protein C-terminus binding activity; protein N-terminus binding activity; and protein dimerization activity. Involved in several processes, including defense response to virus; positive regulation of cell cycle phase transition; and regulation of transcription, DNA-templated. Located in several cellular components, including cell surface; mitochondrial membrane; and nuclear matrix. Part of mitochondrial prohibitin complex. [provided by Alliance of Genome Resources, Apr 2022]
Product Detail	

Subcellular Location:

Mitochondrion inner membrane. Cytoplasm. Nucleus. Also cytoplasmic and nuclear.

SWISS:

Q99623

Gene ID:

11331

Database links:

[Entrez Gene: 11331](#) Human

[Entrez Gene: 12034](#) Mouse

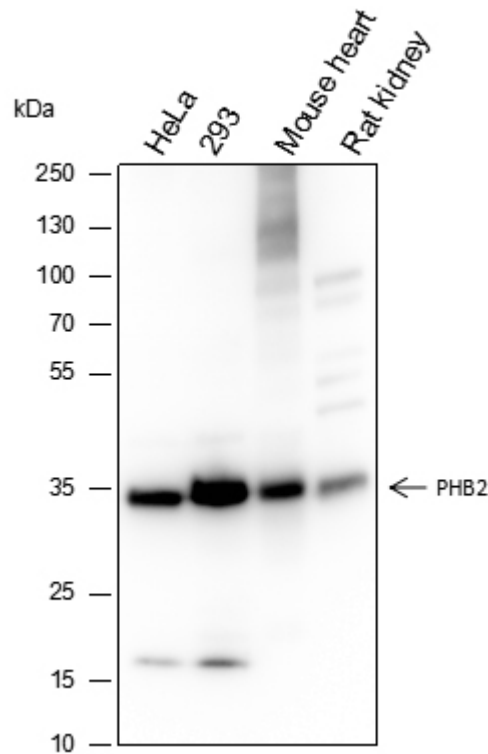
[Entrez Gene: 114766](#) Rat

[SwissProt: Q99623](#) Human

[SwissProt: O35129](#) Mouse

[SwissProt: Q5XIH7](#) Rat

Product Picture



Blocking buffer: 5% NFDM/TBST

Primary ab dilution: 1:10000

Primary ab incubation condition: 2 hours at room temperature

Secondary ab: Goat Anti-Rabbit IgG H&L (HRP)

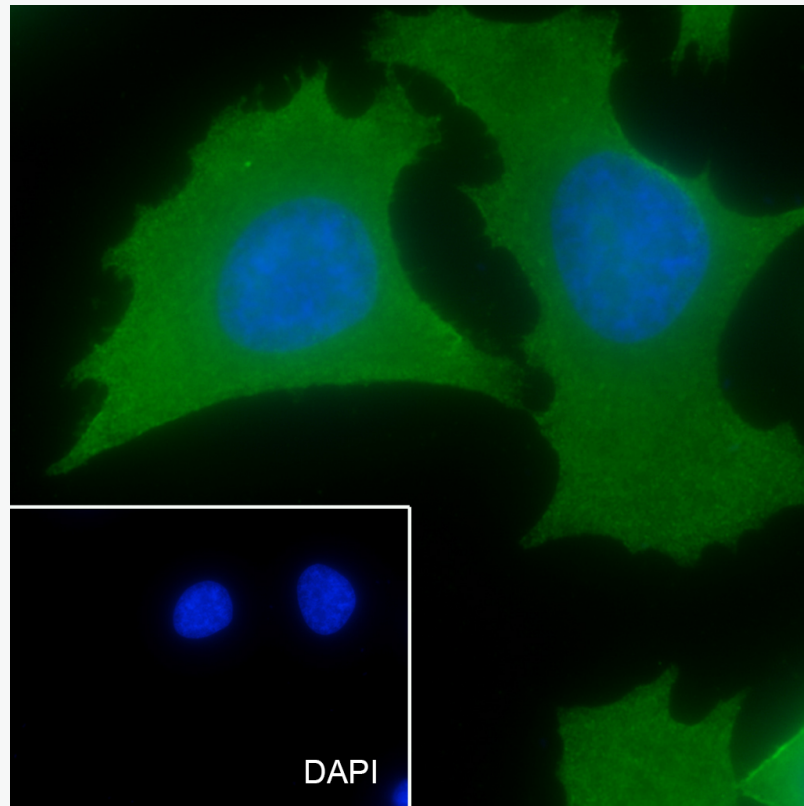
Lysate: HeLa, 293, Mouse heart, Rat kidney

Protein loading quantity: 20 μ g

Exposure time: 30 s

Predicted MW: 33 kDa

Observed MW: 33 kDa



Cell line: HeLa

Fixative: 100% Ice-cold methanol

Permeabilization: 0.1% TritonX-100

Primary ab dilution: 1:50

Primary incubation condition: 4°C overnight

Secondary ab: Goat Anti-Rabbit IgG

Nuclear counter stain: DAPI (Blue)

Comment: Color green is the positive signal for SLM-60543R