

Rabbit Anti-ALDH1L1 antibody

SLM-60542R

Product Name ALDH1L1

Chinese Name 乙醛脱氢酶 1 蛋白家族 L1Recombinant rabbit monoclonal anti

Alias AL1L1_HUMAN; Cytosolic 10-formyltetrahydrofolate dehydrogenase; Aldehyde dehydrogenase family 1 member L1; FTHFD; EC:1.5.1.6; 10-FTHFDH; FDH; 10-fTHF;

Immunogen Species Rabbit

Clonality Monoclonal

Clone NO. G10H7

React Species Human,Mouse,Rat

WB=1:500-2000,IHC-P=1:50-200,IHC-F=1:50-200,ICC/IF=1:50-200,IF=1:50-200

Applications (Paraffin sections need antigen repair)
not yet tested in other applications.
optimal dilutions/concentrations should be determined by the end user.

Theoretical molecular weight 100kDa

Cellular localization The cell membrane

Form Liquid

Concentration 1mg/ml

Lsotype IgG/Kappa

Purification Affinity purified by Protein A

Buffer Solution 1M TBS(pH7.4) with 1% BSA, 3% Proclin300 and 50% Glycerol.

Storage Shipped at 4°C. Store at -20 °C for one year. Avoid repeated freeze/thaw cycles.

Attention This product as supplied is intended for research use only, not for use in human, therapeutic or diagnostic applications.

PubMed [PubMed](#)

Product Detail The protein encoded by this gene catalyzes the conversion of 10-formyltetrahydrofolate, nicotinamide adenine dinucleotide phosphate (NADP+), and water to tetrahydrofolate, NADPH, and carbon dioxide. The encoded protein belongs to the aldehyde dehydrogenase family. Loss of function or expression of this gene is associated with decreased apoptosis, increased cell motility,

and cancer progression. There is an antisense transcript that overlaps on the opposite strand with this gene locus. Alternative splicing results in multiple transcript variants. [provided by RefSeq, Jun 2012]

Subcellular Location:

Cytoplasm.

Tissue Specificity:

Highly expressed in liver, pancreas and kidney.

SWISS:

O75891

Gene ID:

10840

Database links:

[Entrez Gene: 10840](#) Human

[Entrez Gene: 107747](#) Mouse

[Entrez Gene: 64392](#) Rat

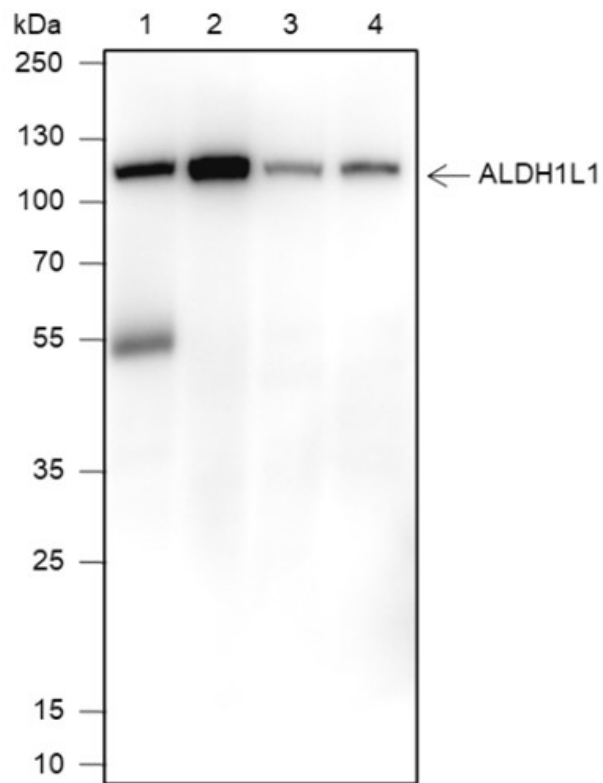
[SwissProt: O75891](#) Human

[SwissProt: Q8R0Y6](#) Mouse

[SwissProt: P28037](#) Rat

该基因编码的蛋白质催化 10-甲酰四氢叶酸、烟酰胺腺嘌呤二核苷酸磷酸 (NADP+) 和水转化为四氢叶酸、NADPH 和二氧化碳。编码的蛋白质属于乙醛脱氢酶家族。该基因的功能丧失或表达与 Apoptosis 减少、细胞活力增强和癌症进展有关。有一个反义转录物与这个基因位点在相反的链上重叠。选择性剪接导致多个转录变体。

**Product
Picture**



Blocking buffer: 5% NFDm/TBST

Primary Ab dilution: 1:1000

Primary Ab incubation condition: 2 hours at room temperature

Secondary Ab: Goat Anti-Rabbit IgG H&L (HRP)

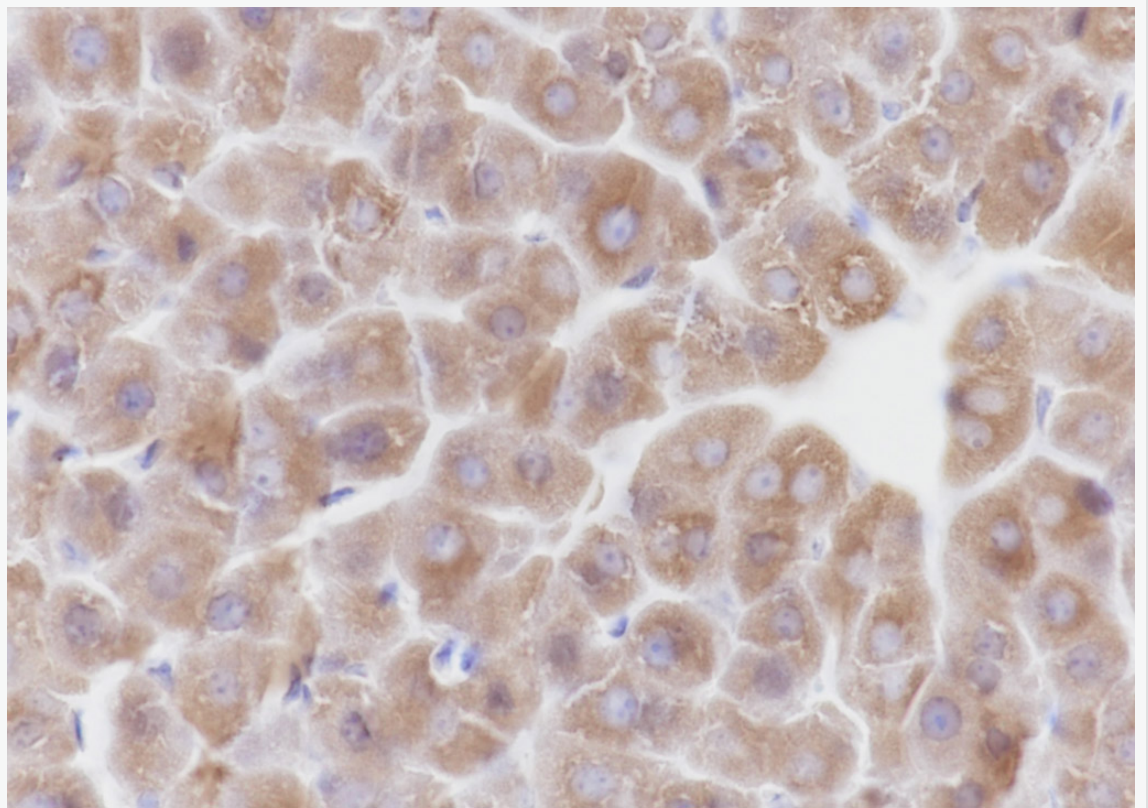
Lysate: 1: Human liver, 2: Mouse liver, 3: Mouse kidney, 4: Rat liver

Protein loading quantity: 20 μ g

Exposure time: 60 s

Predicted MW: 100 kDa

Observed MW: 110 kDa



Tissue: Mouse liver

Section type: Formalin fixed & Paraffin -embedded section

Retrieval method: High temperature and high pressure

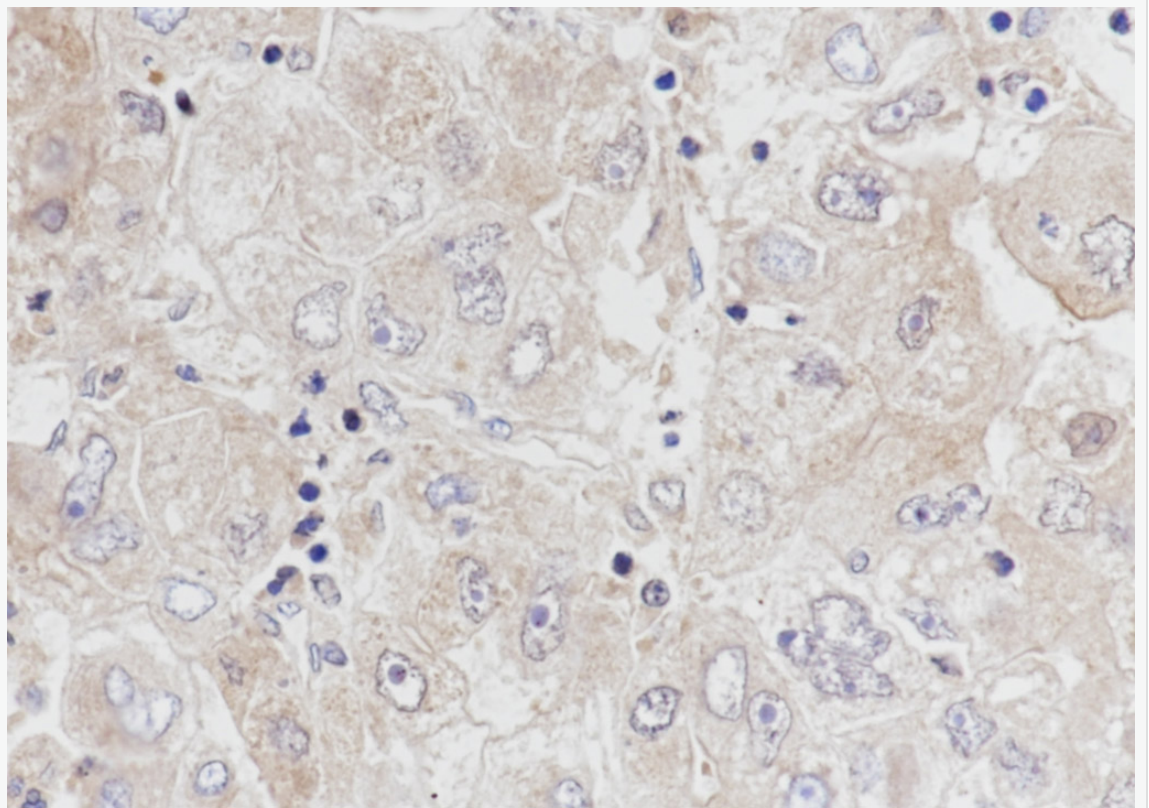
Retrieval buffer: Tris/EDTA buffer, pH 9.0 Primary Ab dilution: 1:100

Primary Ab incubation condition: 1 hour at room temperature

Secondary Ab: SP Kit(Rabbit) (sp-0023)

Counter stain: Hematoxylin (Blue)

Comment: Color brown is the positive signal for SLM-60542R



Tissue: Human liver cancer

Section type: Formalin fixed & Paraffin -embedded section

Retrieval method: High temperature and high pressure

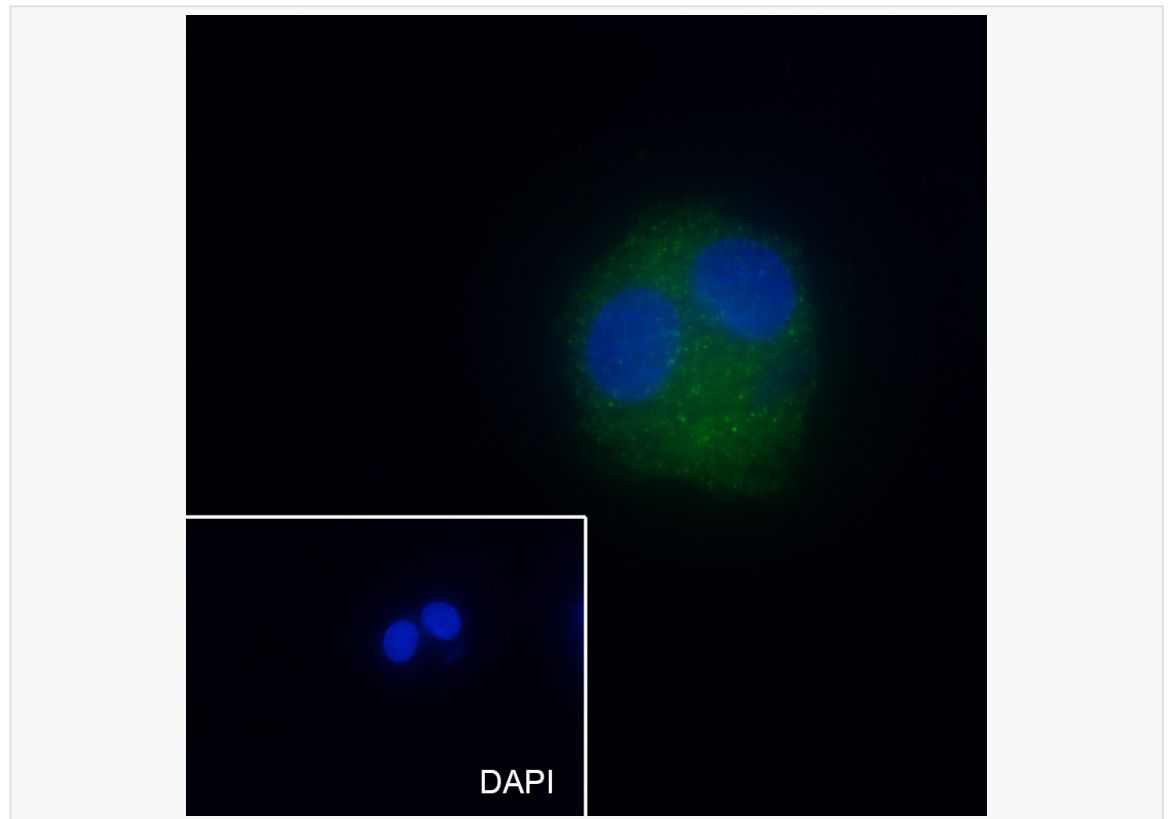
Retrieval buffer: Tris/EDTA buffer, pH 9.0 Primary Ab dilution: 1:100

Primary Ab incubation condition: 1 hour at room temperature

Secondary Ab: SP Kit(Rabbit) (sp-0023)

Counter stain: Hematoxylin (Blue)

Comment: Color brown is the positive signal for SLM-60542R



Cell line: HepG2

Fixative: 4% Paraformaldehyde

Permeabilization: 0.1% TritonX-100

Primary ab dilution: 1:50

Primary incubation condition: 4°C overnight

Secondary ab: Goat Anti-Rabbit IgG

Nuclear counter stain: DAPI (Blue)

Comment: Color green is the positive signal for SLM-60542R