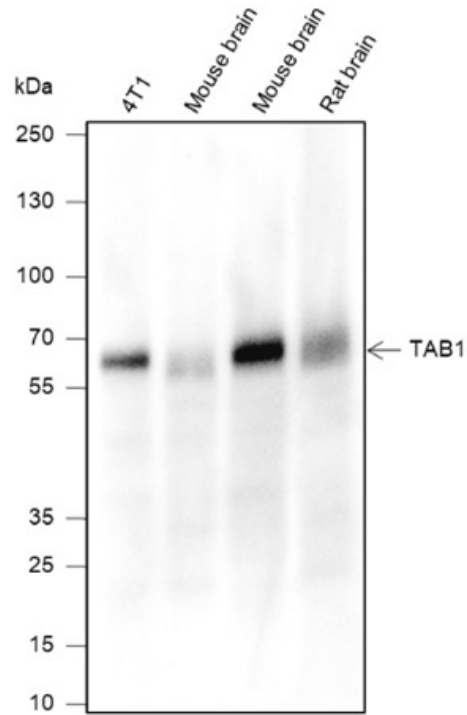


Mouse Anti-TAB1 antibody

SLM-60541M

Product Name	TAB1
Chinese Name	
Immunogen Species	Mouse
Clonality	Monoclonal
Clone NO.	E11A2
React Species	Human,Mouse(predicted:Rat) WB=1:500-1000
Applications	not yet tested in other applications. optimal dilutions/concentrations should be determined by the end user.
Cellular localization	The cell membrane
Form	Liquid
Concentration	1mg/ml
Lsotype	IgG1/Kappa
Purification	Affinity purified by Protein G
Buffer Solution	1M TBS(pH7.4) with 1% BSA, 3% Proclin300 and 50% Glycerol.
Storage	Shipped at 4°C. Store at -20 °C for one year. Avoid repeated freeze/thaw cycles.
Attention	This product as supplied is intended for research use only, not for use in human, therapeutic or diagnostic applications.
PubMed	PubMed
Product Detail	可能是 TGFB 受体与 MAP3K7/TAK1 之间重要的信号传导中介。可能在哺乳动物胚胎发生中起重要作用。

Product Picture



Blocking buffer: 5% NFDN/TBST

Primary ab dilution: 1:1000

Primary ab incubation condition: room temperature 2h

Secondary ab: Goat Anti-Mouse IgG H&L (HRP)

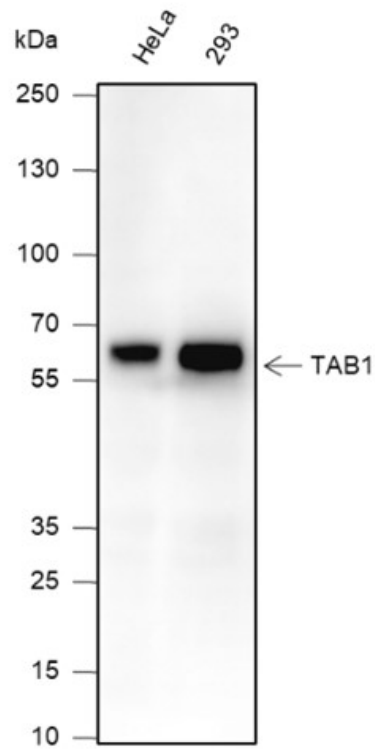
Lysate: 4T1, Mouse brain, F9, Rat brain

Protein loading quantity: 20 μ g

Exposure time: 30 s

Predicted MW: 60 kDa

Observed MW: 60 kDa



Blocking buffer: 5% NFDN/TBST

Primary ab dilution: 1:1000

Primary ab incubation condition: room temperature 2h

Secondary ab: Goat Anti-Mouse IgG H&L (HRP)

Lysate: HeLa, 293

Protein loading quantity: 20 μ g

Exposure time: 60 s

Predicted MW: 60 kDa

Observed MW: 60 kDa