

Mouse Anti-WNT10B antibody

SLM-60528M

Product Name	WNT10B
Chinese Name	信号通路 WNT10B 重组鼠单抗
Alias	WN10B_HUMAN; SHFM6; wingless type MMTV integration site family, member 10B; wnt12; WNT10-B.
Research Area	Tumour immunology Signal transduction transcriptional regulatory factor
Immunogen Species	Mouse
Clonality	Monoclonal
React Species	Human,Rat(predicted:Mouse) WB=1:500-2000,IHC-P=1:100-500,IHC-F=1:100-500,ICC/IF=1:100-500,IF=1:100-500 (Paraffin sections need antigen repair)
Applications	not yet tested in other applications. optimal dilutions/concentrations should be determined by the end user.
Theoretical molecular weight	40kDa
Cellular localization	cytoplasmic
Form	Liquid
Concentration	1mg/ml
immunogen	KLH conjugated synthetic peptide derived from human WNT10B
Lsotype	IgG1/Kappa
Purification	affinity purified by Protein G
Buffer Solution	1M TBS(pH7.4) with 1% BSA, 3% Proclin300 and 50% Glycerol.
Storage	Shipped at 4°C. Store at -20 °C for one year. Avoid repeated freeze/thaw cycles.
Attention	This product as supplied is intended for research use only, not for use in human, therapeutic or diagnostic applications.
PubMed	PubMed
Product	The WNT gene family consists of structurally related genes which encode secreted

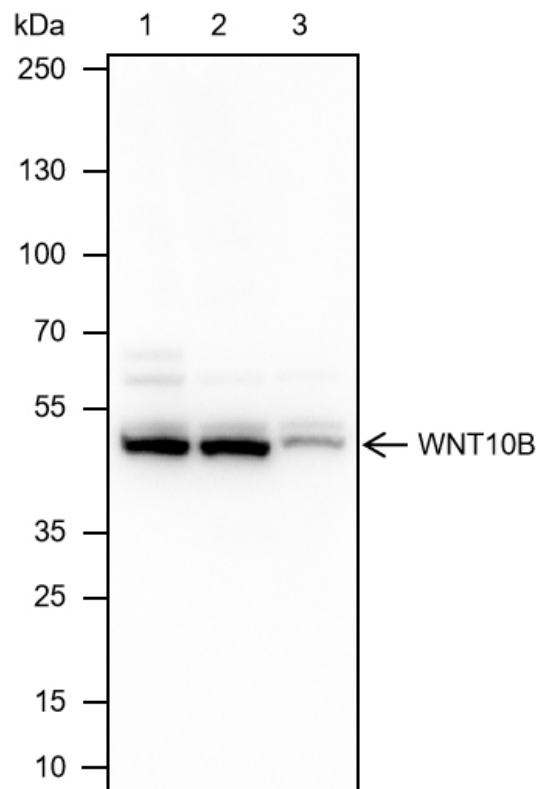
Detail

signaling proteins. These proteins have been implicated in oncogenesis and in several developmental processes, including regulation of cell fate and patterning during embryogenesis. This gene is a member of the WNT gene family. It may be involved in breast cancer, and its protein signaling is likely a molecular switch that governs adipogenesis. This protein is 96% identical to the mouse Wnt10b protein at the amino acid level. This gene is clustered with another family member, WNT1, in the chromosome 12q13 region. [provided by RefSeq, Jul 2008]

SWISS:
O00744

Gene ID:
7480

Product Picture



Blocking buffer: 5% NFDM/TBST

Primary ab dilution: 1:10000

Primary ab incubation condition: 2 hours at room temperature

Secondary ab: Goat Anti-Mouse IgG H&L (HRP)

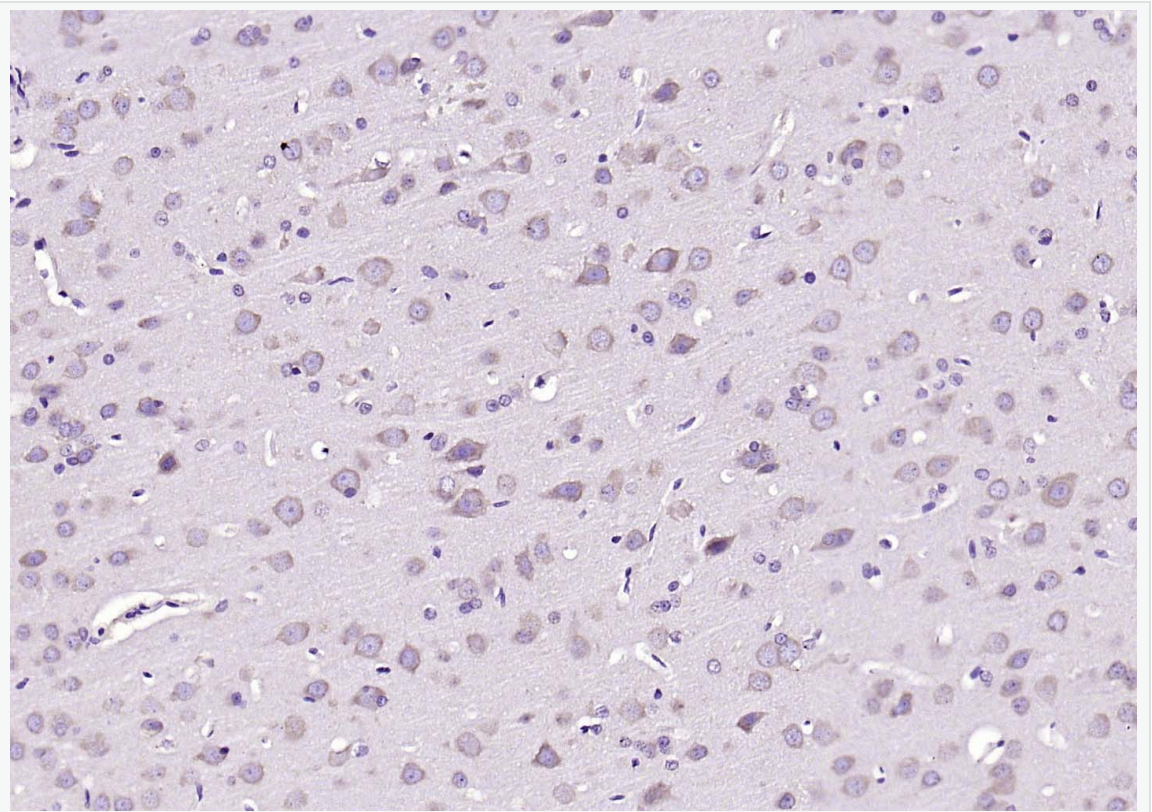
Lysate: 1: HeLa, 2: SH-SY5Y, 3: C2C12

Protein loading quantity: 20 μ g

Exposure time: 3 s

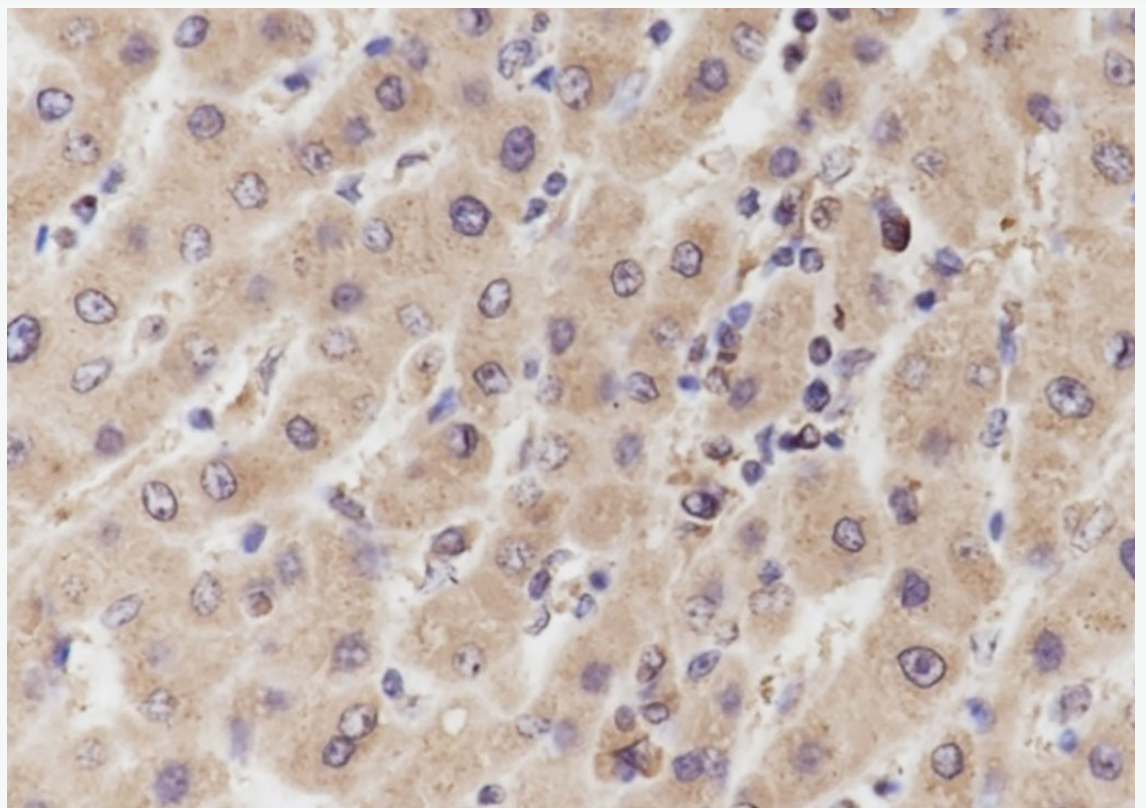
Predicted MW: 43 kDa

Observed MW: 43 kDa

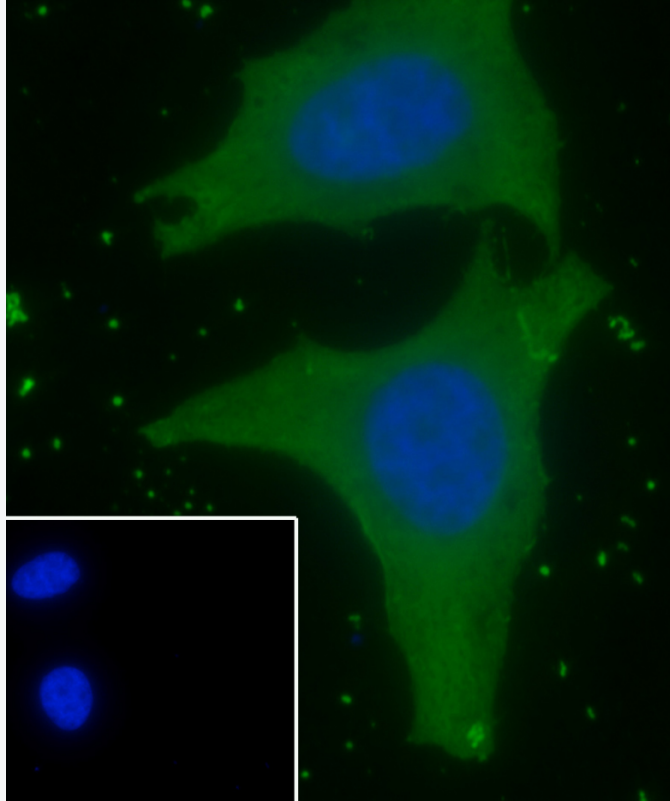


Paraformaldehyde-fixed, paraffin embedded (rat brain); Antigen retrieval by boiling in sodium citrate buffer (pH6.0) for 15min; Block endogenous peroxidase by 3% hydrogen peroxide for 20 minutes; Blocking buffer (normal goat serum) at 37°C for 30min; Antibody incubation with (WNT10B) Monoclonal Antibody, Unconjugated

(SLM-60528M) at 1:200 overnight at 4°C, followed by operating according to SP Kit(Mouse)(sp-0024) instructions and DAB staining.



Tissue: Human liver cancer Section type: Formalin fixed & Paraffin -embedded section
Retrieval method: High temperature and high pressure Retrieval buffer: Tris/EDTA
buffer, pH 9.0 Primary ab dilution: 1:100 Primary ab incubation condition: 1 hour at
room temperature Secondary ab: SP Kit(Mouse)(sp-0024) Counter stain: Hematoxylin
(Blue) Comment: Color brown is the positive signal for SLM-60528M



Cell line: HeLa Fixative: 4% Paraformaldehyde Permeabilization: 0.1% TritonX-100
Primary ab dilution: 1:50 Primary incubation condition: 4°C overnight Secondary ab:
Goat Anti-Mouse IgG Nuclear counter stain: DAPI (Blue) Comment: Color green is the
positive signal for SLM-60528M