

## Mouse Anti-HLA-E antibody

SLM-60508M

**Product Name** HLA-E

**Chinese Name**

**Immunogen Species** Mouse

**Clonality** Monoclonal

**Clone NO.** B6E6

**React Species** Human

WB=1:500-1000,IHC-P=1:100-500,IHC-F=1:100-500,ICC/IF=1:100-500,IF=1:100-500  
(Paraffin sections need antigen repair)

**Applications**

not yet tested in other applications.

optimal dilutions/concentrations should be determined by the end user.

**Cellular localization** cytoplasmic Extracellular matrix Secretory protein

**Form** Liquid

**Concentration** 1mg/ml

**Isotype** IgG2A/Kappa

**Purification** Affinity purified by Protein G

**Buffer Solution** 1M TBS(pH7.4) with 1% BSA, 3% Proclin300 and 50% Glycerol.

**Storage** Shipped at 4°C. Store at -20 °C for one year. Avoid repeated freeze/thaw cycles.

**Attention** This product as supplied is intended for research use only, not for use in human, therapeutic or diagnostic applications.

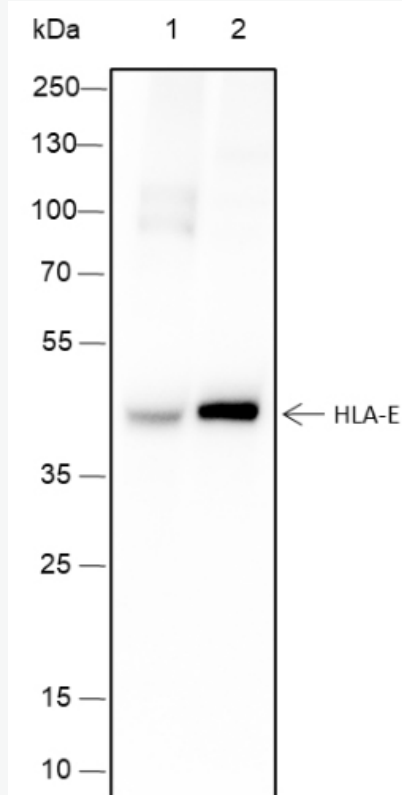
**PubMed** [PubMed](#)

**Product Detail**

非经典主要组织相容性 Ib 类分子参与免疫自非自识别。在与 B2M/ $\beta$ -2-微球蛋白的复合物中，结合源自经典 MHC Ia 类分子信号序列的非聚体自身肽 (VL9 肽)。肽结合的 HLA-E-B2M 异源三聚体复合物主要作为自然杀伤 (NK) 细胞抑制性受体 KLRD1-KLRC1 的配体发挥作用，使 NK 细胞能够监测健康细胞中其他 MHC I 类分子的表达并耐受自身免疫。在细胞应激时，优先结合来自应激诱导的伴侣的信号序列衍生肽，并且不再被 NK 细胞抑制性受体 KLRD1-KLRC1 识别，导致 NK 细胞的保护受损。结合非经典 MHC-Ib 类 HLA-G 分子的信号序列衍生肽，作为 NK 细胞激活受体 KLRD1-KLRC2 的配体，可能在适应性 NK 细胞的产生和效应器功能以及妊

娠期母胎耐受中发挥作用。除了自身肽外，还可以结合和呈现与 VL9 肽构象相似的病原体源性肽到非常规 CD8+细胞毒性 T 细胞上的  $\alpha$ - $\beta$ T 细胞受体（TCR），最终触发抗菌免疫反应。

**Product  
Picture**



Blocking buffer: 5% NFDM/TBST

Primary Ab dilution: 1:1000

Primary Ab incubation condition: 2 hours at room temperature

Secondary Ab: Goat Anti-Mouse IgG H&L (HRP)

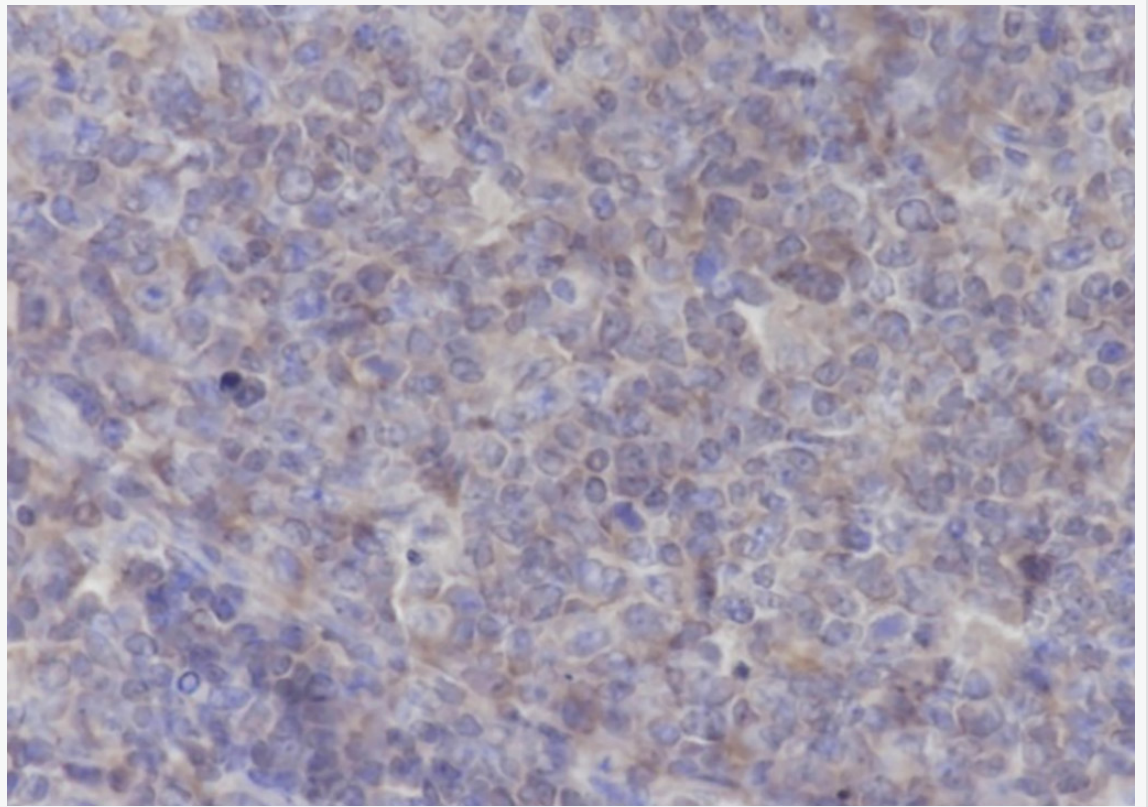
Lysate: 1: THP-1, 2: Raji

Protein loading quantity: 20  $\mu$ g

Exposure time: 3 s

Predicted MW: 40 kDa

Observed MW: 40 kDa



Tissue: Human tonsil

Section type: Formalin fixed & Paraffin -embedded section

Retrieval method: High temperature and high pressure

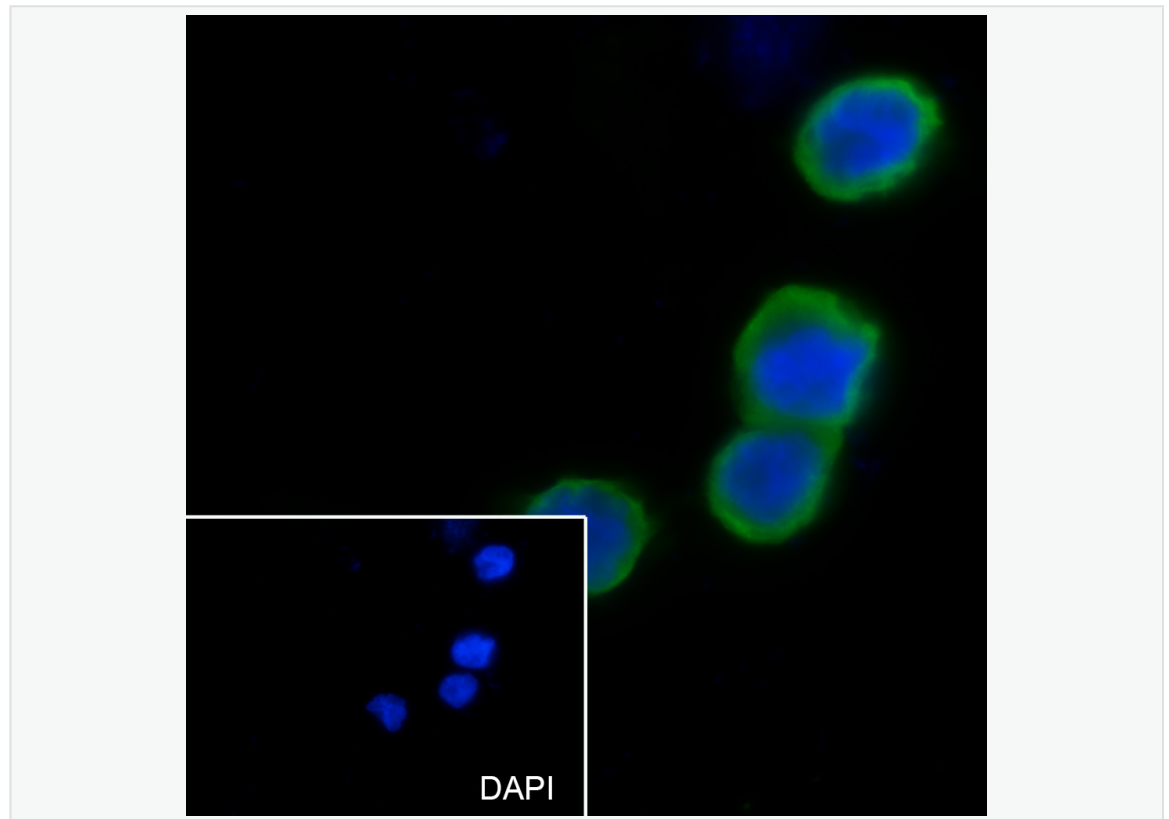
Retrieval buffer: Tris/EDTA buffer, pH 9.0 Primary Ab dilution: 1:100

Primary Ab incubation condition: 1 hour at room temperature

Secondary Ab: SP Kit(Mouse)(sp-0024)

Counter stain: Hematoxylin (Blue)

Comment: Color brown is the positive signal for SLM-60508M



Cell line: THP-1

Fixative: 4% Paraformaldehyde

Permeabilization: 0.1% TritonX-100

Primary Ab dilution: 1:50

Primary incubation condition: 4°C overnight

Secondary Ab: Goat Anti-Mouse IgG

Nuclear counter stain: DAPI (Blue)

Comment: Color green is the positive signal for SLM-60508M