

Mouse Anti-VPS18 antibody

SLM-60507M

Product Name VPS18

Chinese Name

Immunogen Species Mouse

Clonality Monoclonal

Clone NO. H3H6

React Species Human,Rat(predicted:Mouse)

WB=1:500-1000,IHC-P=1:100-500,IHC-F=1:100-500,ICC/IF=1:100-500,IF=1:100-500
(Paraffin sections need antigen repair)

Applications

not yet tested in other applications.

optimal dilutions/concentrations should be determined by the end user.

Cellular localization cytoplasmic The cell membrane

Form Liquid

Concentration 1mg/ml

Lsotype Ig2A/Kappa

Purification Affinity purified by Protein G

Buffer Solution 1M TBS(pH7.4) with 1% BSA, 3% Proclin300 and 50% Glycerol.

Storage Shipped at 4°C. Store at -20 °C for one year. Avoid repeated freeze/thaw cycles.

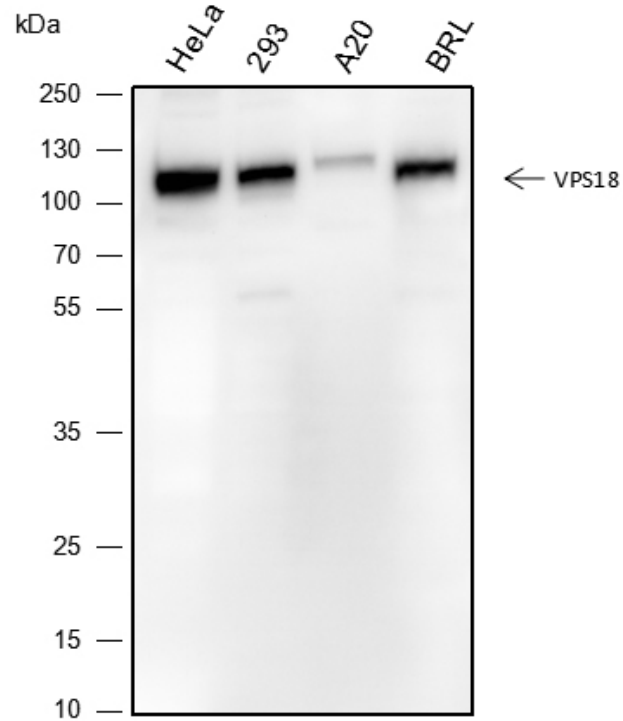
Attention This product as supplied is intended for research use only, not for use in human, therapeutic or diagnostic applications.

PubMed [PubMed](#)

Product Detail

在囊泡介导的蛋白质向溶酶体运输中起作用，包括内吞膜运输和自噬途径。被认为是假定的啤酒花和 CORVET 内体栓系复合体的核心组成部分，这些复合体被认为参与 Rab5 到 Rab7 内体转化，可能涉及 MON1A/B，并通过结合圈套和圈套复合体来介导圈套介导的膜融合过程中的栓系和对接事件。啤酒花复合物被提议在晚期内质体膜上被招募到 Rab7，并调节晚期内吞、吞噬和自噬向溶酶体的运输。CORVET 复合体被认为是 Rab5 效应子，可能在特定的内体亚群中介导早期内体融合。内切体和自噬体与溶酶体融合所必需的。参与浦肯野细胞的树突发育。

**Product
Picture**



Blocking buffer: 5% NFDN/TBST

Primary ab dilution: 1:1000

Primary ab incubation condition: 2 hours at room temperature

Secondary ab: Goat Anti-Mouse IgG H&L (HRP)

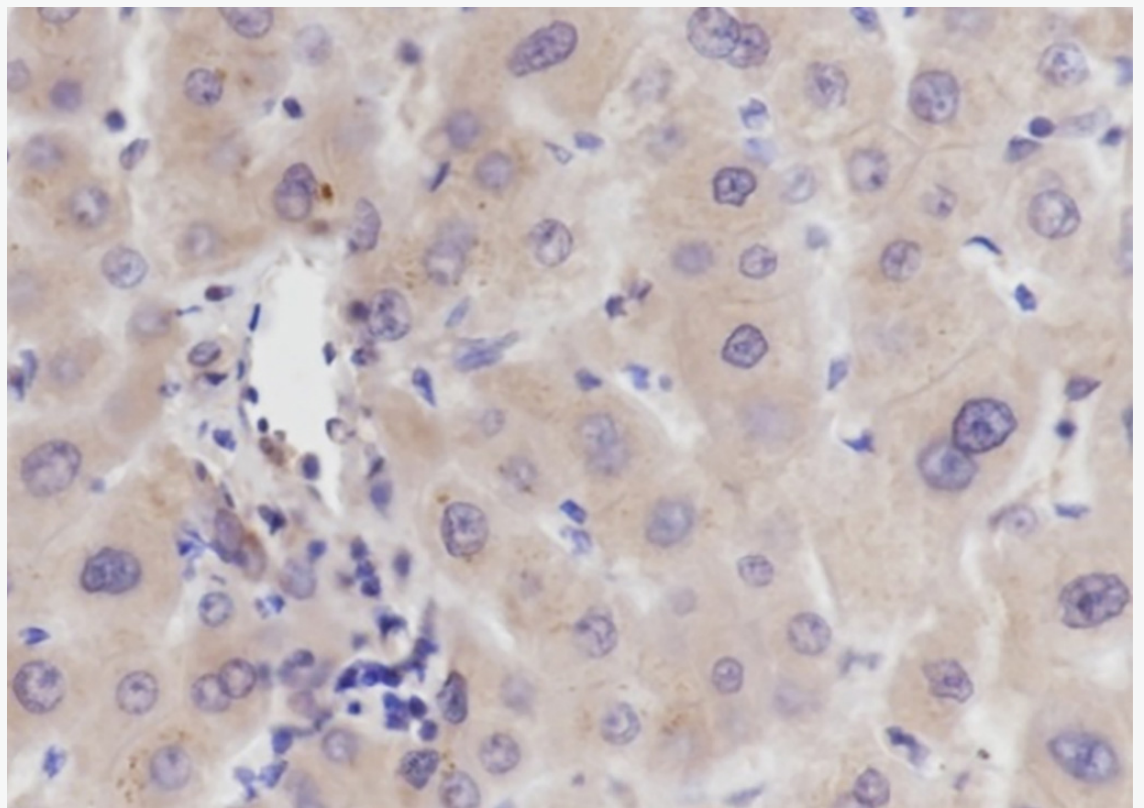
Lysate: HeLa, 293, A20, BRL

Protein loading quantity: 20 μ g

Exposure time: 60 s

Predicted MW: 100 kDa

Observed MW: 100 kDa



Tissue: Human liver cancer

Section type: Formalin fixed & Paraffin -embedded section

Retrieval method: High temperature and high pressure

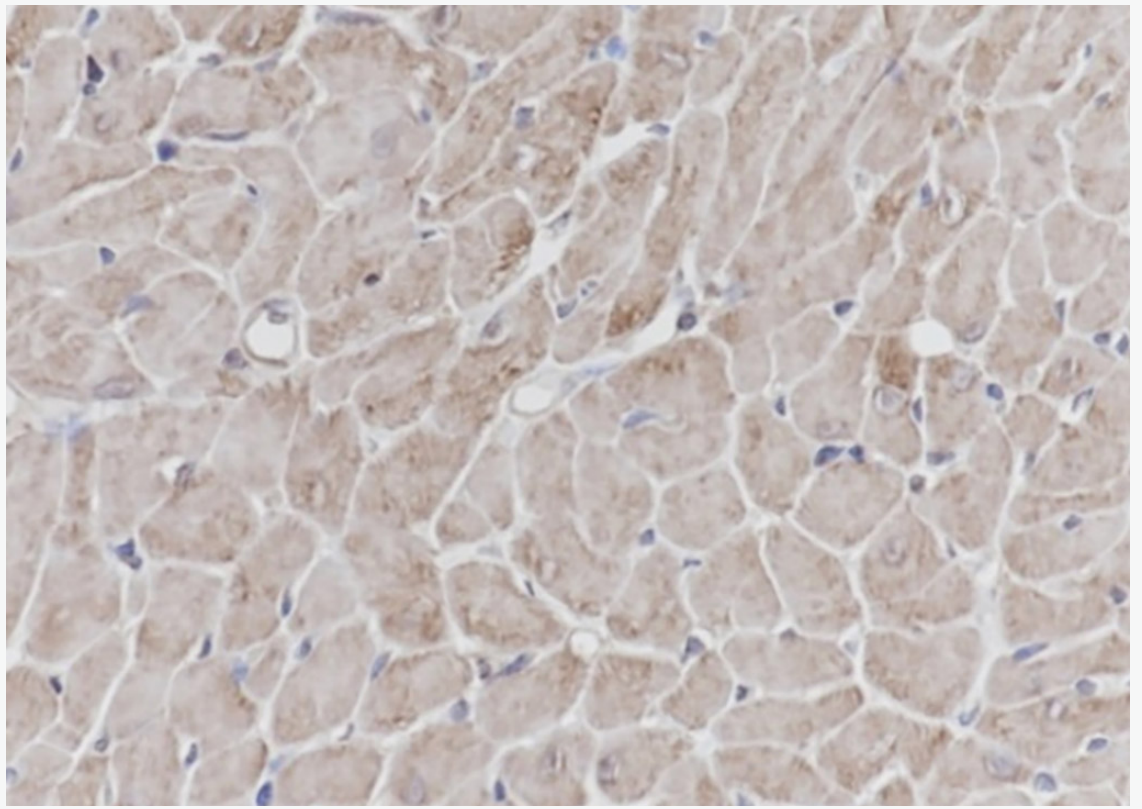
Retrieval buffer: Tris/EDTA buffer, pH 9.0 Primary ab dilution: 1:100

Primary ab incubation condition: 1 hour at room temperature

Secondary ab: SP Kit(Mouse)(sp-0024)

Counter stain: Hematoxylin (Blue)

Comment: Color brown is the positive signal for SLM-60507M



Tissue: Rat heart

Section type: Formalin fixed & Paraffin -embedded section

Retrieval method: High temperature and high pressure

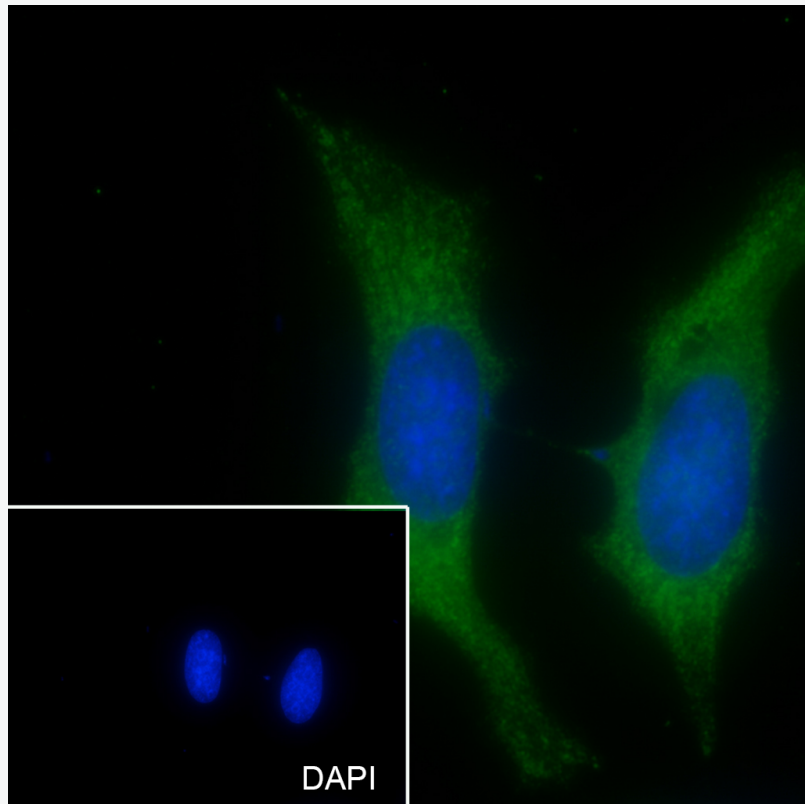
Retrieval buffer: Tris/EDTA buffer, pH 9.0 Primary ab dilution: 1:100

Primary ab incubation condition: 1 hour at room temperature

Secondary ab: SP Kit(Mouse)(sp-0024)

Counter stain: Hematoxylin (Blue)

Comment: Color brown is the positive signal for SLM-60507M



Cell line: HeLa

Fixative: 100% Ice-cold methanol

Permeabilization: 0.1% TritonX-100

Primary ab dilution: 1:50

Primary incubation condition: 4°C overnight

Secondary ab: Goat Anti-Mouse IgG

Nuclear counter stain: DAPI (Blue)

Comment: Color green is the positive signal for SLM-60507M