

## Rabbit Anti-MCM5 antibody

SLM-60506R

**Product Name** MCM5

**Immunogen Species** Rabbit

**Clonality** Monoclonal

**Clone NO.** A8E10

**React Species** Human,Mouse,Rat

WB=1:500-2000,IHC-P=1:50-200,IHC-F=1:50-200,IF=1:50-200,Flow-Cyt=1:50-100  
(Paraffin sections need antigen repair)

**Applications** not yet tested in other applications.  
optimal dilutions/concentrations should be determined by the end user.

**Cellular localization** The nucleus The cell membrane

**Form** Liquid

**Concentration** 1mg/ml

**Isotype** IgG/Kappa

**Purification** Affinity purified by Protein A

**Buffer Solution** 1M TBS(pH7.4) with 1% BSA, 3% Proclin300 and 50% Glycerol.

**Storage** Shipped at 4°C. Store at -20 °C for one year. Avoid repeated freeze/thaw cycles.

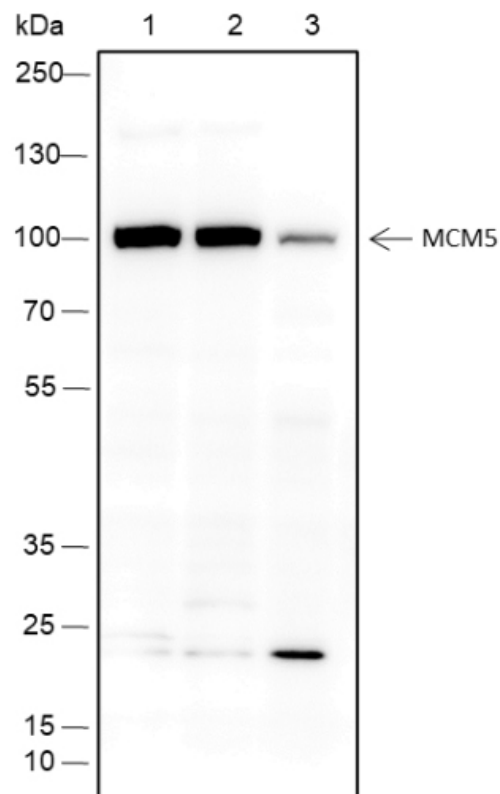
**Attention** This product as supplied is intended for research use only, not for use in human, therapeutic or diagnostic applications.

**PubMed** [PubMed](#)

### Product Detail

作为 MCM2-7 复合物 (MCM 复合物) 的组成部分, MCM2-7 复合物是真核细胞中“每细胞周期一次”DNA 复制起始和延伸所必需的复制螺旋酶。MCM2-7 环中的活性 ATP 酶位点是通过两个相邻亚基的相互作用表面形成的, 这样一个保守的精氨酸指基序的关键结构相对于相邻亚基盒的 Walker 的 ATP 结合位点反式提供。然而, 这六个 ATPase 活性位点可能对复杂的螺旋酶活性有不同的贡献。

**Product  
Picture**



Blocking buffer: 5% NFDM/TBST

Primary Ab dilution: 1:1000

Primary Ab incubation condition: 2 hours at room temperature

Secondary Ab: Goat Anti-Rabbit IgG H&L (HRP)

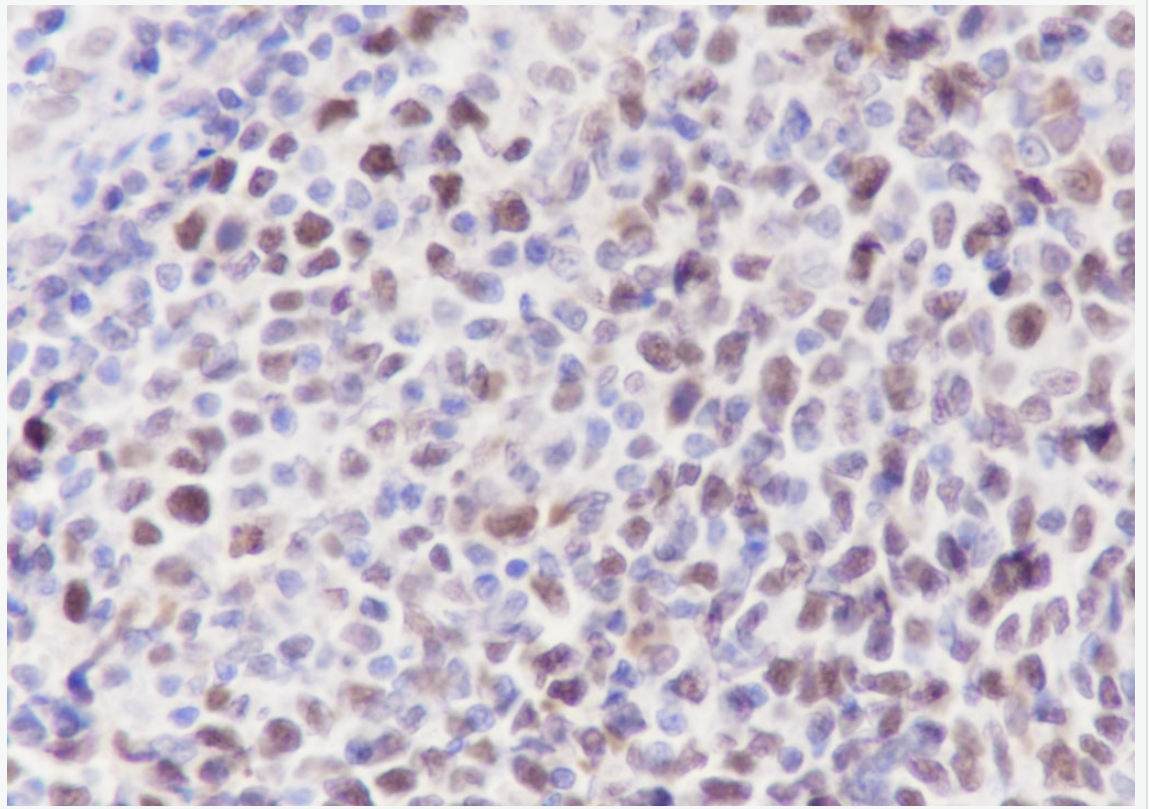
Lysate: 1: HeLa, 2: JK, 3: 4T1

Protein loading quantity: 20  $\mu$ g

Exposure time: 60 s

Predicted MW: 82 kDa

Observed MW: 82kDa



Tissue: Human tonsil

Section type: Formalin fixed & Paraffin -embedded section

Retrieval method: High temperature and high pressure

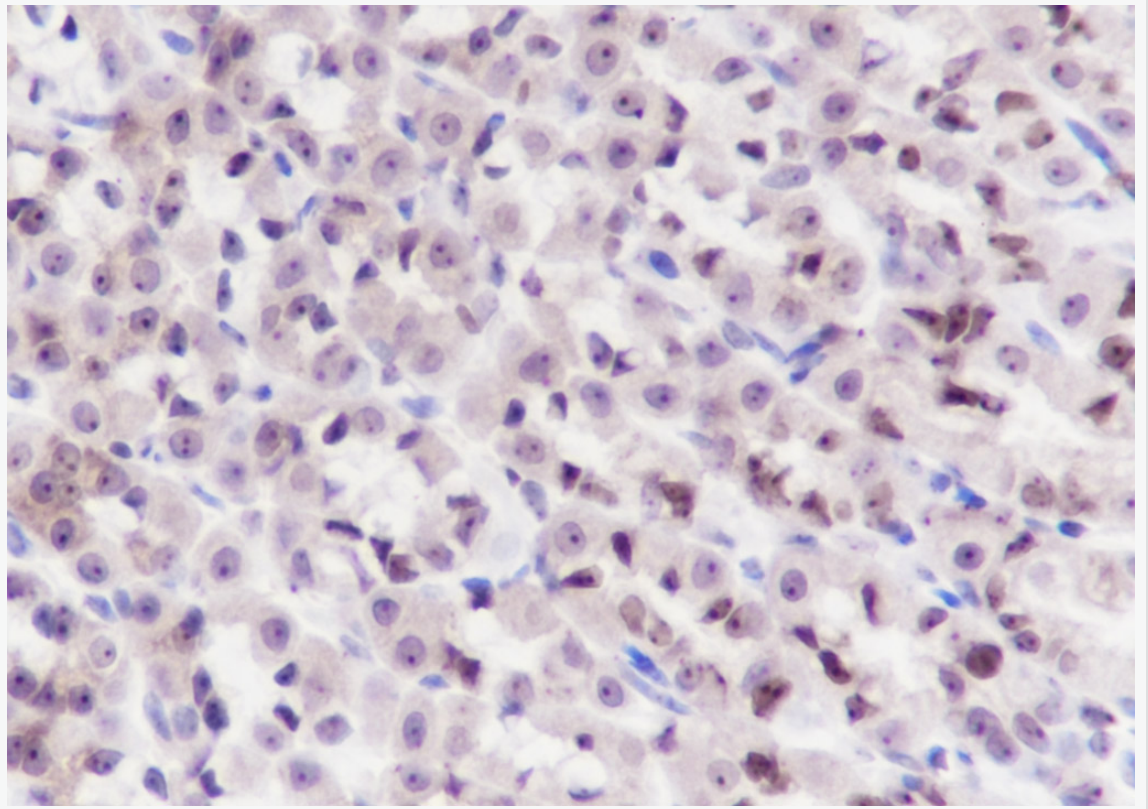
Retrieval buffer: Tris/EDTA buffer, pH 9.0 Primary Ab dilution: 1:100

Primary Ab incubation condition: 1 hour at room temperature

Secondary Ab: SP Kit(Rabbit) (sp-0023)

Counter stain: Hematoxylin (Blue)

Comment: Color brown is the positive signal for SLM-60506R



Tissue: Rat stomach

Section type: Formalin fixed & Paraffin -embedded section

Retrieval method: High temperature and high pressure

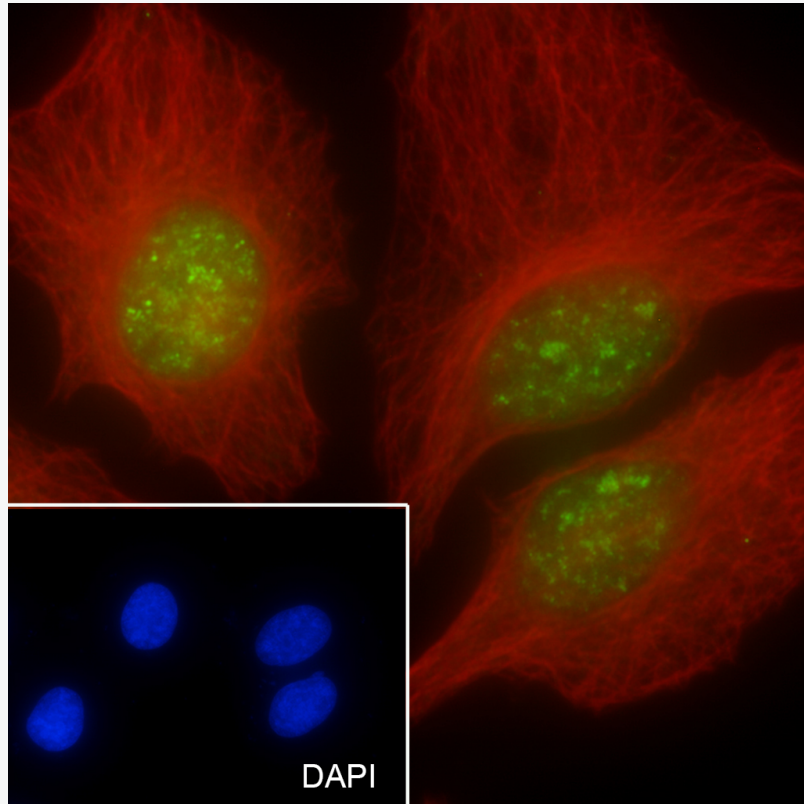
Retrieval buffer: Tris/EDTA buffer, pH 9.0 Primary Ab dilution: 1:100

Primary Ab incubation condition: 1 hour at room temperature

Secondary Ab: SP Kit(Rabbit) (sp-0023)

Counter stain: Hematoxylin (Blue)

Comment: Color brown is the positive signal for SLM-60506R



Cell line: HeLa

Fixative: 100% Ice-cold methanol

Permeabilization: 0.1% TritonX-100

Primary Ab dilution: 1:50

Primary incubation condition: 4°C overnight

Secondary Ab: Goat Anti-Rabbit IgG

Nuclear counter stain: DAPI (Blue)

Counter stain: Tubulin (Red)

Comment: Color green is the positive signal for SLM-60506R