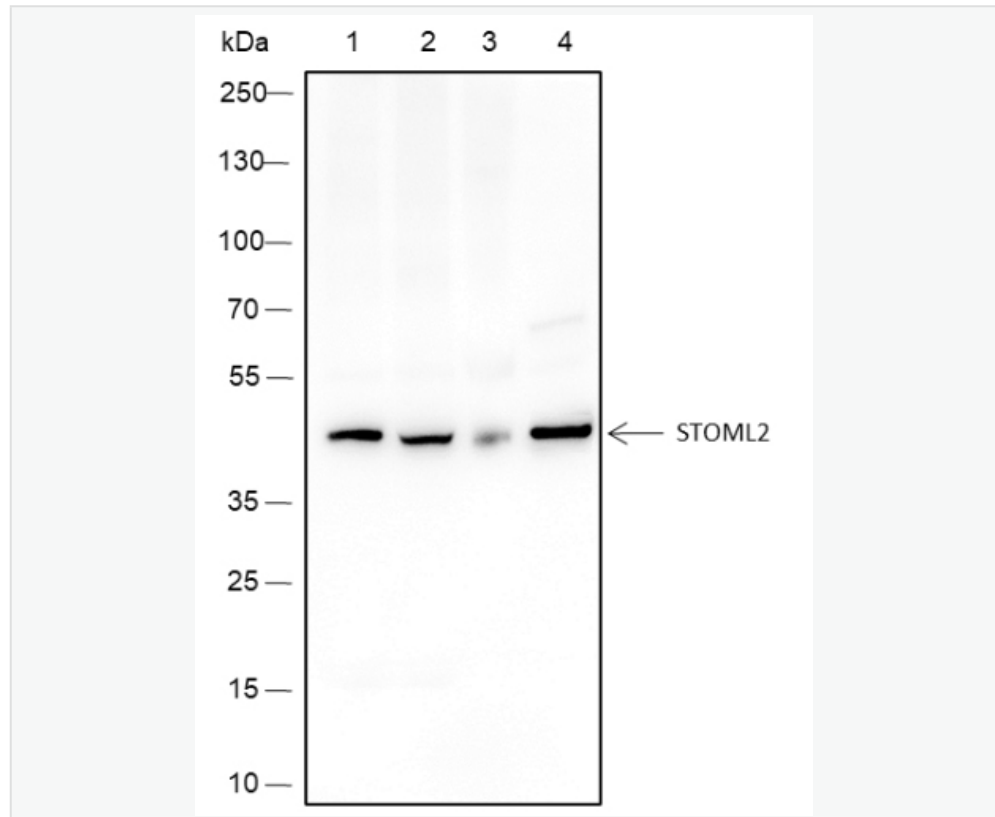


Mouse Anti-STOML2 antibody

SLM-60505M

Product Name	STOML2
Chinese Name	
Immunogen Species	Mouse
Clonality	Monoclonal
Clone NO.	D7F3
React Species	Human(predicted:Mouse,Rat)
Applications	WB=1:1000-10000,ICC/IF=1:100-500 not yet tested in other applications. optimal dilutions/concentrations should be determined by the end user.
Cellular localization	cytoplasmic The cell membrane
Form	Liquid
Concentration	1mg/ml
Lsotype	IgG2B/Kappa
Purification	Affinity purified by Protein G
Buffer Solution	1M TBS(pH7.4) with 1% BSA, 3% Proclin300 and 50% Glycerol.
Storage	Shipped at 4°C. Store at -20 °C for one year. Avoid repeated freeze/thaw cycles.
Attention	This product as supplied is intended for research use only, not for use in human, therapeutic or diagnostic applications.
PubMed	PubMed
Product Detail	Mitochondrion 蛋白, 可能调节 Mitochondrion 的生物发生和活性。刺激心磷脂生物合成, 结合心磷脂富集的膜, 在那里它招募和稳定一些蛋白质, 包括抑制素, 因此可能在 Mitochondrion 膜的功能微区组织中发挥作用。通过调节 Mitochondrion 的功能可能在包括细胞迁移、细胞增殖、T 细胞活化、钙稳态和细胞应激反应等几个生物学过程中发挥作用。可能通过负调节 Mitochondrion 的钙外流在钙稳态中发挥作用。Mitochondrion 过度融合需要一种促存活的细胞对应激的反应, 导致 Mitochondrion 增加 ATP 的产生。还可能通过与 T 细胞受体信号复合物的结合及其调节来调节质膜上功能域的组织并在 T 细胞活化中发挥作用。

Product Picture



Blocking buffer: 5% NFDN/TBST

Primary Ab dilution: 1:10000

Primary Ab incubation condition: 2 hours at room temperature

Secondary Ab: Goat Anti-Mouse IgG H&L (HRP)

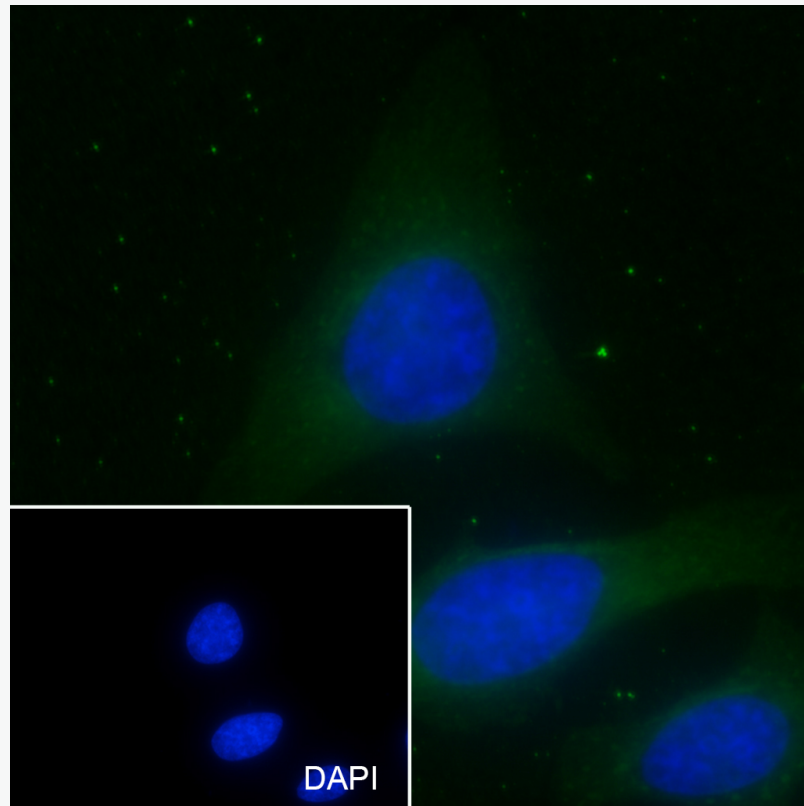
Lysate: 1: JK, 2: MCF-7, 3: Rat Brain, 4: N2a

Protein loading quantity: 20 μ g

Exposure time: 3 s

Predicted MW: 39 kDa

Observed MW: 39 kDa



Cell line: HeLa

Fixative: 100% Ice-cold methanol

Permeabilization: 0.1% TritonX-100

Primary Ab dilution: 1:50

Primary incubation condition: 4°C overnight

Secondary Ab: Goat Anti-Mouse IgG

Nuclear counter stain: DAPI (Blue)

Comment: Color green is the positive signal for SLM-60505M