



SUNLONG

SunLong Biotech Co.,LTD

Tel: 0086-571-56623320 Fax:0086-571-56623318

E-mail:sales@sunlongbiotech.com

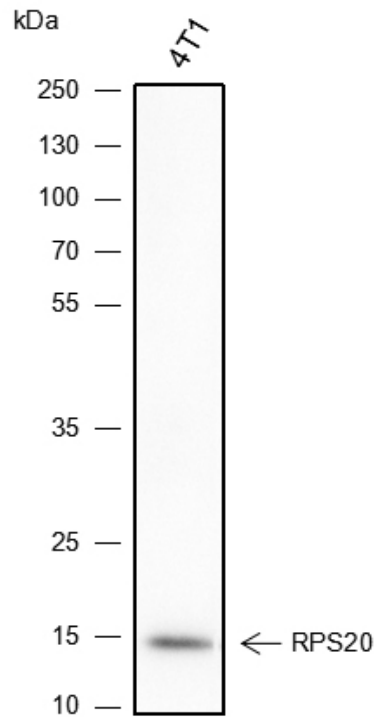
www.sunlongbiotech.com

Rabbit Anti-RPS20 antibody

SLM-60503R

Product Name	RPS20
Chinese Name	
Immunogen Species	Rabbit
Clonality	Monoclonal
Clone NO.	D5B6
React Species	Human,Mouse,Rat
Applications	WB=1:500-2000,IHC-P=1:50-200,IHC-F=1:50-200,IF=1:50-200 (Paraffin sections need antigen repair) not yet tested in other applications. optimal dilutions/concentrations should be determined by the end user.
Cellular localization	The cell membrane
Form	Liquid
Concentration	1mg/ml
Lsotype	IgG/Kappa
Purification	Affinity purified by Protein A
Buffer Solution	1M TBS(pH7.4) with 1% BSA, 3% Proclin300 and 50% Glycerol.
Storage	Shipped at 4°C. Store at -20 °C for one year. Avoid repeated freeze/thaw cycles.
Attention	This product as supplied is intended for research use only, not for use in human, therapeutic or diagnostic applications.
PubMed	PubMed
Product Detail	该基因编码的蛋白质属于肽酶家族 S14，在 ATP 和镁存在下将蛋白质水解成小肽。这种蛋白质被运输到 Mitochondrion 基质中，并与 Mitochondrion 内膜相联系。

**Product
Picture**



Blocking buffer: 5% NFDN/TBST

Primary ab dilution: 1:1000

Primary ab incubation condition: 2 hours at room temperature

Secondary ab: Goat Anti-Rabbit IgG H&L (HRP)

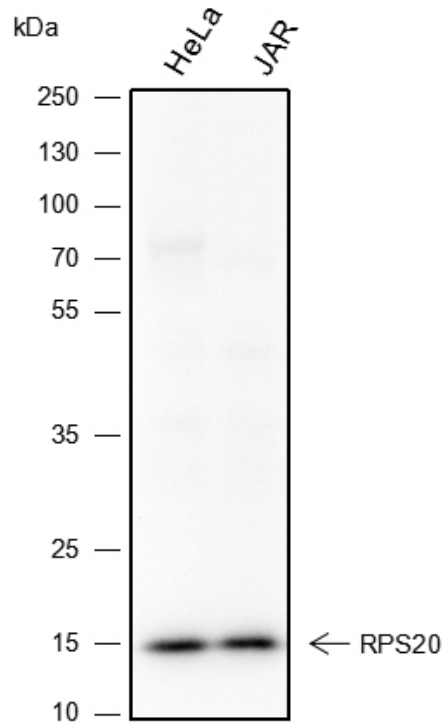
Lysate: 4T1

Protein loading quantity: 20 μ g

Exposure time: 3 s

Predicted MW: 15 kDa

Observed MW: 15 kDa



Blocking buffer: 5% NFDM/TBST

Primary ab dilution: 1:1000

Primary ab incubation condition: 2 hours at room temperature

Secondary ab: Goat Anti-Rabbit IgG H&L (HRP)

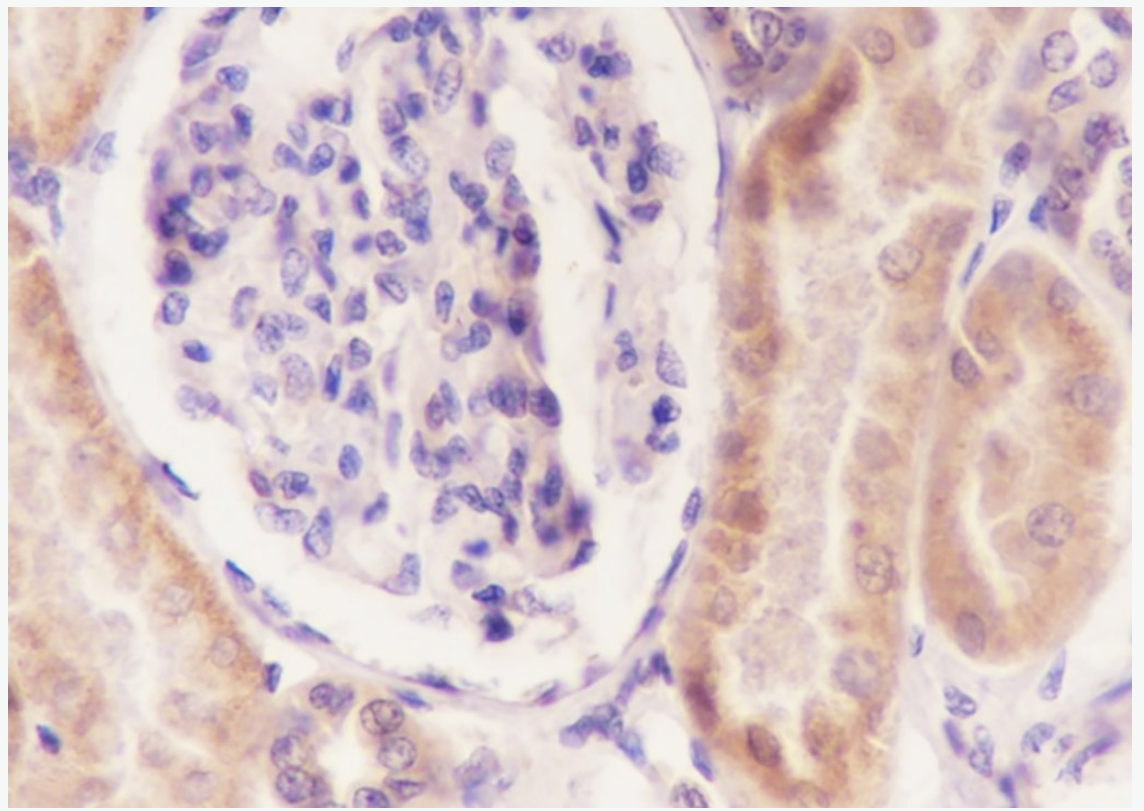
Lysate: HeLa, JAR

Protein loading quantity: 20 μ g

Exposure time: 3 s

Predicted MW: 15 kDa

Observed MW: 15 kDa



Tissue: Human kidney

Section type: Formalin fixed & Paraffin -embedded section

Retrieval method: High temperature and high pressure

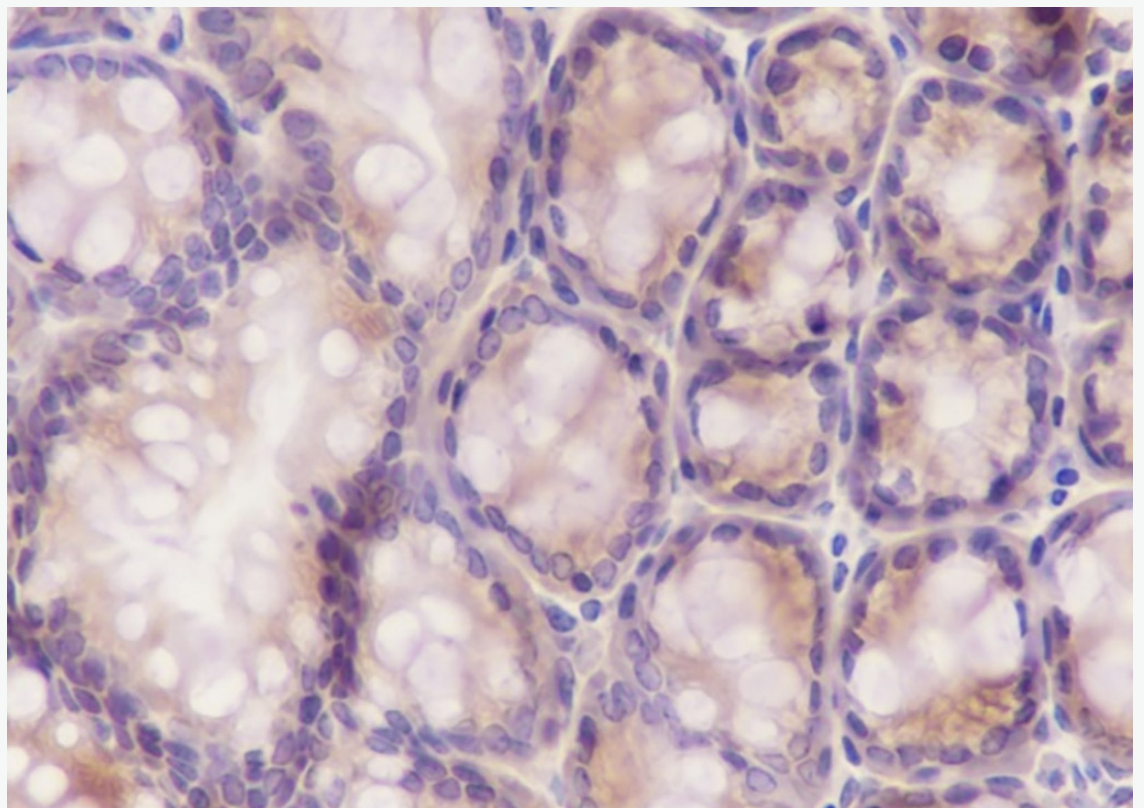
Retrieval buffer: Tris/EDTA buffer, pH 9.0 Primary ab dilution: 1:100

Primary ab incubation condition: 1 hour at room temperature

Secondary ab: SP Kit(Rabbit) (sp-0023)

Counter stain: Hematoxylin (Blue)

Comment: Color brown is the positive signal for SLM-60503R



Tissue: Mouse colon

Section type: Formalin fixed & Paraffin -embedded section

Retrieval method: High temperature and high pressure

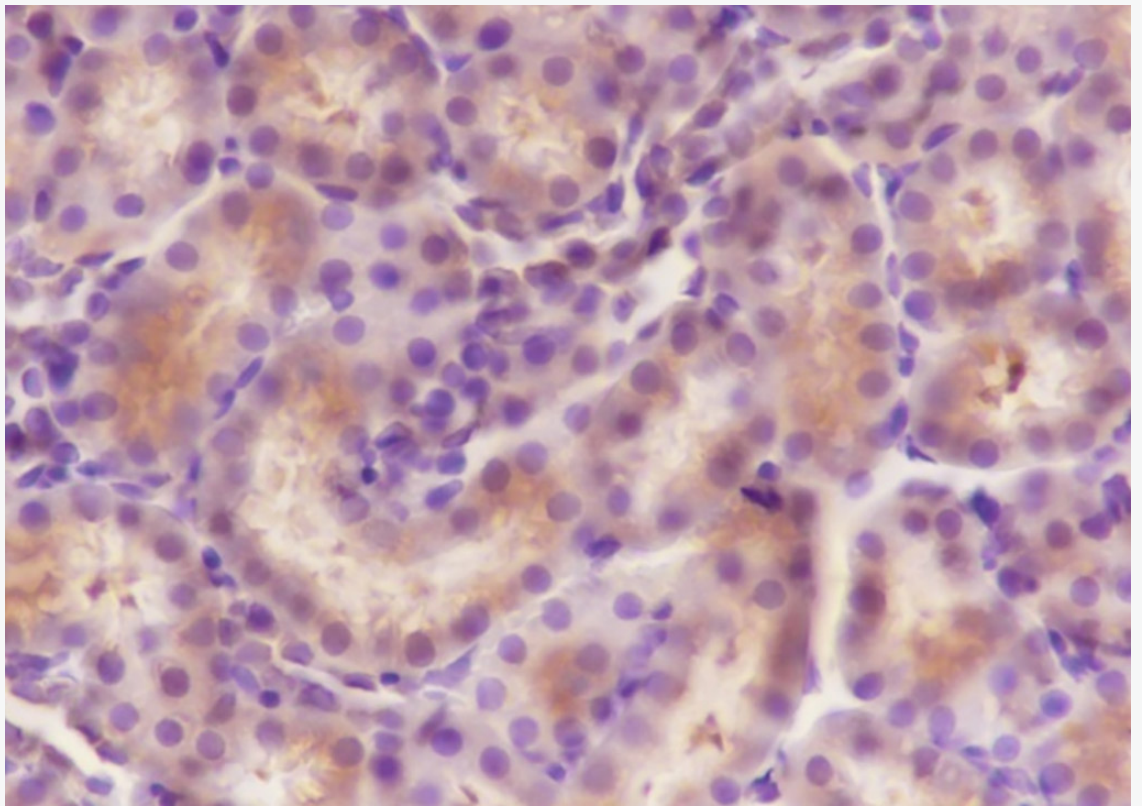
Retrieval buffer: Tris/EDTA buffer, pH 9.0 Primary ab dilution: 1:100

Primary ab incubation condition: 1 hour at room temperature

Secondary ab: SP Kit(Rabbit) (sp-0023)

Counter stain: Hematoxylin (Blue)

Comment: Color brown is the positive signal for SLM-60503R



Tissue: Rat kidney

Section type: Formalin fixed & Paraffin -embedded section

Retrieval method: High temperature and high pressure

Retrieval buffer: Tris/EDTA buffer, pH 9.0 Primary ab dilution: 1:100

Primary ab incubation condition: 1 hour at room temperature

Secondary ab: SP Kit(Rabbit) (sp-0023)

Counter stain: Hematoxylin (Blue)

Comment: Color brown is the positive signal for SLM-60503R