

Mouse Anti-PLCB3 antibody

SLM-60497M

Product Name PLCB3

Immunogen Species Mouse

Clonality Monoclonal

Clone NO. D2A5

React Species Human

WB=1:500-2000 (Paraffin sections need antigen repair)

Applications not yet tested in other applications.
optimal dilutions/concentrations should be determined by the end user.

Cellular localization The nucleus cytoplasmic The cell membrane

Form Liquid

Concentration 1mg/ml

Lsotype IgG1/Kappa

Purification Affinity purified by Protein G

Buffer Solution 1M TBS(pH7.4) with 1% BSA, 3% Proclin300 and 50% Glycerol.

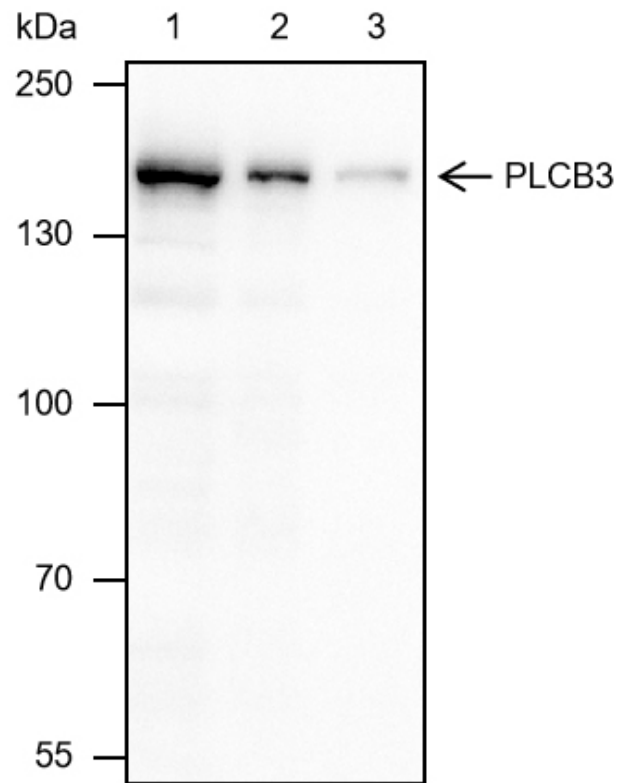
Storage Shipped at 4°C. Store at -20 °C for one year. Avoid repeated freeze/thaw cycles.

Attention This product as supplied is intended for research use only, not for use in human, therapeutic or diagnostic applications.

PubMed [PubMed](#)

Product Detail 第二信使分子二酰甘油 (DAG) 和肌醇 1,4,5-三磷酸 (IP3) 的产生是由活化的磷脂酰肌醇特异性磷脂酶 C 酶介导的。

**Product
Picture**



Blocking buffer: 5% NFDM/TBST

Primary ab dilution: 1:1000

Primary ab incubation condition: 2 hours at room temperature

Secondary ab: Goat Anti-Mouse IgG H&L (HRP)

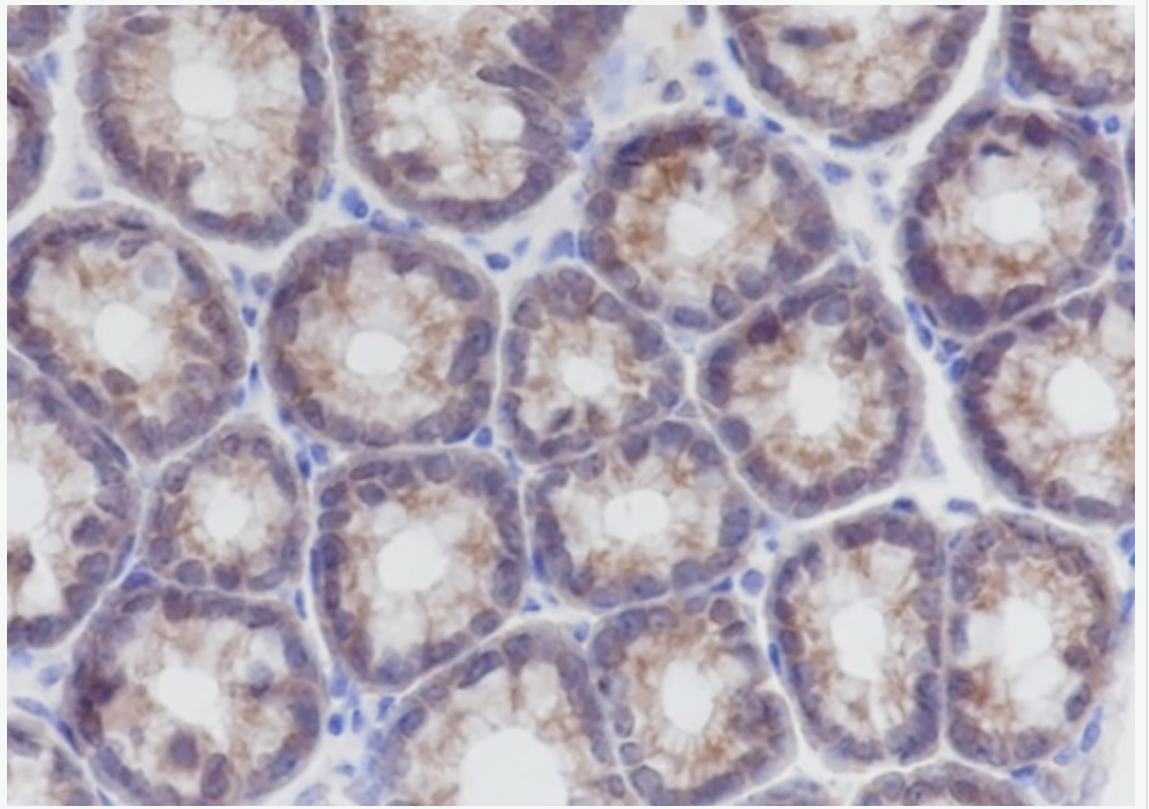
Lysate: 1: HeLa, 2: 293T, 3: F9

Protein loading quantity: 20 μ g

Exposure time: 3 s

Predicted MW: 150 kDa

Observed MW: 150 kDa



Tissue: Mouse colon

Section type: Formalin fixed & Paraffin -embedded section

Retrieval method: High temperature and high pressure

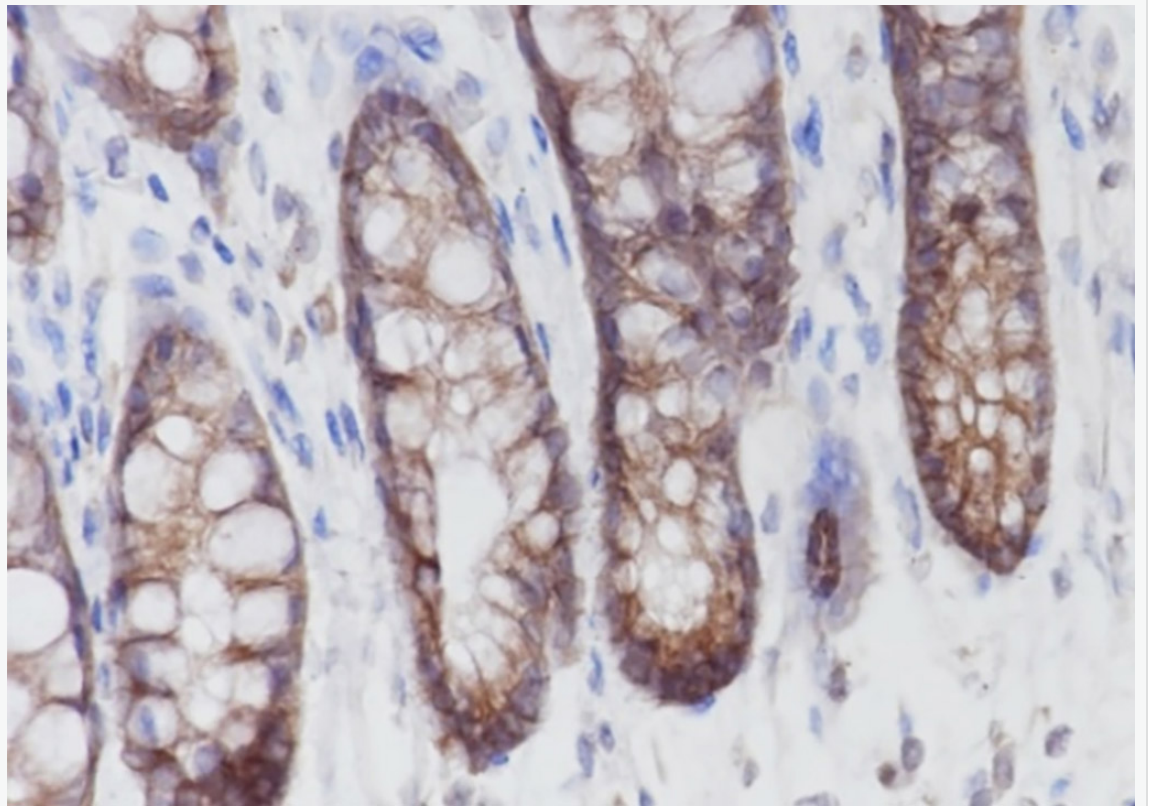
Retrieval buffer: Tris/EDTA buffer, pH 9.0 Primary ab dilution: 1:100

Primary ab incubation condition: 1 hour at room temperature

Secondary ab: SP Kit(Mouse)(sp-0024)

Counter stain: Hematoxylin (Blue)

Comment: Color brown is the positive signal SLM-60497M



Tissue: Rat colon

Section type: Formalin fixed & Paraffin -embedded section

Retrieval method: High temperature and high pressure

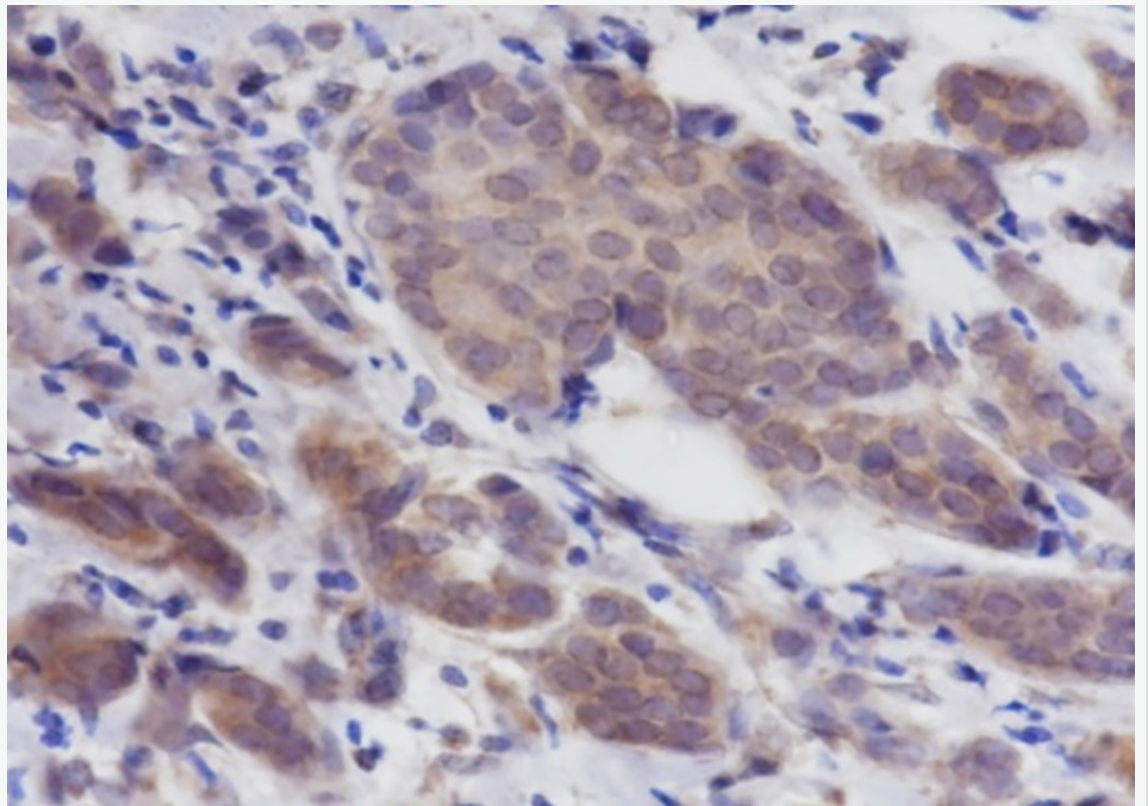
Retrieval buffer: Tris/EDTA buffer, pH 9.0 Primary ab dilution: 1:100

Primary ab incubation condition: 1 hour at room temperature

Secondary ab: SP Kit(Mouse)(sp-0024)

Counter stain: Hematoxylin (Blue)

Comment: Color brown is the positive signal for SLM-60497M



Tissue: Human breast cancer

Section type: Formalin fixed & Paraffin -embedded section

Retrieval method: High temperature and high pressure

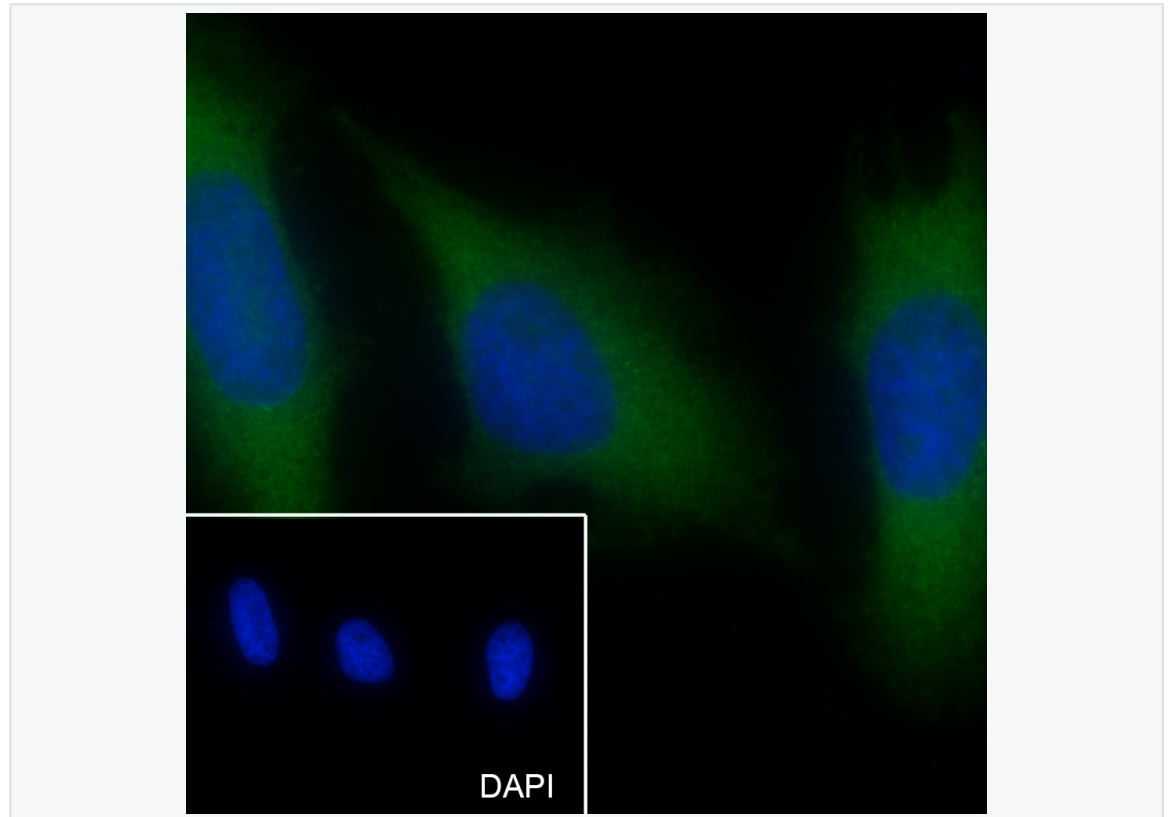
Retrieval buffer: Tris/EDTA buffer, pH 9.0 Primary ab dilution: 1:100

Primary ab incubation condition: 1 hour at room temperature

Secondary ab: SP Kit(Mouse)(sp-0024)

Counter stain: Hematoxylin (Blue)

Comment: Color brown is the positive signal SLM-60497M



Cell line: HeLa

Fixative: 4% Paraformaldehyde

Permeabilization: 0.1% TritonX-100

Primary ab dilution: 1:50

Primary incubation condition: 4°C overnight

Secondary ab: Goat Anti-Mouse IgG

Nuclear counter stain: DAPI (Blue)

Comment: Color green is the positive signal for SLM-60497M